

Unique Manufacturing/ Studio Building

618 W Magnolia Ave, Louisville, KY 40208



Listing ID: 30861689
 Status: Active
 Property Type: Retail-Commercial For Lease
 Retail-Commercial Type: Retail-Pad
 Contiguous Space: 690 SF
 Total Available: 690 SF
 Lease Rate: \$26 PSF (Annual)
 Base Monthly Rent: \$1,495
 Lease Type: Undisclosed



Overview/Comments

Please contact the agent for more information about this property.

More Information Online

<https://www.kcrea.com//listing/30861689>



QR Code

Scan this image with your mobile device:

General Information

Tax ID/APN: 031J01620000
 Retail-Commercial Type: Retail-Pad, Other
 Zoning: M-2 - Industrial District

Available Space

Suite/Unit Number:	1	Date Available:	11/22/2023
Space Available:	690 SF	Lease Rate:	\$26 PSF (Annual)
Minimum Divisible:	690 SF	Lease Type:	Undisclosed
Maximum Contiguous:	690 SF	Kitchen/Breakroom:	Yes
Space Type:	New	Parking Spaces:	0

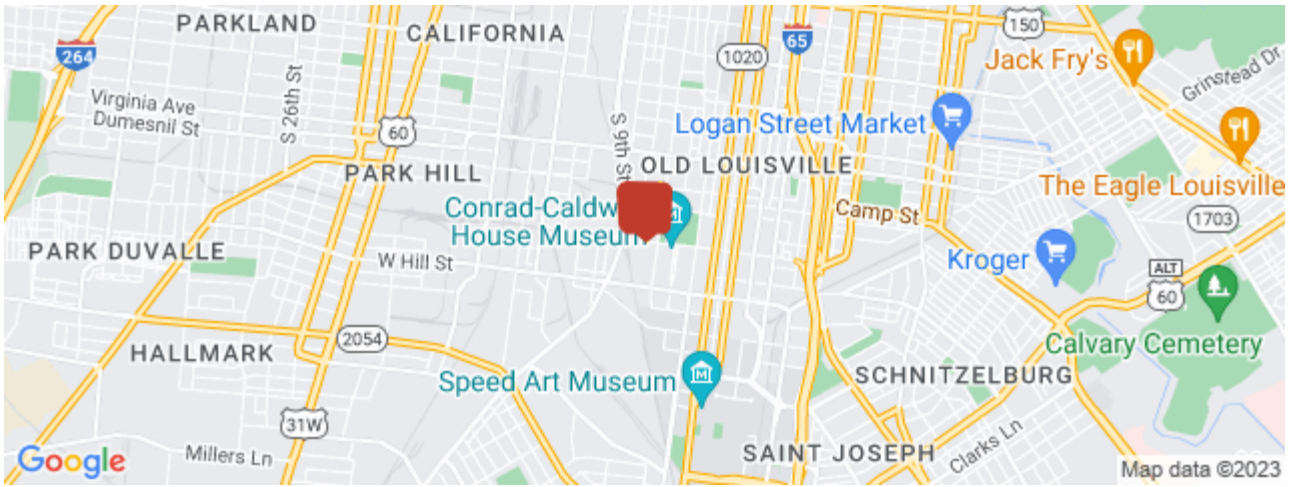
Space Description Unique 1980's light manufacturing / studio building, with renovated office area available. Shared kitchen and bath. Private areas lock, and code programable private access. Very quiet area. Owner occupied rear studio / warehouse with separate entrance. Will consider some modifications, and price negotiable accordingly. Large lot can be available depending on needs. After one year, whole building may be available, renter will be offered rite of first refusal. Best to come have a look. A very flexible opportunity.

Building Related

Passenger Elevators: 0
 Freight Elevators: 0

Location

Address: 618 W Magnolia Ave, Louisville, KY 40208
 County: Jefferson
 MSA: Louisville/Jefferson County



Property Images



2



4



3



5



6



9



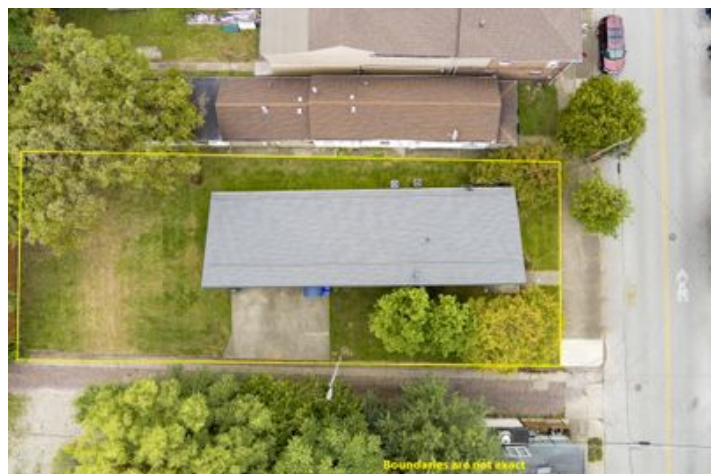
7



10



8



11



12



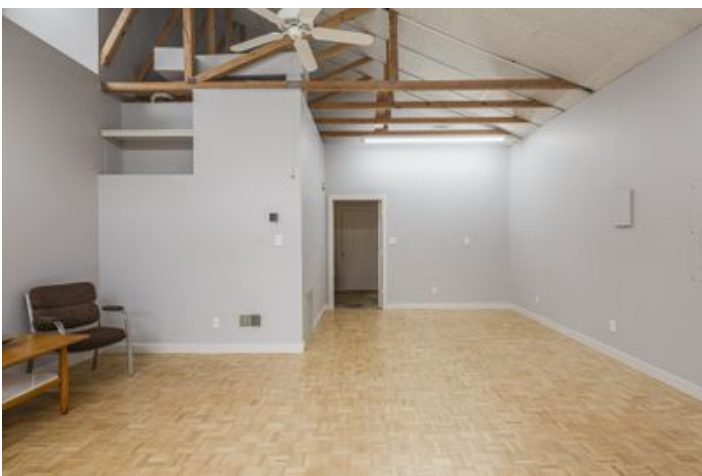
15



13



15A



14



16



17



18



18A



19



19A



21



22



20



14



15



15A



16



17



18



18A



19



19A



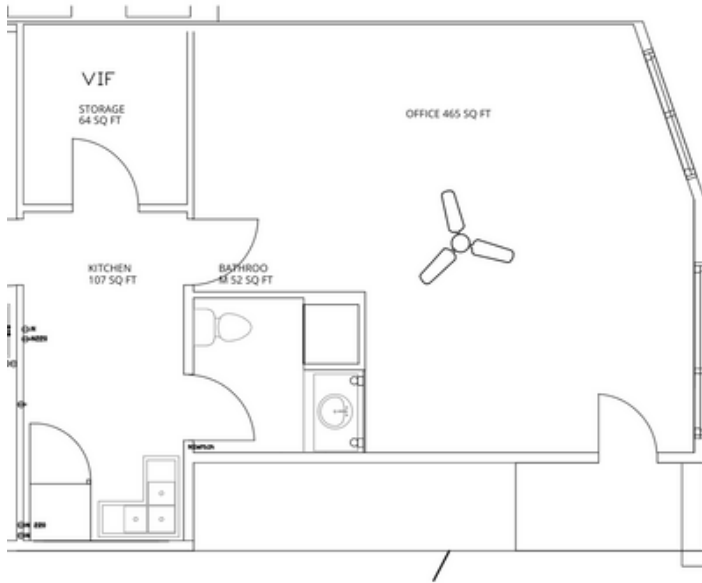
20



21



22



Floor Plan

Property Contacts



Ben J Bass

EXP Realty LLC
502-821-7689 [M]
502-821-7689 [O]
ben@lockandkeyells.com