



**4,642 RSF AND 9,727 RSF SPACES - TOTALING 14,369 RSF FOR SUBLEASE**

**HIGHLY DESIRABLE OFFICE IN ONE OF ATLANTA'S MOST  
ICONIC MIXED-USE DEVELOPMENTS**

White Provision Office Building | 1170 Howell Mill Road, Atlanta, GA 30318



## SUBLEASE INFORMATION

**14,369 RSF**



Total Space:

9,727 RSF - 1st floor

4,642 RSF - 2nd floor



Sublease Term: 12/31/2028



Asking Rate: Negotiable



Walkable to numerous F&B and retail options



Parking Ratio: 3.0/1,000 SF



Private Outdoor Patio



Covered Parking



24/7 Building Security





NATURAL LIGHT THROUGHOUT



MODERN RECEPTION



VARIETY OF MEETING ROOM SIZES



PRIVATE TENANT OUTDOOR PATIO



MULTIPLE PRIVATE ROOMS THROUGHOUT



UPSCALE DECOR



PRIVATE WELLNESS ROOM



COLLABORATIVE SEATING THROUGHOUT



OPEN FLOORPLAN

# TROPHY OFFICE SUBLEASE SPACE

WALKABLE WEST MIDTOWN

CENTRAL TO WEST MIDTOWN'S CORE  
F&B AND RETAIL DESTINATION



FLOWER CHILD



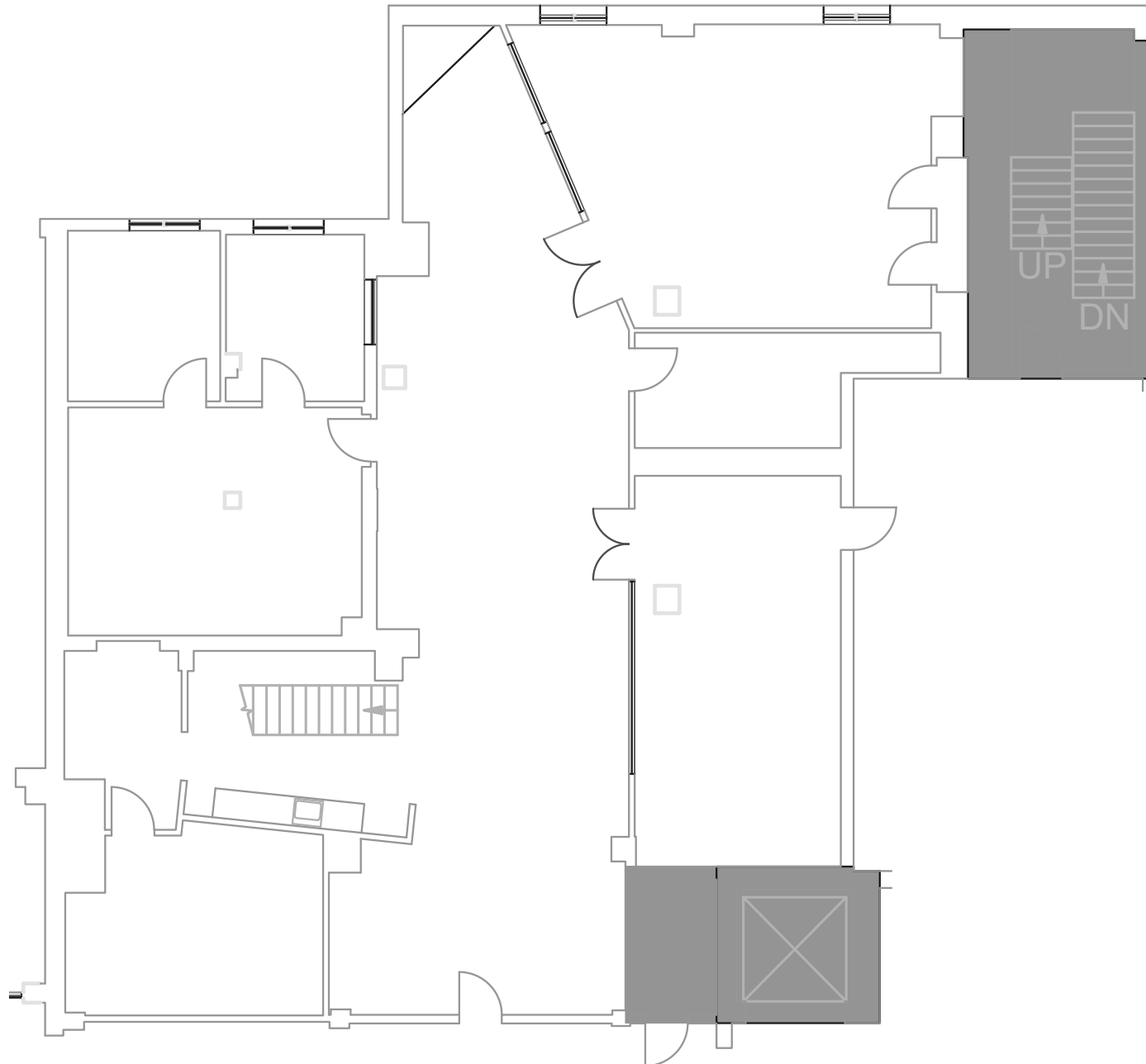
LITTLE SPARROW



WESTSIDE PROVISION RETAIL



2ND FLOOR | 4,642 RSF





**Office Sublease**  
at White Provision

**TROPHY OFFICE  
SPACE IN THE HEART OF  
WEST MIDTOWN**

John Thornton | Founder & CEO  
404.400.7451 | [john.thornton@capitalre.com](mailto:john.thornton@capitalre.com)

Trey Dove | Senior Vice President  
706.495.4285 | [trey.dove@capitalre.com](mailto:trey.dove@capitalre.com)

