

SKETCH/AREA TABLE ADDENDUM

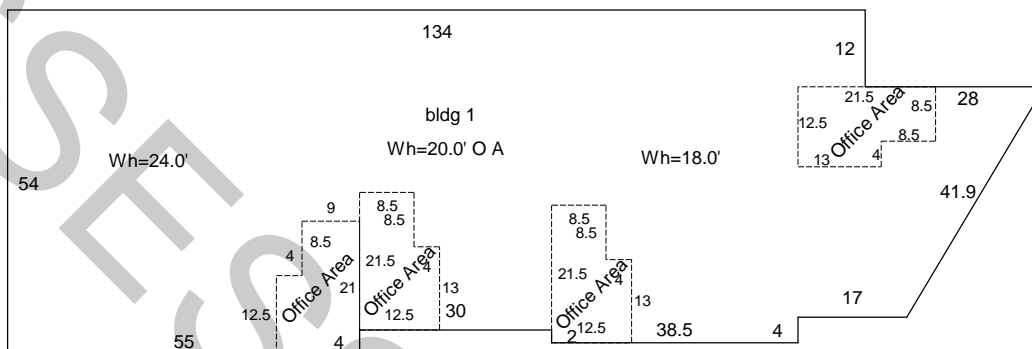
S:\Conversion\Templ60100401.AX5

APN 139-11-601-004

SUBJECT

Address 3765 Losee		
Date 06/2004	N/A	LC#
Subj/Project		
Model		
Drawn by # 087		

IMPROVEMENTS SKETCH



Comments: This is for Tax Assessment Purposes only For specific information please go to our website at www.co.clark.nv.us/assessor/assessor.htm

AREA CALCULATIONS

Scale: 1" = 12'

AREA CALCULATIONS SUMMARY					
Code	Description	Factor	Net Size	Perimeter	Net Totals
GBA1	bldg 1	1.00	7597.00	420.4	7597.00
OFFC	Office Area	1.00	239.00	68.0	
	Office Area	1.00	234.75	68.0	
	Office Area	1.00	234.75	68.0	
	Office Area	1.00	234.75	68.0	943.25
Net BUILDING Area (rounded w/ factors)					7597

COMMENTS	
FIXTURES	

SKETCH/AREA TABLE ADDENDUM

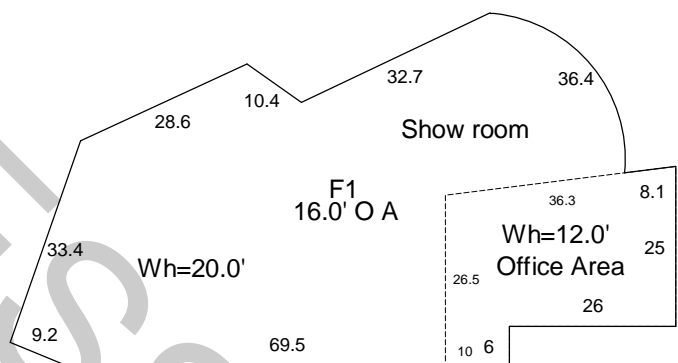
S:\Conversion\Templ60100402.AX5

APN 139-11-601-004

SUBJECT

Address 3745 Losee		
Date 06/2004	N/A	LC#
Subj/Project		
Model		
Drawn by # 087		

IMPROVEMENTS SKETCH



Comments: This is for Tax Assessment Purposes only For specific information please go to our website at www.co.clark.nv.us/assessor/assessor.htm

AREA CALCULATIONS

Scale: 1" = 12'

AREA CALCULATIONS SUMMARY						COMMENTS
Code	Description	Factor	Net Size	Perimeter	Net Totals	
GBA1	F1	1.00	4188.80	285.2	4188.80	
OFFC	Office Area	1.00	879.00	129.8	879.00	
Net BUILDING Area (rounded w/ factors)					4189	

FIXTURES	