

20015 Diamond Lake S

Rogers, MN 55374

183,600 SF Available, 1 acre of paved and fenced outside storage



Contact Us

**James
DePietro**

+1 952 924 4616

james.depietro@cbre.com

**Dan
Swartz**

+1 952 924 4652

dan.swartz@cbre.com

**Austin
Lovin**

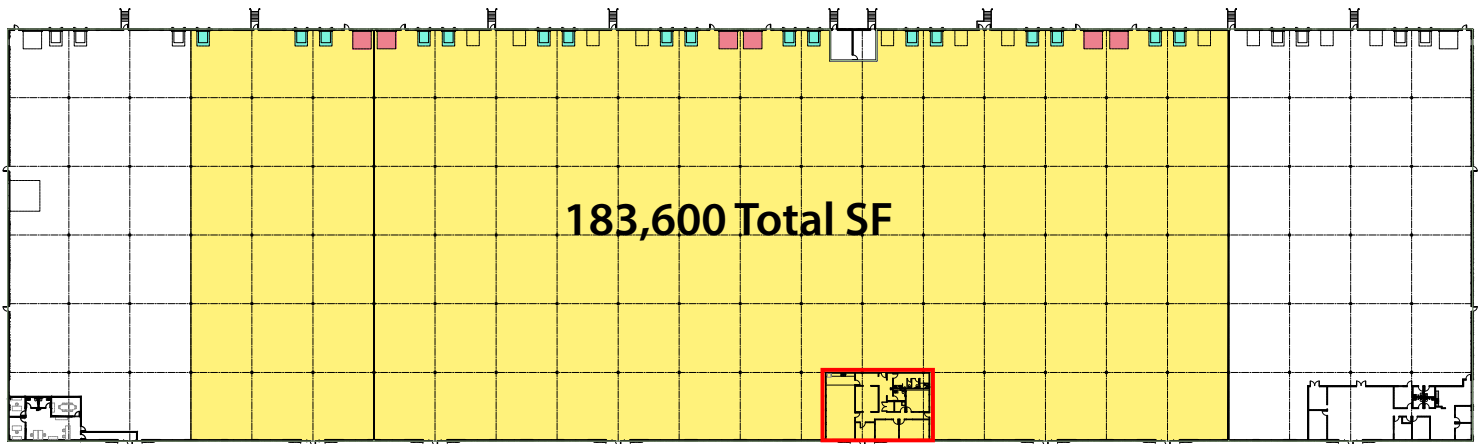
+1 612 336 4255

austin.lovin@cbre.com

20015 Diamond Lake S

Rogers, MN 55374

Drive-ins  Docks 



Office

Lease Rates

- Negotiable

Est. 2026 CAM/Tax

- \$4.29 PSF

Loading

- 17 Docks
- 6 Drive-ins

Total Building SF

- 259,200 SF

Available SF

- 50,000 SF - 183,600 SF
- 3,040 SF Office

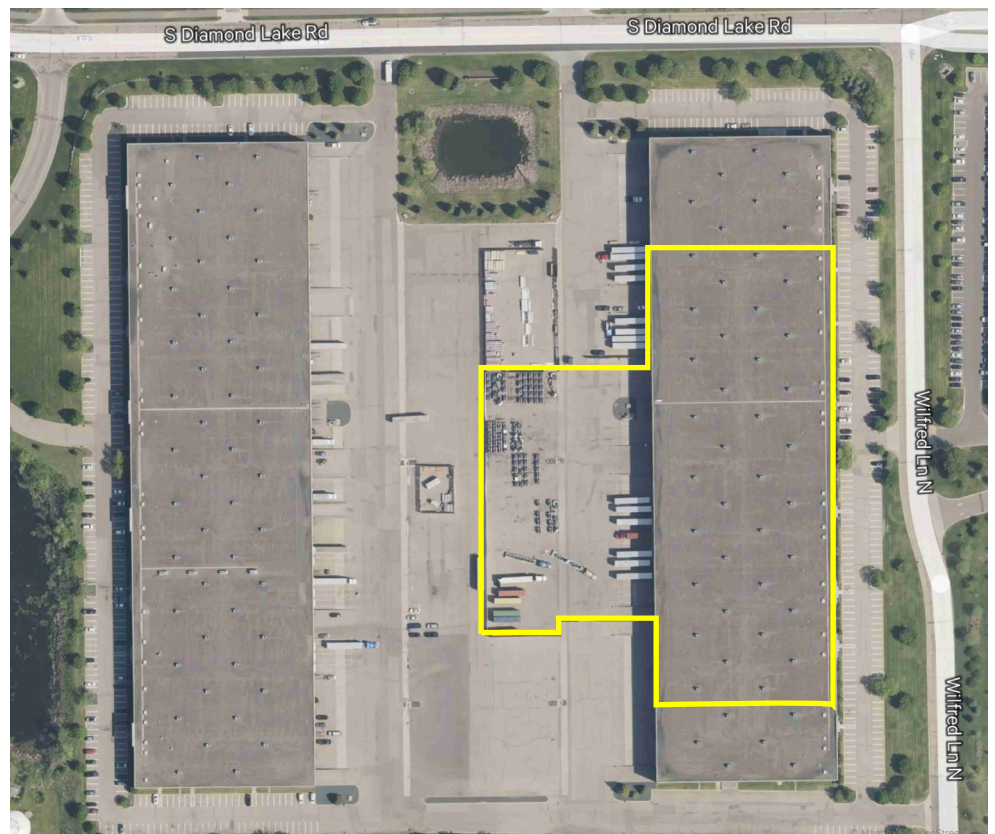
Year Built

- 2005

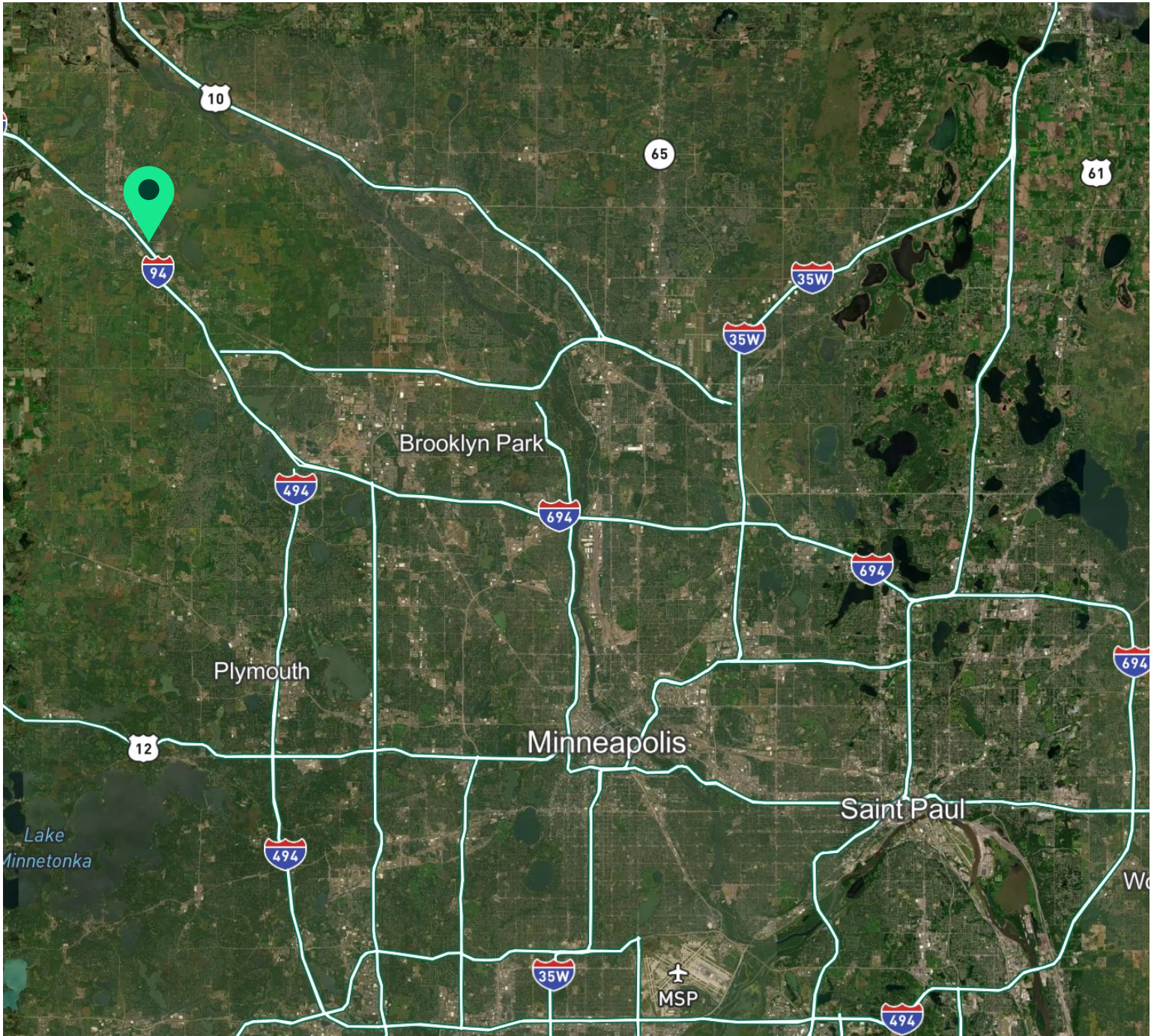
Clear Height

- 32'

1 Acre of Fenced and Paved Outside Storage







Contact Us

**James
DePietro**

+1 952 924 4616

james.depietro@cbre.com

**Dan
Swartz**

+1 952 924 4652

dan.swartz@cbre.com

**Austin
Lovin**

+1 612 336 4255

austin.lovin@cbre.com