

Dental Space

915 N Milwaukee Ave - Suite D
Libertyville, IL

FOR SALE & LEASE

Turnkey orthodontic office opportunity at 915 Milwaukee Avenue in Libertyville, featuring an existing, well-designed buildout with six (6) operatories. The property offers excellent visibility along Milwaukee Avenue, strong daily traffic exposure, and ample on-site parking for both staff and patients. Ideal for orthodontic, dental, or related medical users seeking a second-generation space in a strong Lake County submarket, the location provides convenient access to affluent surrounding communities and a well-established patient base.



Sale Price:
\$750,000

Lease Rate:
\$30.00 SF/yr (NNN)

Parking Spaces:
40

Available SF:
1,650 SF

Lease Term:
Negotiable

915 N Milwaukee Ave - Suite D

DEMOGRAPHICS MAP AND REPORT

Libertyville, IL

Population

1 MILE

7,741

TOTAL POPULATION

42,040 | 131,329
3 MILES | 5 MILES

42

AVERAGE AGE

42 | 41
3 MILES | 5 MILES

Households and Income

1 MILE

3,008

TOTAL HOUSEHOLDS

15,562 | 49,319
3 MILES | 5 MILES

2.6

OF PERSONS PER HH

2.7 | 2.7
3 MILES | 5 MILES

Race

1 MILE

6,457

TOTAL POPULATION - WHITE

30,544 | 81,135
3 MILES | 5 MILES

1 Mile

42

AVERAGE AGE (MALE)

41 | 40
3 MILES | 5 MILES

43

AVERAGE AGE (FEMALE)

43 | 42
3 MILES | 5 MILES

1 Mile

\$207,593

AVERAGE HH INCOME

\$203,041 | \$163,336
3 MILES | 5 MILES

\$696,545

AVERAGE HOUSE VALUE

\$561,564 | \$442,764
3 MILES | 5 MILES

1 Mile

395

TOTAL POPULATION - ASIAN

4,643 | 18,149
3 MILES | 5 MILES



915 N Milwaukee Ave - Suite D

Libertyville, IL

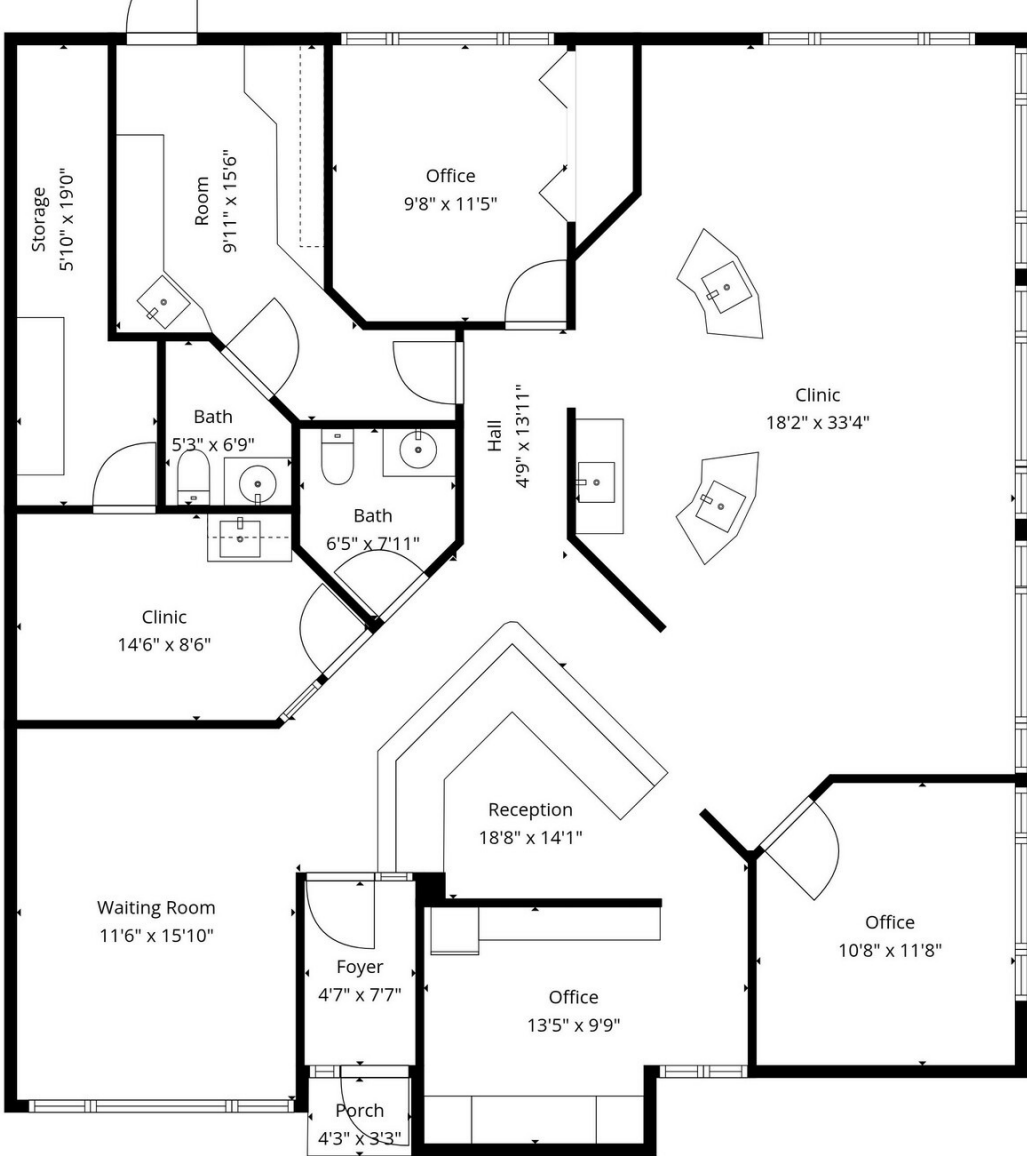
ADDITIONAL PHOTOS



915 N Milwaukee Ave - Suite D

Libertyville, IL

FLOOR PLANS



915 N Milwaukee Ave - Suite D

RETAILER MAP

Libertyville, IL

