



*At the Center of Convenience and Comfort*

# CENTREPORT OFFICE PARK

Greensboro, NC 27409

**DEEP RIVER**  
PARTNERS

 **CUSHMAN &  
WAKEFIELD**



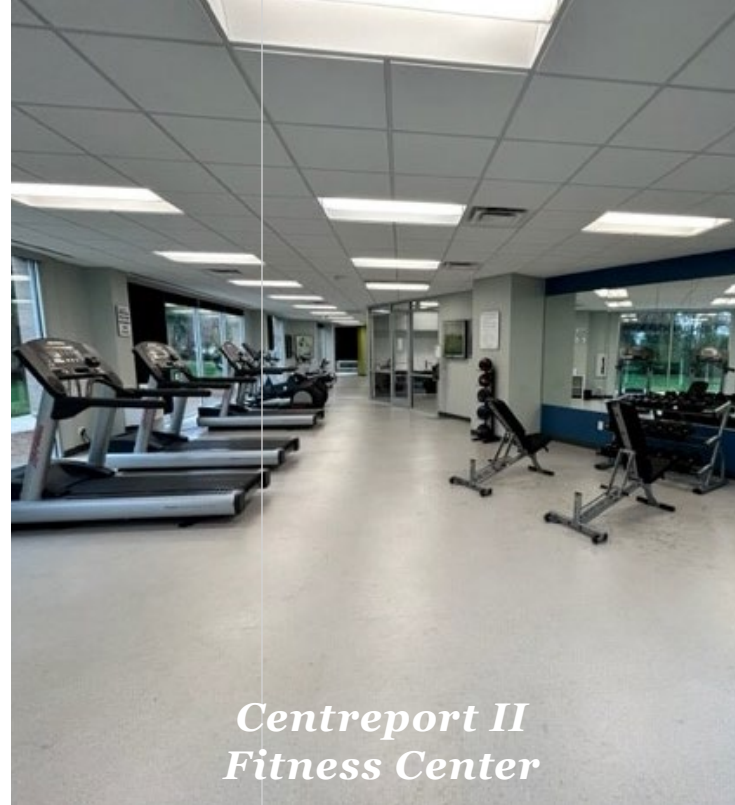
## CentrePort is at the center of convenience and comfort.

Experience the ultimate in convenience and accessibility at CentrePort Office Park, located in the heart of Greensboro, surrounded by a thriving community of businesses, restaurants, and retail shops. As a premier destination for companies seeking to attract top talent from across the Triad, CentrePort is nestled in a region of 1.8 million people that includes the cities of Greensboro, High Point, and Winston-Salem.

At CentrePort, our location is unmatched in the area, with immediate access to major highways including I-40, US-421, I-73, Highway 68, and Wendover Avenue. And with the Piedmont Triad International Airport just minutes away, your business will have the ultimate in connectivity and accessibility.

With over 350,000 square feet of space, CentrePort Office Park offers a wide variety of flexible floor plans to meet the needs of businesses of all sizes. Our state-of-the-art facilities feature modern amenities including a fitness center, shared conference spaces, ample parking, and high-speed internet, making it the perfect place to conduct business.

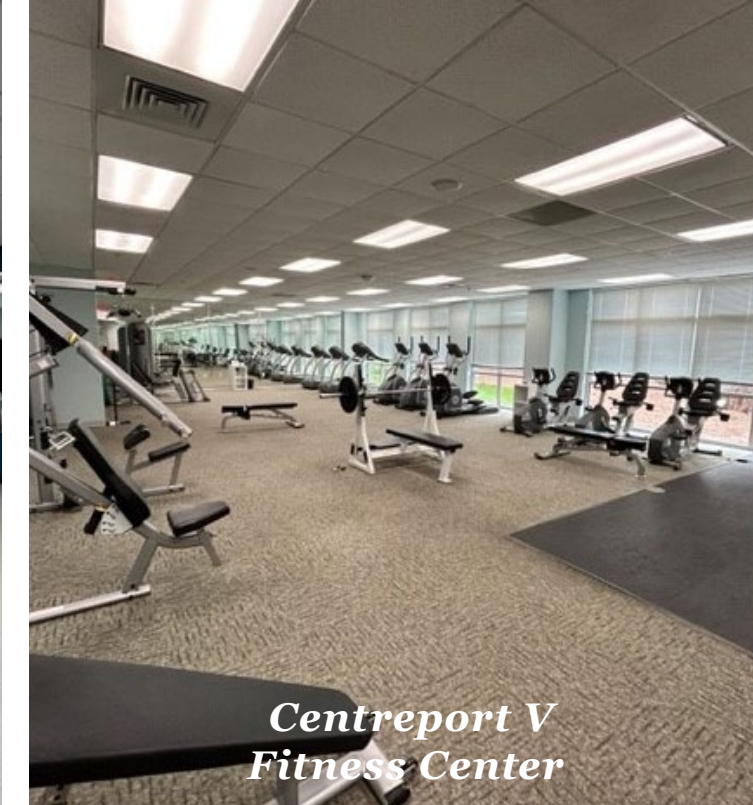
At CentrePort, we understand that a comfortable and welcoming work environment is essential for productivity and success. That's why we've created a space that's not only functional, but also inspiring, with beautiful landscaping and ample green space for employees to enjoy.



*Centreport II  
Fitness Center*



*Centreport V  
Auditorium*



*Centreport V  
Fitness Center*



*Centreport II  
Break Area / Fitness Center*



## Property Highlights

- Five Class A office buildings, providing flexibility for companies of all sizes
- Corporate office park setting with on-site amenities including fitness center, conference facilities and shared auditoriums
- Immediate access to I-40, US-421, I-73, Highway 68 and Wendover Avenue
- Close proximity to restaurants, shopping, banks and lodging
- Conveniently located just minutes away from Piedmont Triad International Airport



# CentrePort Office Park



**CENTREPORT I - 200 CentrePort Dr**

Total Size: 46,383 SF  
 Year Built: 1986  
 Floors: 3  
 Parking: 4.3 per 1,000 SF



**CENTREPORT II - 202 CentrePort Dr**

Total Size: 61,926 SF  
 Year Built: 1990  
 Floors: 4  
 Parking: 5.4 per 1,000 SF



**CENTREPORT III - 101 CentrePort Dr**

Total Size: 82,452 SF  
 Year Built: 1998  
 Floors: 4  
 Parking: 4.0 per 1,000 SF



**CENTREPORT IV - 7736 McCloud Rd**

Total Size: 74,086 SF  
 Year Built: 1985  
 Floors: 3  
 Parking: 4.0 per 1,000 SF



**CENTREPORT V - 7900 Triad Center Dr**

Total Size: 87,260 SF  
 Year Built: 2000  
 Floors: 4  
 Parking: 4.0 per 1,000 SF



WITHIN A 10-MINUTE DRIVE TIME:



195

Dining / Bar / Pub



44

Hotels / Lodging



594

Retail / Trade

WITHIN A 1-MILE RADIUS:



1,324

Total Daytime Population



421

Establishments

# Prime Location

Easy Access to Area Amenities



## RESTAURANTS

- a. Ruby Tuesday
- b. Dunkin' Donuts
- c. Duck Donuts
- d. McDonald's
- e. Wendy's
- f. Bojangles
- g. Arby's
- h. Subway
- i. Taco Bell
- j. Fire & Sticks Japanese Steakhouse
- k. City Barbeque
- l. Chophouse Steakhouse
- m. McAlister's Deli
- n. Starbucks
- o. Olive Garden
- p. Penn Station East Coast Subs
- q. Applebees
- r. Carolina's Diner
- s. Waffle House
- t. Kickback Jack's

## HOTELS

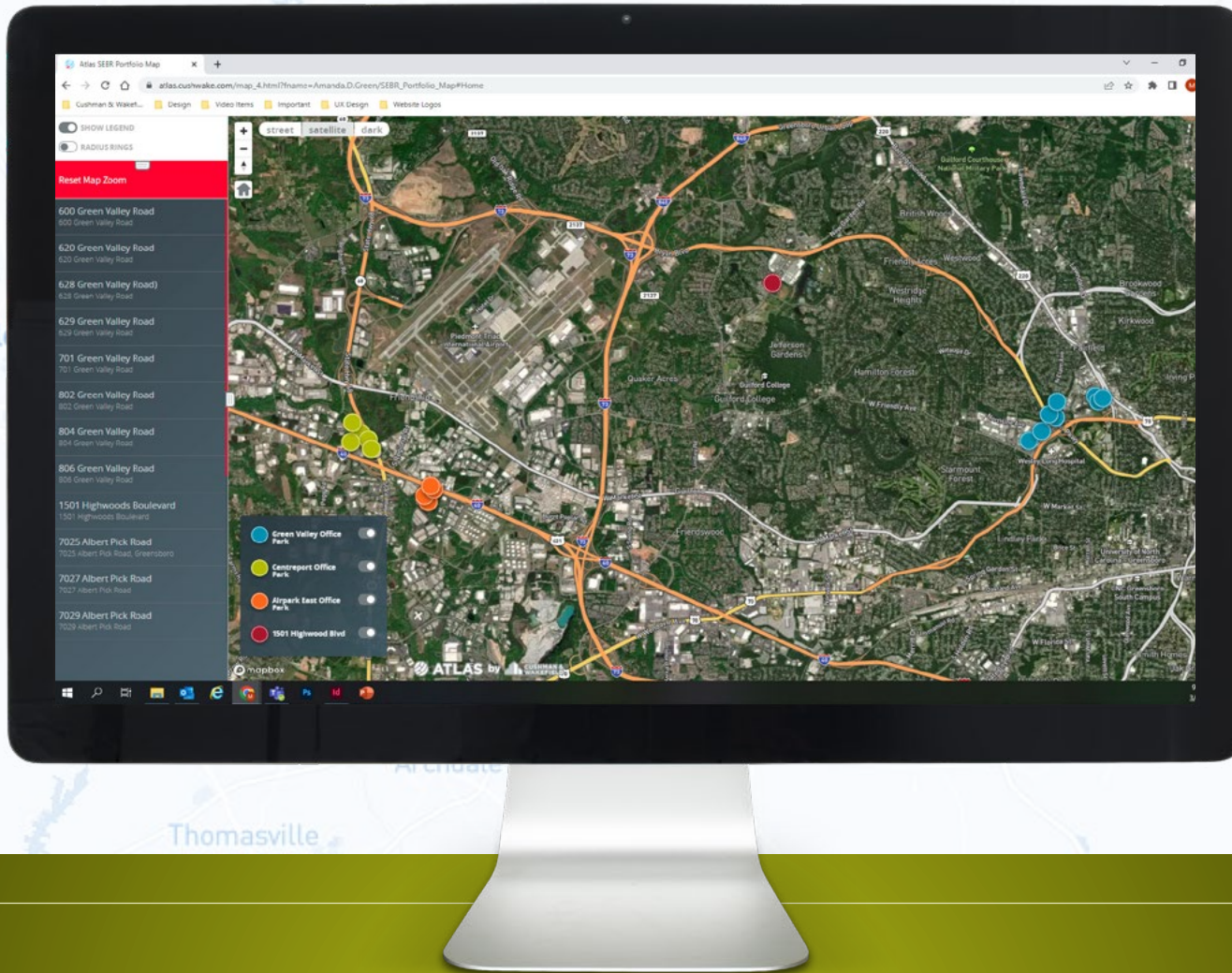
- a. Embassy Suites by Hilton
- b. Homewood Suites
- c. LaQuinta Inn & Suites by Wyndham
- d. Hampton Inn
- e. Hilton Garden Inn Greensboro Airport
- f. Courtyard by Marriott
- g. Wingate by Wyndham
- h. Four Points by Sheraton
- i. Fairfield by Marriott
- j. Holiday Inn Express
- k. Home 2 Suites by Hilton
- l. Residence Inn

## KEY DISTANCES

Location	Time	Distance
CBD Greensboro	16 minutes	12 miles
CBD Winston-Salem	23 minutes	18 miles
CBD High Point:	20 minutes	10 miles



CLICK BELOW FOR THE INTERACTIVE ATLAS MAP



For more information, please contact:

**KEVIN KEMP, SIOR**

Senior Director

+1 336 812 3307

kevin.kemp@cushwake.com

**RAFFI SIMEL, SIOR**

Senior Associate

+1 336 289 2541

raffi.simel@cushwake.com

