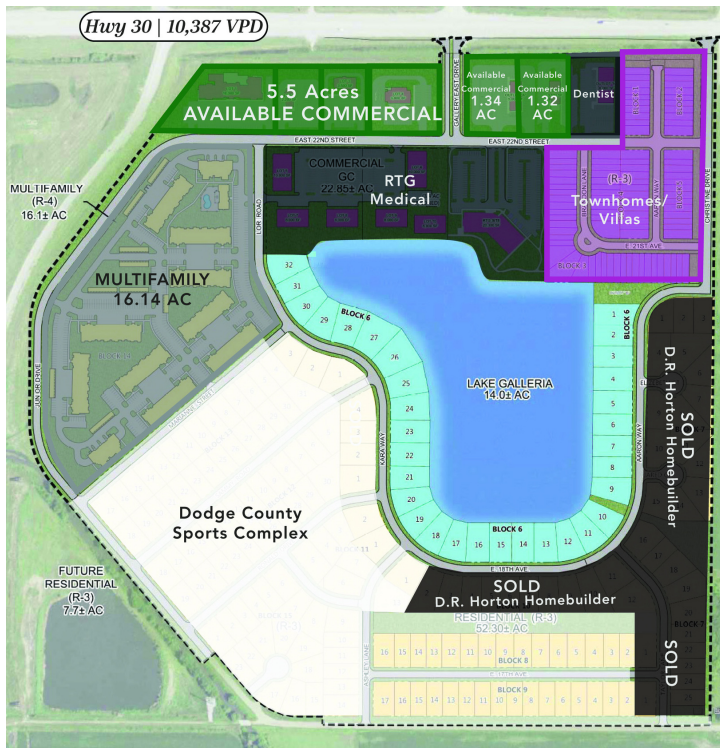


GALLERY 23

4551 E 23rd St, Fremont, NE 68025

MIXED USE LAND FOR SALE



PROPERTY DESCRIPTION

Positioned with exceptional visibility and convenient access from both Hwy 275 and Hwy 30. Located just minutes from West Omaha this is Fremont's largest new mixed-use development. Surrounded by thriving retail and residential growth, including D.R. Horton's residential lots and the newly opened RTG Medical campus with over 349 employees and future expansion plans, this location offers unmatched potential. Pads are rough graded with utilities to the lot line and lie adjacent to vibrant residential and apartment communities. The site is also near top national retailers such as Walmart, Menards, Aldi, Hobby Lobby, and Applebee's, serving a regional trade area of over 448,000 people. A unique feature of this development is the scenic 14-acre Lake Galleria, offering recreational opportunities like boating and lakeside activities—making this an ideal destination for businesses seeking visibility, growth, and lifestyle appeal.

PROPERTY HIGHLIGHTS

- Strategically located by Hwy 275 and Hwy 30
- Strong traffic counts with high visibility and easy access
- Proximity to major retailers in high growth market

OFFERING SUMMARY

Multifamily Lot:	\$3.75 PSF
Commercial Lots:	\$8-10 PSF



ACCESS Commercial, LLC

AMBER OLSON

amber@accesscommercial.com

402.618.5523

Senior Broker Associate

GALLERY 23

4551 E 23rd St, Fremont, NE 68025

FREMONT



FREMONT, NEBRASKA

Fremont is diverse, inclusive, and collaborative. Fremont is positioned for growth because of the community's strong foundation, agricultural heritage and skilled workforce. But that's not all the community is focused on. Fremont's leaders and residents are looking to the future and building upon the city's diversity to identify new opportunities for advancement and growth. Through inclusivity and collaboration, the city is poised to reach new heights. Fremont. Here We Grow.

- Fremont Chamber of Commerce

TOP 10 EMPLOYERS

- Valmont Industries
- Wholestone Farms
- Lincoln Premium Poultry
- Methodist Fremont
- Fremont Public Schools
- Nye Health Services
- Hy-Vee Food Stores, Inc. Fremont Contract Carriers, Inc.
- YMCA
- Fremont Beef Company



ACCESS Commercial, LLC

AMBER OLSON

amber@accesscommercial.com

402.618.5523

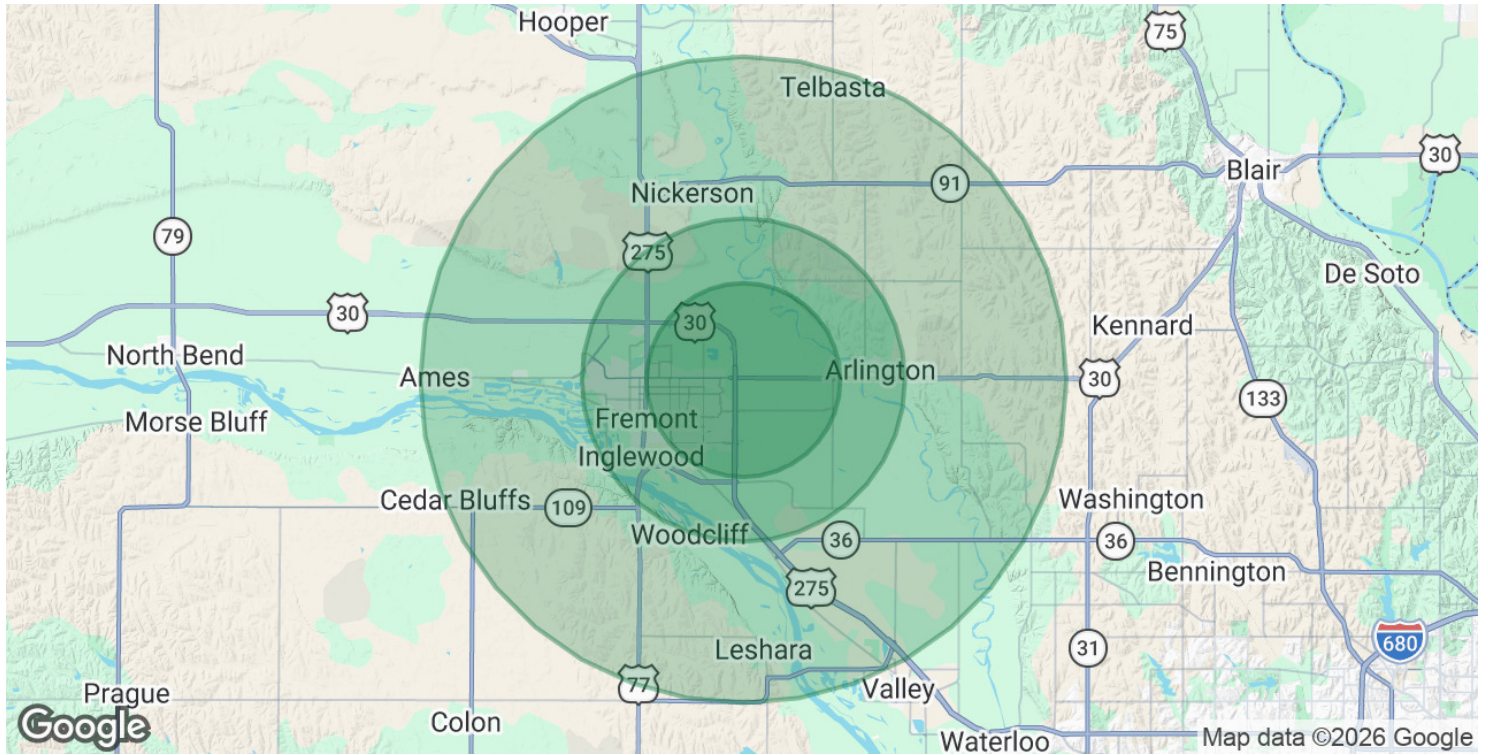
Senior Broker Associate

GALLERY 23

4551 E 23rd St, Fremont, NE 68025

MIXED USE FOR SALE

DEMOGRAPHICS MAP & REPORT



POPULATION	3 MILES	5 MILES	10 MILES
Total Population	17,014	30,445	37,452
Daytime Population	15,886	28,275	33,577
Employees in Area	9,145	15,779	19,382

HOUSEHOLDS & INCOME	3 MILES	5 MILES	10 MILES
Total Households	6,768	12,005	14,751
Average HH Income	\$91,159	\$88,356	\$94,148
Median HH Income	\$76,975	\$73,643	\$77,181

2020 American Community Survey (ACS)



ACCESS Commercial, LLC

AMBER OLSON

amber@accesscommercial.com

402.618.5523

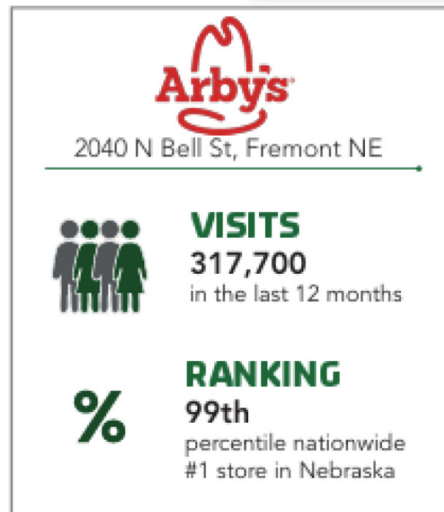
Senior Broker Associate

GALLERY 23

4551 E 23rd St, Fremont, NE 68025

PLACER.AI DATA

Placer.ai Software offers transformative benefits for businesses by providing real-time, location-based consumer insights that drive smarter decision-making. With its robust data analytics capabilities, ACCESS uses it to help business owners glean insight into foot traffic, understand customer behavior, and analyze competitive trends with unparalleled accuracy. Whether optimizing site selection, tailoring marketing strategies, or measuring the effectiveness of campaigns, we use Placer.ai to equip businesses with actionable intelligence to stay ahead in dynamic markets. Its intuitive interface and visual reports make complex data accessible, empowering teams to make data-driven decisions that enhance operational efficiency and boost ROI.



ACCESS Commercial, LLC

AMBER OLSON

amber@accesscommercial.com

402.618.5523

Senior Broker Associate

GALLERY 23

4551 E 23rd St, Fremont, NE 68025

DODGE COUNTY SPORTS COMPLEX

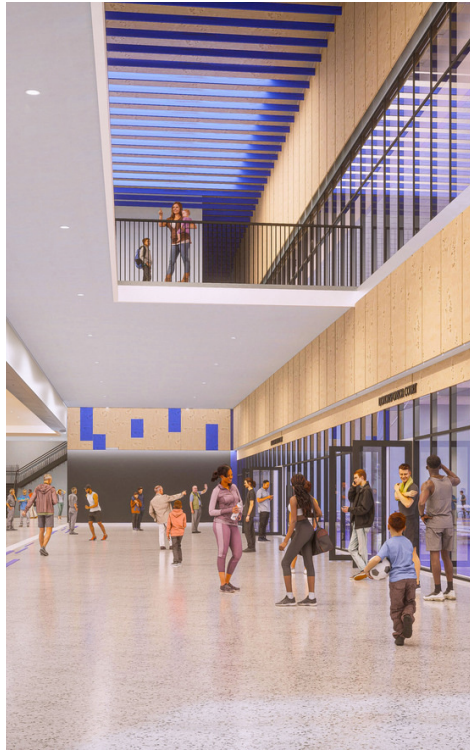
The Dodge County Sports Complex will be a community-managed, nonprofit sports facility built to address the growing needs of our youth community. It will allow local athletes the opportunity to seek training, instruction, and competition right here in Fremont. This will allow all youth of the Dodge County area including those who can't afford to travel out of the city for select sports the opportunities to compete at a higher level.

Indoor:

- (12) Full-size Volleyball Courts convertible to (6) Full-size Basketball Courts
- (1) 40k Sq Ft of synthetic turf netted to include (1) 90 x 90 infield and smaller, (6) batting and pitching tunnels, and flex space for soccer and performance training.
- (4) Sand Volleyball Courts
- (6) Pickleball Courts
- (1) Concessions area with common space
- Restrooms/locker rooms
- (3) Conference Rooms on the second level.

Estimated Ancillary Development:

- (1) Fast Dining Sports Bar
- (1) New Limited-Service Hotels
- (2) Fast Food Dining Restaurants
- 6k Sq Ft of Strip Retail



ACCESS Commercial, LLC

AMBER OLSON

amber@accesscommercial.com

402.618.5523

Senior Broker Associate

GALLERY 23

4551 E 23rd St, Fremont, NE 68025

DODGE COUNTY SPORTS COMPLEX FLOOR PLANS



FIRST LEVEL FLOOR PLAN



SECOND LEVEL FLOOR PLAN



ACCESS Commercial, LLC

AMBER OLSON

amber@accesscommercial.com

402.618.5523

Senior Broker Associate

GALLERY 23

4551 E 23rd St, Fremont, NE 68025

LISTING TEAM



AMBER OLSON

Senior Broker Associate

amber@accesscommercial.com

Direct: 402.618.5523

PROFESSIONAL BACKGROUND

Amber brings 20 years of commercial real estate experience to our team at ACCESS. Her role as a Senior Brokerage Associate is primarily focused on shopping center leasing at a national and local level, with over three million square feet represented. Her industry expertise enhances our team through her knowledge of sales, landlord and tenant representation, relationship building, property management, and development. Amber majored in Business Administration at the University of Nebraska-Lincoln.

RECENT TRANSACTIONS

- Golf Galaxy - 120th & L St, Omaha, NE
- Ace Hardware - Shadow Lake, Papillion, NE
- Barnes & Nobles- Shadow Lake, Papillion, NE
- Sierra - Manawa Centre, Council Bluffs, IA
- Ross Dress for Less- Manawa Centre, Council Bluffs, IA
- Homegoods - Manawa Centre, Council Bluffs, IA

All rights reserved. This information has been obtained from sources believed reliable but has not been verified for accuracy or completeness. ACCESS Commercial, LLC, makes no guarantee, representation or warranty and accepts no responsibility or liability as to the accuracy, completeness, or reliability of the information contained herein. You should conduct a careful, independent investigation of the property and verify all information. Any reliance on this information is solely at your own risk. ACCESS and the ACCESS logo are service marks of ACCESS Commercial, LLC. All other marks displayed on this document are the property of their respective owners, and the use of such marks does not imply any affiliation with or endorsement of ACCESS. Photos herein are the property of their respective owners. Use of these images without the express written consent of the owner is prohibited. (021523_JR)



ACCESS Commercial, LLC

AMBER OLSON

amber@accesscommercial.com

402.618.5523

Senior Broker Associate