

BLOCK: \_\_\_\_\_ LOT: \_\_\_\_\_

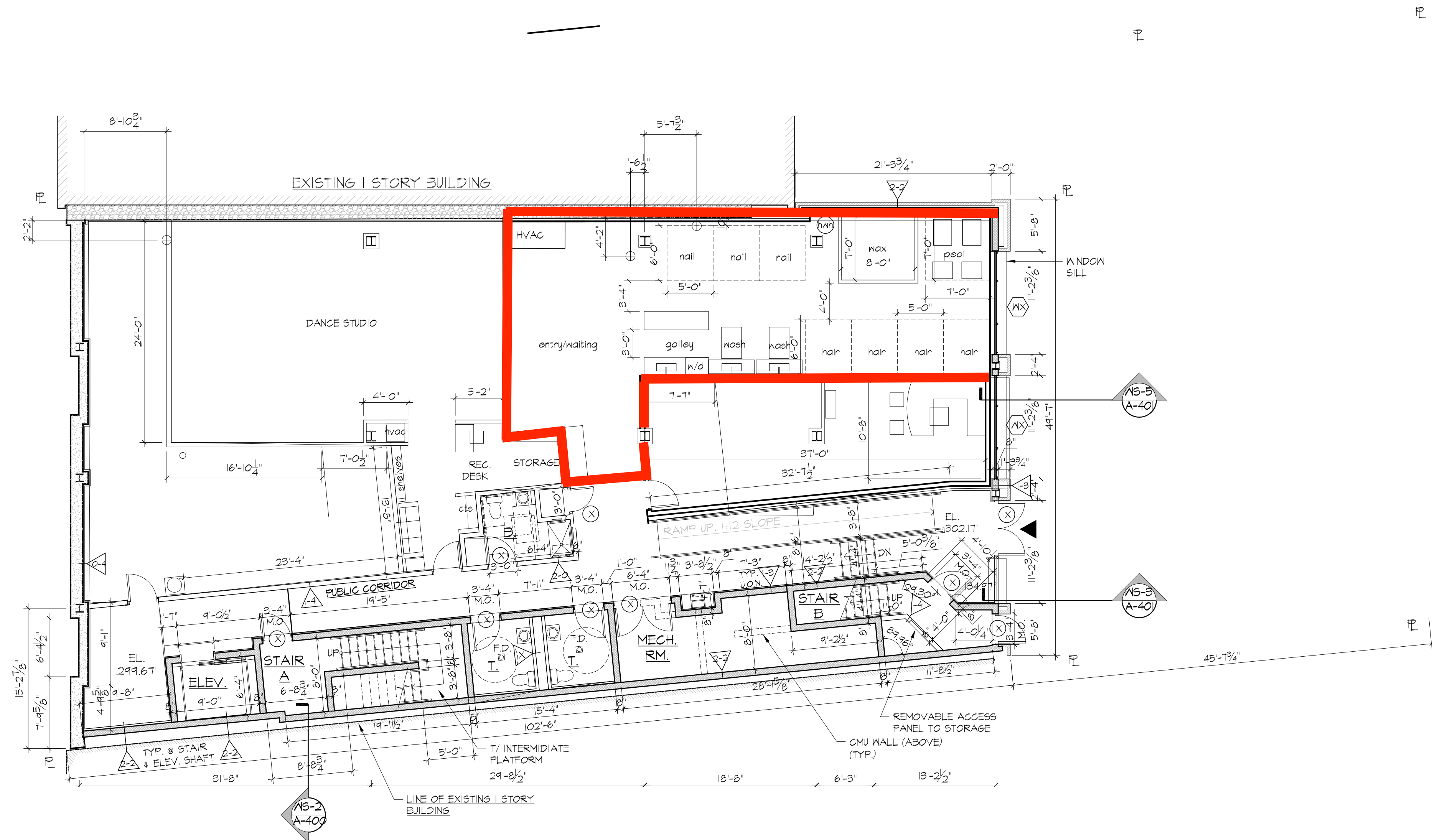
ARCHITECT:  
AUFGANG ARCHITECTS LLC  
49 NORTH AIRMONT RD.  
SUFFERN, NY  
INFO@AUFGANG.COM 845.368.0004

DEVELOPER: \_\_\_\_\_

STRUCTURAL ENGINEER: \_\_\_\_\_

MEP ENGINEER: \_\_\_\_\_

**AUFGANG  
ARCHITECTS**



**BASEMENT FLOOR PLAN**  
SCALE: 1/8" = 1'-0"

**WALL TYPE LEGEND:**

**NON RATED**

- FURRING AT INTERIOR MASONRY WALL - (1) LAYER 5/8" TYPE "X" GYPSUM BOARD OVER 1/2" METAL CHANNELS @ 16" O.C.
- CHASEWALL - (1) LAYER 5/8" TYPE "X" WATER RESISTANT GYPSUM BOARD ONE SIDE OF 2 1/2" METAL STUDS @ 16" O.C.
- FURRING AT INTERIOR CMU WALL (PUBLIC CORRIDOR) (1) LAYER 5/8" TYPE "X" GYPSUM BOARD OVER 3/8" METAL FURRING CHANNELS @ 16" O.C.
- FURRING AT EXTERIOR MASONRY WALL - (1) LAYER 5/8" GYP. BD. OVER 2" INSOFAST UX 2.0 ENGINEERED INSULATION PANEL (TYP.)

**1 HOUR RATED**

- 1 HOUR RATED TENANT SEPARATION PARTITION - (1) LAYER OF 5/8" TYPE "X" GYPSUM BOARD ON EACH SIDE OF 3 3/8" METAL STUDS @ 16" O.C. WITH 3 1/2" SOUND ATTENUATION INSULATION. EXTEND STUDS & GYPSUM BOARD UP TO UNDERSIDE OF CONCRETE DECK & SEAL TIGHT TO UNDERSIDE OF FLOOR DECK OR ROOF DECK W/ CONT. FIRESTOP SEALANT & FIRE SAFING INSULATION. (UL # U419) (STC 51)
- 1 HOUR RATED TENANT SEPARATION CHASEWALL - (2) ROWS OF (1) LAYER 5/8" TYPE "X" GYPSUM BOARD ON ONE SIDE OF 2 1/2" METAL STUDS @ 24" O.C. EXTEND GYPSUM BOARD & STUDS UP TO UNDERSIDE OF FLOOR DECK OR ROOF DECK. SEAL TIGHT TO UNDERSIDE OF FLOOR/DECK W/ CONT. FIRESTOP SEALANT. (UL #V442) (PROVIDE INSUL. AS REQ'D TO ACHIEVE A MIN STC RATING OF 50)

**1 HOUR RATED CMU WALL** - CMU WITH CONT. GALVANIZED HORIZONTAL TRUSS TYPE REINFORCING AT ALTERNATE BLOCK COURSES. SEAL TOP OF CONCRETE BLOCK WALL TIGHT TO UNDERSIDE OF CONCRETE DECK OR DECK ABOVE WITH CONT. FIRESTOP SEALANT AND FIRE SAFING INSULATION WHERE GAP EXIST. BETWEEN TOP OF WALL AND BOTTOM OF DECK (UL #R906)

**1 HOUR RATED PARTITION** - (1) LAYERS OF 5/8" TYPE "X" GYPSUM BOARD ON ONE SIDE OF 3 3/8" METAL STUDS @ 16" O.C. WITH 3 1/2" SOUND ATTENUATION INSUL. EXTEND GYP. BD. & STUDS UP TO UNDERSIDE OF FLOOR DECK OR ROOF DECK. SEAL TIGHT TO PLANK W/ CONT. FIRESTOP SEALANT (6A FILE #NP-1522 STC 55-59)

**2 HOUR RATED**

- 2 HOUR RATED PARTITION - (2) LAYERS OF 5/8" TYPE "X" GYPSUM BOARD ON EACH SIDE OF 3 3/8" METAL STUDS @ 16" O.C. WITH 3 1/2" SOUND ATTENUATION INSULATION. EXTEND GYPSUM BOARD & STUDS UP TO UNDERSIDE OF FLOOR DECK OR ROOF DECK. SEAL TIGHT TO DECK W/ CONT. FIRESTOP SEALANT & FIRE SAFING. (6A FILE #NP-1522 STC 55-59)
- 2 HOUR RATED CMU WALL - CMU WITH CONT. GALVANIZED HORIZONTAL TRUSS TYPE REINFORCING AT ALTERNATE BLOCK COURSES. SEAL TOP OF CONCRETE BLOCK WALL TIGHT TO UNDERSIDE OF CONCRETE DECK OR DECK ABOVE WITH CONT. FIRESTOP SEALANT AND FIRE SAFING INSULATION WHERE GAP EXIST. BETWEEN TOP OF WALL AND BOTTOM OF DECK (UL #R906)
- 2 HOUR RATED MECHANICAL SHAFT WALL - (2) LAYERS OF 5/8" TYPE "X" GYPSUM BOARD ON EACH SIDE OF 2 1/2" METAL C-H STUDS @ 24" O.C. WITH (1) LAYER OF 1" TYPE "X" GYP. PANEL ON SHAFT SIDE WITH 1" MINERAL FIBER INSUL. IN CAVITY. SEAL TOP OF WALL TIGHT TO UNDERSIDE OF PLANK WITH CONT. FIRESTOP SEALANT. (6A FILE #NP-1095) (UL 415 - STC 48)

- LEGEND:**
- CONCRETE WALL
  - CONCRETE BLOCK WALL
  - GYPSUM BOARD PARTITION - SEE PLAN FOR SIZE
  - MASONRY VENEER
  - PARTITION - SEE WALL TYPE LEGEND
  - HANDICAP ADAPTABLE APARTMENT UNIT
  - CONCRETE COLUMN
  - 5'-0" DIAMETER CLEAR HANDICAP FLOOR TURNING SPACE
  - T' FLOOR TURNING SPACE
  - 30' x 48" CLEAR FLOOR SPACE
  - FIRE RATED SHAFT WALL
  - WINDOW-SEE WINDOW SCHEDULE ON DWG. A-601
  - DOOR & FRAME - SEE DOOR SCHEDULE DRAWINGS A-600
  - CARBON MONOXIDE DETECTOR
  - EXIT LIGHT AND SIGN - CEILING MOUNTED
  - ELECTRICAL / LOW VOLT PANEL UNIT
  - SUSPENDED GYPSUM BOARD

- GENERAL NOTES:**
- FOR KITCHEN AND TOILET ELEVATIONS SEE INTERIOR DESIGN DRAWINGS.
  - S.C. SHALL COORDINATE SIZE & LOCATION OF ALL HVAC OPENINGS IN CONC DECK WITH MECHANICAL DRAWINGS.
  - CONTRACTOR SHALL COORDINATE SIZE AND LOCATION OF ALL MASONRY OPENINGS AT ELEVATOR ENTRANCES WITH ELEVATOR VENDOR.
  - ALL ENLARGED PLAN DIMENSIONS ARE TAKEN FINISH TO FINISH (U.O.N.).
  - INTERIOR FINISHES SHALL BE INCLUDED ON THE INTERIOR DESIGN DRAWINGS AND SPECIFICATIONS.
  - DESIGN OF COMMON AREAS, (LOBBY, LOUNGE, PARTY ROOM, ETC.) ARE SUBJECT TO CHANGE AS PER INTERIOR DESIGN DRAWINGS AND SPECIFICATIONS.
  - PROVIDE OPENING PROTECTIVE AT ALL LOT LINE WINDOWS.
  - INSULATE ALL PIPES IN ALL EXTERIOR CHASE WALL.
  - PROVIDE CONC. ROOF PAVERS AT ALL TENANT TERRACE LOCATIONS (TYP.).

08-27-15	AS-BUILT
12-9-14	ISSUED TO FIELD
11-18-14	ISSUED TO FIELD
DATE	SUBMISSIONS / REVISIONS
SHEET TITLE:	

**BASEMENT FLOOR PLAN**

THIS DRAWING IS AN INSTRUMENT OF SERVICE AND SHALL REMAIN THE PROPERTY OF AUFGANG ARCHITECTS LLC. WHETHER THE PROJECT FOR WHICH IT IS MADE IS EXECUTED OR NOT, THIS DRAWING SHALL NOT BE USED BY THE OWNER OR OTHERS ON OTHER PROJECTS, FOR ADDITIONS TO THIS PROJECT OR FOR COMPLETION OF THIS PROJECT BY OTHERS EXCEPT BY AGREEMENT IN WRITING WITH AUFGANG ARCHITECTS LLC. SUBMISSION OR DISTRIBUTION TO MEET OTHER REGULATORY REQUIREMENTS OR FOR OTHER PURPOSES BY CONTRACTOR WITH THE PROJECT IS NOT TO BE CONSIDERED AS PUBLICATION OR REPRODUCTION OF THIS DRAWING IN ANY MANNER WITHOUT THE WRITTEN PERMISSION OF AUFGANG ARCHITECTS LLC. WITHOUT PREJUDICE.		SEAL & SIGNATURE
ISSUE DATE:	PROJECT NO:	
08-15-14	#1416	
DRAWN BY:	CHECKED BY:	
NB/AR		
SCALE:	SHEET NO:	
DRAWING NO:		

A-100.00