

# 33,000 Sq. Ft. Warehouse FOR LEASE



**5411-A Pioneer Park Blvd.  
Tampa, FL 33634**



<b>TOTAL SIZE:</b>	33,000 Sq. Ft.
<b>OFFICE:</b>	2,800 Sq. Ft.
<b>MEZZANINE:</b>	FREE
<b>WAREHOUSE:</b>	30,200 Sq. Ft.
<b>LOADING:</b>	2 Dock High Doors (10'X10') 1 Dock High Door (10'x20')
<b>CLEAR HEIGHT:</b>	24 Feet
<b>POWER:</b>	3 Phase/240 & 480 Volt
<b>SPRINKLERS:</b>	Standard System
<b>LEASE RATE:</b>	\$11.35* NNN

\*The lease rate is based on a 5-year lease term

**Industrial Property Group, Inc.**

Licensed Real Estate Broker

[www.ipgcommercialrealty.com](http://www.ipgcommercialrealty.com)

2202 N. Westshore Blvd. • Suite 200 • Tampa, FL 33607

FOR MORE INFORMATION CONTACT:

**CRAIG M. CAPO**

Cell: 813.335.3361

[craig@ipgcommercialrealty.com](mailto:craig@ipgcommercialrealty.com)

**KELLI HATTON**

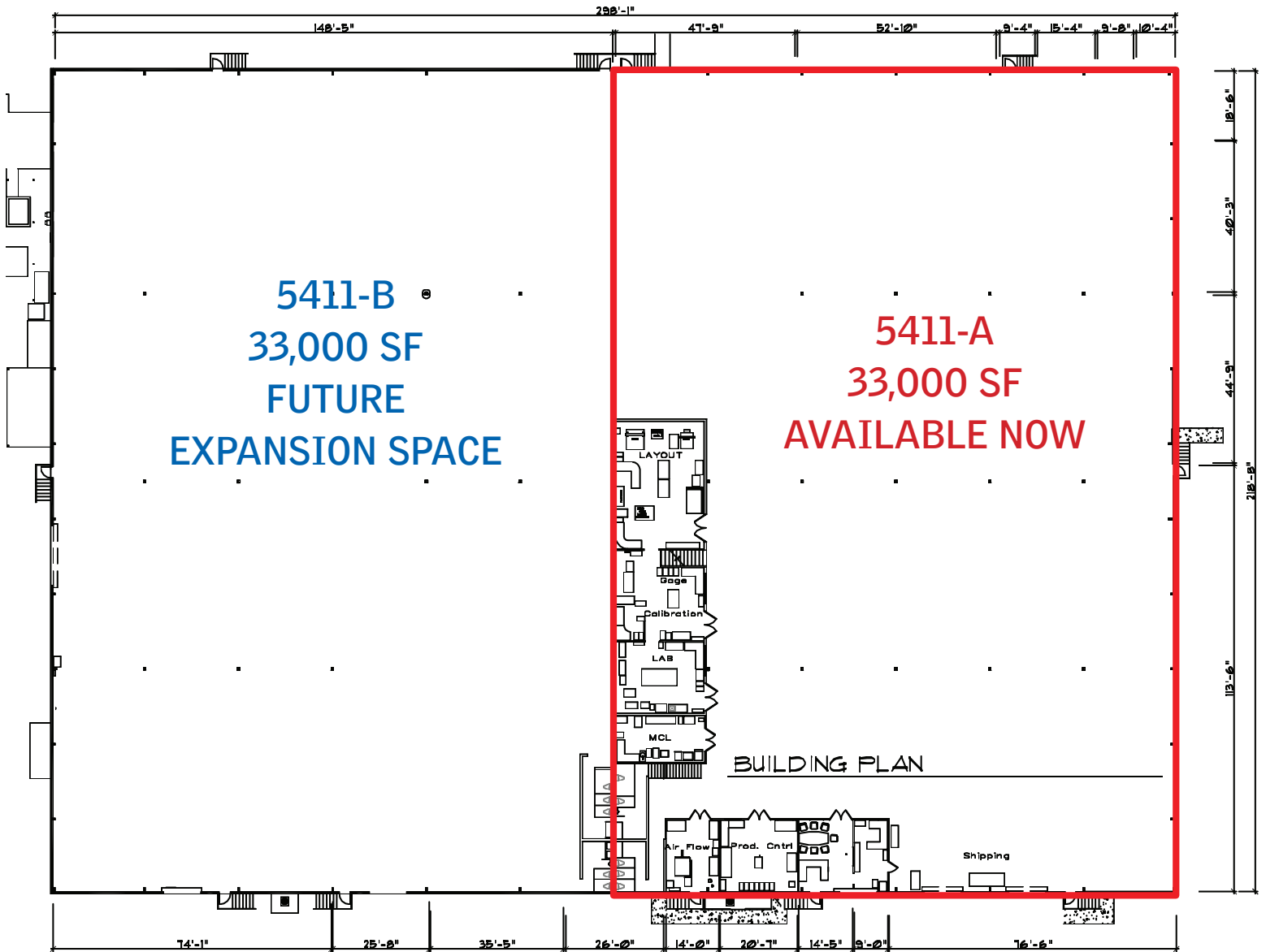
Cell: 813.454.1619

[kelli@ipgcommercialrealty.com](mailto:kelli@ipgcommercialrealty.com)



No warranty or representation, expressed or implied, is made as to the accuracy of the information contained herein, and same is submitted subject to errors, omissions, change of price, rental or other conditions, withdrawal without notice, and to any special listing conditions imposed by our principals.

# 5411-A Pioneer Park Blvd. Tampa, FL 33634



## Industrial Property Group, Inc.

Licensed Real Estate Broker

[www.ipgcommercialrealty.com](http://www.ipgcommercialrealty.com)

2202 N. Westshore Blvd. • Suite 200 • Tampa, FL 33607

FOR MORE INFORMATION CONTACT:

**CRAIG M. CAPO**

Cell: 813.335.3361

[craig@ipgcommercialrealty.com](mailto:craig@ipgcommercialrealty.com)

**KELLI HATTON**

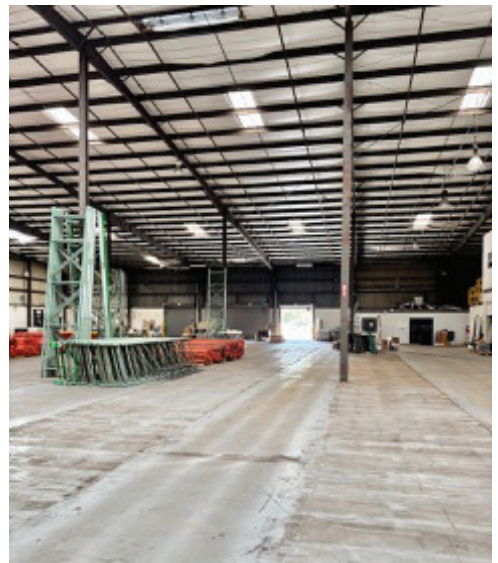
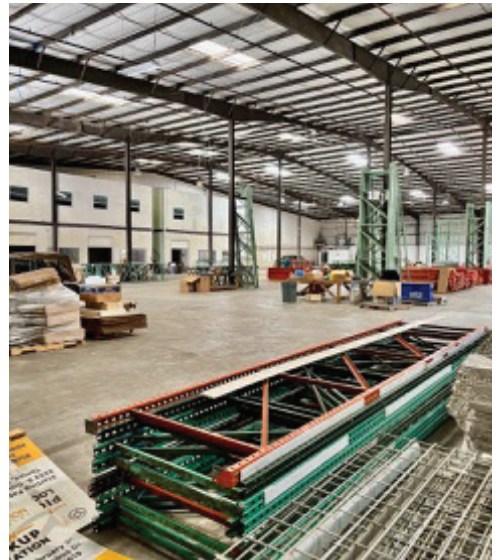
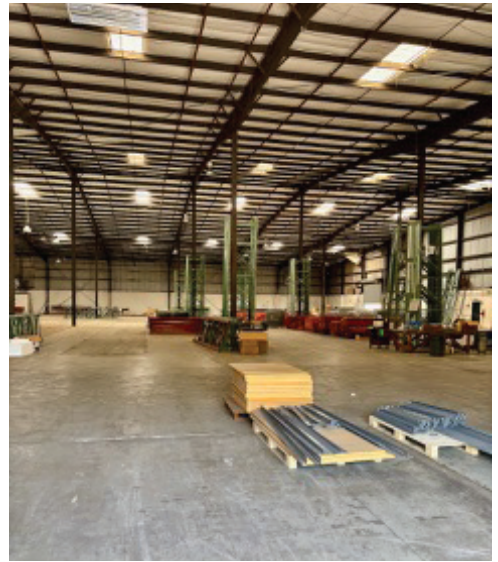
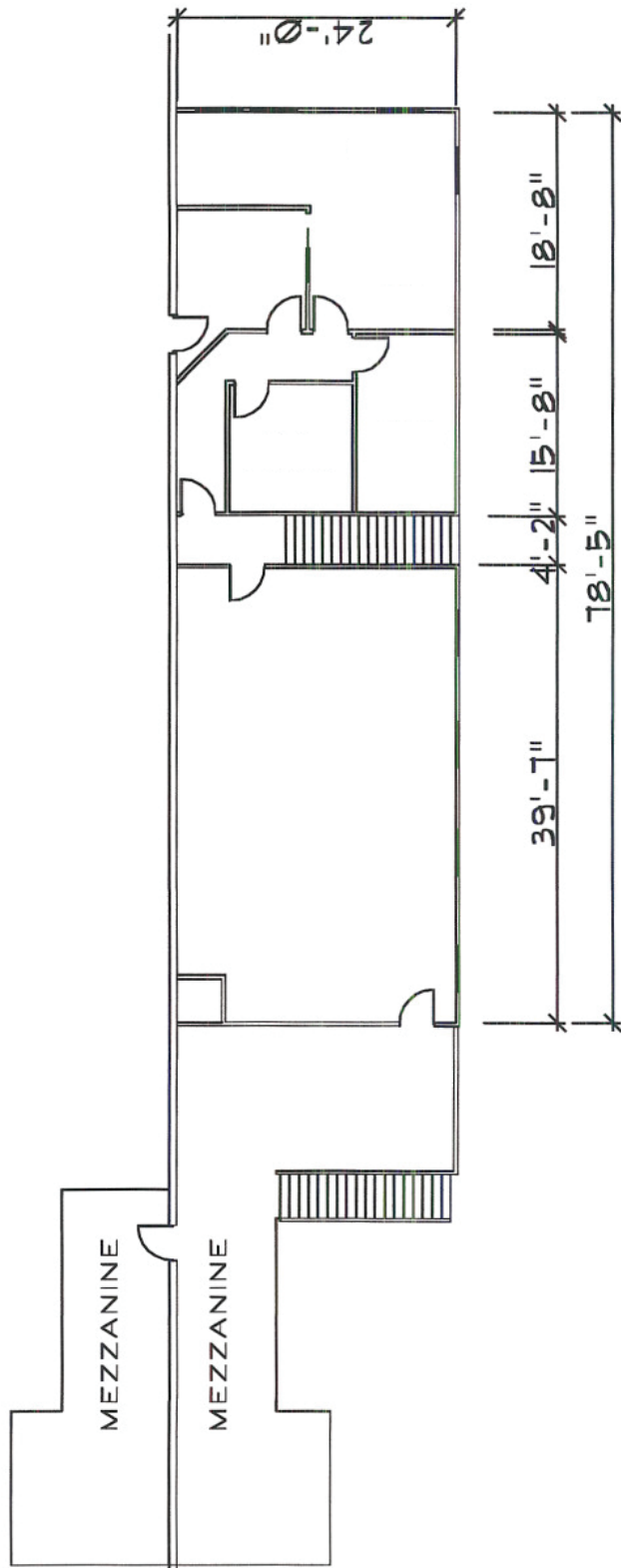
Cell: 813.454.1619

[kelli@ipgcommercialrealty.com](mailto:kelli@ipgcommercialrealty.com)



No warranty or representation, expressed or implied, is made as to the accuracy of the information contained herein, and same is submitted subject to errors, omissions, change of price, rental or other conditions, withdrawal without notice, and to any special listing conditions imposed by our principals.

# 5411-A Pioneer Park Blvd. Tampa, FL 33634



## Industrial Property Group, Inc.

Licensed Real Estate Broker

[www.ipgcommercialrealty.com](http://www.ipgcommercialrealty.com)

2202 N. Westshore Blvd. • Suite 200 • Tampa, FL 33607

FOR MORE INFORMATION CONTACT:

**CRAIG M. CAPO**

Cell: 813.335.3361

[craig@ipgcommercialrealty.com](mailto:craig@ipgcommercialrealty.com)

**KELLI HATTON**

Cell: 813.454.1619

[kelli@ipgcommercialrealty.com](mailto:kelli@ipgcommercialrealty.com)



No warranty or representation, expressed or implied, is made as to the accuracy of the information contained herein, and same is submitted subject to errors, omissions, change of price, rental or other conditions, withdrawal without notice, and to any special listing conditions imposed by our principals.