

# Whispering Wind

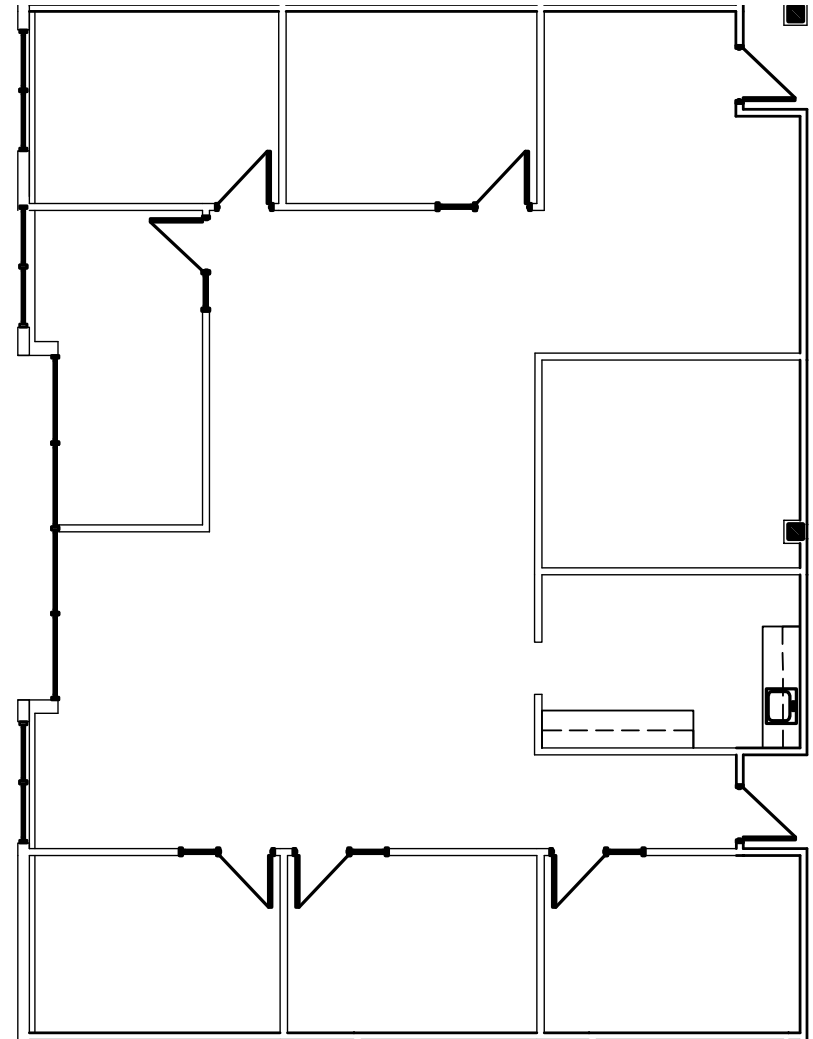
CORPORATE CENTER

2205 & 2225 W WHISPERING WIND DRIVE

AVAILABLE

SUITE 105

+ SUITE 105 ±3,136 RSF



FOR MORE INFORMATION PLEASE CALL

KYLE CAMPBELL  
Executive Vice President  
602 222 5062  
kyle.campbell@colliers.com

MATT BANISZEWSKI  
Vice President  
602 222 5176  
matt.baniszewski@colliers.com

This document/email has been prepared by Colliers International for advertising and general information only. Colliers International makes no guarantees, representations or warranties of any kind, expressed or implied, regarding the information including, but not limited to, warranties of content, accuracy and reliability. Any interested party should undertake their own inquiries as to the accuracy of the information. Colliers International excludes unequivocally all inferred or implied terms, conditions and warranties arising out of this document and excludes all liability for loss and damages arising there from. This publication is the copyrighted property of Colliers International and /or its licensor(s). © 2026. All rights reserved. This communication is not intended to cause or induce breach of an existing listing agreement

