

Downtown
Winston-Salem

NC School
of the Arts

Sunnyside Avenue



FOR LEASE

FLEX AVAILABLE, 1,200-12,300+/- SF
2101 SUNNYSIDE AVENUE | WINSTON-SALEM, NC

LEE CHEWNING
ABNER WRIGHT

FREEMAN | COMMERCIAL REAL ESTATE

336.768.4410
lee@freemancommercial.com
abner@freemancommercial.com

PROPERTY SUMMARY

2101 Sunnyside Avenue
Winston-Salem, NC 27127

BLDG SIZE: 12,300 +/- SF (warehouse & conditioned office)
LAND AREA: .51 +/- AC
ZONING: LI (Light Industrial)
LEASE RATES: See page 3

HIGHLIGHTS

- Warehouse & conditioned office space (office to be refurbished to tenant needs)
- Recent upgrades and varying lease options (see pg. 3)
- Fenced parking and laydown yard
- Rollup/drive-in doors
- Box truck (2 foot) dock
- Convenient to downtown Winston-Salem and NC School



DEMOGRAPHICS	3 MILES	5 MILES	7 MILES
POPULATION	70,677	150,111	243,227
HOUSEHOLDS	30,592	61,363	100,584
TOTAL BUSINESSES	3,826	6,990	9,660

LEE CHEWNING

O: 336-768-4410

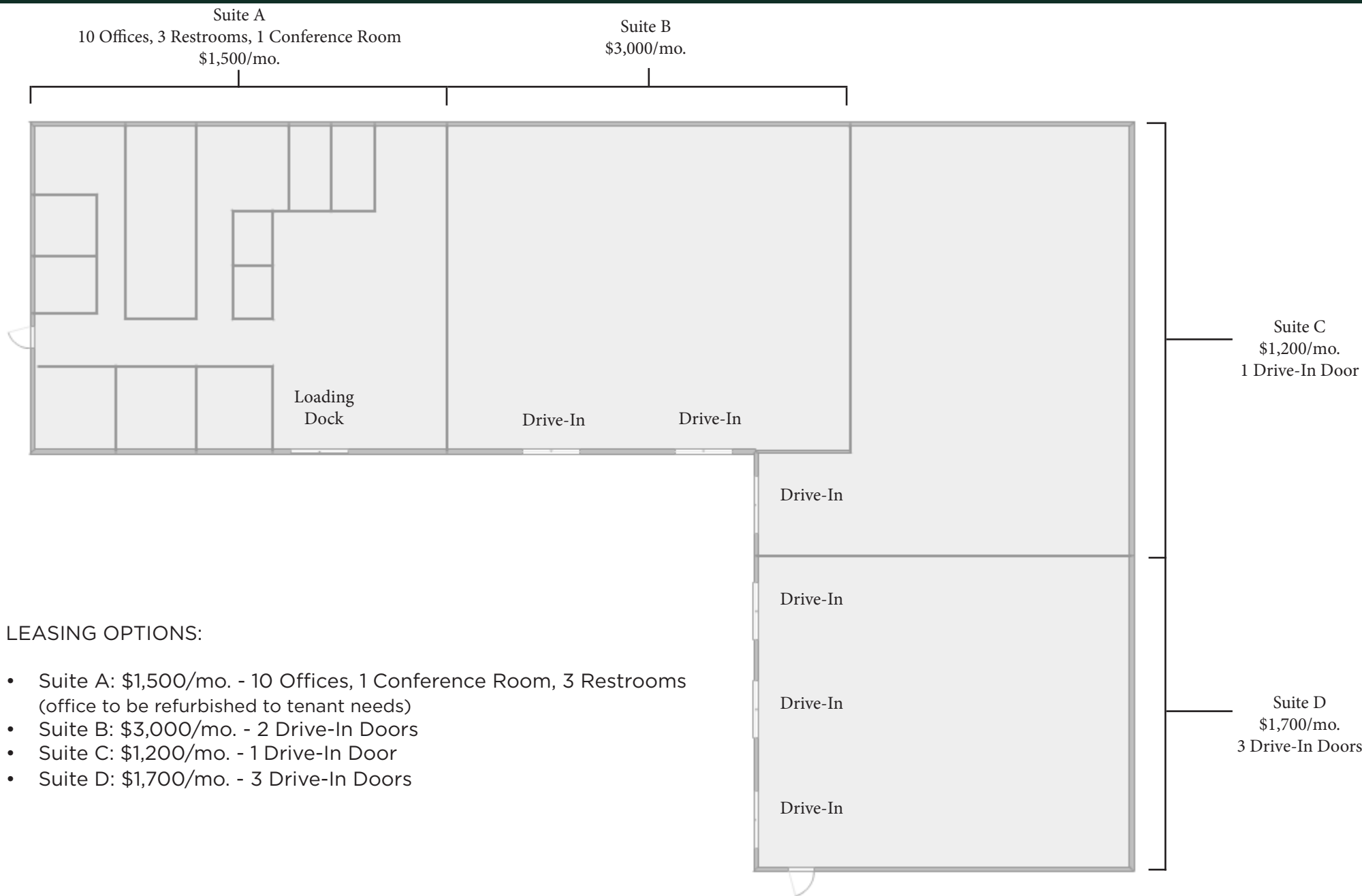
M: 336-655-8063

lee@freemancommercial.com

ABNER WRIGHT

O: 336-768-4410

abner@freemancommercial.com



LEASING OPTIONS:

- Suite A: \$1,500/mo. - 10 Offices, 1 Conference Room, 3 Restrooms (office to be refurbished to tenant needs)
- Suite B: \$3,000/mo. - 2 Drive-In Doors
- Suite C: \$1,200/mo. - 1 Drive-In Door
- Suite D: \$1,700/mo. - 3 Drive-In Doors



University of NC
School of the Arts

Center Stage
Apartments

Sunnyside Avenue

1255 CREEKSHIRE WAY SUITE 200 WINSTON-SALEM NC 27103 | WWW.FREEMANCOMMERCIAL.COM

No warranty or representation is made to the accuracy of the information contained herein.
All information is subject to change or withdrawal. No liability is assumed for any inaccuracy of any information.



Building Front

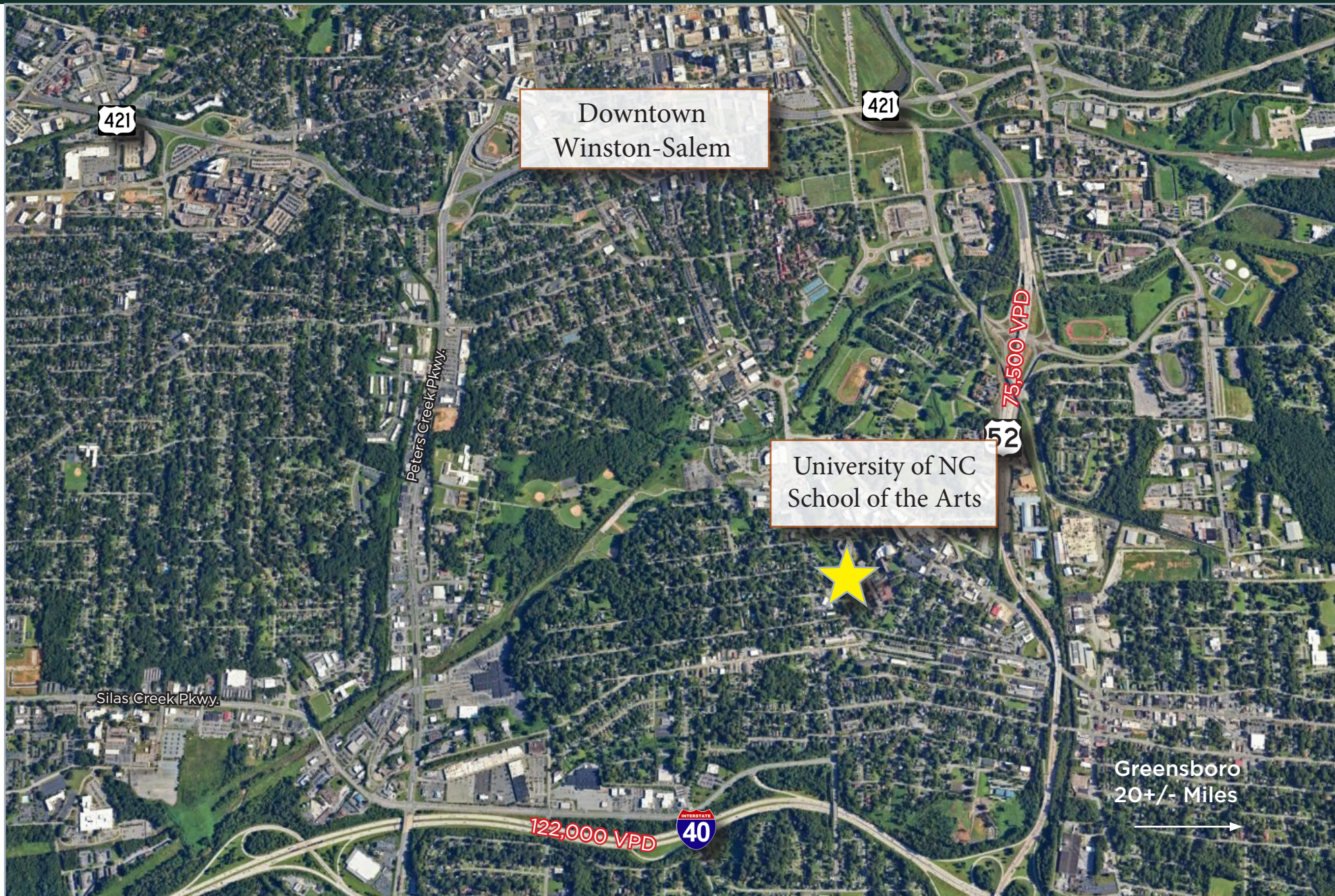


Roll-Up Doors



Dock Door





1255 CREEKSHIRE WAY SUITE 200 WINSTON-SALEM NC 27103 | WWW.FREEMANCOMMERCIAL.COM

No warranty or representation is made to the accuracy of the information contained herein.
All information is subject to change or withdrawal. No liability is assumed for any inaccuracy of any information.