

FOR LEASE

Retail
Urban Storefront

the
WATERLINE
apartments

Downtown Everett, WA



2900 Grand Avenue

Eclipse
REAL ESTATE GROUP

Summary

The Waterline Apartments are a remarkable 220-unit mixed-use development strategically located in the heart of Downtown Everett. This vibrant urban hub features retail spaces spanning the entire block, with expansive floor-to-ceiling windows that let in abundant natural light and enhance visibility for passersby. The design thoughtfully separates residential and commercial parking, each with its own entrance and elevator service, providing a total of 220 dedicated parking stalls for residents and 87 for commercial use.

The area is bustling with daytime pedestrian traffic, driven by a surge in downtown apartment projects and in the surrounding neighborhoods. Additionally, ongoing waterfront developments along the bay and riverside amplify demand for dining, entertainment, and services, creating a lively atmosphere from morning until night. Waterline's prime location and innovative design empower tenants to establish a significant and enduring presence in downtown Everett.

Amenities

Residential lobby with on-site leasing and management office

220 Luxury Pet Friendly Apartment Units

Rooftop Sky Lounge and Dog Park

220 residential parking stalls

87 commercial parking stalls

4,200 SF Courtyard

Residential Lobby with On-Site Leasing and Management Offices

Enclosed Loading Dock Area

Fully Sprinklered

Availabilities

Approx. 1,691 to 9,980 contiguous SF

Negotiable Base Rent Rates

NNN Leases

10 - Year Lease Term

Regulatory

Mixed Use 25 (MU-25) Zoning

Street Designation - Pedestrian



Waterline Tenants

The story continues...write yours



Choux
Choux
BAKERY

URBAN YOGIS
MODERN YOGA

SUMMIT
EVERETT

GRANDLINE
GAMES

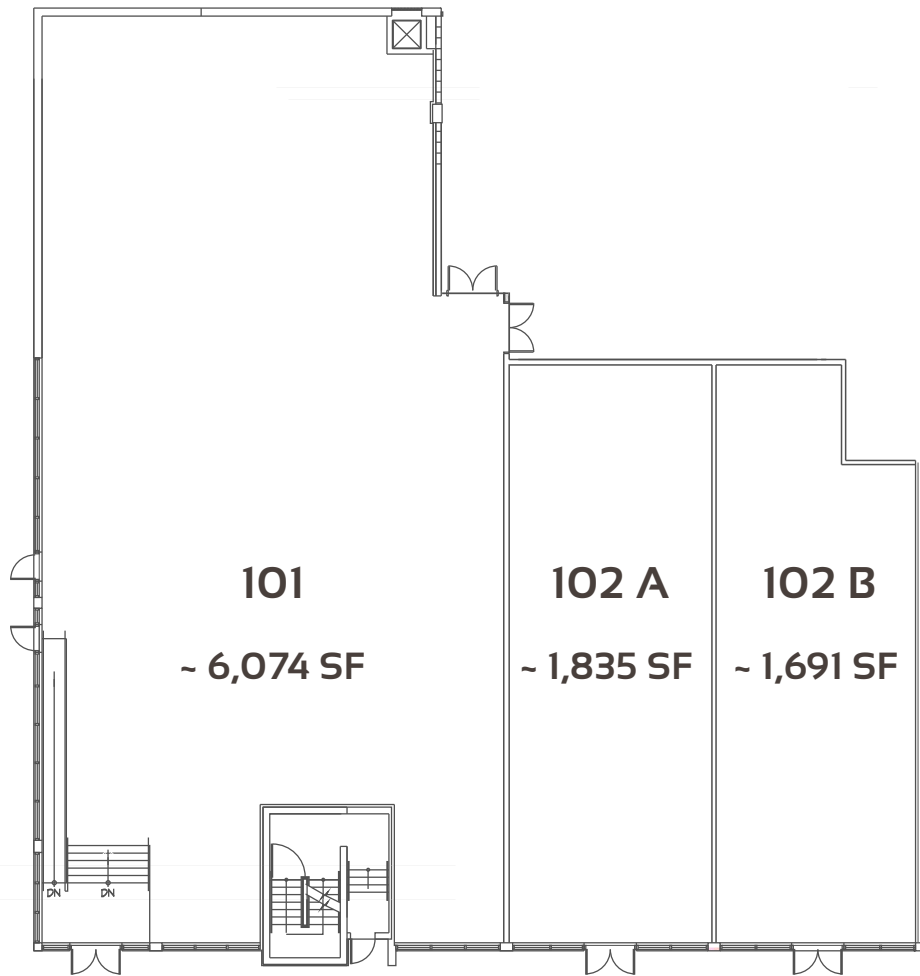
TO BE
ANNOUNCED

RESTAURANT / TAPROOM
EVENT SPACE

Eclipse
REAL ESTATE GROUP

Available Spaces

Approx. 1,111 to 9,980 contiguous SF



~ 15' Ceiling Height

Floor to Ceiling Windows

Frontage: ~110' (Wall St.) x ~130' (Grand Ave.)

Cold Grey Shell Condition

Concrete PT Floor

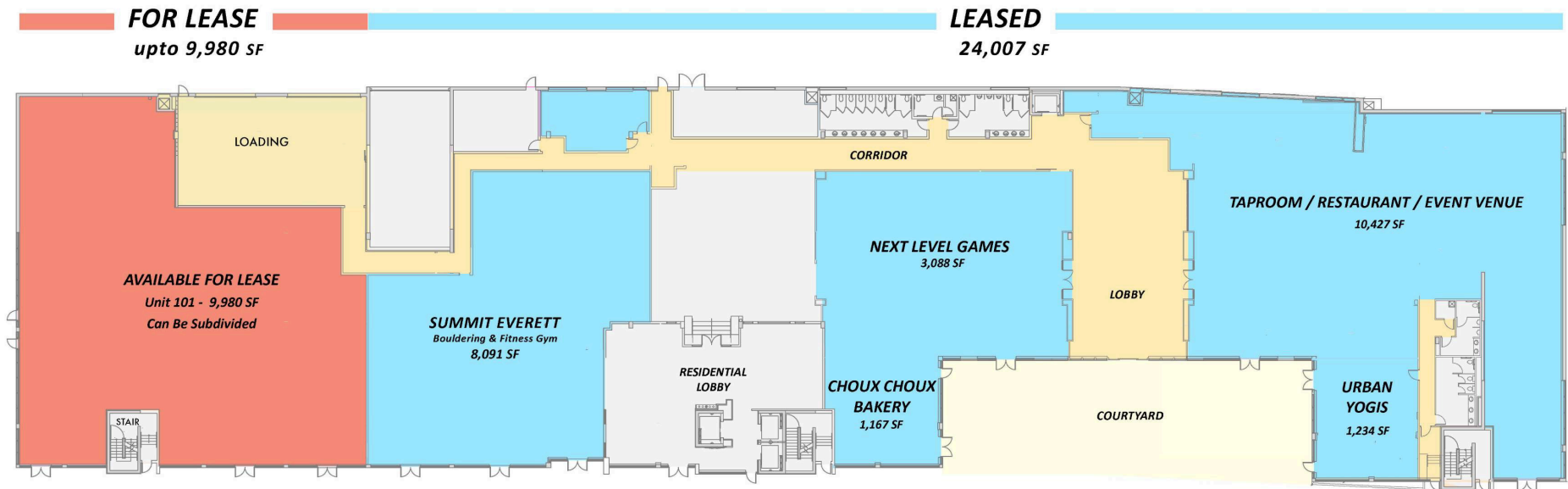
Immediately Adjacent Grade-Level and Dock High Loading Dock

Accessible vertical ventilation shaft

For Reference Only. Availability, area, dimensions, terms, conditions, and costs are subject to change at any time without notice.

Project Absorption

Join a collection of exceptional businesses



*for reference only

Location - Downtown Everett

2900 Grand Avenue - 47.9784349° N / 122.2132788° W





Disclaimer The information and materials herein, concerning 2900 Grand Avenue, Everett, WA ("Property"), are based, in part, upon information sourced from the lessor, and, in part, upon information obtained by Stuchell & Associates, LLC, dba, Eclipse Real Estate Group ("Eclipse") from sources deemed to be reliable. No warranty or representations, expressed or implied, are made by lessor, Eclipse, or any of their related entities as to the accuracy or completeness of the information contained herein. Prospective lessees should make their own investigations, projections, and conclusions. The Property is being offered for lease in "AS IS" condition, with all faults, and without any representations or warranties of any kind. Prospective lessees are expected to conduct their own independent due diligence regarding the Property. No representations or warranties, expressed or implied, are made as to the foregoing matters by lessor, Eclipse, or any of their officers, employees, affiliates, and/or agents.

Contact

Brian Stuchell

425.320.1242

bstuchell@eclipsegrp.net

Eclipse[®]
REAL ESTATE GROUP

eregrp.com