

FOR LEASE

Medical
Office



501 Dr. Martin Luther King Jr St S
St. Petersburg, FL 33705



VECTOR
COMMERCIAL REAL ESTATE



Montana Massa
386-295-2989
MMassa@VectorRealty.com

www.VectorRealty.com
125 5th Street South Suite 201
Saint Petersburg, Florida 33704
727-823-1230

Vector Commercial Real Estate Services, LLC is a Licensed Real Estate Brokerage. No warranties or representations, express or implied, are made as to the accuracy of the information contained herein, and same is submitted subject to omissions, change of price, rental or other conditions, withdrawal without notice, and to any other limitations imposed by our principals. No warranties or representations, express or implied, are made

EXECUTIVE SUMMARY

Prime first-floor medical office suite totaling approximately 4,589 RSF available for lease in Downtown St. Petersburg. Built out in 2021, the space features a private entrance, spacious reception and waiting area, multiple exam rooms, private physician and administrative offices, kitchen/break room, and dedicated restrooms. The efficient layout is well-suited for a variety of medical and healthcare users.

Ideally located less than one mile from Orlando Health Bayfront Hospital and Johns Hopkins All Children's Hospital, the property offers convenient access to major healthcare institutions, downtown amenities, and surrounding neighborhoods.

Ample on-site parking provides ease of access for both patients and staff.



LEASE RATE
\$34.00 PSF NNN



AVAILABLE
March 2027



LOCATION
501 Dr. MLK Jr St S
St. Petersburg, FL 33705



SIZE
4,589 SF



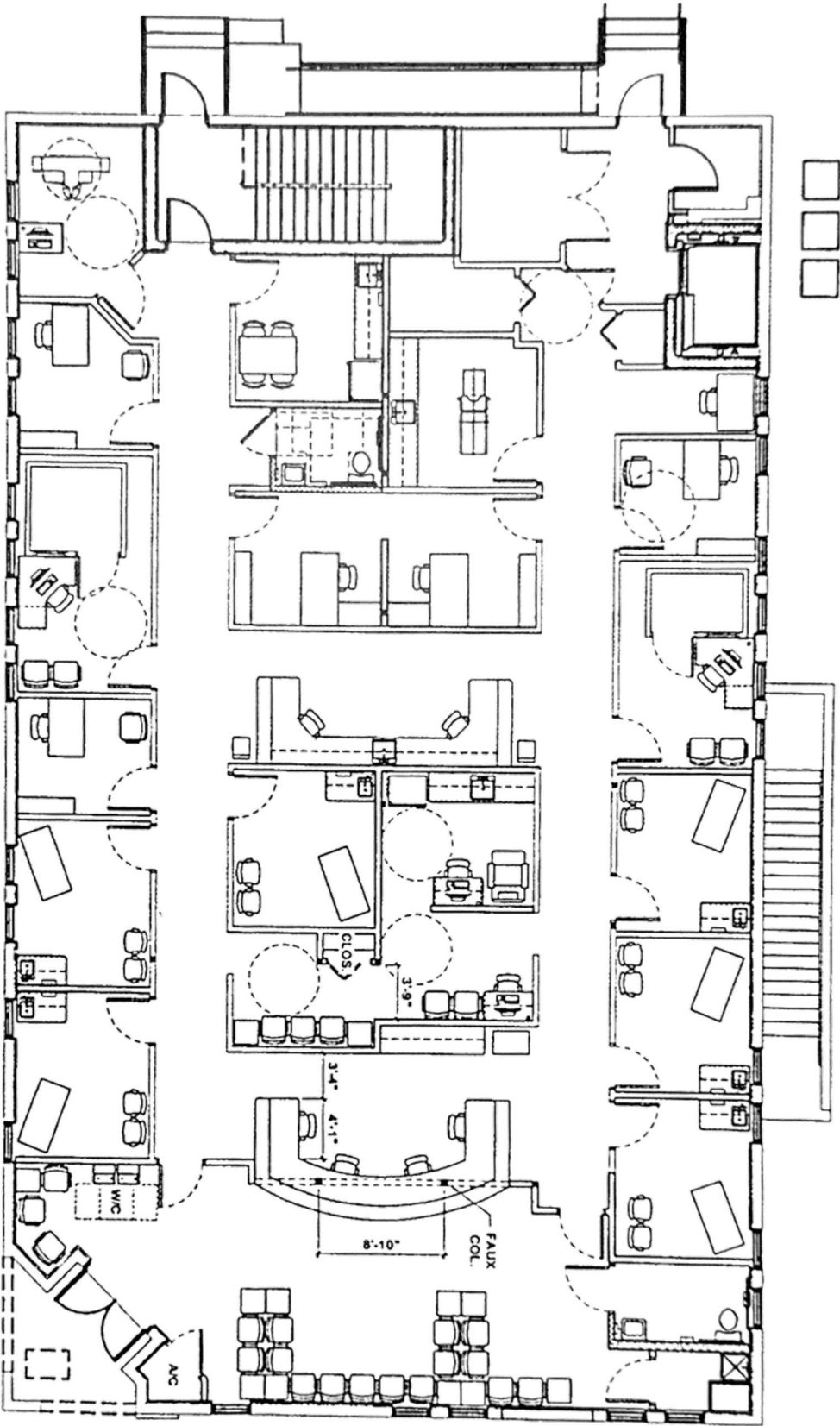
PARKING
36 Surface
Parking Spaces &
Adjacent Street
Parking



USE
Medical



Floor Plan





Demographics

	1 Mile	5 Mile	10 Mile
2025 Population	21,591	231,591	444,864
2025 Households	11,542	105,743	208,196
Avg Household Income	\$94,892	\$98,119	\$98,468







