

2426 EAST UNIVERSITY DRIVE – AUBURN, AL



SQUARE FEET:
+/- 1,400

ZONING:
Commercial

TRAFFIC COUNTS:
26,200 – AADT

ADDRESS: 2426 East University Drive Suite 2201. Auburn, AL 36830

Location:
Just off the corner of East University Drive and N Dean Road.

Summary:
Open office space, studio, or retail space in rapidly growing NW Auburn.



Office Address
2680 Corporate Park Dr.
Opelika, AL, 36831
www.comcre.com

Craig Melton
Broker
334-559-4914 Mobile
comprehensivecre@gmail.com

OVERVIEW

Incredible opportunity to lease space in rapidly growing Auburn. Currently Six people a day are moving to Opelika/Auburn. Formerly used as a photography office and studio

PROPERTY HIGHLIGHTS

2nd Floor Space with Great Visibility

PROPERTY SUMMARY

Asking Rent: \$27

Year Built: 2008

Lot Size: 1.1 acres

Total SF: 1,400 SF for Lease

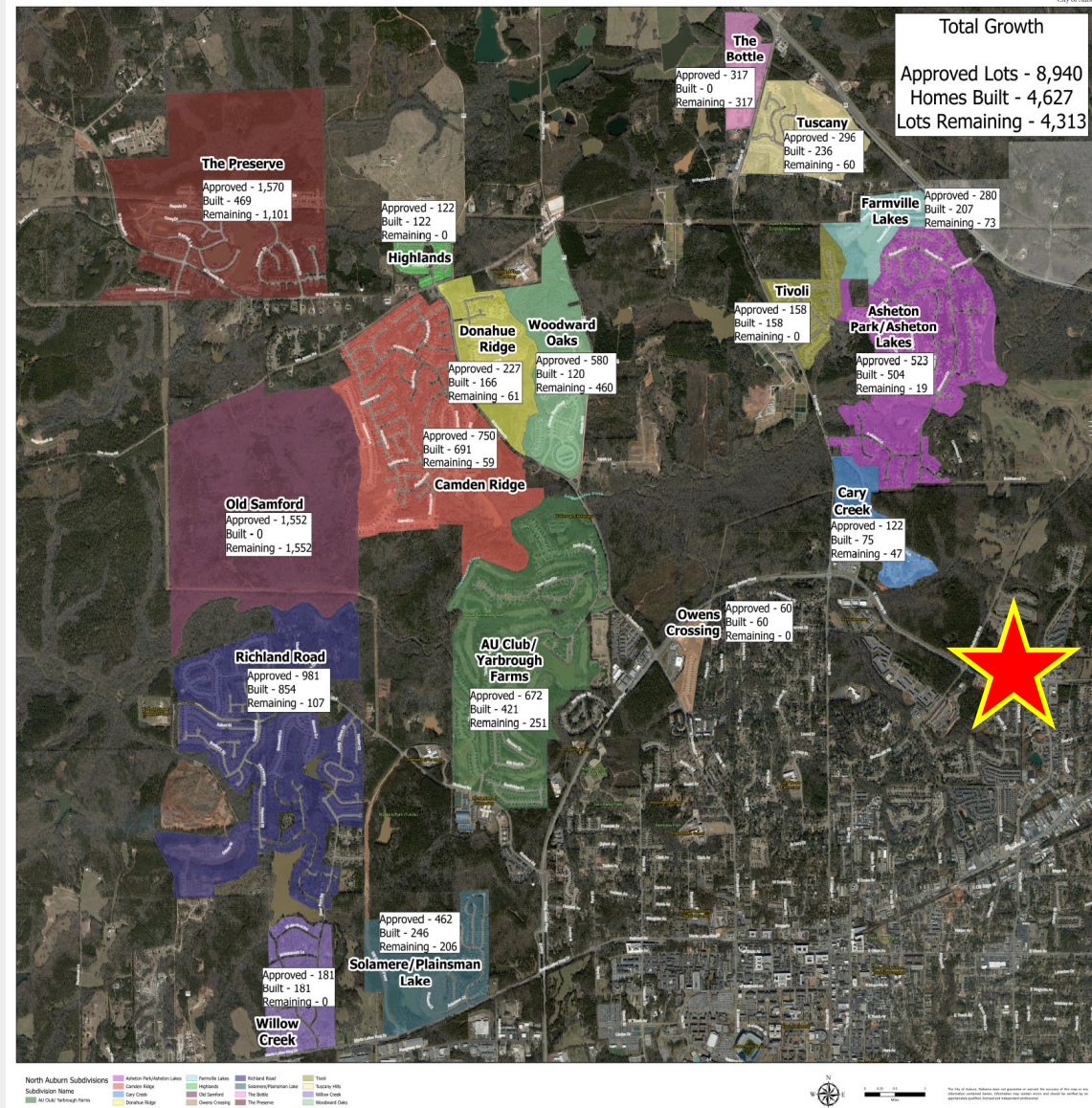
LOCATION HIGHLIGHTS

Convenient to all of Lee County

Close to Auburn Mall

Close proximity rapid residential growth

North Auburn Residential Growth



Office Address
 2680 Corporate Park Dr.
 Opelika, AL, 36831
www.comcre.com

Craig Melton
 Broker
 334-559-4914 Mobile
comprehensivecre@gmail.com

AERIAL MAP

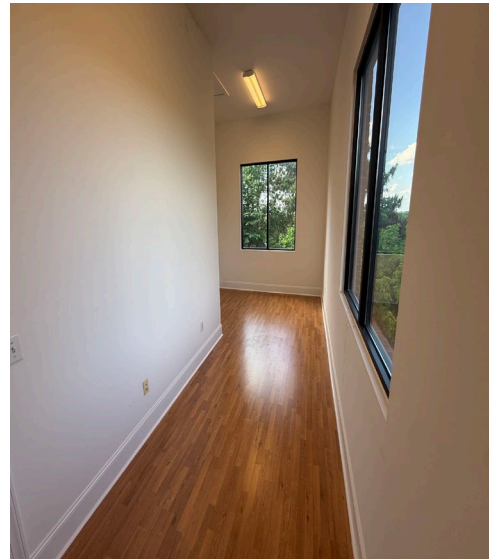
AUBURN-OPELIKA RETAIL TRADE AREA



Office Address
 2680 Corporate Park Dr.
 Opelika, AL, 36831
www.comcre.com

Craig Melton
 Broker
 334-559-4914 Mobile
comprehensivecre@gmail.com

PHOTOS



Office Address
2680 Corporate Park Dr.
Opelika, AL, 36831
www.comcre.com

Craig Melton
Broker
334-559-4914 Mobile
comprehensivecre@gmail.com

FLOOR PLAN

