

INFILL INDUSTRIAL SITE FOR SALE OR LEASE

Short-Term Leasing Available!



Signage Visible from I-25

4751 N Broadway
Denver, CO 80216

Sales Price | \$9,500,000
Lease Rate | \$8 - \$14/SF NNN
Available Space | 3,858 SF to 90,480 SF



LEAD BROKER **CJ Toohy** Broker Associate | cj@henrygroupre.com | 925.872.9242
Boston Weir Principal | Boston@henrygroupre.com | 303.327.9753
Patrick Henry Principal | Pat@henrygroupre.com | 303.625.7444

OFFERING SUMMARY

This 90,480 SF industrial property, constructed in 1943 and zoned I-MX-3, is strategically located in the Central Denver area. Its flexible layout and robust infrastructure make it an ideal choice for industrial, warehouse, and distribution use. The property's substantial size and versatile zoning also offer significant potential for redevelopment, making it an attractive opportunity for investors looking to capitalize on a valuable asset in the industrial market. With its strategic location and potential for diverse industrial and commercial uses, this property presents a compelling investment opportunity for those seeking a foothold in the thriving industrial sector.

LOCATION

Conveniently situated in the heart of Central Denver's industrial zone, the location offers easy access to key amenities and transportation hubs. Just minutes away from Interstates 25 and 70, the area provides seamless access to regional and national distribution networks. Nearby, the National Western Stock Show complex and the RiNo Arts District contribute to the neighborhood's dynamic energy, enhancing its appeal for industrial and warehouse investors.

PROPERTY HIGHLIGHTS

- **Rare 4.7-Acre Urban Infill Site** - Centrally located with immediate access to I-70, I-25, and major transit corridors - just minutes from downtown Denver and key industrial submarkets.
- **Functional Layout with Expansion Potential** - Configurable interior with high ceilings and open floor space, suitable for single or multi-tenant occupancy with possible outdoor storage or yard use.
- **Adaptive Re-Use Opportunity** - Former manufacturing facility well-suited for conversion to office, flex, retail, or special-purpose use. Ideal for users seeking a functional industrial footprint with potential for creative redevelopment.
- **Flexible I-MX-3 Zoning (City & County of Denver)** - Highly adaptable zoning designation allowing a mix of industrial, commercial, and residential uses—offering a rare opportunity for diverse end-user or investor strategies.

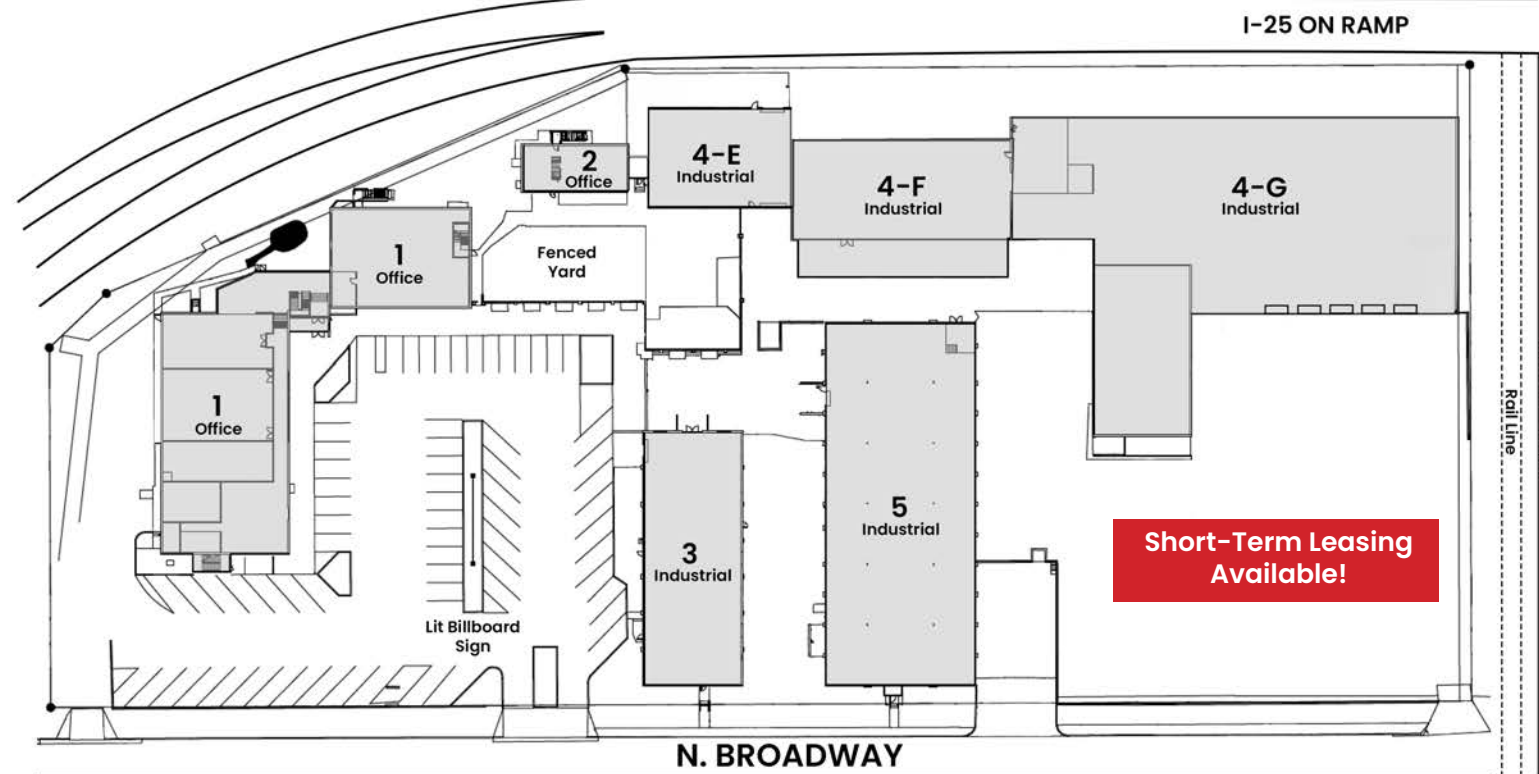


Sales Price	\$9,500,000
Lease Rate	\$8- \$14/SF NNN
Property Address	4751 N Broadway, Denver, CO 80216
Lot Size	4.7 Acres 204,738 SF
Number of Buildings	Seven (7)
Total Building Size	90,480 SF (All Buildings)
Year Built	1943
Zoning	I-MX-3
Property Taxes (2025)	\$182,862.52
Property Type	Industrial (Office/Warehouse)
Clear Height	10' - 30'
Loading	Drive-In & Dock-High (Multiple)
Parking	+/- 157 (To be verified)

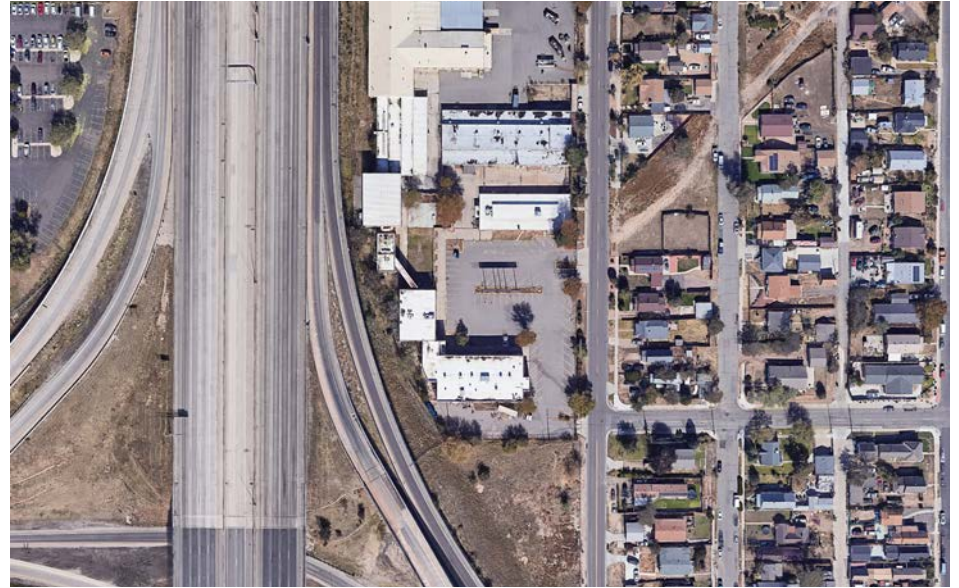
◀ To CBD

I-25

▶ N



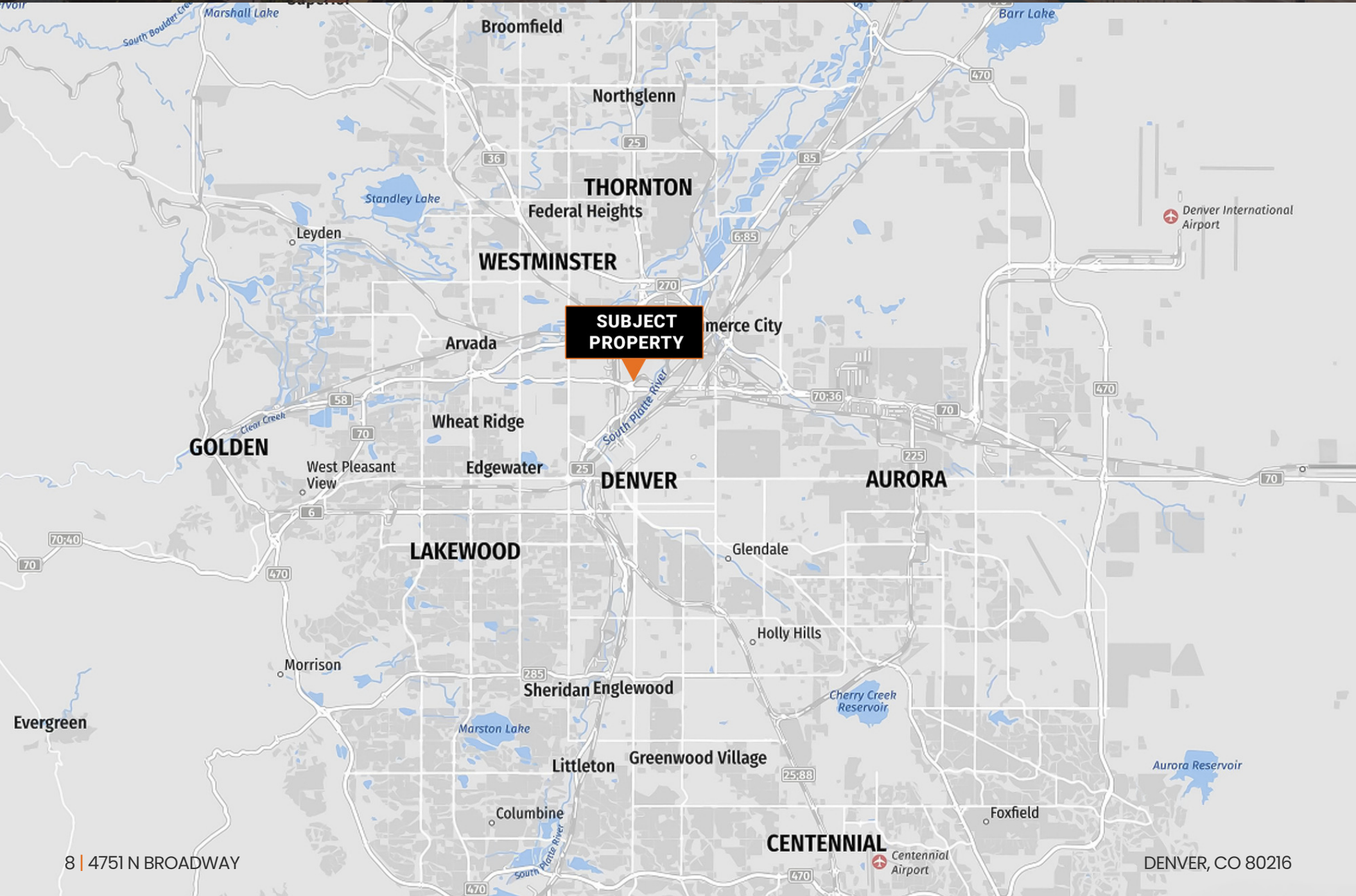
BUILDING	USE	SQUARE FEET	CLEAR HEIGHT	LOADING	SPRINKLERED	LEASE RATE	NNN'S (EST.)
1	Office/Flex	28,690	8'4" - 10'7"	1 Mini Dock (20")	Partially	\$8.00/NNN	\$5.50
2	Office/Flex	3,858	15'	N/A	Yes	\$8.00/NNN	\$5.50
3	Industrial	6,250	15'	1 Drive-in	Yes	\$12.00/SF/NNN	\$5.50
4-E	Industrial	5,842	30'	1 Drive-In	Yes	\$14.00/SF/NNN	\$5.50
4-F	Industrial	7,444	13'10"	1 Drive-In 1 Dock High	Yes	\$10.00/SF/NNN	\$5.50
4-G	Industrial	4,000 - 23,135	17'	1 Drive-In 6 Dock High	Yes	\$8.00/SF/NNN	\$5.50
5	Industrial	15,261	10'-19'4"	1 Drive-In	Yes	\$12.00/SF/NNN	\$5.50
Property	Ind/Flex/Office	90,480	Various	Various	Yes	Contact Broker	-----











**SUBJECT
PROPERTY**



GLOBEVILLE NEIGHBORHOOD

 **NATIONAL WESTERN CENTER**

SUBJECT PROPERTY

W 48TH AV
INTERSTATE 70

SUNNYSIDE NEIGHBORHOOD

FoxPark **FOX PARK DEVELOPMENT**



HIGHLAND NEIGHBORHOOD

INTERSTATE 25

RINO DISTRICT

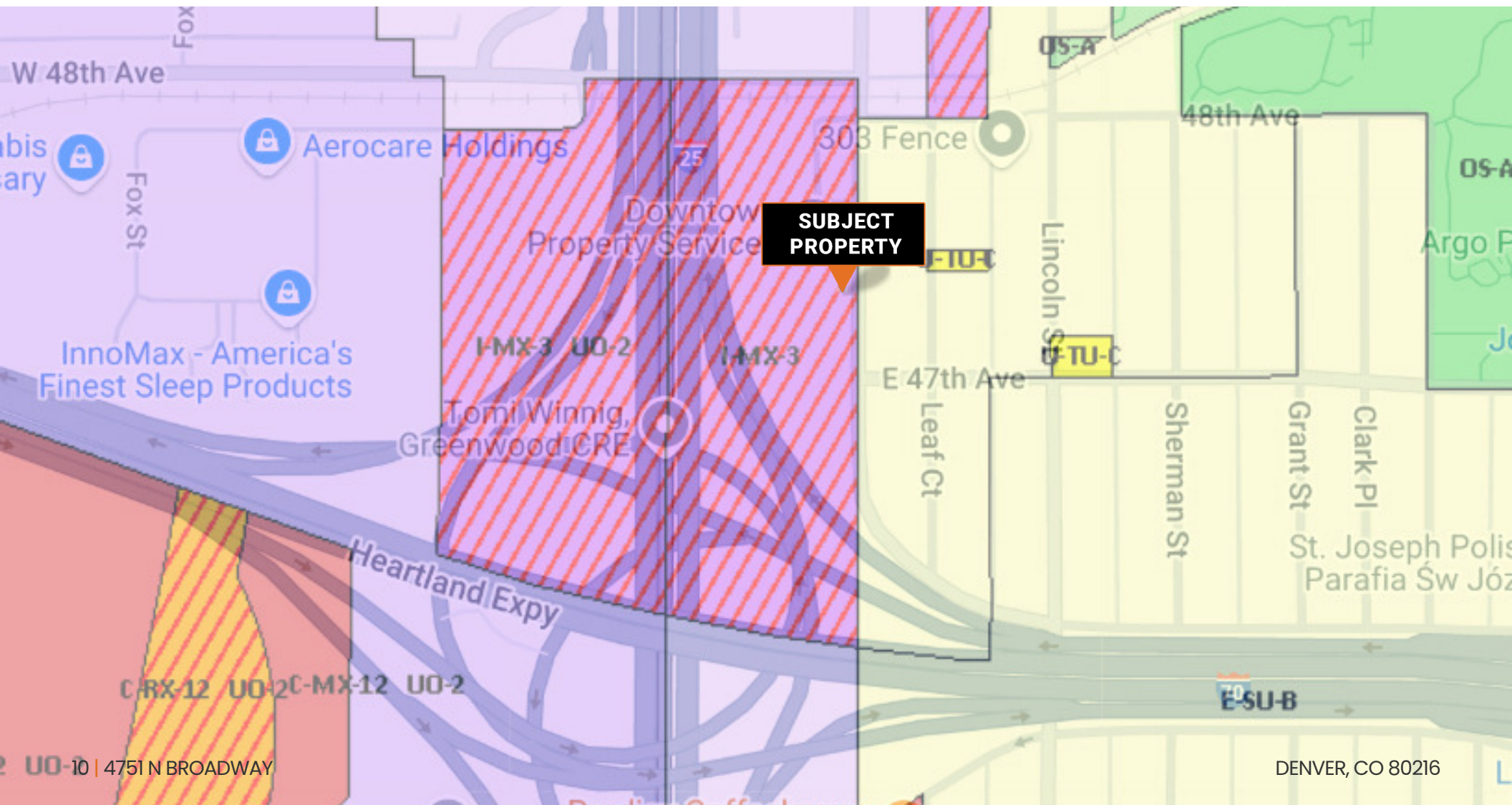
 **COORS FIELD**

 **UNION STATION**

CENTRAL BUSINESS DISTRICT

I-MX-3 ZONING

[CLICK HERE](#)
[DENVER USE CODE](#)



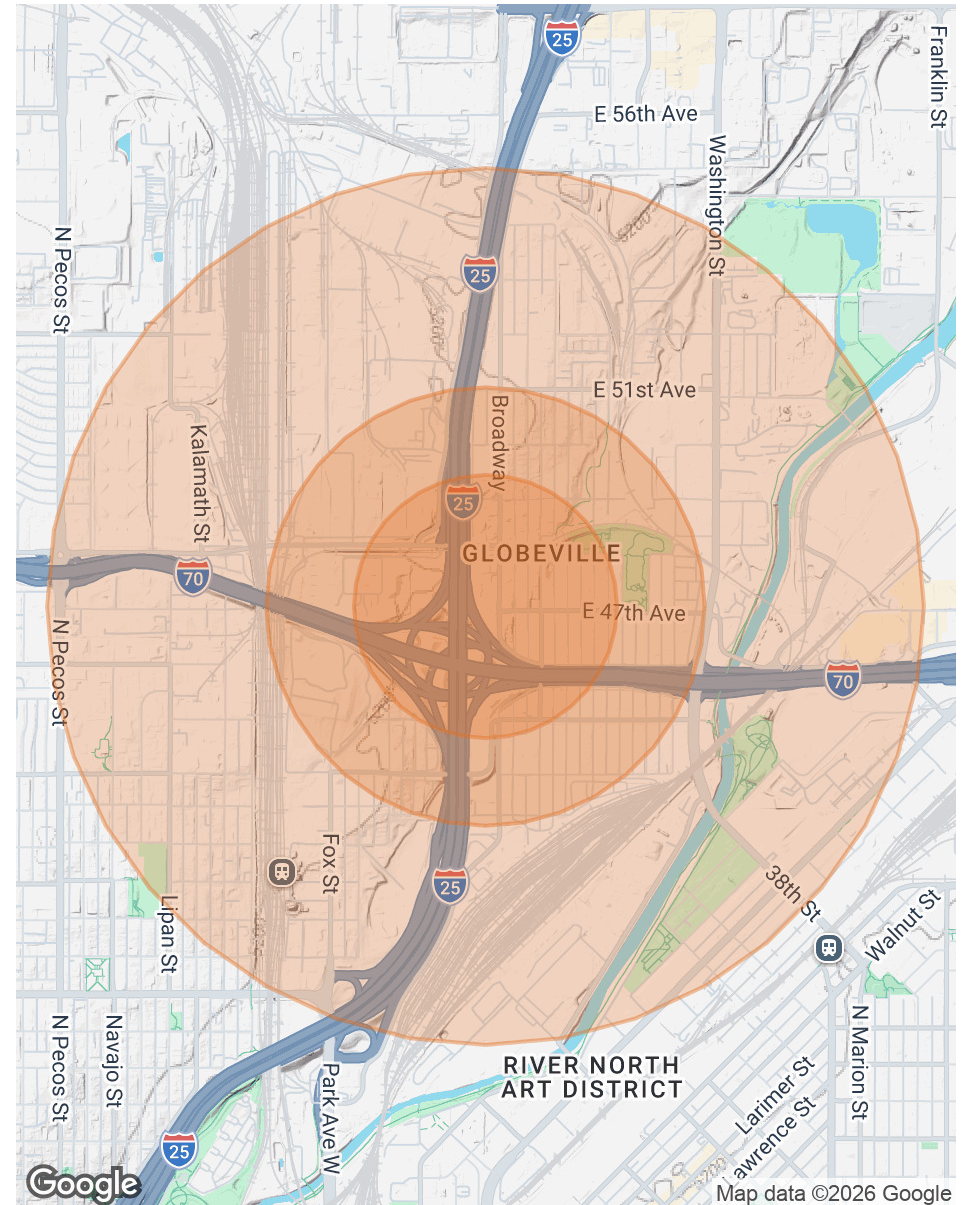
POPULATION

	0.3 MILES	0.5 MILES	1 MILE
Total Population	827	2,266	6,777
Average Age	38	36	34
Average Age (Male)	38	36	34
Average Age (Female)	39	36	35

HOUSEHOLDS & INCOME

	0.3 MILES	0.5 MILES	1 MILE
Total Households	297	719	2,369
# of Persons per HH	2.8	3.2	2.9
Average HH Income	\$120,743	\$108,160	\$102,506
Average House Value	\$494,749	\$567,849	\$633,667

* Demographic data derived from 2020 ACS - US Census



CONFIDENTIALITY & DISCLAIMER

All materials and information received or derived from Henry Group LLC d/b/a, Henry Group Real Estate its directors, officers, agents, advisors, affiliates and/or any third party sources are provided without representation or warranty as to completeness, veracity, or accuracy, condition of the property, compliance or lack of compliance with applicable governmental requirements, developability or suitability, financial performance of the property, projected financial performance of the property for any party's intended use or any and all other matters.

Neither Henry Group LLC d/b/a, Henry Group Real Estate, its directors, officers, agents, advisors, or affiliates makes any representation or warranty, express or implied, as to accuracy or completeness of any materials or information provided, derived, or received. Materials and information from any source, whether written or verbal, that may be furnished for review are not a substitute for a party's active conduct of its own due diligence to determine these and other matters of significance to such party. Henry Group LLC d/b/a, Henry Group Real Estate will not investigate or verify any such matters or conduct due diligence for a party unless otherwise agreed in writing.

EACH PARTY SHALL CONDUCT ITS OWN INDEPENDENT INVESTIGATION AND DUE DILIGENCE.

Any party contemplating or under contract or in escrow for a transaction is urged to verify all information and to conduct their own inspections and investigations including through appropriate third party independent professionals selected by such party. All financial data should be verified by the party including by obtaining and reading applicable documents and reports and consulting appropriate independent professionals. Henry Group LLC d/b/a, Henry Group Real Estate makes no warranties and/or representations regarding the veracity, completeness, or relevance of any financial data or assumptions. Henry Group LLC d/b/a, Henry Group Real Estate does not serve as a financial advisor to any party regarding any proposed transaction. All data and assumptions regarding financial performance, including that used for financial modeling purposes, may differ from actual data or performance. Any estimates of market rents and/or projected rents that may be provided to a party do not necessarily mean that rents can be established at or increased to that level. Parties must evaluate any applicable contractual and governmental limitations as well as market conditions, vacancy factors and other issues in order to determine rents from or for the property.

Legal questions should be discussed by the party with an attorney. Tax questions should be discussed by the party with a certified public accountant or tax attorney. Title questions should be discussed by the party with a title officer or attorney. Questions regarding the condition of the property and whether the property complies with applicable governmental requirements should be discussed by the party with appropriate engineers, architects, contractors, other consultants and governmental agencies. All properties and services are marketed by Henry Group LLC d/b/a, Henry Group Real Estate in compliance with all applicable fair housing and equal opportunity laws.



HENRY GROUP
REAL ESTATE

495 S Pearl Street, Denver, CO 80209 | 303.625.7444 | www.henrygroupre.com