

# FOR LEASE

± 4,338 SF  
OFFICE/WAREHOUSE

**BETHEL INDUSTRIAL PARK**  
201 Production Drive, Suite D  
Yorktown, VA 23693



## PROPERTY SUMMARY

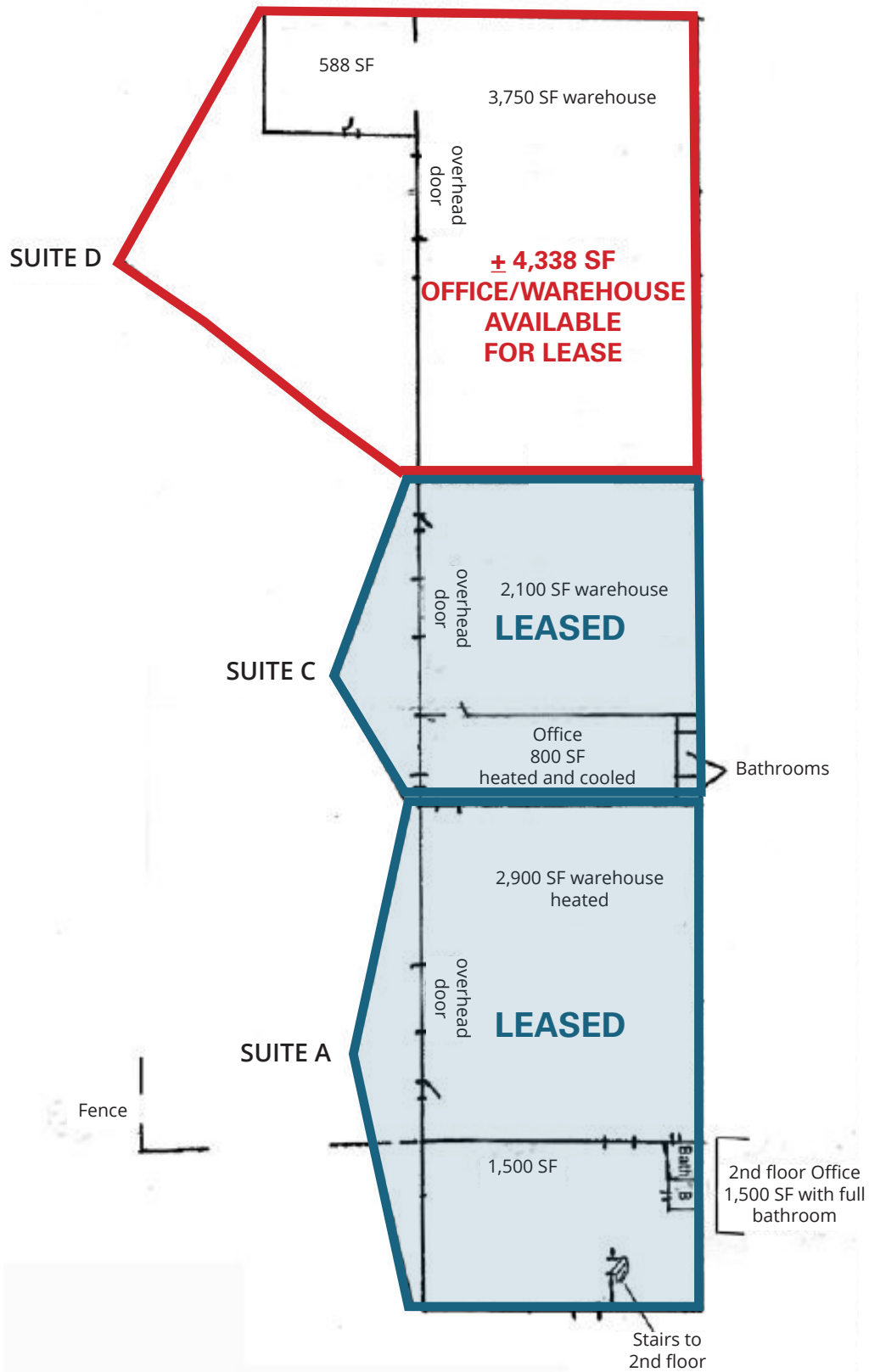
- Suite D Size: ± 4,338 SF
- Land Size: ± 0.86 AC
- Attractive brick and block exterior
- Zoning: I-L (Limited Industrial)
- Clear ceiling height : 14 ft
- Fenced Loading Area
- 3 overhead 12'x12' grade level doors
- 3 phase electric power available
- Ample Parking
- Rental Rate: \$9.75 PSF, NNN



For more information:  
PETER D. ABRAHAM, CCIM  
757.640.8226  
[PeterAbraham@HarveyLindsay.com](mailto:PeterAbraham@HarveyLindsay.com)

999 Waterside Drive • Suite 1400  
Norfolk, Virginia 23510  
757-640-8700  
[www.HarveyLindsay.com](http://www.HarveyLindsay.com)

**HARVEY LINDSAY**  
COMMERCIAL REAL ESTATE



For more information:  
PETER D. ABRAHAM, CCIM  
757.640.8226  
PeterAbraham@HarveyLindsay.com

999 Waterside Drive • Suite 1400  
Norfolk, Virginia 23510  
757-640-8700  
[www.HarveyLindsay.com](http://www.HarveyLindsay.com)

**HARVEY LINDSAY**  
COMMERCIAL REAL ESTATE



AERIAL

201 Production Drive, Yorktown, VA 23693



Subject Property:  
201 Production Drive



Victory Blvd

George Washington Memorial Hwy

For more information:  
PETER D. ABRAHAM, CCIM  
757.640.8226  
PeterAbraham@HarveyLindsay.com

999 Waterside Drive • Suite 1400  
Norfolk, Virginia 23510  
757-640-8700  
[www.HarveyLindsay.com](http://www.HarveyLindsay.com)

**HARVEY LINDSAY**  
COMMERCIAL REAL ESTATE