

# CABRILLO

## BUSINESS PARK

5450 - 5490 COMPLEX STREET | SAN DIEGO, CA 92123

AVAILABLE FOR LEASE  
MULTI-TENANT INDUSTRIAL / FLEX SUITES

H.G. FENTON COMPANY

**CBRE**  
CUSHMAN &  
WAKEFIELD

## PROJECT HIGHLIGHTS

- + Approximately 109,661 SF (6) building multi-tenant flex / industrial park
- + High image office / industrial suites with flexible suite options
- + Approximately 14' clear height
- + 2.46/1,000 SF parking ratio
- + Spectrum Fiber available
- + Sprinklers
- + EV charging stations
- + Immediate access to Clairemont Mesa Blvd, Highways 52 & 163, and Interstates 805 and 15



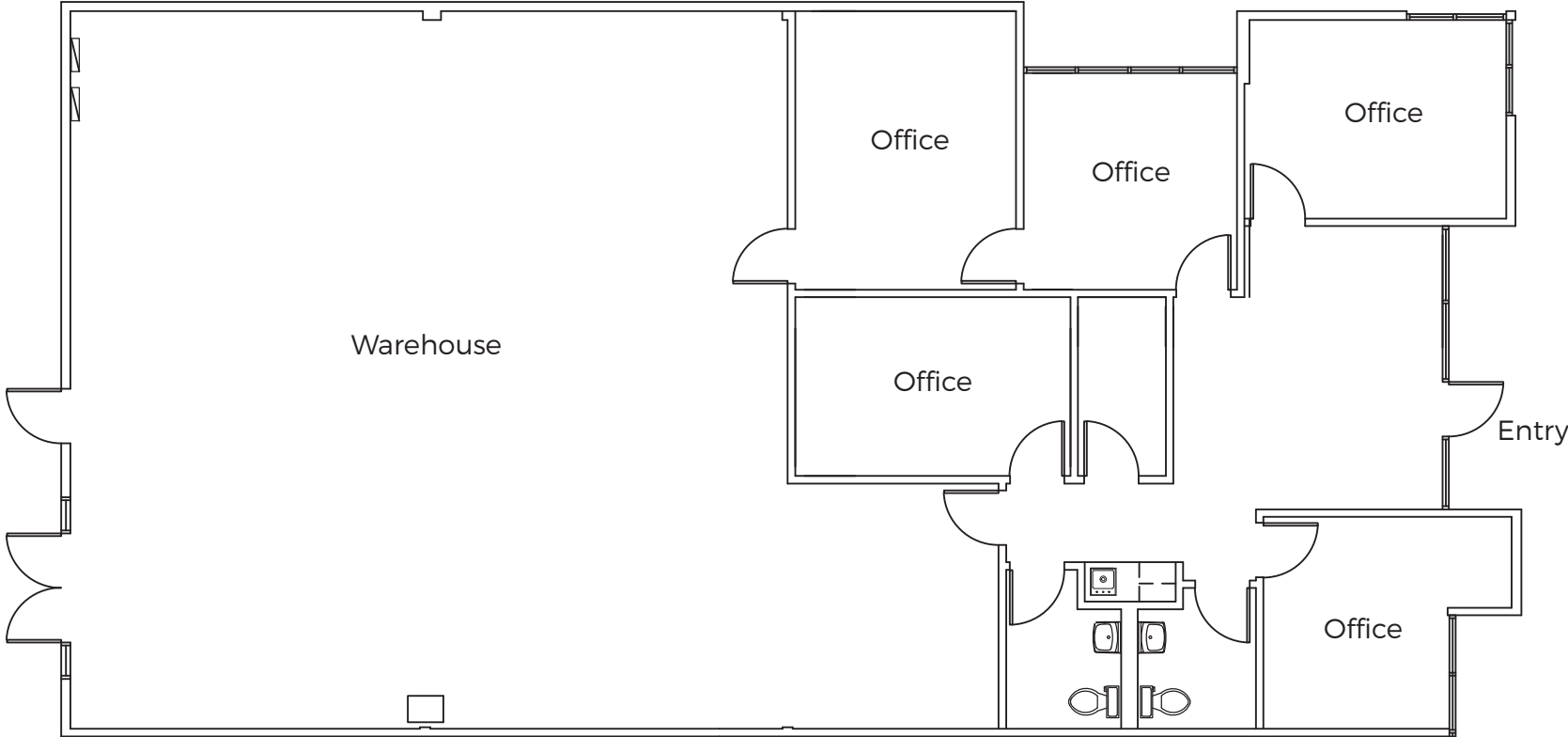
# AVAILABILITY



ADDRESS	SF	AVAILABILITY	RATE	BUILD OUT
5466 Complex St, Suite 208	±3,197 SF	July 1, 2026	\$1.85 NNN	Corner suite with street frontage. Approximately 45% office / 55% warehouse with potential for (1) grade level loading door. Heavy power capabilities (to be verified by Tenant).
5482 Complex St, Suite 107	±2,339 SF	Immediately	\$1.85 NNN	Street frontage suite. Approximately 30% office / 70% warehouse with (1) grade level loading door.
5482 Complex St, Suite 115	±803 SF	August 1, 2026	\$1.85 NNN	Corner suite. 100% office with open office area, kitchenette, and (2) private offices.

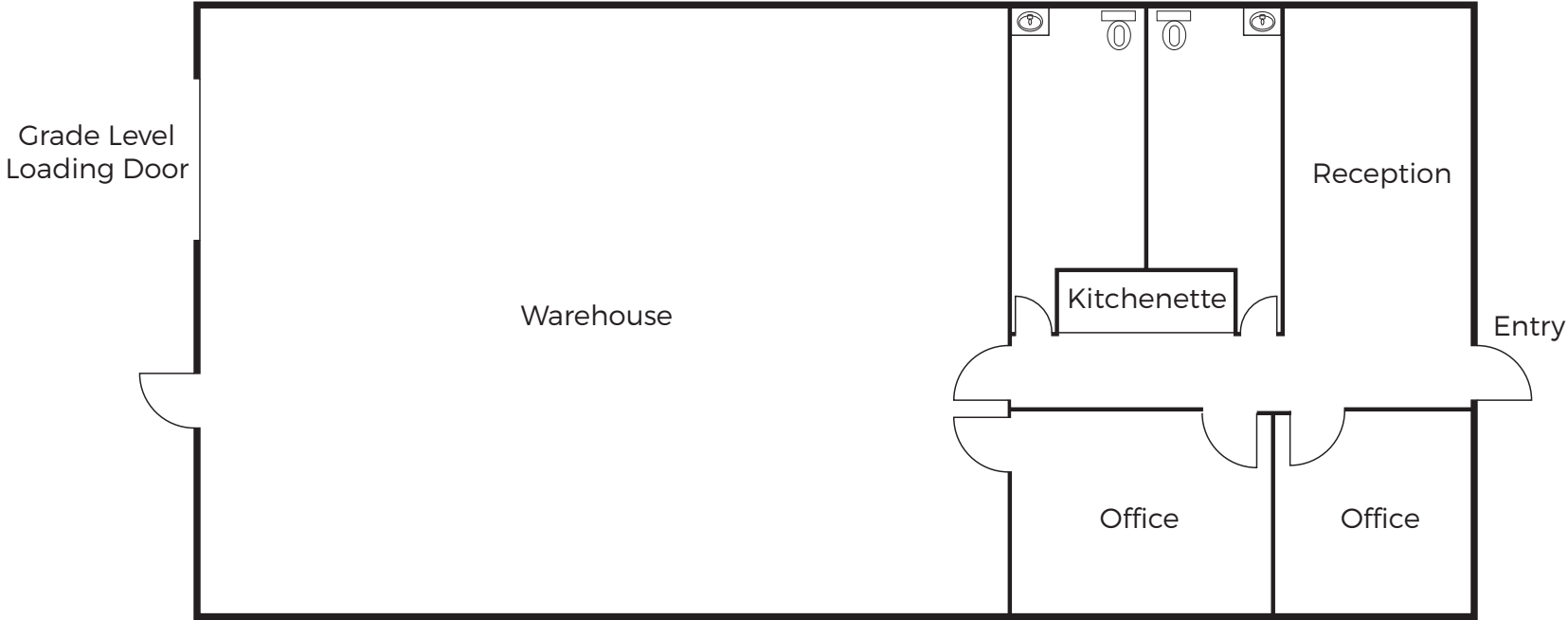
# FLOOR PLAN

5466 Complex Street  
Suite 208  
±3,197 SF



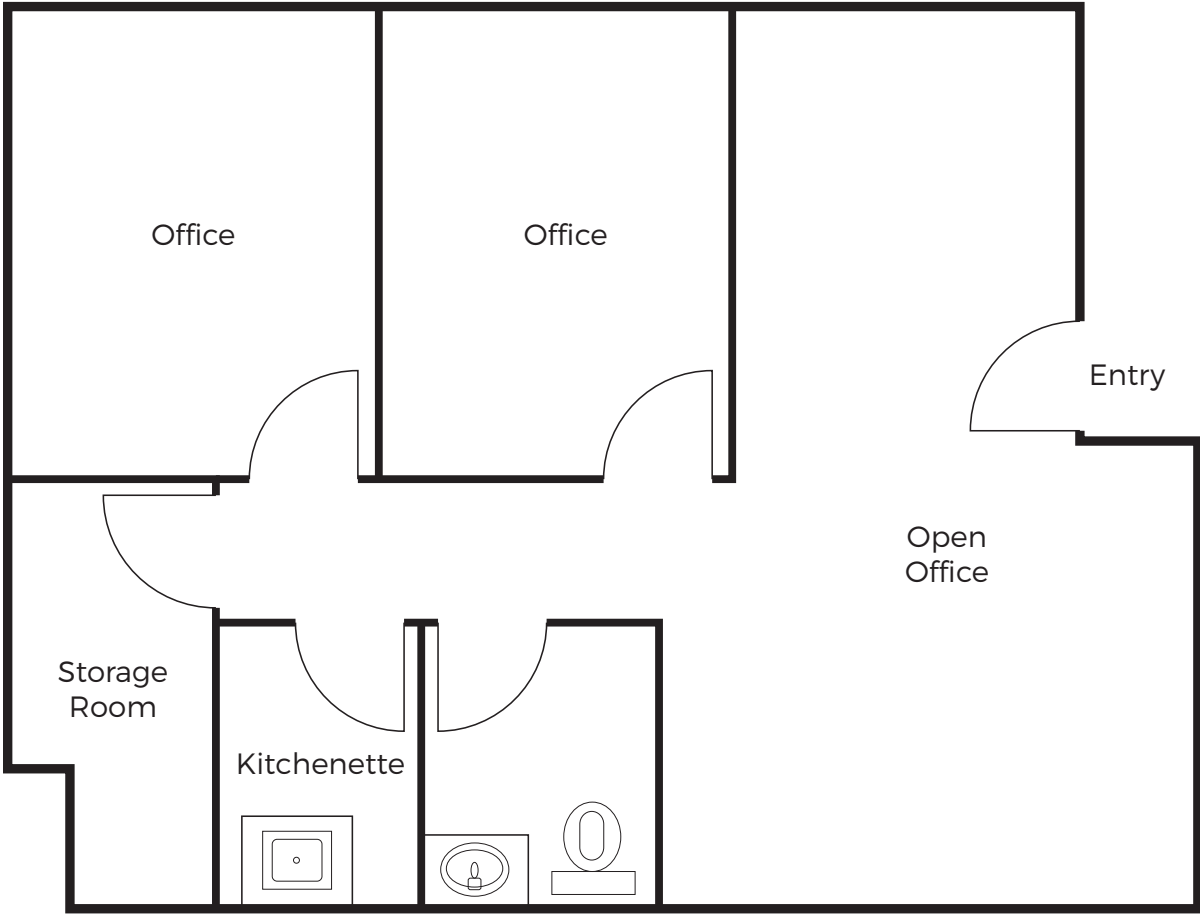
# FLOOR PLAN

5482 Complex Street  
Suite 107  
±2,339 SF



# FLOOR PLAN

5482 Complex Street  
Suite 115  
±803 SF



# FOR MORE INFORMATION:

## KYLE WRIGHT

Senior Associate

Lic. 02083245

+1 858 546 4621

[kyle.wright2@cbre.com](mailto:kyle.wright2@cbre.com)

## RYAN DOWNING, SIOR

Director

Lic. 01955032

+1 858 546 5416

[ryan.downing@cushwake.com](mailto:ryan.downing@cushwake.com)



© 2025 CBRE, Inc. All rights reserved. This information has been obtained from sources believed reliable, but has not been verified for accuracy or completeness. Any projections, opinions, or estimates are subject to uncertainty. The information may not represent the current or future performance of the property. You and your advisors should conduct a careful, independent investigation of the property and verify all information. Any reliance on this information is solely at your own risk. Photos herein are the property of their respective owners and use of these images without the express written consent of the owner is prohibited.