



# 5 CITY BLVD

NASHVILLE

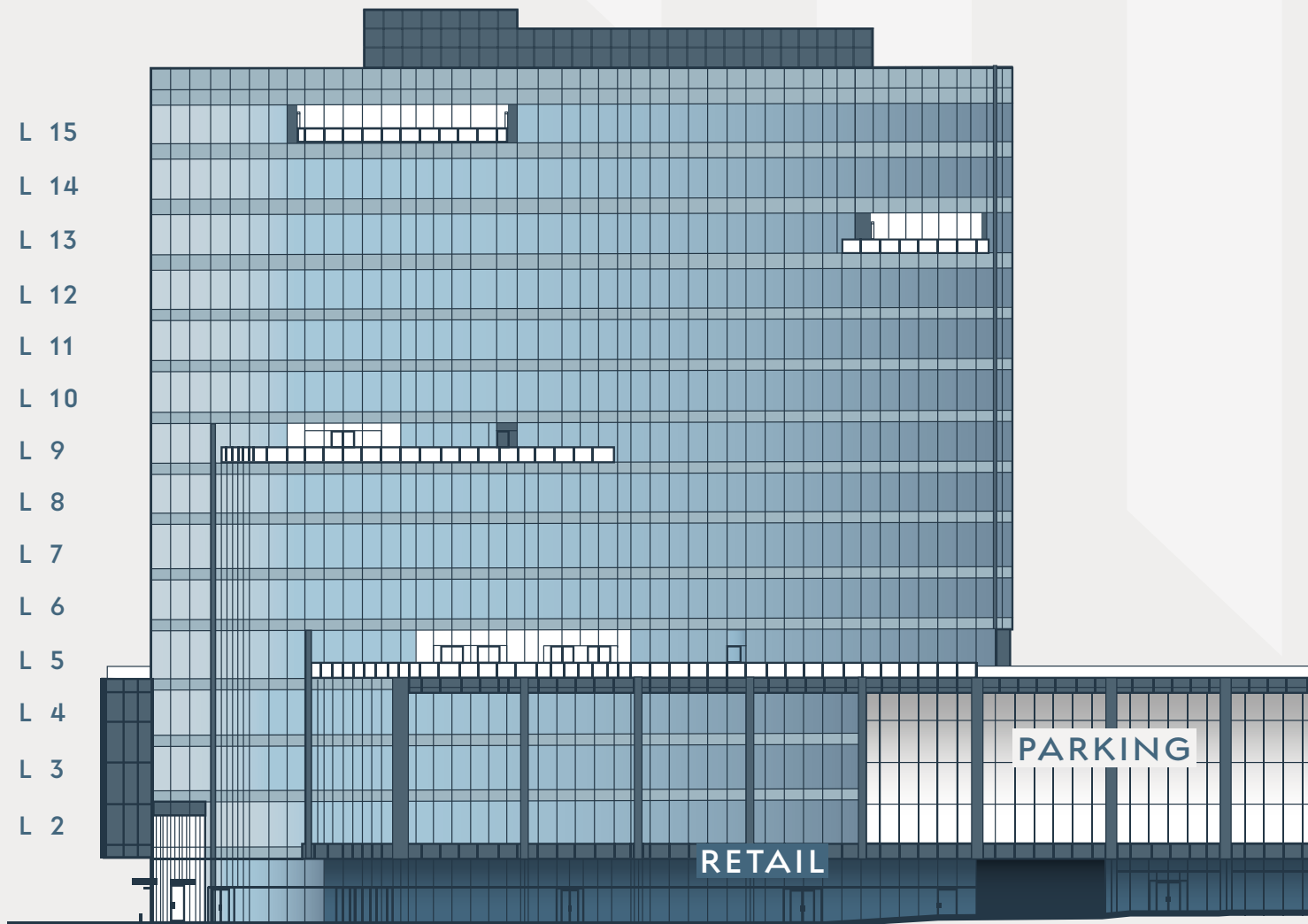


WORKSPACE RENEWED

# DETAILS

# 5 CITY BLVD

NASHVILLE



## SIZE

- **Rentable Office:** 344,000 RSF
- **Rentable Retail:** 17,000 RSF
- **Height:** 15 Stories; 239'

## FLOOR HEIGHTS

- **Typical Drop Ceiling:** 10'
- **Typical Floor-to-Floor:**  
13'- 6" to 14'- 8"
- **L15 Floor-to-Floor:** 15'-6"

## OFFICE SPACE

- **Typical Office Floor Plate:**  
27,000 – 31,000 RSF
- **Typical Column Bay Spacing:** 30' x 45'
- **Creative Office:** 16,000-17,000 RSF (L2 - L4)
- **Spec Suite Office:** 9 Suites from  
2,300 – 4,500 RSF (L6)

## ELEVATORS

- **High-Speed Passenger:** 5
- **Dedicated Freight:** 1
- **Parking Garage:** 3

## PARKING

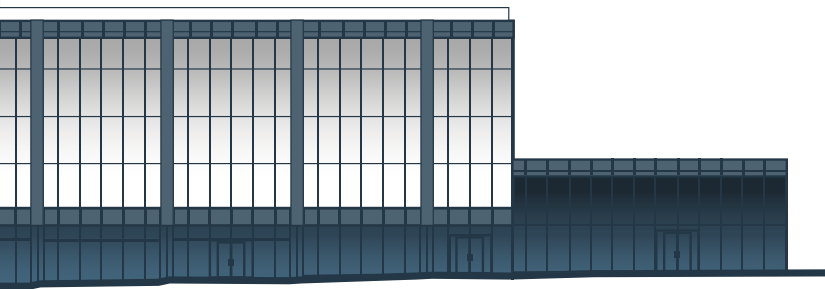
- **Levels:** 1 Below Grade; 5 Above Grade
- **Ratio:** Approximately 3.0 Stalls/1,000 RSF
- **Total:** 900+ Stalls

## TERRACES

- **L5:** 3,600 RSF - Shared
- **L9:** 1,900 RSF - Private
- **L13:** 700 RSF - Private
- **L15:** 960 RSF - Private

## AMENITIES

- Bike Room
- EV Parking Stations
- Security & Concierge Services
- Catering Kitchen
- Study Lounge
- Flex Conference Center (up to 80 seats)
- Terrace Lounge
- Grab & Go Cafe
- Outdoor Terrace
- Arrival Lounge
- Communal Gathering Spaces
- Private Work Spaces
- State-of-the-Art Fitness Facilities with Spa-Inspired Private Showers & Locker Suite



# SPEC SUITE FLOOR PLAN

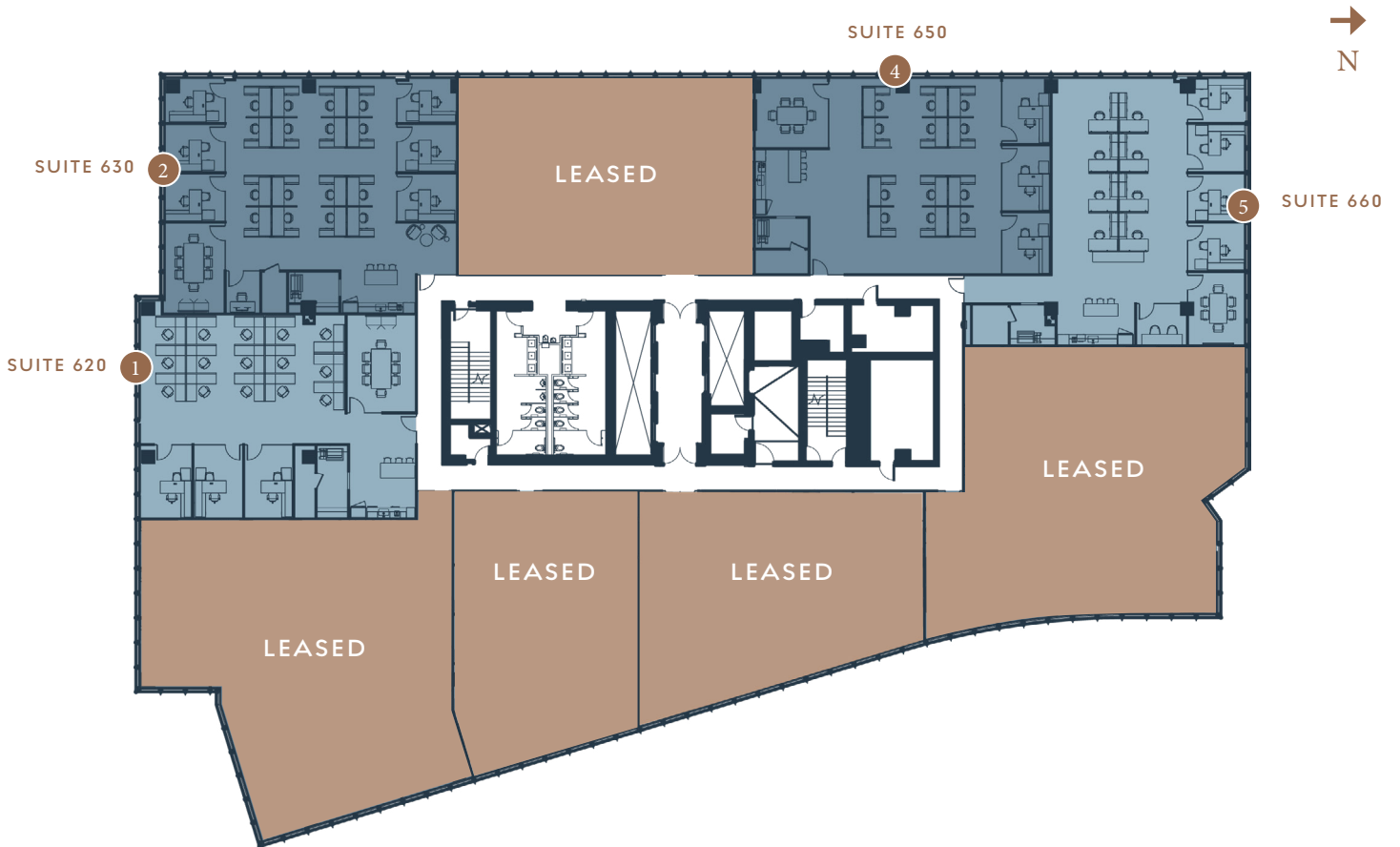
 Click for virtual tours

1 SUITE 620 3,063 RSF 

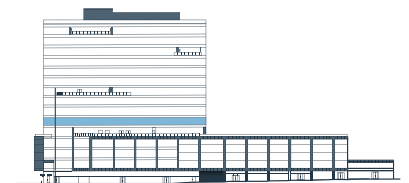
4 SUITE 650 3,174 RSF 

2 SUITE 630 3,738 RSF 

5 SUITE 660 3,201 RSF 



L6





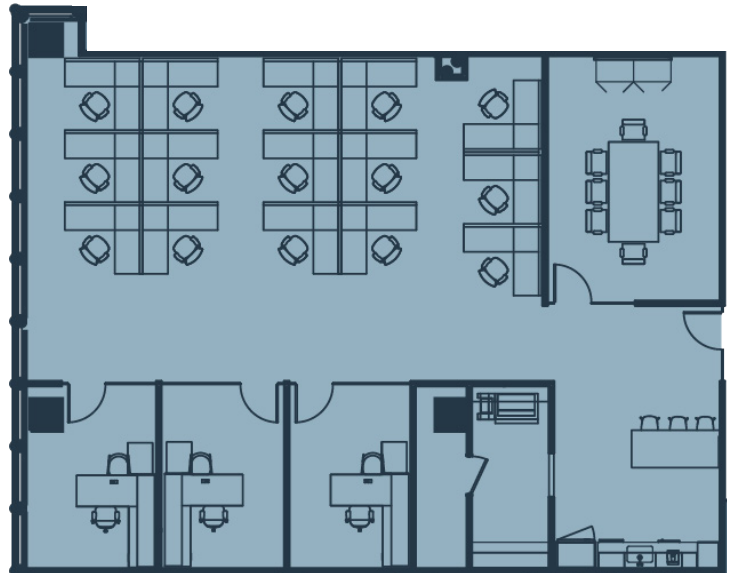
SPEC SUITE

# SUITE 620

3,063 RSF



Click for virtual tours

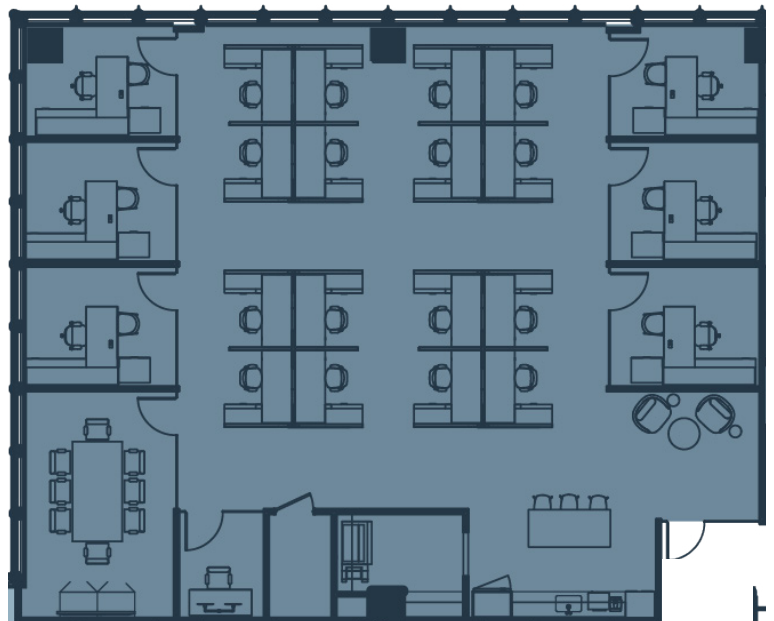


# SUITE 630

3,738 RSF



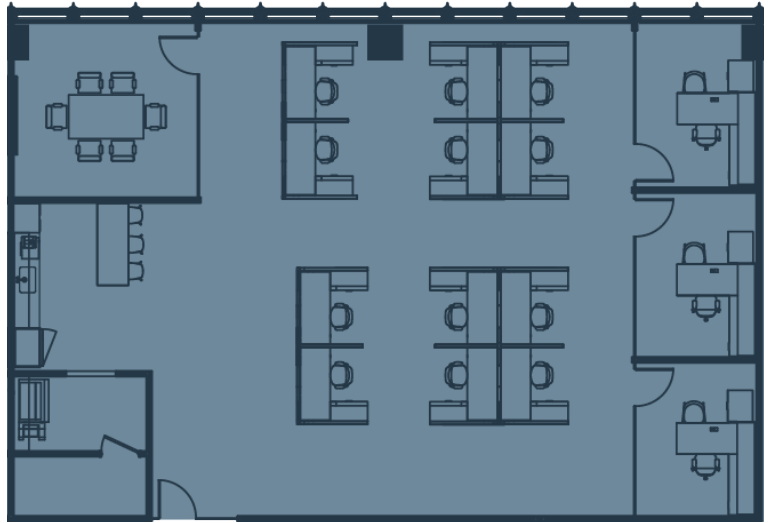
Click for virtual tours



# SUITE 650

3,174 RSF

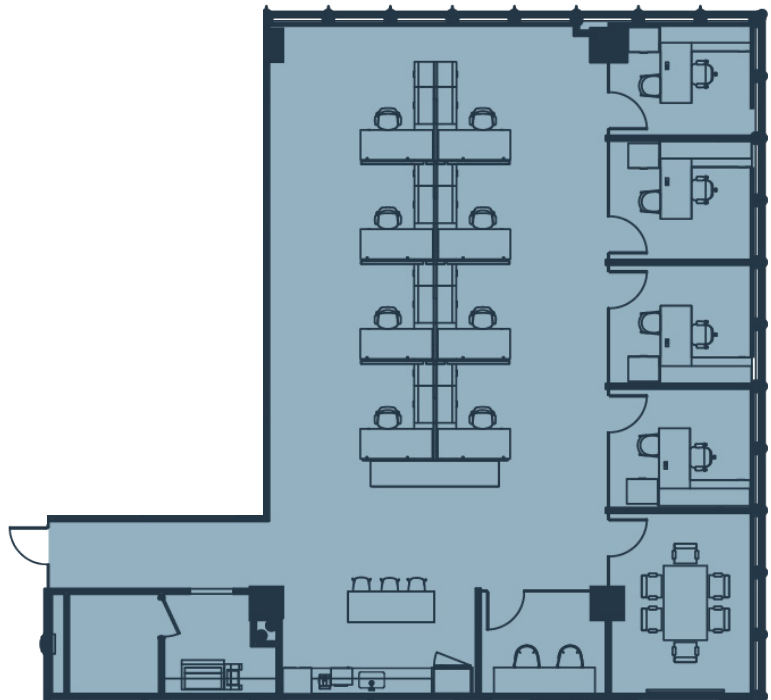
 Click for virtual tours



# SUITE 660

3,201 RSF

 Click for virtual tours



# AMENITY FLOOR

9,000 RSF Amenity  
3,600 RSF Terrace

1 MANAGEMENT OFFICE

6 CONFERENCE ROOM

2 STUDY LOUNGE

7 GRAB & GO CAFE

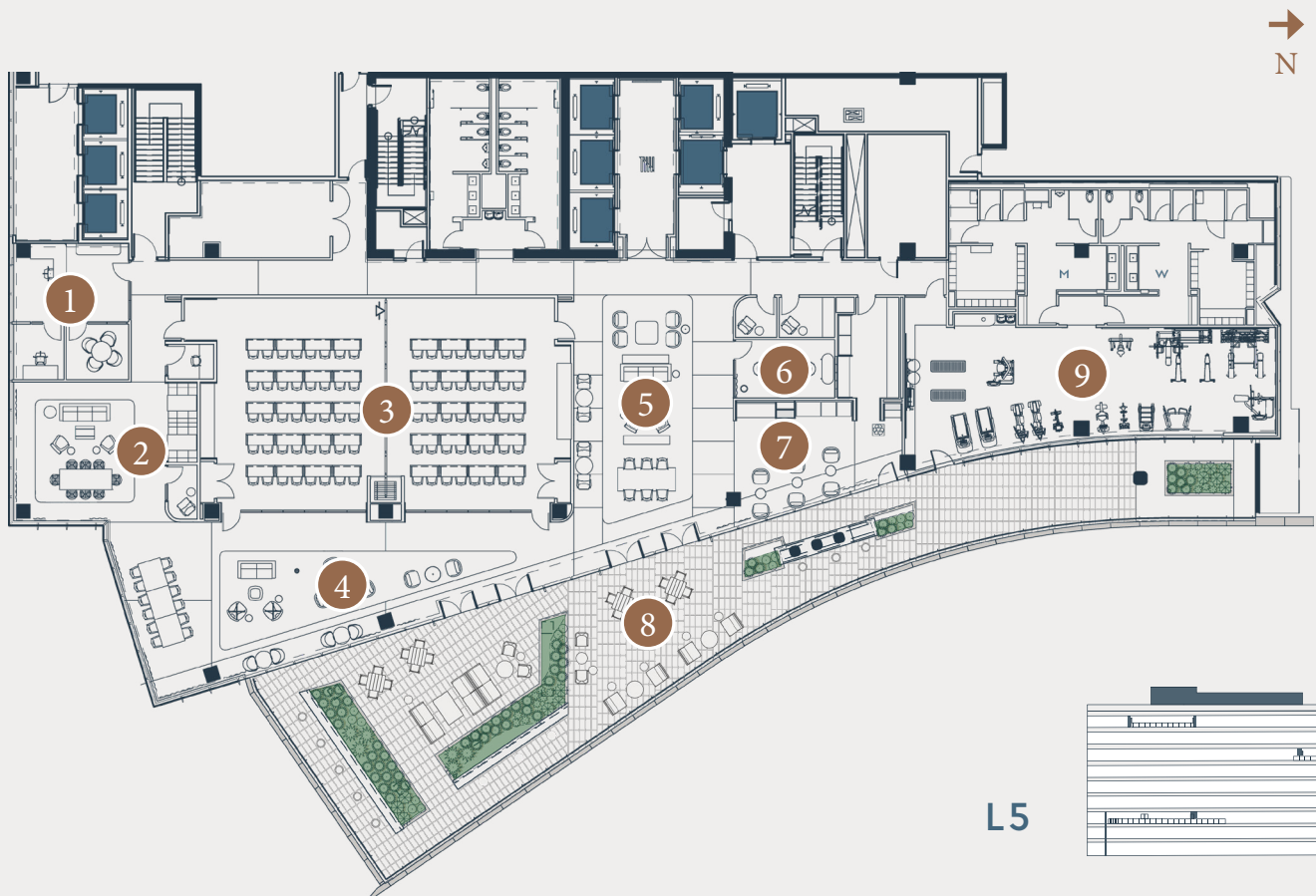
3 CONFERENCE CENTER

8 OUTDOOR TERRACE

4 TERRACE LOUNGE

9 FITNESS CENTER

5 ARRIVAL LOUNGE





OUTDOOR TERRACE



5TH FLOOR ARRIVAL LOUNGE



GRAB & GO CAFE



FITNESS CENTER



CONFERENCE CENTER

# SITE

## OFFICE

- 1 5 CITY Blvd
- 2 8 CITY BLVD

## RESIDENTIAL

- 3 Broadstone Centennial
- 4 Haven At Charlotte
- 5 The Shay Apartments

## FOOD + BEVERAGE

- 6 A. KOKOS Ice Cream  
B. SandBar Nashville
- 7 A. Sump Coffee  
B. Pastaria
- 8 E + Rose

## HOTEL

- 9 Element Nashville Vanderbilt West End

## PUBLIC SPACES

- 10 Community Table
- 11 The Watershed
- 12 The Yard
- 13 Sand Courts

## HEALTH & WELLNESS

- 14 A. D1 Training  
B. Green Pea Salon
- 15 Tru Form

- ← INGRESS
- EGRESS
- onecITY®



440





CHARLOTTE AVE



1

13

14

6

9

15

10

8

7

2

12

3

11

4

5

31ST AVE N

**CHARLIE GIBSON**

MANAGING DIRECTOR & PARTNER

charlie.gibson@streamrealty.com  
615.260.3286

**STEWART LYMAN**

MANAGING DIRECTOR

stewart.lyman@streamrealty.com  
615.336.9055

**MADDISON SICKELS**

VICE PRESIDENT

maddison.sickels@streamrealty.com  
760.504.1726

**5CITYBLVD.COM**

Spaces, dimensions, square footage and availability are approximate and are subject to change without notice.

© 2025 Convexity Properties



LOCATED AT **onec1TY**