

# *Salmon Run*

471 High Street, Salem, OR 97301



**NOW LEASING 3,891—15,661 SQ FT OFFICE SPACE**

Located in Downtown Salem; central business district. Salem's premier LEEDS certified building.

**Beautiful Creekside views!**

Spaces range from: 3,891 sq ft, Creekside Level 4,537 sq ft, 1st floor and 7,233 sq ft 2nd floor;

***Coming Available For Occupancy September 2023***

All spaces feature open bull pens, private offices, conference room, private restrooms, break area storage, and secure access. Parking Garage with Skybridge readily available.

***Lease Rate: \$21.00 RSF annually (NNN lease)***

**Walking distance to restaurants, retail and all services in downtown core!**

Call Today....  
Elaine Gesik  
503-586-7402 direct dial  
503-508-4962 cell

**1<sup>ST</sup> Premier  
Properties LLC**

# *Salmon Run*

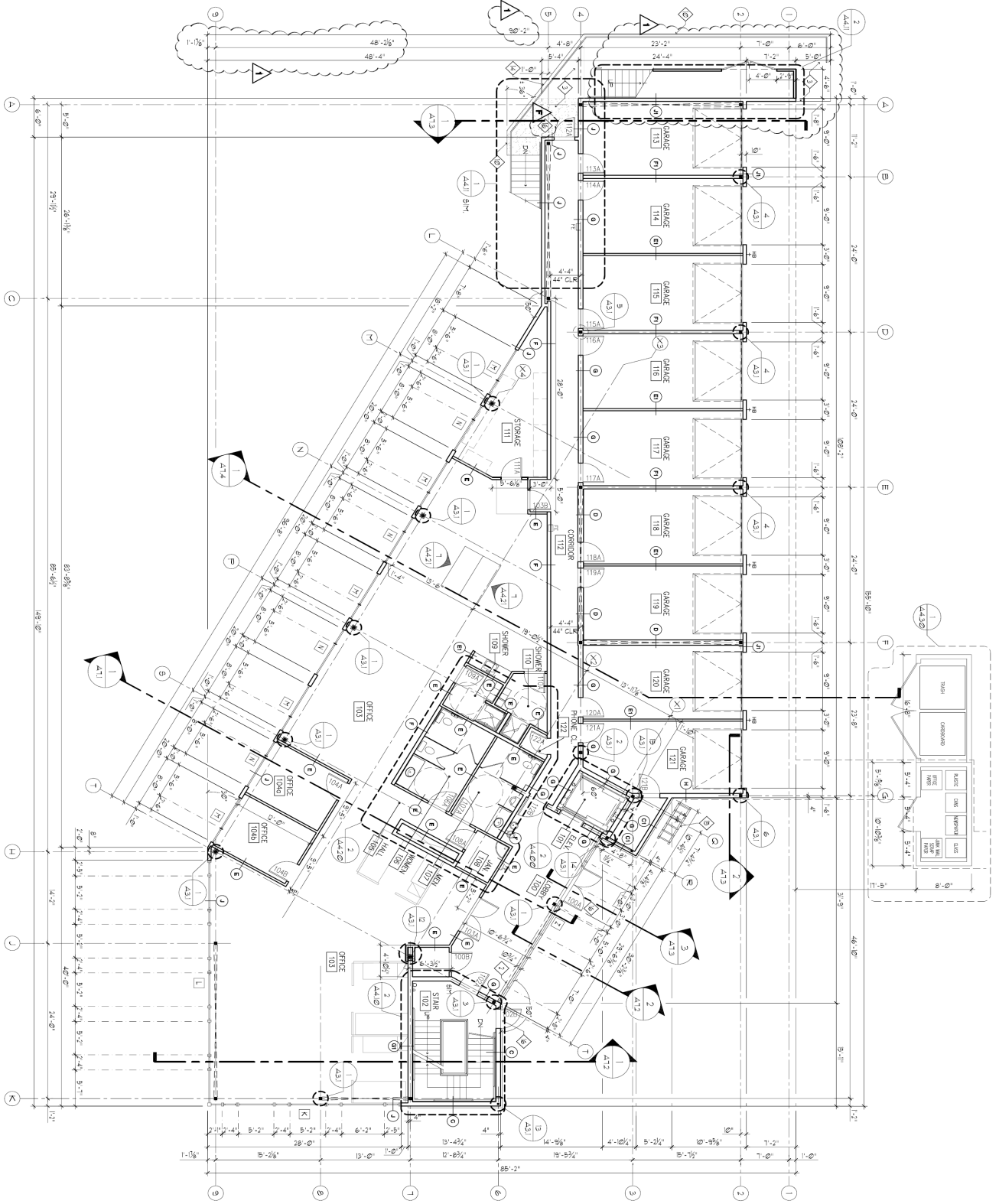
471 High Street, Salem, OR 97301



*Elaine Gesik*  
*Broker*  
*Direct Dial: 503-586-7402*  
*egesik@1st-premier.com*

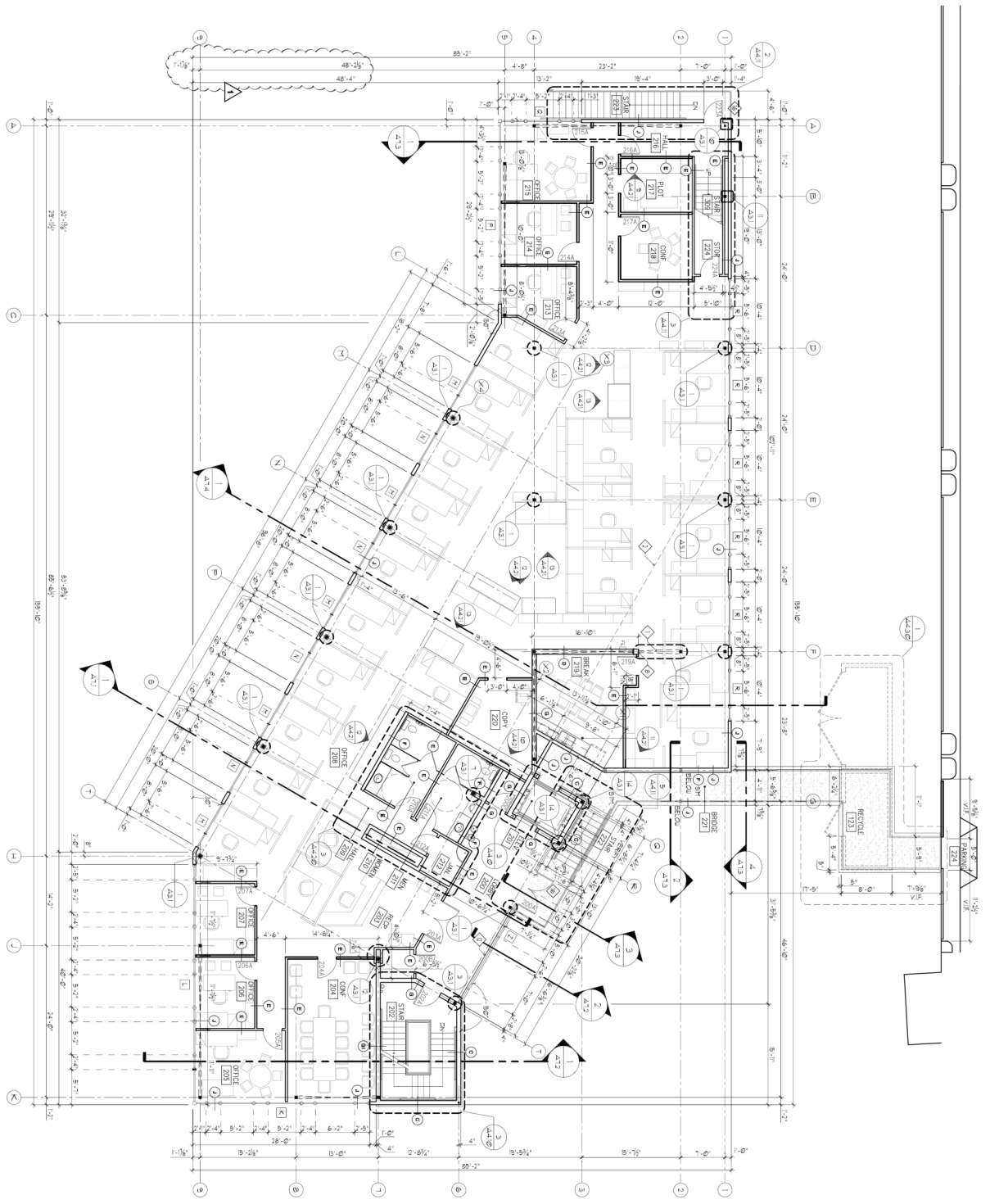
**1<sup>ST</sup>** Premier  
Properties LLC

*3950SE Fairview Industrial Drive*  
*Suite 240*  
*Salem, OR 97302*



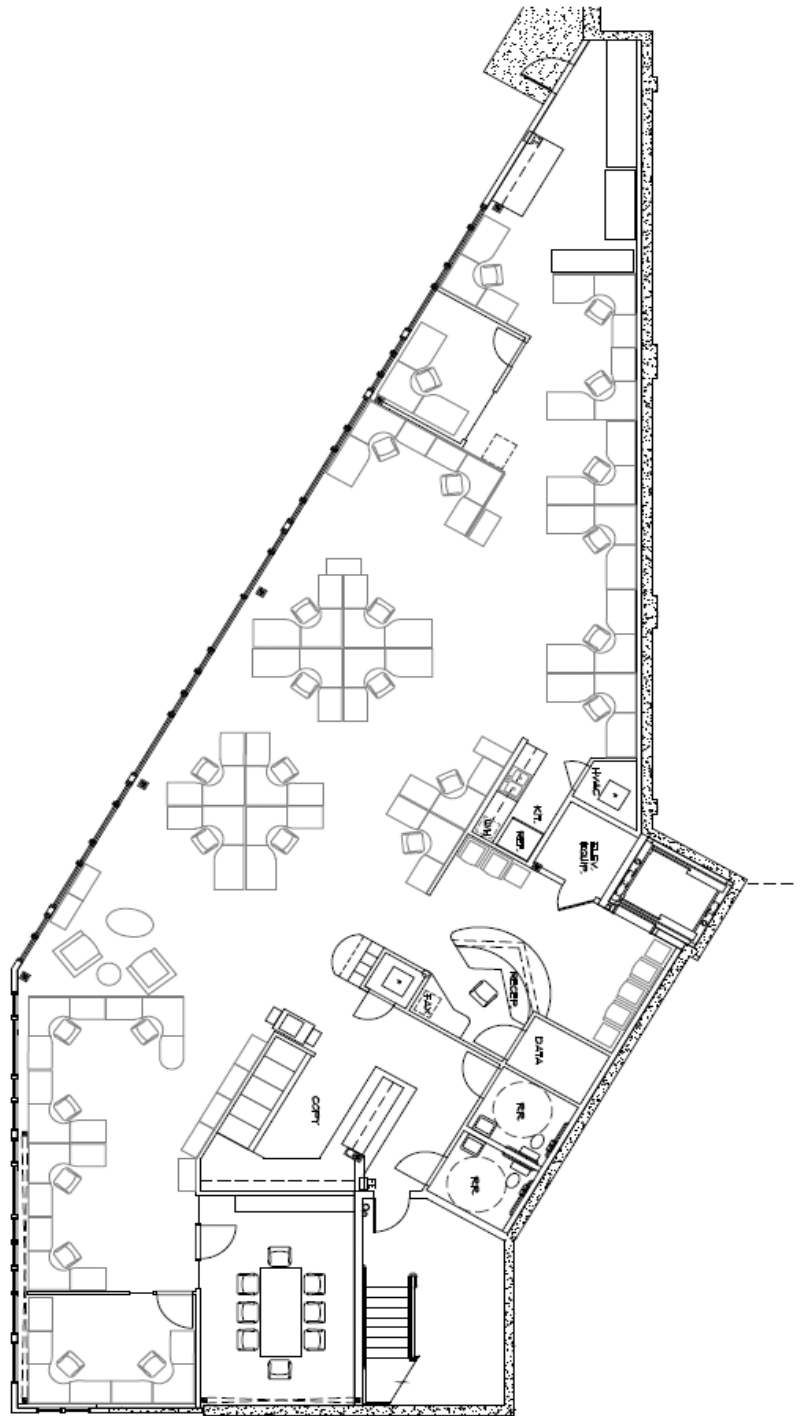
**A** Ground Level Floor Plan  
SCALE 1/8" = 1'-0"





**A** Second Level Floor Plan  
SCALE: 1/8" = 1'-0"





*Elaine Gesik*

*Broker*

*Direct Dial: 503-586-7402*

*egesik@1st-premier.com*

*Lower Level*

*3,891 sq ft*