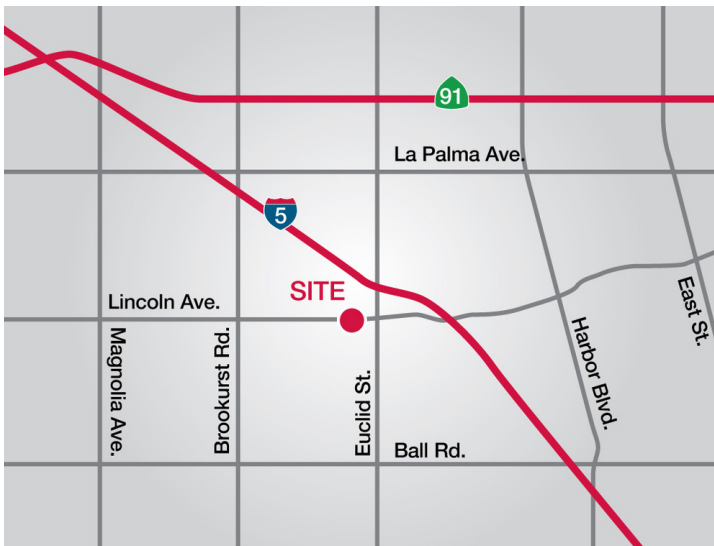


FOR SALE | INDUSTRIAL

PRICE REDUCTION



1773 W. LINCOLN AVENUE, UNITS C & D | ANAHEIM, CALIFORNIA



PROPERTY HIGHLIGHTS

- PRICE REDUCTION ONLY - \$3,000,000 or \$375/SF
- New Freestanding Industrial Building
- Approximately 8,000 Sq. Ft.- Units C & D - 4,000 SF Each
- Approximately 1,300 Sq. Ft. Office (Please verify Each Side), Fully HVAC
- 200 AMPS (Please verify) - 240V Each Unit
- 14' - 16' Clearance
- 3 GL Door (Unit C - 1 GL & Unit D - 2 GL)
- Excellent Access to 5, 57, 91 & 92 Freeways

EXCLUSIVELY LISTED BY:

Paul Fisher

Executive Vice President
949.468.2324 Direct
pfisher@naicapital.com
CA DRE #01302114

PROPERTY OVERVIEW

This strategic location ensures seamless connectivity and accessibility for industrial and manufacturing operations. Don't miss out on this versatile and promising investment in the thriving industrial landscape of Anaheim.



www.naicapital.com

PROPERTY PHOTOS



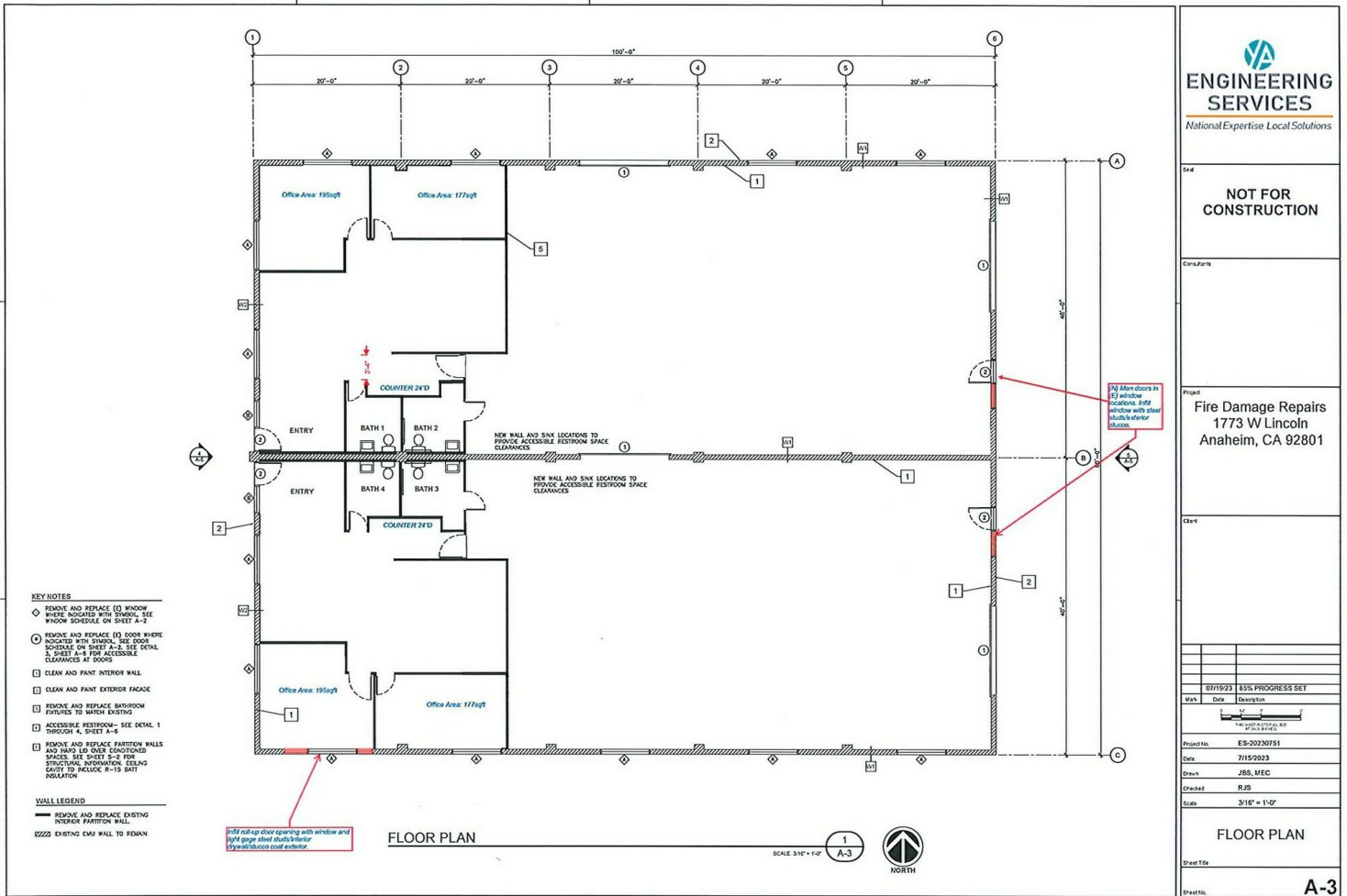
Paul Fisher
Executive Vice President
949.468.2324 Direct
pfisher@naicapital.com

CA DRE #01302114

©NAI Capital Commercial, Inc. Content in this document may include AI generated or alerted text, images and/or analysis. No warranty, express or implied, is made as to the accuracy of the information contained herein. This information is submitted subject to errors, omissions, change of price, rental or other conditions, withdrawal without notice, and is subject to any special listing conditions imposed by our principals. Cooperating brokers, buyers, tenants and other parties who receive this document should not rely on it, but should use it as a starting point of analysis, and should independently confirm the accuracy of the information contained herein through a due diligence review of the books, records, files and documents that constitute reliable sources of the information described herein. Unedited images viewable at naicapital.com | Cal DRE Lic #02130474.

NAI Capital | 1920 Main Street | Suite 100 | Irvine, CA 92614

FLOOR PLAN



<p>ENGINEERING SERVICES National Expertise. Local Solutions.</p>					
<p>NOT FOR CONSTRUCTION</p>					
<p>Project: Fire Damage Repairs 1773 W Lincoln Anaheim, CA 92801</p>					
<p>Client:</p>					
<table border="1"> <thead> <tr> <th>DATE</th> <th>DESCRIPTION</th> </tr> </thead> <tbody> <tr> <td>07/15/23</td> <td>85% PROGRESS SET</td> </tr> </tbody> </table>		DATE	DESCRIPTION	07/15/23	85% PROGRESS SET
DATE	DESCRIPTION				
07/15/23	85% PROGRESS SET				
<p>Project No. ES-20230761 Date: 7/15/2023 Drawn: JBS, MEC Checked: RJB Scale: 3/16" = 1'-0"</p>					
<p>FLOOR PLAN</p>					
<p>Sheet Title: A-3</p>					

Paul Fisher
Executive Vice President
949.468.2324 Direct
pfisher@naicapital.com

CA DRE #01302114

©NAI Capital Commercial, Inc. Content in this document may include AI generated or alerted text, images and/or analysis. No warranty, express or implied, is made as to the accuracy of the information contained herein. This information is submitted subject to errors, omissions, change of price, rental or other conditions, withdrawal without notice, and is subject to any special listing conditions imposed by our principals. Cooperating brokers, buyers, tenants and other parties who receive this document should not rely on it, but should use it as a starting point of analysis, and should independently confirm the accuracy of the information contained herein through a due diligence review of the books, records, files and documents that constitute reliable sources of the information described herein. Unedited images viewable at naicapital.com | Cal DRE Lic #02130474.