

FOR LEASE

SECOND GEN RESTAURANT

- 4,487 SF (2,059 SF street + 2,131 SF second floor + 297 SF lower)
- Fully built-out restaurant
- Directly across from Capital One Arena
- 2 blocks from Gallery Place and Judiciary Square Metro Stations

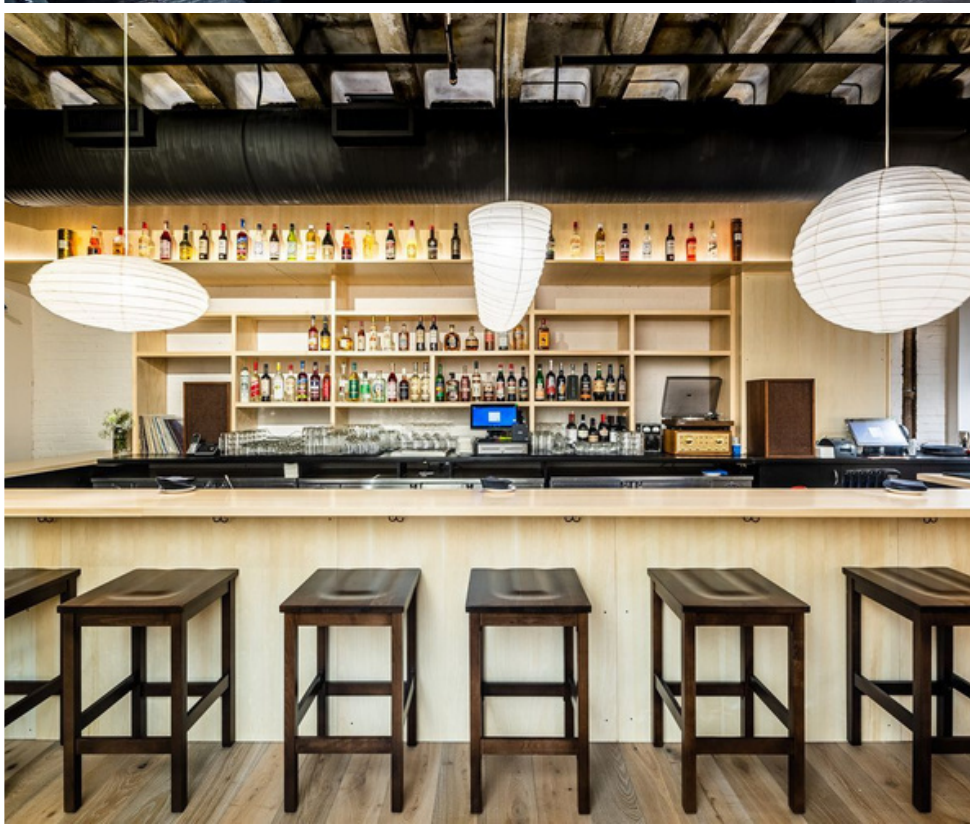
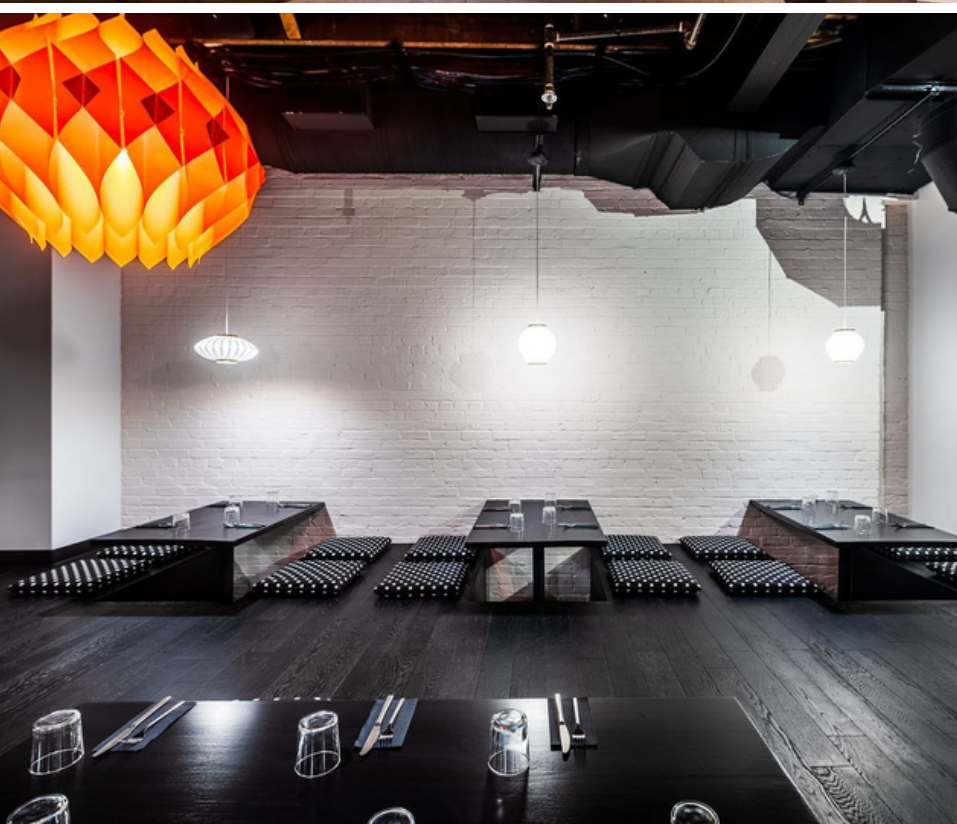
707 6TH STREET NW

WASHINGTON, DC 20001



NICHOLAS PAPADOPOULOS | 202.321.2000  | NPAP@PAPADOP.COM 

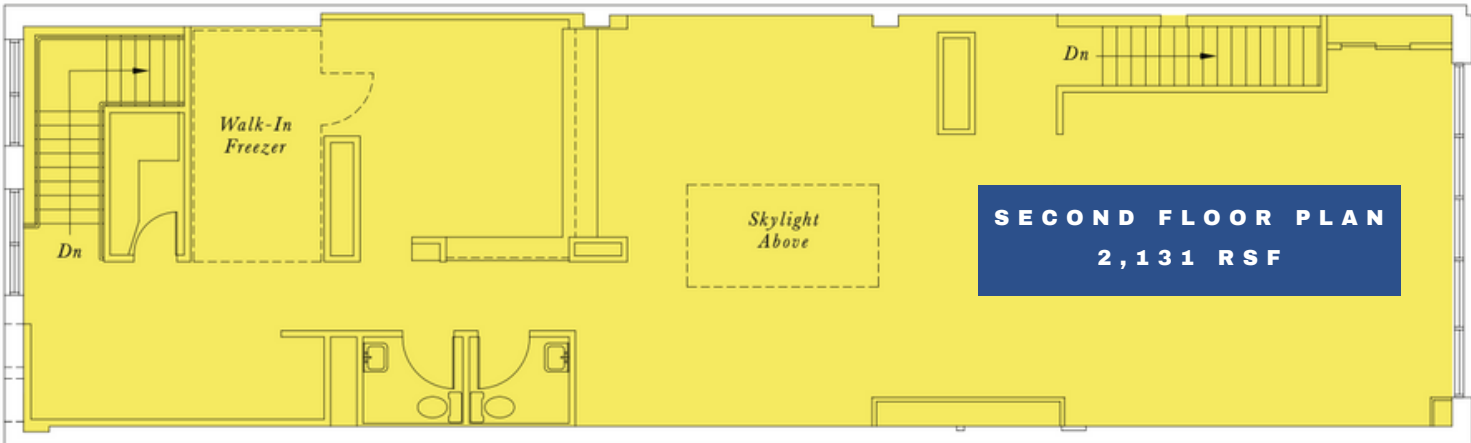
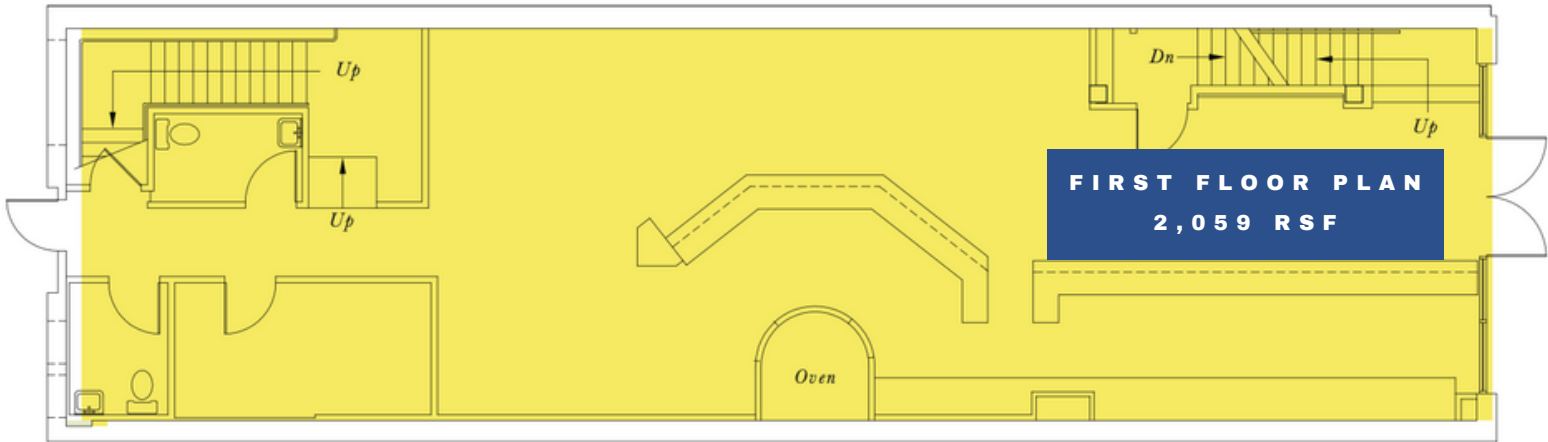
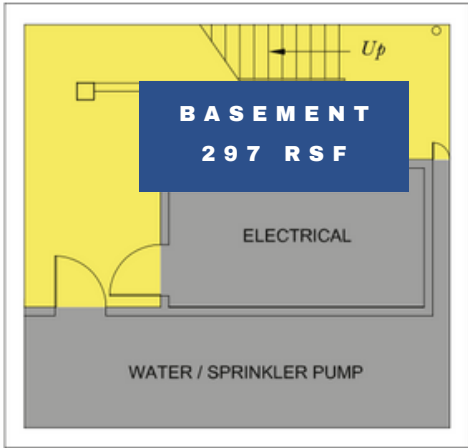
LAUREN GRECO | 412.400.1019  | LGRECO@PAPADOP.COM 



THE SPACE

SITE PLAN

6TH STREET NW



WALK SCORE



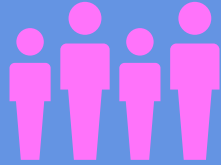
97

BIKE SCORE



96

15-MINUTE WALK TIME DEMOGRAPHICS



26,867

POPULATION



\$115,763

MEDIAN HOUSEHOLD INCOME



34.7

MEDIAN AGE



\$86,166

MEDIAN DISPOSABLE INCOME

