

SYLVERTREE POMPANO

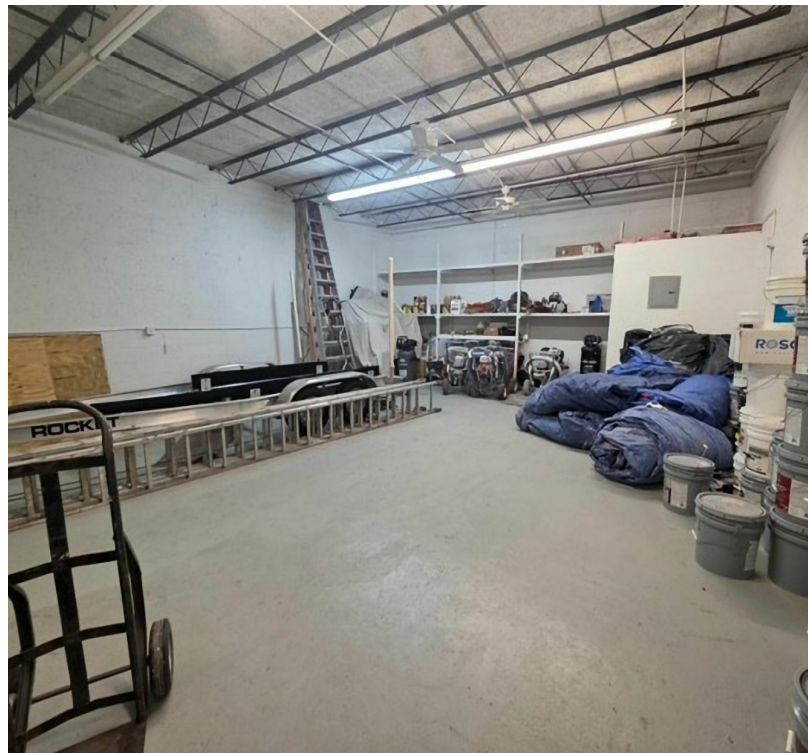
1411, 1421, 1451-1461 SW 12TH AVE, POMPANO BEACH, FL 33069

1421-C SW 12TH AVE



SPACE HIGHLIGHTS

- 1,160 SF
- 160 SF air-conditioned office
- Front 10' x 10' grade level overhead door
- Private restroom
- Single 125Amps power
- 2 Parking spaces



NATALIE DELISLE

Property Manager / Sales Associate
954.678.2362
natalie@levyai.com



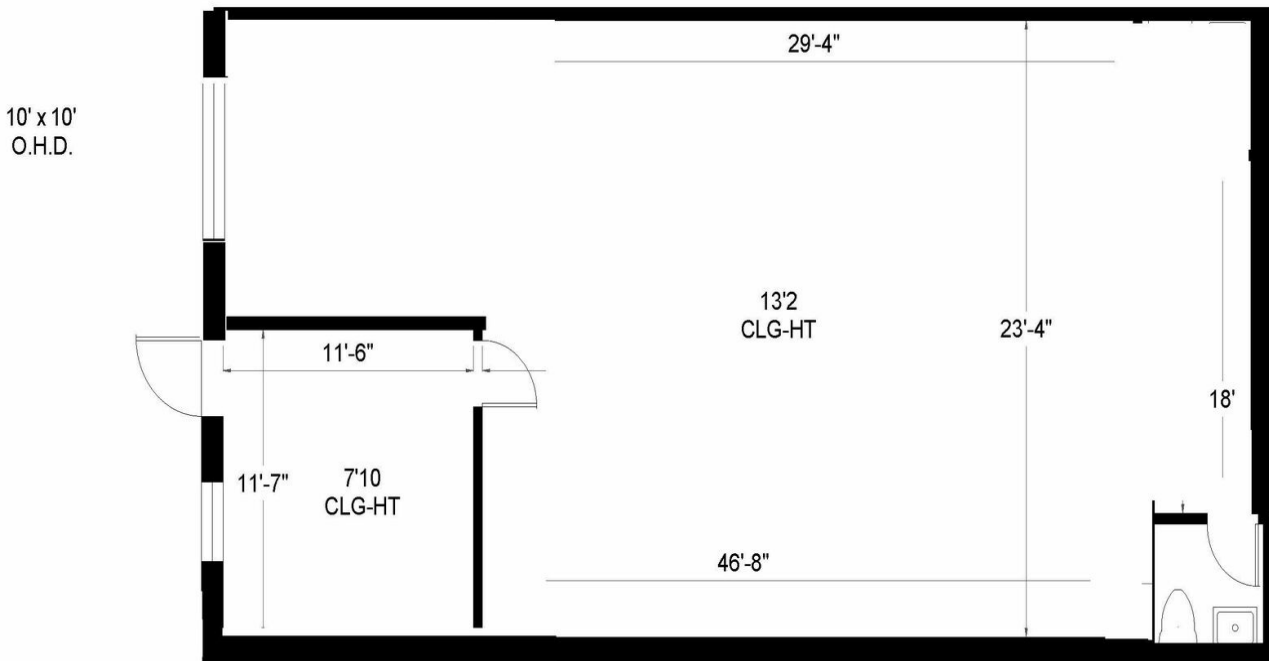
SYLVERTREE POMPANO

1411, 1421, 1451-1461 SW 12TH AVE, POMPANO BEACH, FL 33069

1421-C SW 12TH AVE FLOOR PLAN

SYLVER TREE HOLDINGS, LLC

1421 SW 12th Avenue, Unit C | Pompano Beach, FL 33060



Office - 160 Sq. Ft.
Warehouse - 1,000 Sq. Ft.

1,160 Rentable Sq. Ft.
www.LevyRealtyAdvisors.com

NATALIE DELISLE

Property Manager / Sales Associate
954.678.2362
natalie@levyrai.com

