



RETAIL SPACE FOR LEASE

HARRELL SQUARE

2000 SAM RITTENBERG BLVD, CHARLESTON SC 29407

CONVENIENTLY
LOCATED IN
WEST ASHLEY

QUICK ACCESS TO
DOWNTOWN AND
NORTH CHARLESTON

ONSITE FOOD AND
PROFESSIONAL
SERVICES

SCHEDULE A TOUR TODAY

BOB CALDWELL, SIOR BOB@CALDWELLCOMMERCIAL.COM

843.566.1888 | CALDWELLCOMMERCIAL.COM

PROPERTY OVERVIEW

AVAILABLE SUITE
SUITE 128: 1,100 SF

LOT SIZE
2.88 ACRES

BUILDING SIZE
53,715 SF

YEAR RENOVATED
2004

YEAR BUILT
1985

TRAFFIC COUNT
27,700

MARKET
CHARLESTON

SUBMARKET
11 - WEST ASHLEY INSIDE
1-526 TO ASHLEY RIVER

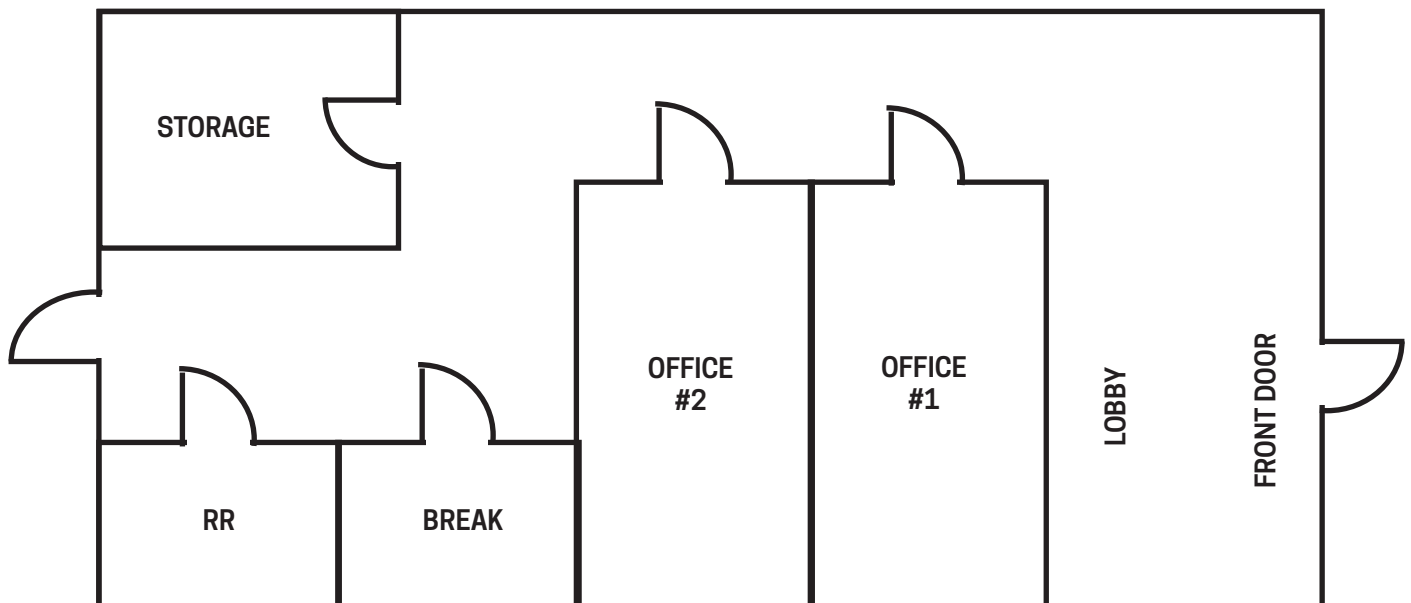
HIGHLIGHTS

Harrell Square is a **well-known and highly visible retail location**, with a prime signage opportunity along the heavily trafficked Sam Rittenberg Boulevard.

Neighboring national retailers include Panera, FedEx, Target, Costco, PetSmart, Hampton Inn & Suites, Best Buy, Planet Fitness, and Holiday Inn.

Easily accessible from Interstate 526, Highway 17, and Sam Rittenberg Boulevard, the major arteries throughout Charleston.

AVAILABLE SPACE

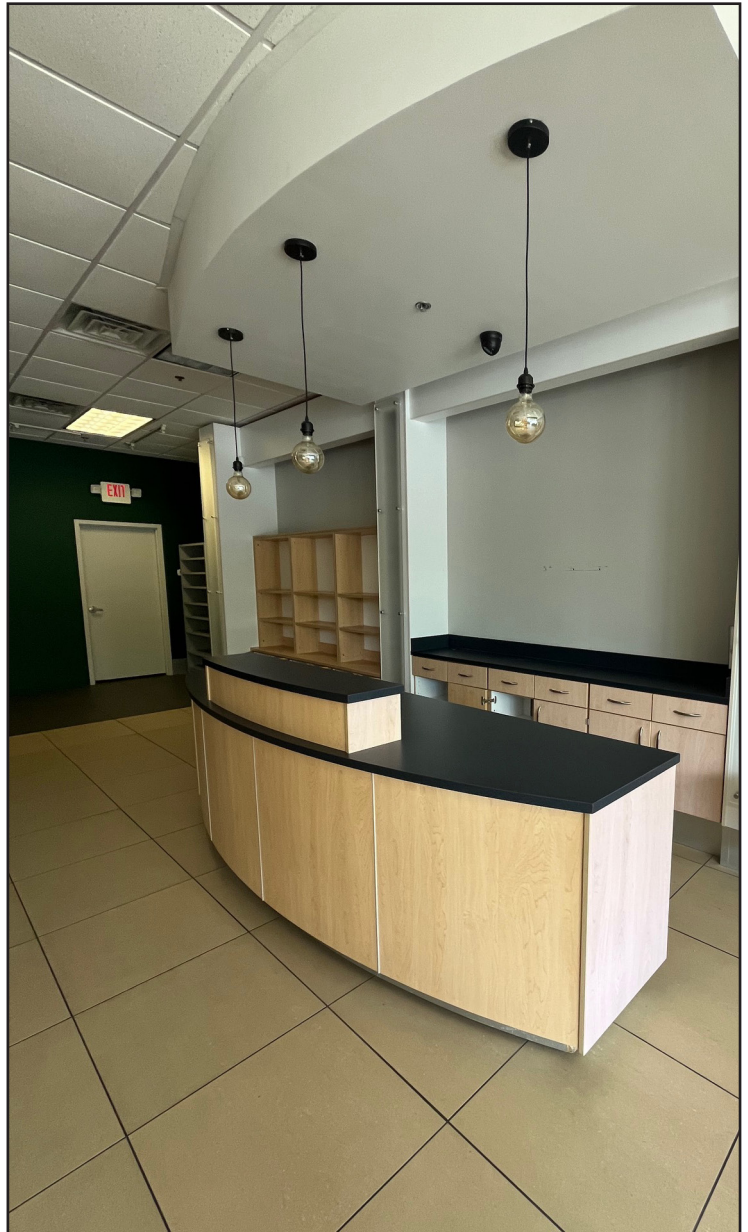


Floorplan is an estimate and is not drawn to scale

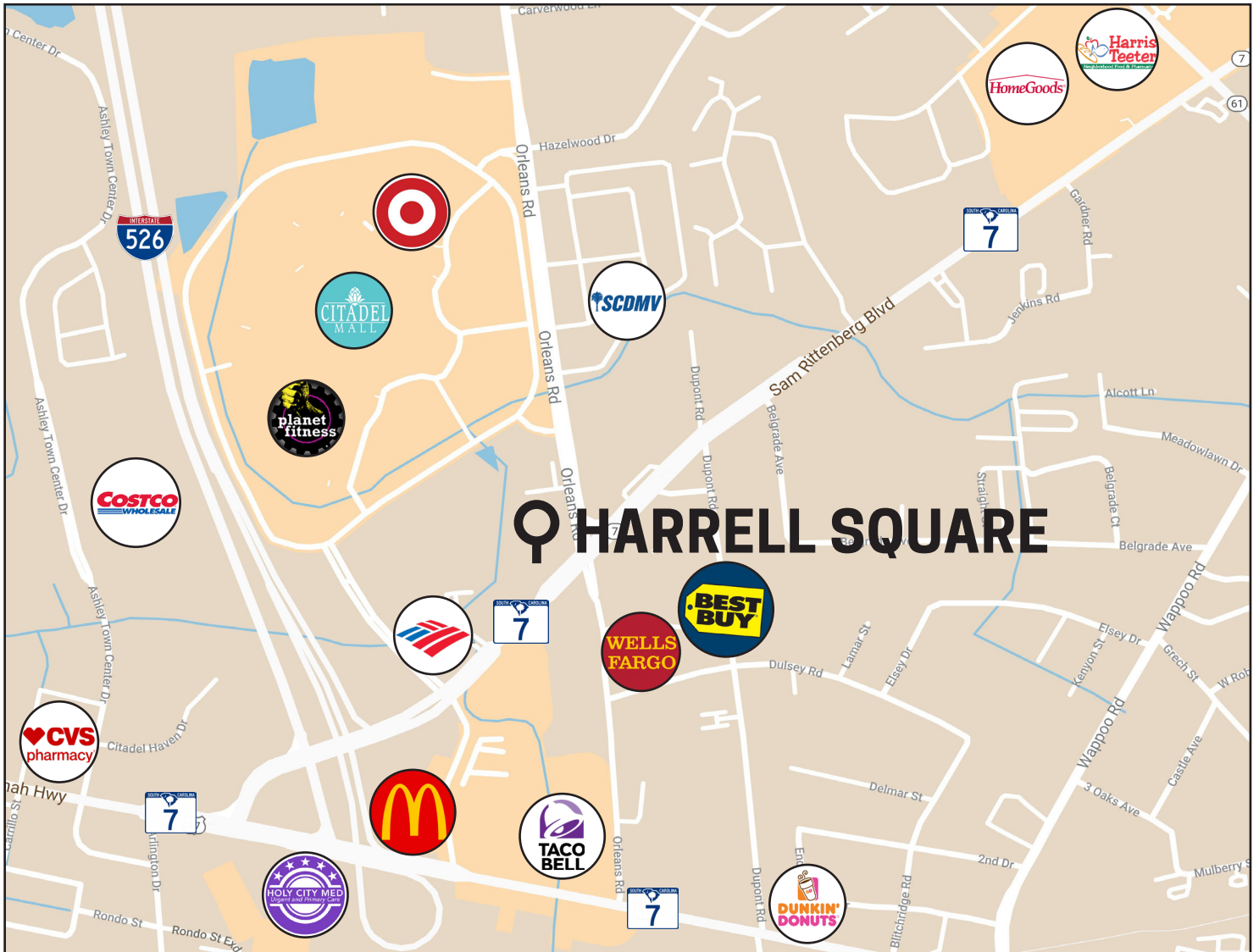
SUITE 128

SPACE SIZE: 1,100 SF

SUITE 120



PRIME LOCATION



Harrell Square is located in the heart of West Ashley, one of Charleston's fastest-growing areas.

This highly-coveted retail space is situated at the corner of Sam Rittenberg Boulevard and Orleans Road. Interstate 526 offers quick access to downtown and North Charleston.

This is a high traffic area, and there's no shortage of food, shops, and professional services located conveniently nearby.

YOUR NEIGHBORS



Harrell Square offers office, flex, and retail space. We are proud to host a variety of tenants:

- ☑ H&R BLOCK
- ☑ AMERICAN RED CROSS
- ☑ GAMESTOP
- ☑ CHECK N GO
- ☑ PANERA BREAD
- ☑ HARRELL INSURANCE
- ☑ MIRACLE EAR
- ☑ HARREL LAW FIRM
- ☑ REMAX SOUTHERN SHORES
- ☑ FOCUS MEDS PHARMACY AND WELLNESS

THE CALDWELL COMMERCIAL TEAM



BOB CALDWELL
CCRE PRESIDENT AND SIOR

LICENSED IN SOUTH CAROLINA,
NORTH CAROLINA, AND GEORGIA
ACTIVE SIOR MEMBER SINCE 2008



ROBERT ROWAN
SENIOR PROPERTY MANAGER

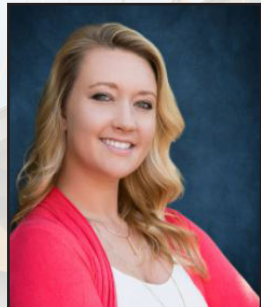
CERTIFIED PROPERTY MANAGER,
LEED ACCREDITED PROFESSIONAL,
ACTIVE SC IREM CHAPTER 72 MEMBER



KACEY GOUGE
TENANT SERVICES COORDINATOR



JOSH STERKEL
PROPERTY MANAGER



LAURA COX
**ACCOUNT
CONTROLLER**



ALEAH WARNER
**MARKETING &
GRAPHIC DESIGN**



CALDWELL
COMMERCIAL
REAL ESTATE
SERVICES

CONTACT:

BOB CALDWELL, SIOR

BOB@CALDWELLCOMMERCIAL.COM

843.566.1888 | CALDWELLCOMMERCIAL.COM