

Tools

Measure Tools

Area: 82.0 acres
Length: 8713 feet (1.7 miles)

Select Features by Buffer

This data is NOT accurate.
It is for entertainment purposes only.
Coordinates are in State Plane Feet.

Easting (x)	Northing (y)
1712910	564932
1712917	564925
1712917	564928
1715115	564881
1715112	563489
1714360	563495
1714356	562794
1713427	562491
1713417	563819
1713288	564050
1713179	564227
1713114	564319
1712906	564594
1712811	564635
1712910	564932

Bearing	Distance
S 45°00' 00" E	10
Due North	3
S 88°45' 31" E	2199
S 0°08' 24" W	1392
N 89°28' 53" W	752
S 0°16' 41" W	701
S 68°57' 45" W	853
N 88°31' 52" W	133
N 0°26' 27" W	1327
N 29°11' 51" W	265
N 31°36' 27" W	208
N 35°08' 03" W	112
N 38°01' 38" W	337
N 61°49' 17" W	108
N 18°26' 06" E	312

Swipe Left or C...

About Lay... Leg...

Layer Opacity

Preset Views

Table of Contents

Planimetrics

- On Lbl Name
- Address Points
- Adjacent Counties
- Flood Hazard Areas
- Parcels
- Roads
- Streams
- Towns
- Uwharrie Nat. Forest
- Trails
- Voluntary Ag. District
- Contours

Overlays

- On Lbl Name
- ArcGIS World Imagery
- Aerial Pictometry (Countywide 2026)
- Aerial Imagery (2019)
- Aerial Imagery (2015)
- Aerial Imagery (2010)
- Biscoe Zoning
- Board of Education Districts
- County Boundary
- Fire Districts
- Board of County Commissioners Districts
- Townships
- Troy Zoning
- Voting District Precincts
- Watersheds
- Zoning

Results

N: 565275 E: 1715489
Lat: 35°17' 58.0" Lng: -79°57' 13.1"

Exhibit A

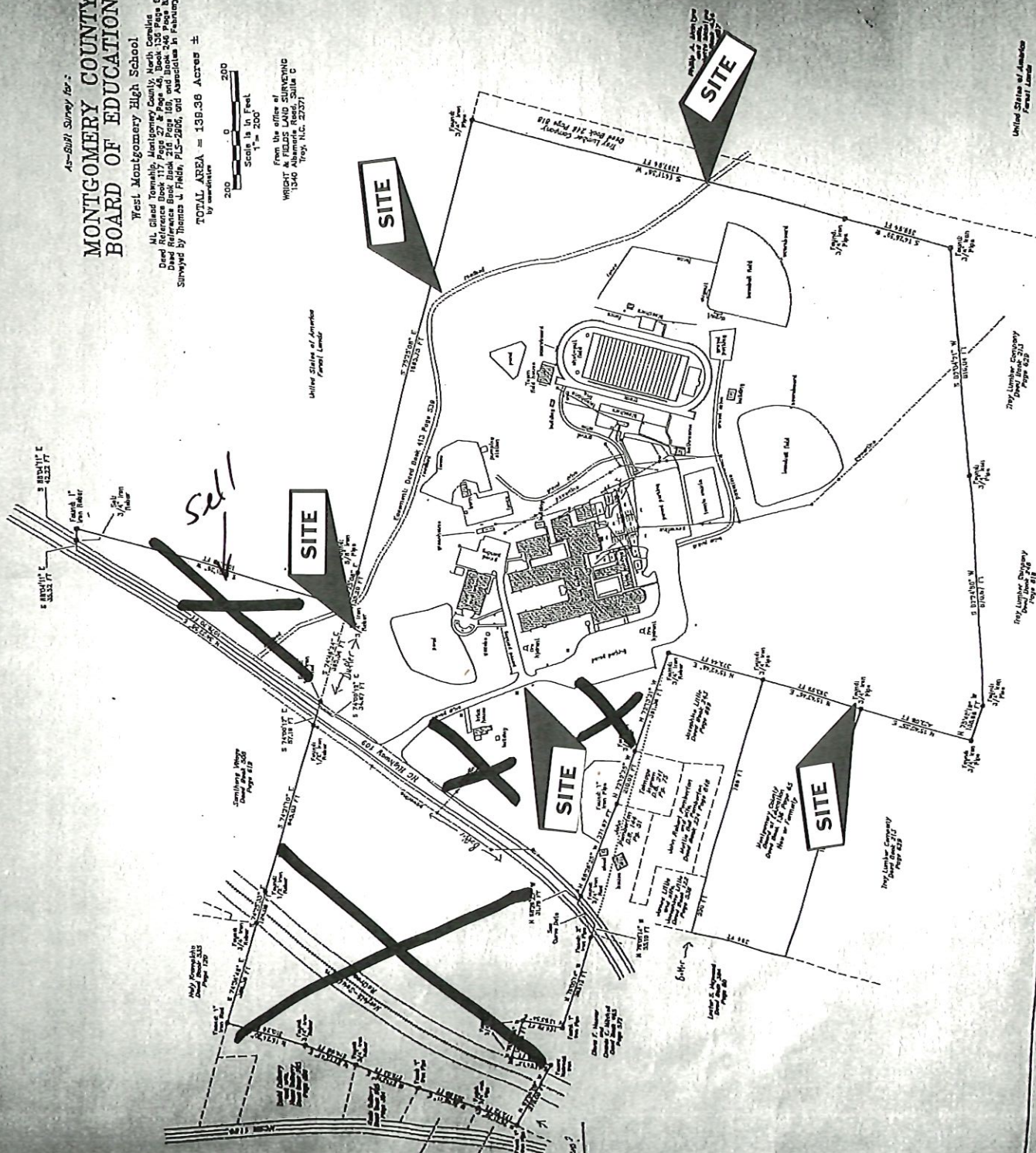


As-Sold Survey for:
**MONTGOMERY COUNTY
 BOARD OF EDUCATION**

West Montgomery High School
 Mt. Glad Township, Montgomery County, North Carolina
 Deed Reference Book 216 Page 65,
 Deed Reference Book 218 Page 108, and Book 246 Page 833.
 Surveyed by Thomas A. Field, PLS-2566, old Association in February 2006.
TOTAL AREA = 139.36 Acres ±
 by acreage

Scale: 1" = 200'
 0 100 200
 Feet

From the office of
 WALTER A. HARRIS, PLS-2566
 1840 Alameda Road, Suite C
 Tryon, N.C. 27371



United States of America
 Patent Land

Tryon Lumber Company
 Deed Book 216
 Page 65

Tryon Lumber Company
 Deed Book 218
 Page 108

Montgomery County
 Deed Book 246
 Page 833



WALTER A. HARRIS
 PLS-2566
 1840 Alameda Road, Suite C
 Tryon, N.C. 27371
 Surveyed and Platted by
 WALTER A. HARRIS, PLS-2566
 in February 2006