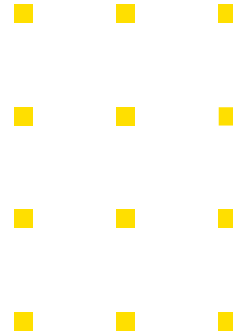




2020  
PONCE

savills



For lease

# Coral Gables' *finest* business address

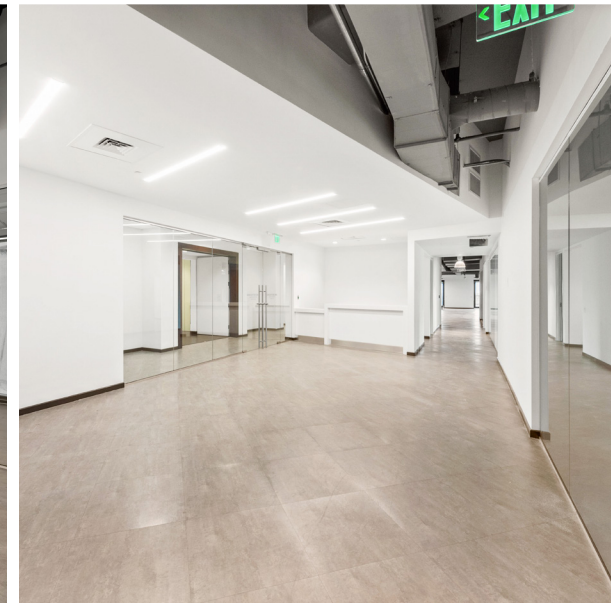
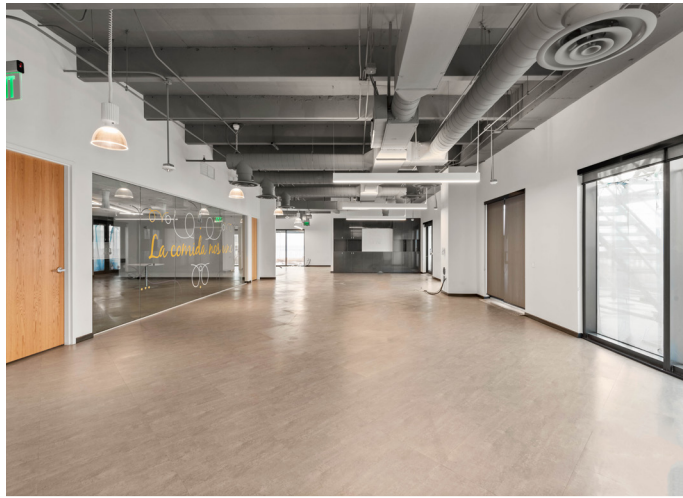
2020 PONCE DE LEON BLVD, CORAL GABLES, FL 33134



# Unique office opportunity in Coral Gables

- Grand entrance lobby featuring 24/7 security, soaring ceilings, contemporary art, imported marble, and stainless-steel finishes
- Four covered parking spaces for every 1,000 square feet leased - one of the highest parking ratios in Coral Gables
- Central location within walking distance to 50+ restaurants on Giralda's Restaurant Row, Ponce de Leon Blvd, and Miracle Mile
- Trolley stop within one block conveniently connecting tenants to all of Coral Gables

VIEWS FROM SUITE 800'S WRAPAROUND TERRACE



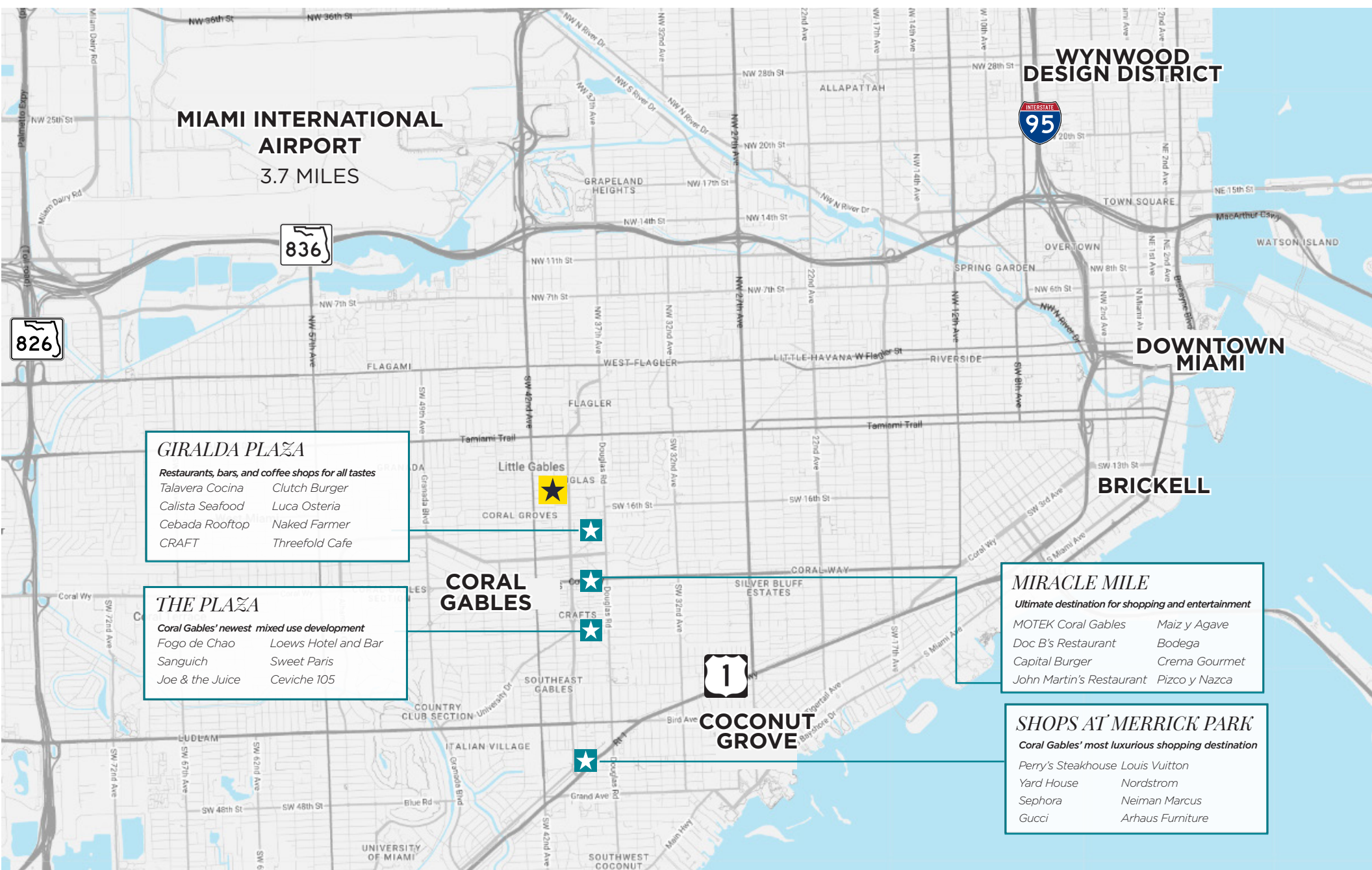
# Full-floor HQ opportunity in Coral Gables

- Secure an entire 16,424-square-foot floor at 2020 Ponce, featuring Suite 800 with a fully built-out, column-free layout, an exclusive wrap-around terrace, and breathtaking views of Coral Gables and the Miami skyline.
- Suite 800 was designed with exposed ceilings and impact-resistant windows that flood the space with natural light.
- The space is fully built-out, offering a balanced mix of open areas, conference rooms, a kitchen, and private offices.
- Built-out with top-tier, class-A finishes, tailored for the modern professional.
- Exclusive Wrap-Around Terrace offering a spacious private terrace with stunning views of the Miami skyline, ideal for hosting events and more.

# Classic and quintessential *in Coral Gables*

★ 2020 PONCE

Over 50+ restaurants, lifestyle destinations, and retail are within walking distance of 2020 Ponce. Here's a few of the top:



**MIAMI INTERNATIONAL AIRPORT**  
3.7 MILES

**WYNWOOD DESIGN DISTRICT**  
INTERSTATE 95

**DOWNTOWN MIAMI**

**BRICKELL**

**GIRALDA PLAZA**  
*Restaurants, bars, and coffee shops for all tastes*

Talavera Cocina	Clutch Burger
Calista Seafood	Luca Osteria
Cebada Rooftop	Naked Farmer
CRAFT	Threefold Cafe

**THE PLAZA**  
*Coral Gables' newest mixed use development*

Fogo de Chao	Loews Hotel and Bar
Sanguich	Sweet Paris
Joe & the Juice	Ceviche 105

**MIRACLE MILE**  
*Ultimate destination for shopping and entertainment*

MOTEK Coral Gables	Maiz y Agave
Doc B's Restaurant	Bodega
Capital Burger	Crema Gourmet
John Martin's Restaurant	Pizco y Nazca

**SHOPS AT MERRICK PARK**  
*Coral Gables' most luxurious shopping destination*

Perry's Steakhouse	Louis Vuitton
Yard House	Nordstrom
Sephora	Neiman Marcus
Gucci	Arhaus Furniture

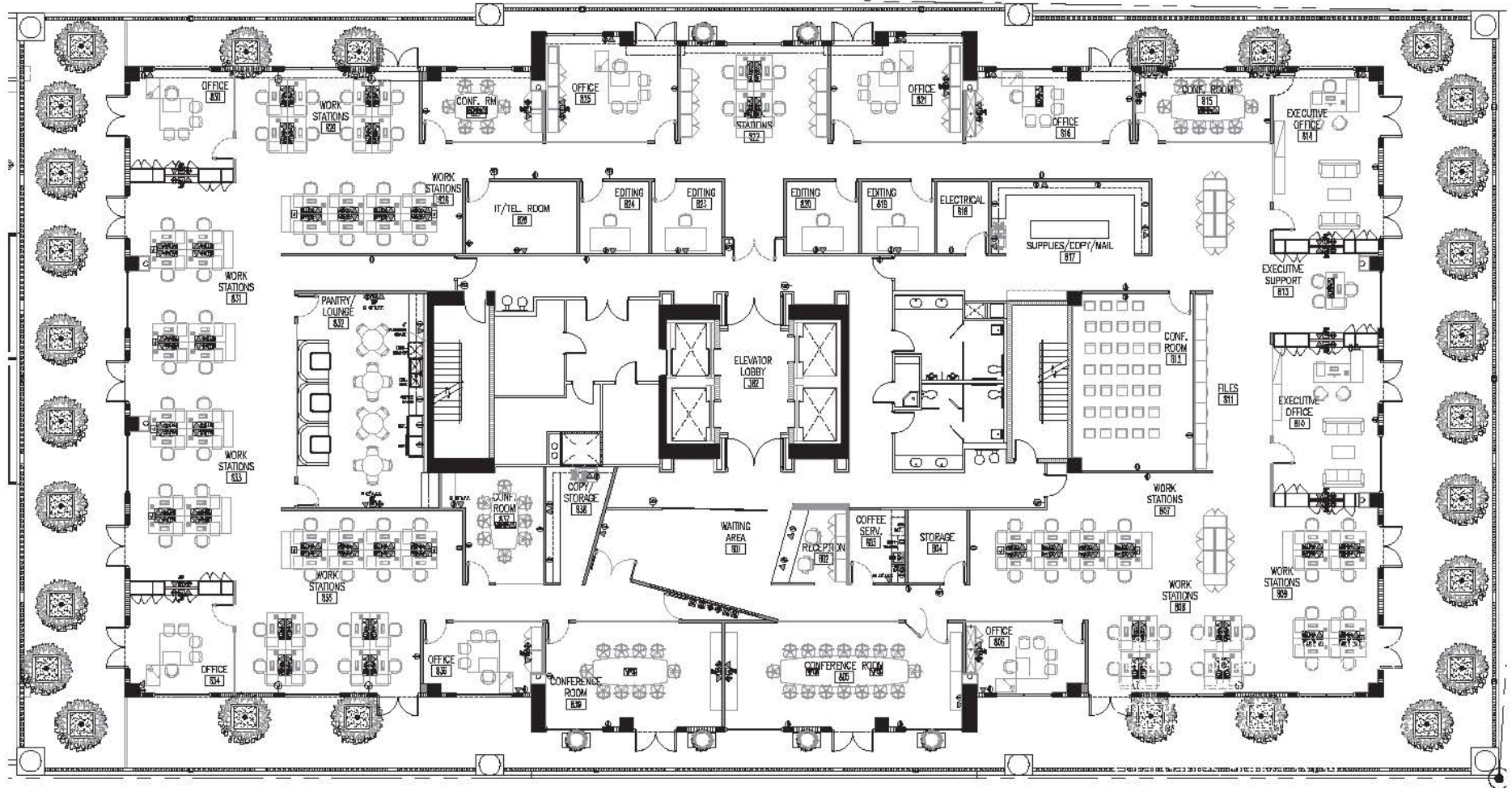
**CORAL GABLES**

**COCONUT GROVE**



# Suite 800

+/- 16,424 SF





*For leasing information:*



**Donna Abood**

Vice Chairman & Co-Head of Florida  
+1 305 423 1927  
dabood@savills.us

**Joe Abood**

Managing Director  
+1 305 423 1925  
jabood@savills.us

**Peyton Dowd**

Managing Director  
+1 305 423 1926  
pdowd@savills.us

savills

© 2024 Savills. All rights reserved. The information contained in this communication has been obtained from a variety of sources believed to be reliable but has not been verified. NO WARRANTY OR REPRESENTATION, EXPRESS OR IMPLIED, IS MADE AS TO THE CONDITION OF THE PROPERTY OR ACCURACY OR COMPLETENESS OF THE INFORMATION CONTAINED HEREIN AND SAME IS SUBMITTED SUBJECT TO ERRORS, OMISSIONS, CHANGE OF PRICE, RENTAL OR OTHER CONDITIONS, WITHDRAWAL WITHOUT NOTICE AND TO ANY SPECIFIC CONDITIONS IMPOSED BY THE PROPERTY OWNER OR LESSOR.

savills.us