

# Available For Sale or Lease

# 5850

CORRIDOR PARKWAY

SCHERTZ, TEXAS 78154

## RENOVATIONS COMPLETE!

- Move-in ready space
- Updated offices
- LED lighting throughout offices and warehouse
- New interior and exterior paint



## Highlights

5850 Corridor Parkway is a 41,000 square foot warehouse/distribution building located in Tri-County Business Park.



- 41,000 SF Available w/ 60+ parking spaces
- ESFR sprinklered
- LED Lighting
- 3 Phase-480v-1100 Amp Power
- ± 6,838 square feet office space
- 7 dock doors with ability to expand
- 1 grade-level door with ability to expand
- 1 ramp
- 24' clear height
- Zoning: GB Zoning
- Available Now
- Call broker for pricing

  
STREAM

**Andrew Katzfey - 210.298.8537**  
andrew.katzfey@streamrealty.com

**Kevin Cosgrove - 210.298.8527**  
kevin.cosgrove@streamrealty.com

# 5850

CORRIDOR PARKWAY

SCHERTZ, TEXAS 78154

41,000 SF Standalone  
Industrial Distribution Building  
Available For Sale or Lease



## Drive Times

IH-35:	Immediate
Loop 1604:	5 Minutes
Loop 410:	10 Minutes
IH-10:	15 Minutes



# 5850

CORRIDOR PARKWAY

SCHERTZ, TEXAS 78154

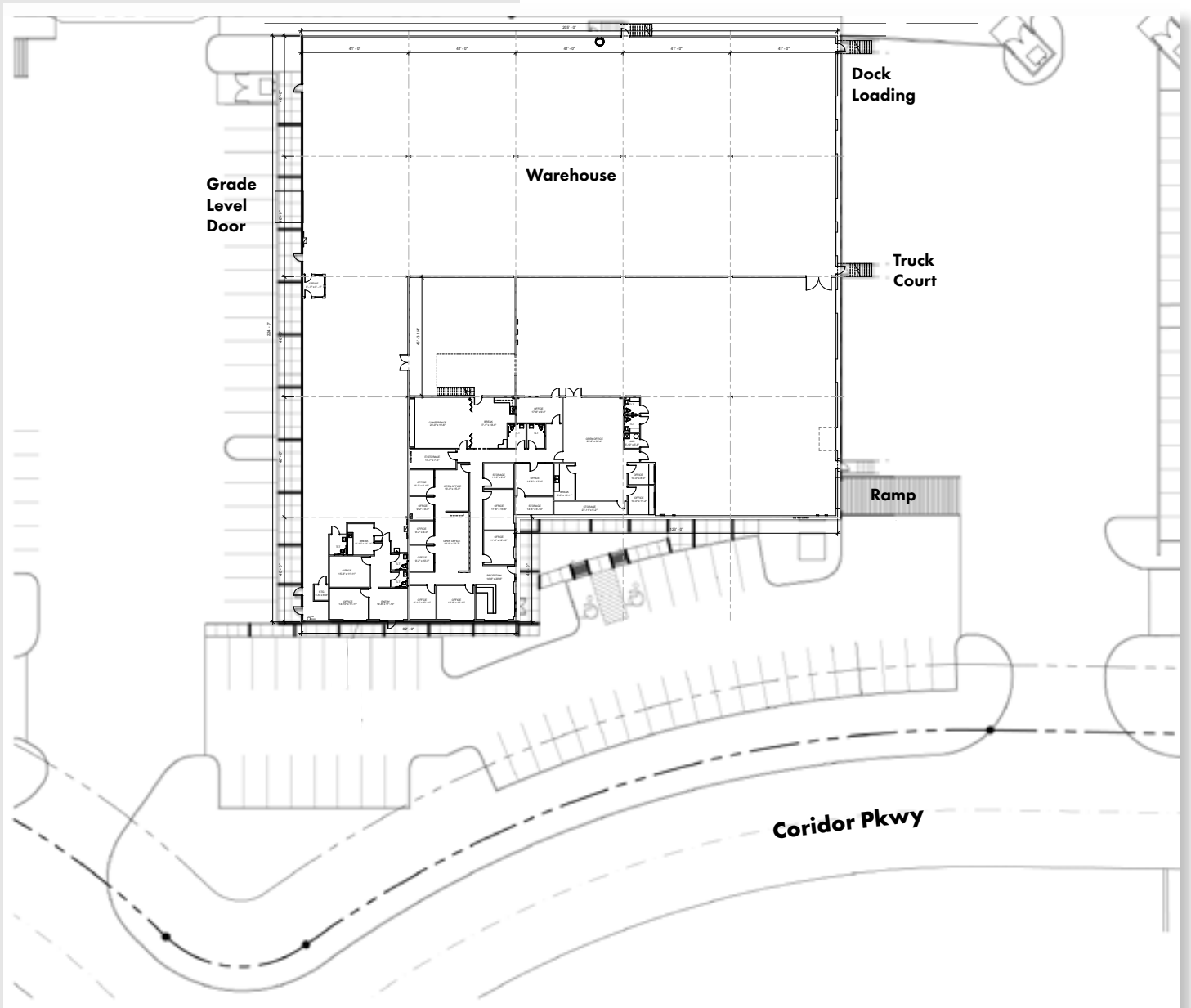
**41,000 SF Standalone  
Industrial Distribution Building**  
**Available For Sale or Lease**

## Floorplan

- 41,000 SF Available
- 60+ Parking Spaces
- ± 6,838 SF Office Space



**Download Floorplan**



# 5850

CORRIDOR PARKWAY

SCHERTZ, TEXAS 78154



  
**STREAM**

**Andrew Katzfey - 210.298.8537**  
andrew.katzfey@streamrealty.com

**Kevin Cosgrove - 210.298.8527**  
kevin.cosgrove@streamrealty.com