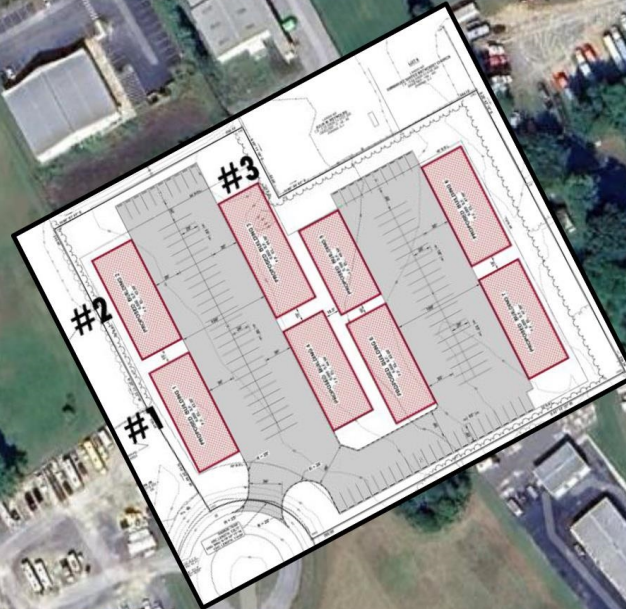


CHESWOLD BUSINESS CENTER

81 Rye Oak Ct | Cheswold, DE
R&R Commercial Realty, Inc.

FOR LEASE



Main St - 6,879 VPD

Route 13 / N Dupont Hwy - 33,517 VPD

New Warehouse Space



THE SPACE

Location	81 Rye Oak Ct Cheswold, DE 19936
County	Kent
Size	6,000 SF (1,500-6,000 sf)
Lease Type	NNN

HIGHLIGHTS

- ❖ New Warehouse Space For Lease in the New Cheswold Business Center
- ❖ Spaces vary from 1,500 - 6,000 SF in 3 Buildings with the potential for 200 SF of Office
- ❖ Located off N Dupont Hwy (Route 13) - one of Delaware's main north-south corridors
- ❖ Roughly 33,000+ households within a 15-minute drive



POPULATION

1.00 MILE	3.00 MILE	5.00 MILE
4,242	19,387	64,579

AVERAGE HOUSEHOLD INCOME

1.00 MILE	3.00 MILE	5.00 MILE
\$95,874	\$102,561	\$94,651

NUMBER OF HOUSEHOLDS

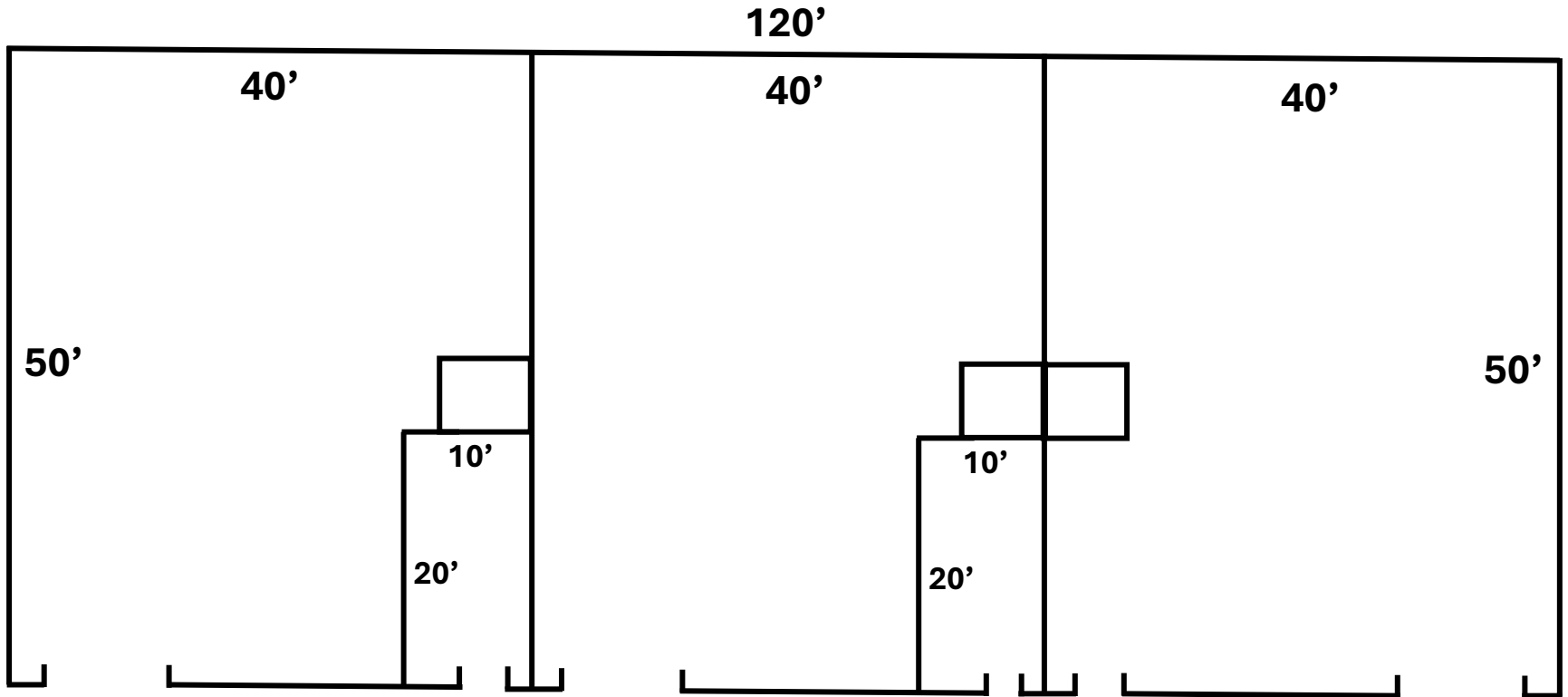
1.00 MILE	3.00 MILE	5.00 MILE
1,561	6,832	23,872



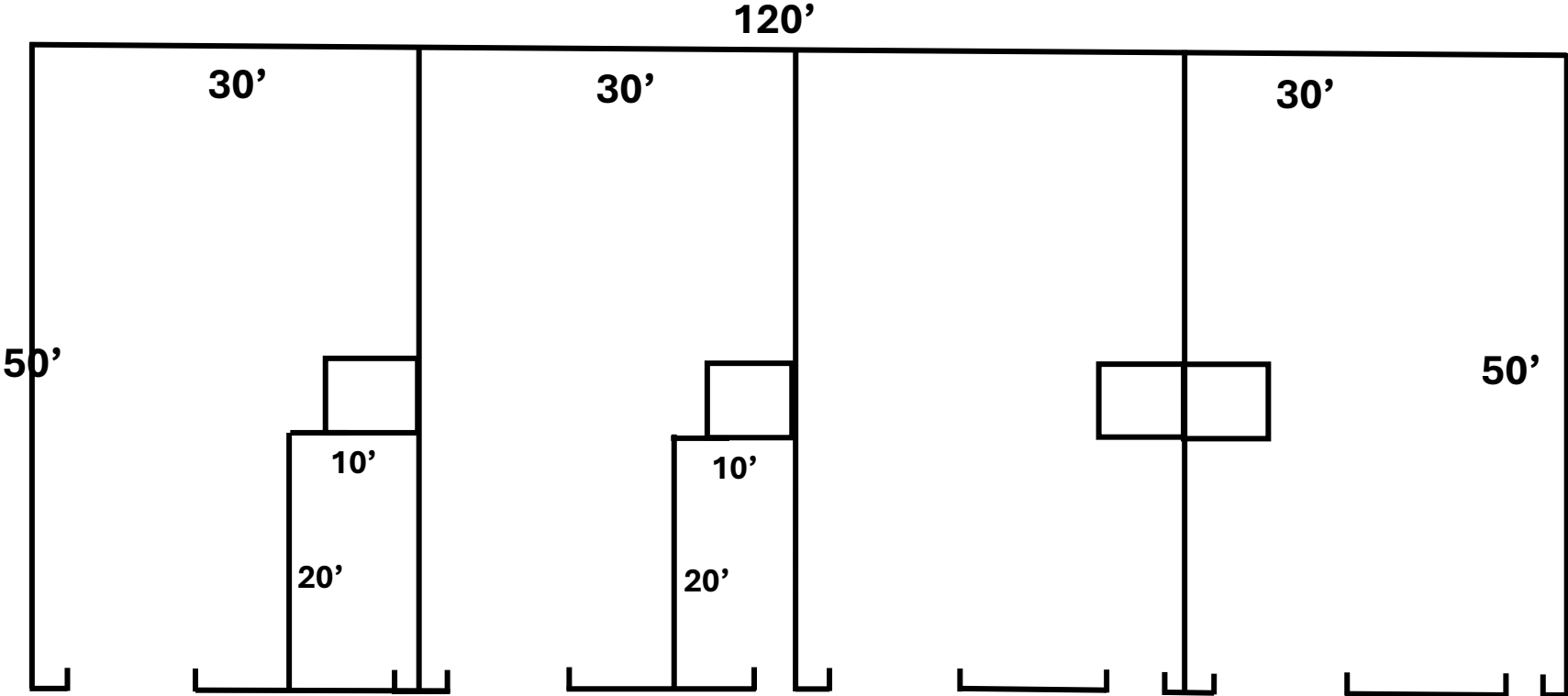
Charles Rodriguez
Broker
(302) 674-3400
ccrod1@aol.com

R&R Commercial Realty
46 S. State Street, Dover, DE 19901

Floor Plan
2,000 sf Units – 50'x40'



Floor Plan
1,500 sf Units – 50'x30'





Site



Pasco's Battery Warehouse

Main St - 6,879 VPD

Sentinel Self-Storage

Atlantic Concrete



Heritage Concrete



McGinnis Green

- AT&T
- Great Clips
- Domino's
- Miracle Ear
- Wine & Spirits

Capital City Business Park

Crossroad Christian Church



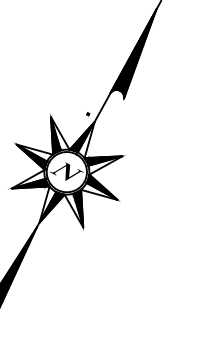
Pinewood Acres Mobile Home Park
360 Homes

Clayton Homes

North Dover Self-Storage

McKee Rd - 3,531 VPD

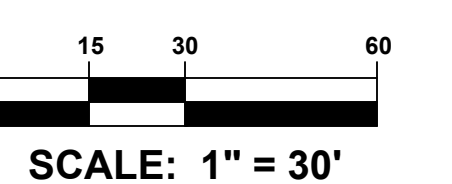
Route 13 / N Dupont Hwy - 33,577 VPD



PROJECT TITLE
LANDS OF
**CENTRAL
DELAWARE
BUSINESS
PARK**

RYE OAK CT
TOWN OF CHESWOLD
KENT COUNTY, DE

SHEET TITLE
SITE PLAN

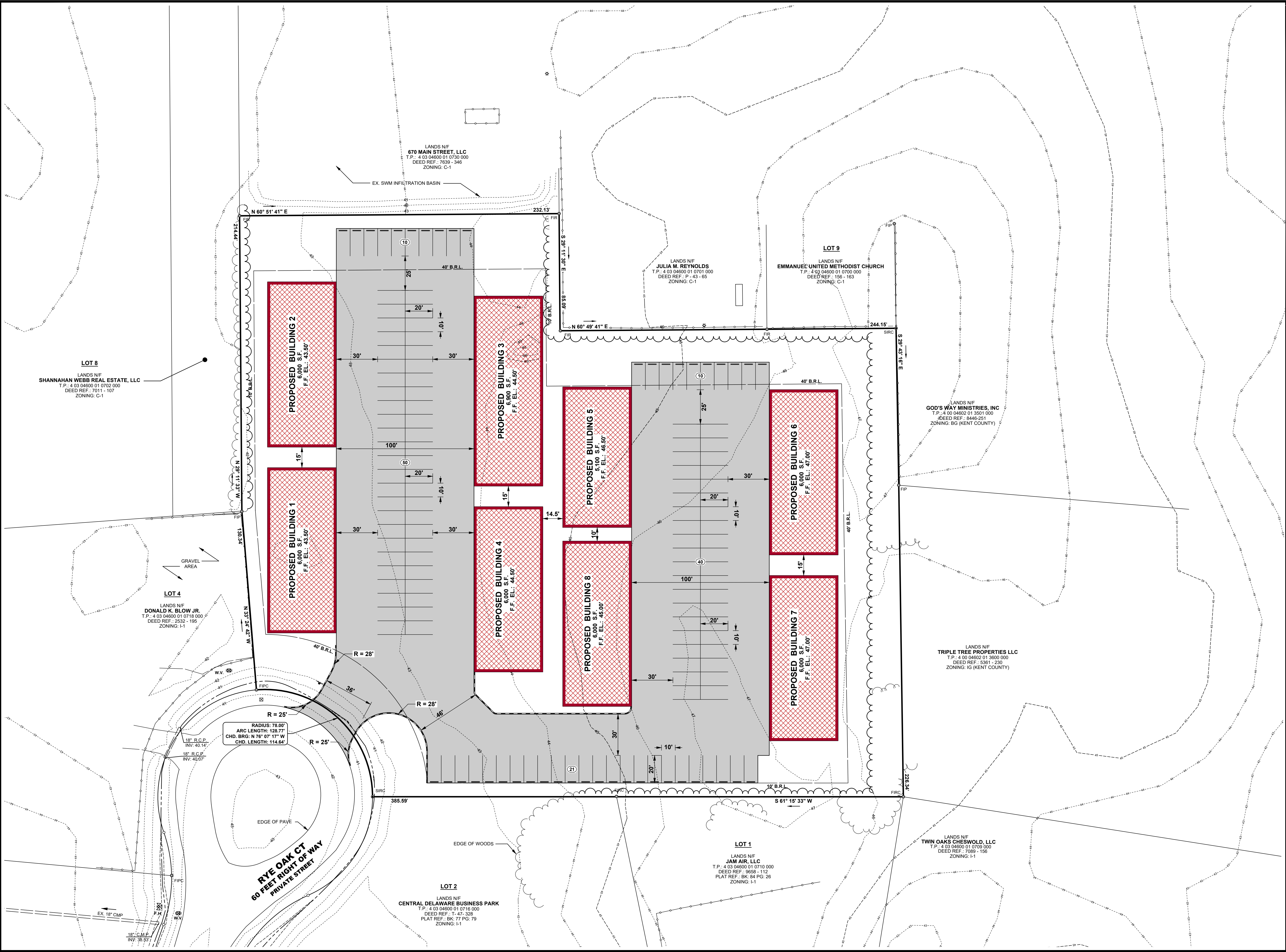


MARK	DATE	DESCRIPTION

PROJECT NO.: 2021217.00
DATE: 10/19/2021
SCALE: 1" = 30'
DRAWN BY: A.C.F. | PROJ. MGR.: J.D.R.

C-201

COPYRIGHT: 2021



Cheswold Business Center

CONFIDENTIALITY and DISCLAIMER

All information contained herein is believed to be accurate, however was obtained from third parties and R & R Commercial Realty, Inc. does not warrant as to the accuracy submitted, subject to changes or modification without notice. Listing Broker represents the sellers interest.



Exclusively Marketed by:

Charles Rodriguez
R&R Commercial Realty
Broker
(302) 674-3400
ccrod1@aol.com



<http://www.randrcommercialrealty.com>

46 S. State Street, Dover, DE 19901

powered by CREOP