



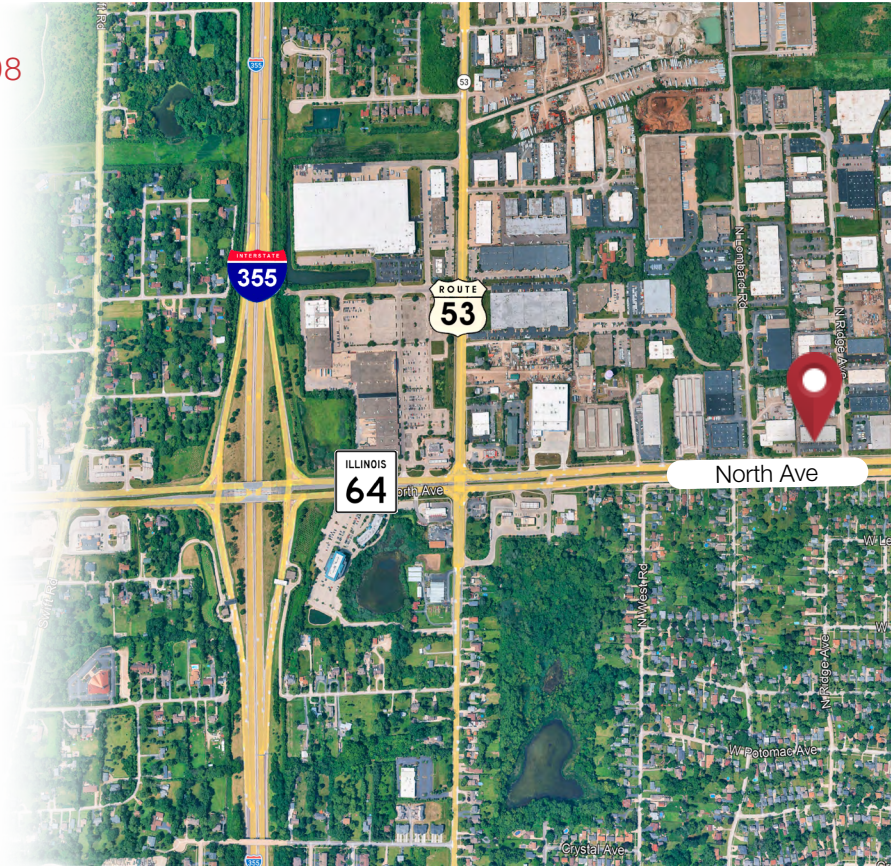
±10,750 SF

**AVAILABLE** (Multiple Units/Options)

200-212 W North Avenues, Units 202, 204, 208  
Lombard, Illinois 60148

**PROPERTY HIGHLIGHTS**

- ±10,750 SF available (Units 202, 204, 208)
  - Unit 202: ±3,000 SF, 1 loading dock/platform
  - Unit 204: ±3,500 SF, 1 loading dock/platform
  - Unit 208: ±4,250 SF, 1 loading dock/platform
- 26,000 SF building
- 14' clear height
- 3 loading docks/platforms
- Retail-type visibility on North Avenue
- Access to I-355
- 49,063 VPD on North Avenue
- Lease Price: Subject To Offer



**Contact**

**Kelly Disser**

+1 630 317 0721

kdisser@hiffman.com

**Michael J Freitag**

+1 630 693 0652

mfreitag@hiffman.com

**TJ Feeny**

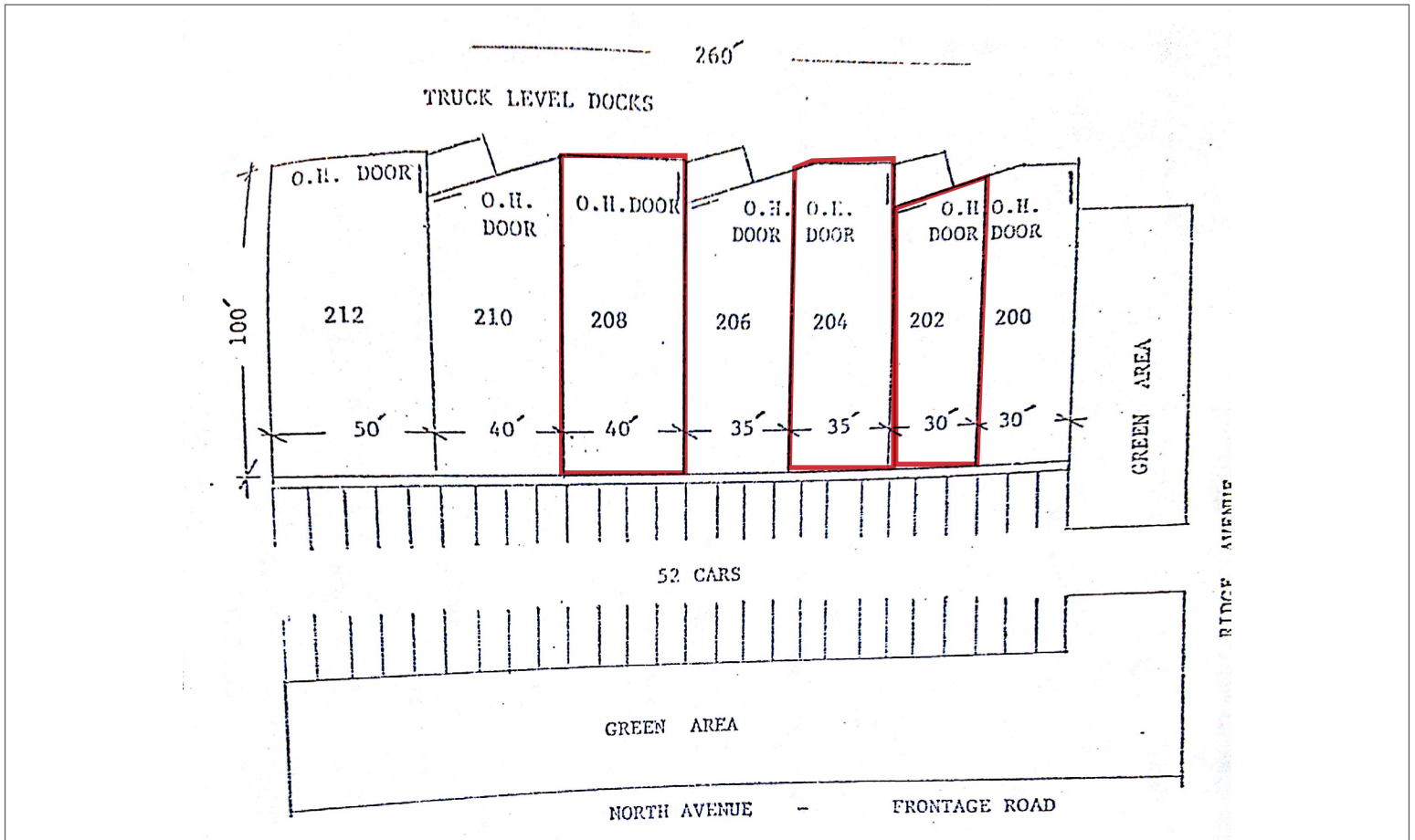
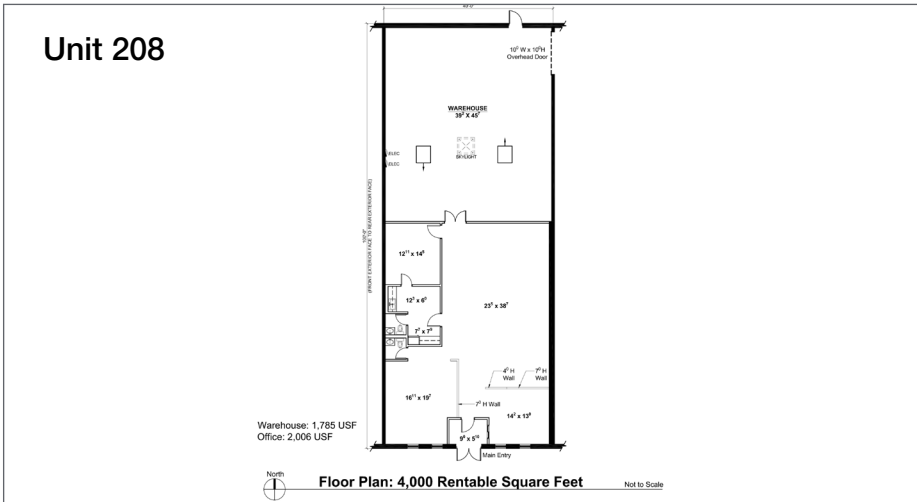
+1 630 693 0680

tfeeny@hiffman.com

**Michael Gaughan**

+1 630 359 7878

mgaughan@hiffman.com



**Contact**

Kelly Disser  
 +1 630 317 0721  
 kdisser@hiffman.com

Michael J Freitag  
 +1 630 693 0652  
 mfreitag@hiffman.com

TJ Feeney  
 +1 630 693 0680  
 tfeeney@hiffman.com

Michael Gaughan  
 +1 630 359 7878  
 mgaughan@hiffman.com