

FOR LEASE

1,795 SQUARE FOOT
OFFICE



\$18.00/Sq. Ft.
Includes Utilities

39319 Plymouth Road
LIVONIA, MICHIGAN

Professional office space located close to major freeways and downtown Plymouth. The property boasts an overabundance of common area parking for customers and employees. Monument signage also available. Please call John O'Brien for showings and additional information.

Available Space	1,795 SF - Suite 2
Year Built	1988
Lot Size	Multi-Tenant
Term	3 year minimum
Zoning	C-2 General Business
Parking	Ample
Restrooms	Common Area
Occupancy	Immediate
Utilities	Included

Burger

& COMPANY

38345 W. 10 Mile Road, Suite 100
Farmington Hills, MI 48335

248.536.2888

WWW.BURGERCOLLC.COM

John O'Brien

Principal

Cell: 248.342.8383

john@burgercollc.com

Information contained herein is deemed to be reliable but is not guaranteed and may be withdrawn at any time.



EXTERIOR SIGNAGE

Burger

& COMPANY

38345 W. 10 Mile Road, Suite 100
Farmington Hills, MI 48335

248.536.2888

WWW.BURGERCOLLC.COM

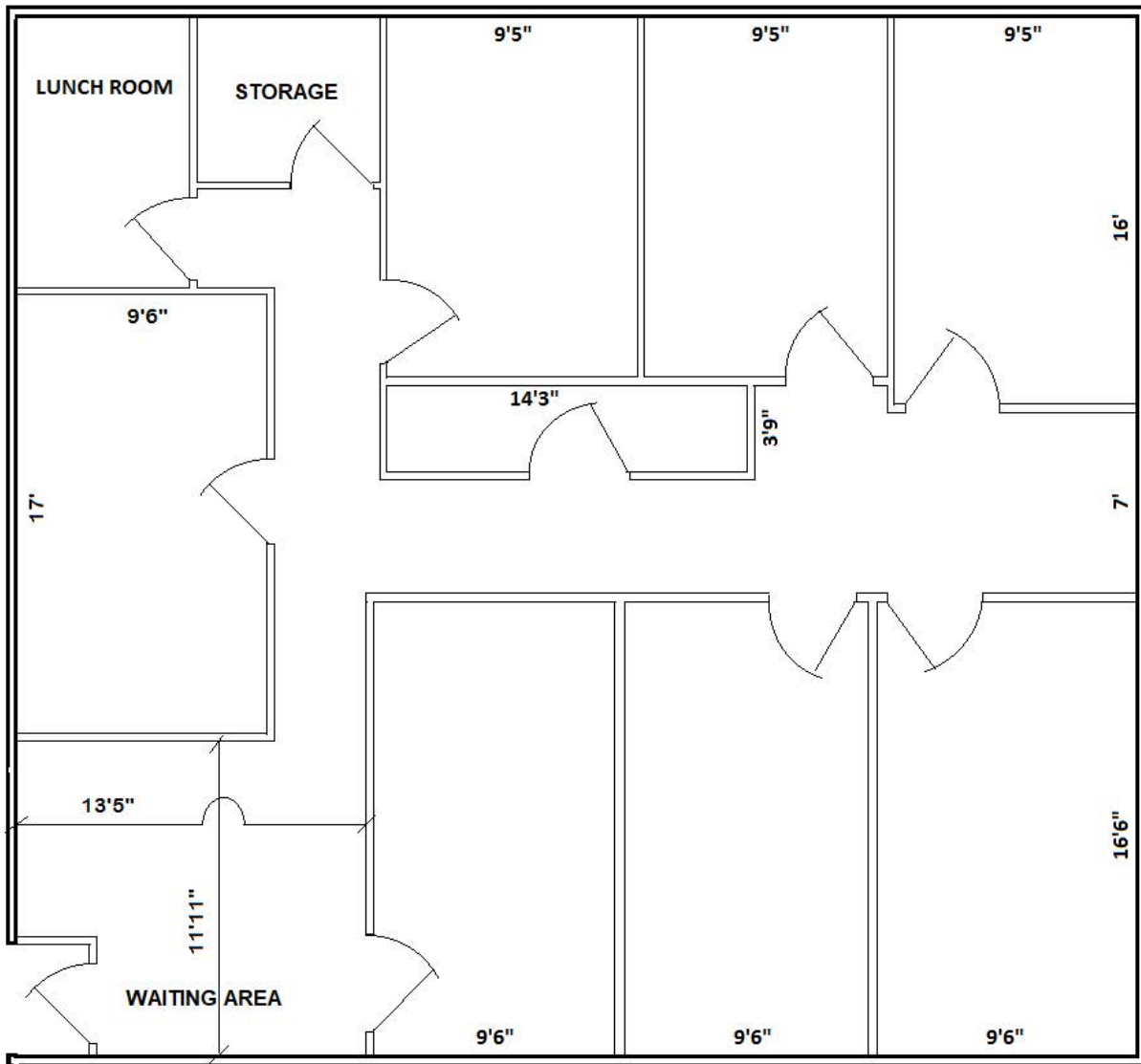
John O'Brien

Principal

Cell: 248.342.8383

john@burgercollc.com

Information contained herein is deemed to be reliable but is not guaranteed and may be withdrawn at any time.



Not to scale. Dimensions are approximate.

FLOOR PLAN



38345 W. 10 Mile Road, Suite 100
Farmington Hills, MI 48335

248.536.2888

WWW.BURGERCOLLC.COM

John O'Brien

Principal

Cell: 248.342.8383

john@burgercollc.com

Information contained herein is deemed to be reliable but is not guaranteed and may be withdrawn at any time.

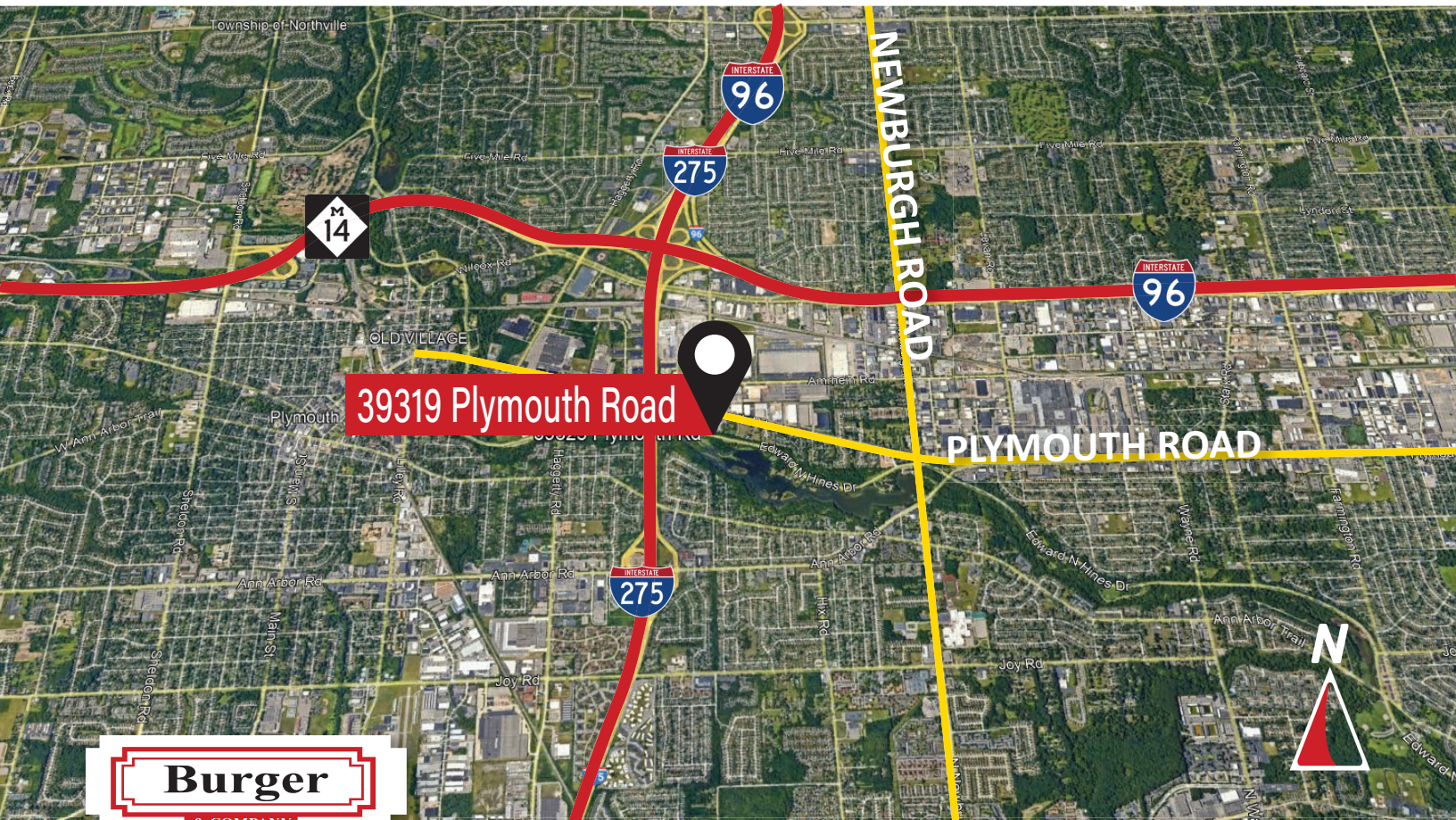


PLYMOUTH ROAD

39319 Plymouth Road

39325 Plymouth Rd

HINES DRIVE



39319 Plymouth Road

PLYMOUTH ROAD

NEWBURGH ROAD



38345 W. 10 Mile Road, Suite 100
Farmington Hills, MI 48335

248.536.2888

WWW.BURGERCOLLC.COM

John O'Brien

Principal

Cell: 248.342.8383

john@burgercollc.com

Information contained herein is deemed to be reliable but is not guaranteed and may be withdrawn at any time.