



Square Feet:

16,176



Close to
highway
404



2 truck level
& 1 drive-in
shipping
door

Aurora | 250 Don Hillock Drive, Unit 4

Precast Building with 28' Clear Ceilings For Lease

Newton Leung

Senior Vice President

Sales Representative

+1 416 318 8056

newton.leung@colliers.com

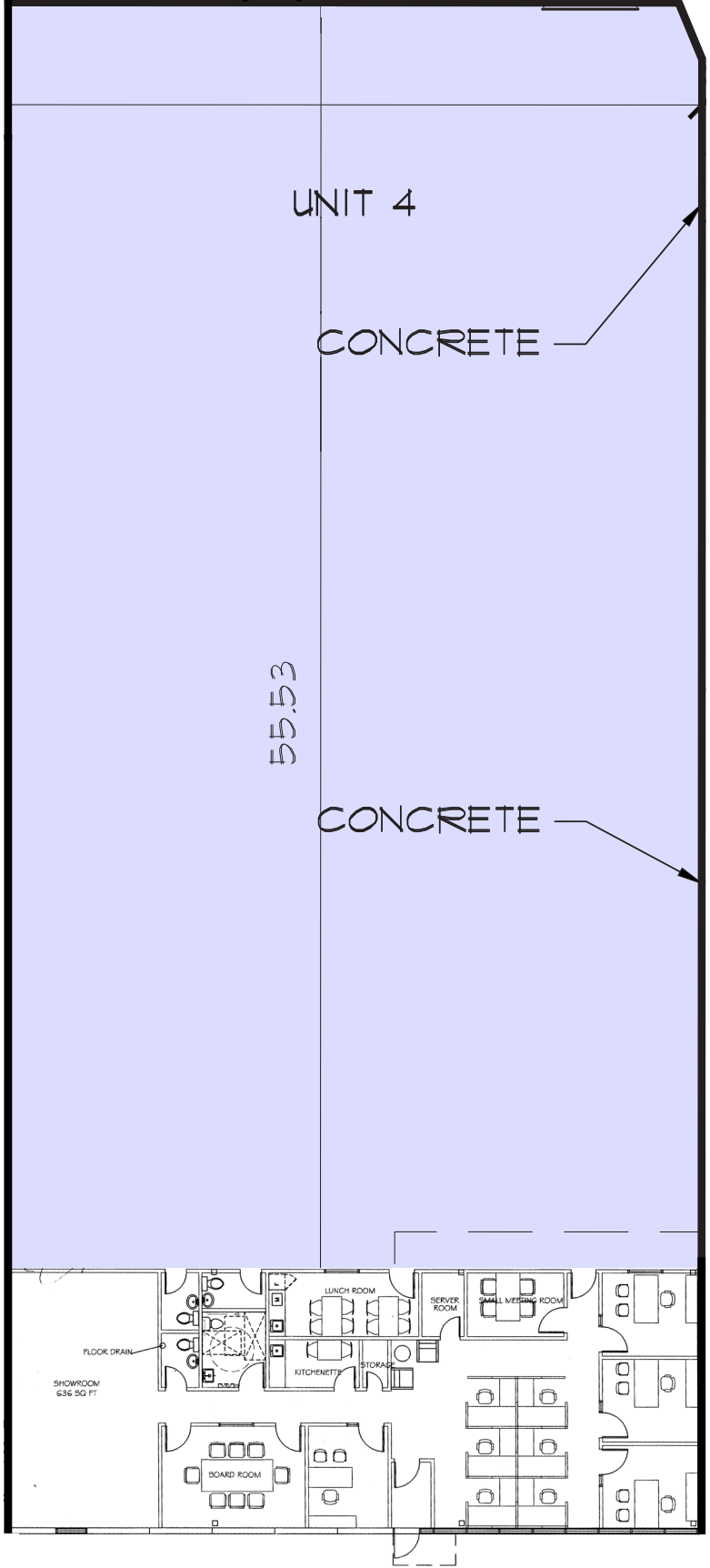
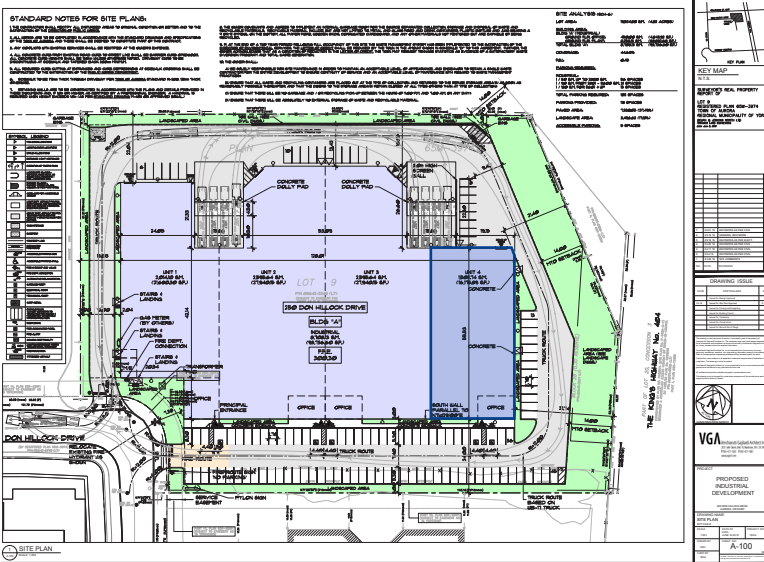
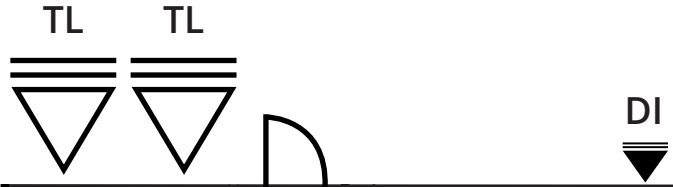
Property Overview

Address:	250 Don Hillock Drive, Unit 4, Aurora, ON L4G 0G9
Zoning:	Industrial
Main Intersection:	Highway 404/Wellington Street
Area:	16,176 SF
Office Area	17%
Clear Height:	28'
Shipping:	2 TL & 1 DI
Net Rent:	\$19/SF
TMI (2024)	\$4.75/SF
Possession:	July 1, 2024 (or earlier)
Term	36/120 months

6 year old building with high ceilings of 28' clear. Nearby to Walmart, restaurants, banks and coffee shops. Minutes from Highway 404 entrance. Excellent shipping which can accommodate 53' trailers. Additional drive-in door. Clean uses only.



Floor Plan





250 Don Hillock Drive, Unit 4 | Aurora

Newton Leung

Senior Vice President | Sales Representative
+1 416 318 8056
newton.leung@colliers.com

Copyright © 2024 Colliers International. This document has been prepared by Colliers International for advertising and general information only. Colliers International makes no guarantees, representations or warranties of any kind, expressed or implied, regarding the information including, but not limited to, warranties of content, accuracy and reliability. Any interested party should undertake their own inquiries as to the accuracy of the information. Colliers International excludes unequivocally all inferred or implied terms, conditions and warranties arising out of this document and excludes all liability for loss and damages arising there from. This publication is the copyrighted property of Colliers international and/or its licensor(s).



collierscanada.com