

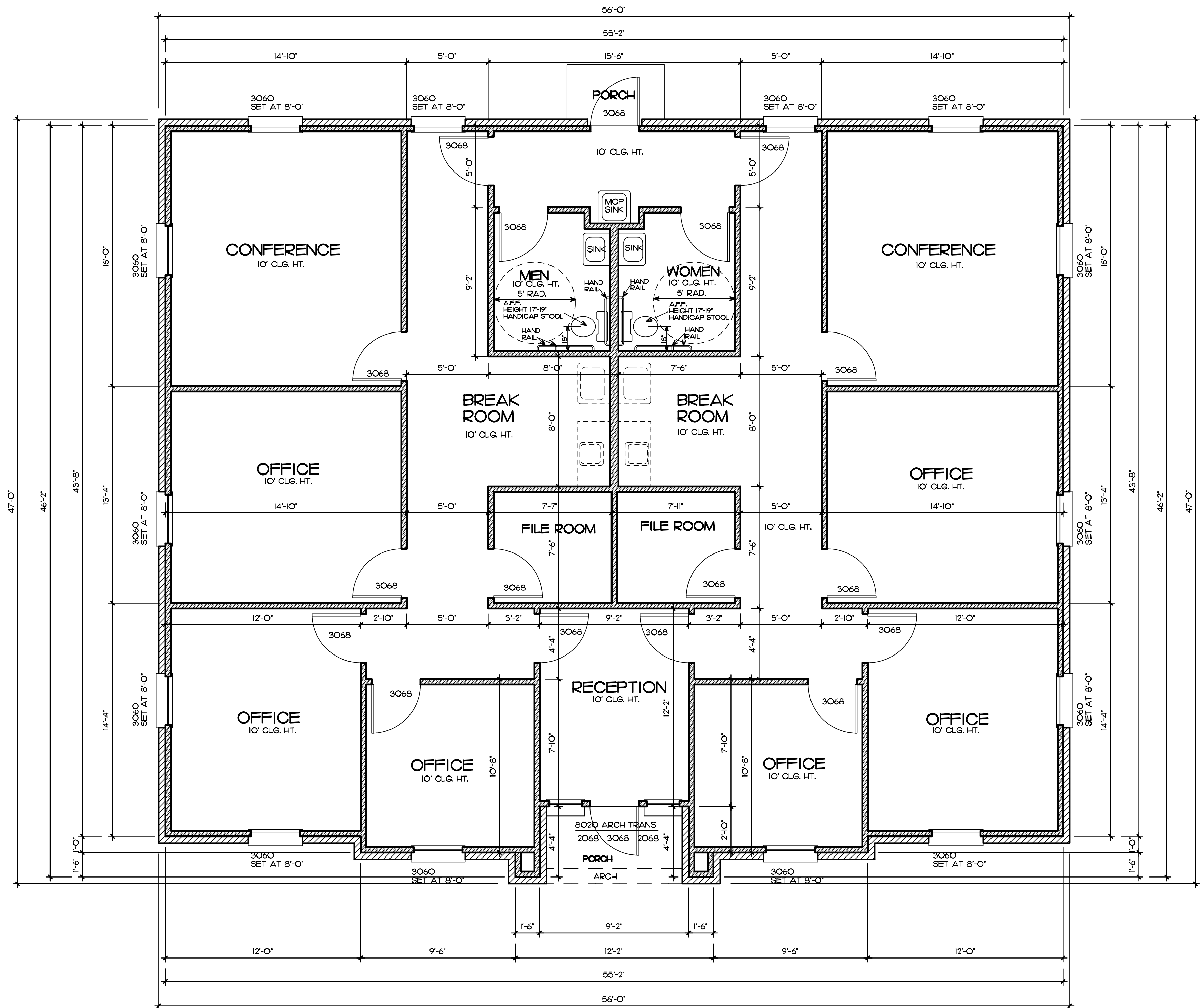
THESE PLANS ARE THE PROPERTY OF JAY HOLMAN DESIGN, LLC, AND ARE PROTECTED UNDER COMMON LAW COPYRIGHT. THESE PLANS ARE NOT TO BE REPRODUCED, CHANGED OR COPIED IN ANY MANNER WITHOUT THE WRITTEN CONSENT OF JAY HOLMAN DESIGN, LLC. BY THE USE OF THESE PLANS, THE USER HEREBY GRANTS A LICENSE FOR A ONE TIME USE OF THIS PLAN. VERIFY ALL CONDITIONS AND DIMENSIONS AT THE JOB SITE AND NOTIFY THE DESIGNER OF ANY DIMENSIONAL ERRORS, OMISSIONS OR DISCREPANCIES BEFORE BEGINNING OR FABRICATING ANY WORK. DO NOT SCALE THESE DRAWINGS. 7/28/2016

NEAL MCGEE HOMES, INC
LOT 10 BLOCK 1 - COMMERCE PARK I
8900 SILVER HILL DRIVE

JAY HOLMAN
DESIGN AND DRAFTING
2800 COLLIERNE PLACE SUITE 3
EDMOND OKLAHOMA 405.715.1932

NOTES:

TOTAL FRAME
2412 SF
TOTAL VENEER
2500 SF



FLOOR PLAN
SCALE 1/4" = 1'-0"