



FOR LEASE

ONE PACIFIC BUILDING

621 PACIFIC AVE | TACOMA, WA

NAI Puget Sound
Properties



PROPERTY OVERVIEW

Tacoma's Premier Landmark, the One Pacific building was built in 1889 as headquarters for the Northern Pacific Railroad, and beautifully renovated in 1984, keeping the classic art-deco design. **The property is now under new ownership and management.** Located in the bustling north historic corridor of downtown Tacoma, the building offers gorgeous office space with abundant natural light, large hallways, spacious ceiling heights, water and mountain views, secured access, plus available on-site parking, and retail amenities right outside the front door.

PROPERTY FEATURES

ONE PACIFIC BUILDING

- Historic, classic office space with flexible sizes from 499 - 6,560 RSF
- Upscale Executive Suites and top floor Penthouse available
- Move-in ready
- On-site parking available
- Immediate freeway access
- Secured building
- Abundant retail amenities within walking distance
- Sweeping views of water, mountain, and downtown Tacoma
- Adjacent Firefighters Park
- New ownership and management

LEASE RATE

\$26.00 - \$28.00 PSF, Gross



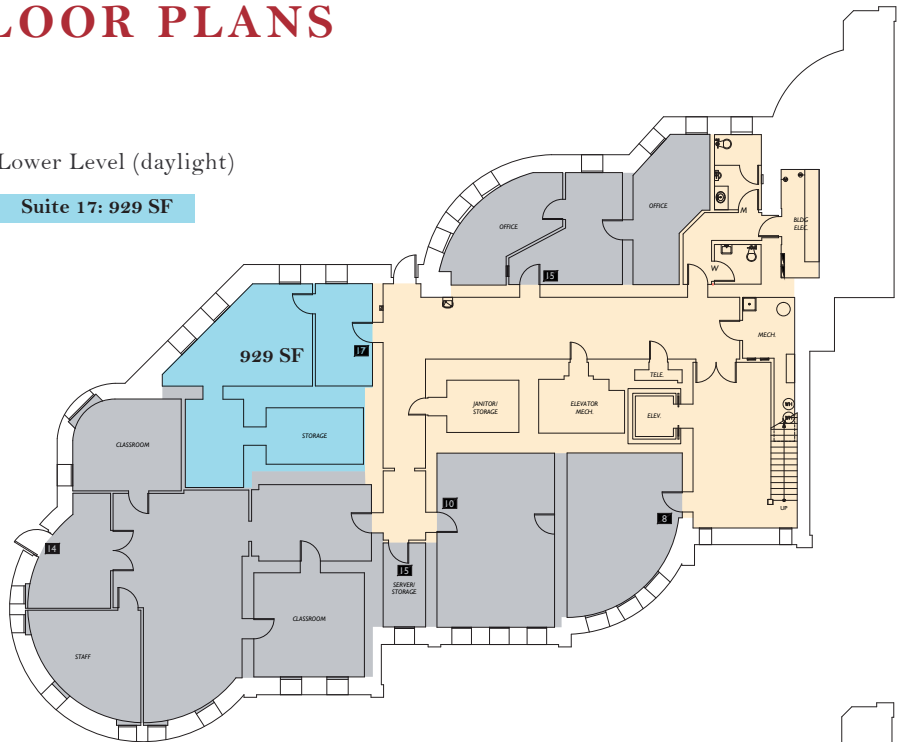


THE INFORMATION CONTAINED HEREIN HAS BEEN GIVEN TO US BY THE OWNER OF THE PROPERTY OR OTHER SOURCES WE DEEM RELIABLE, WE HAVE NO REASON TO DOUBT ITS ACCURACY, BUT WE DO NOT GUARANTEE IT. ALL INFORMATION SHOULD BE VERIFIED PRIOR TO PURCHASE OR LEASE.

FLOOR PLANS

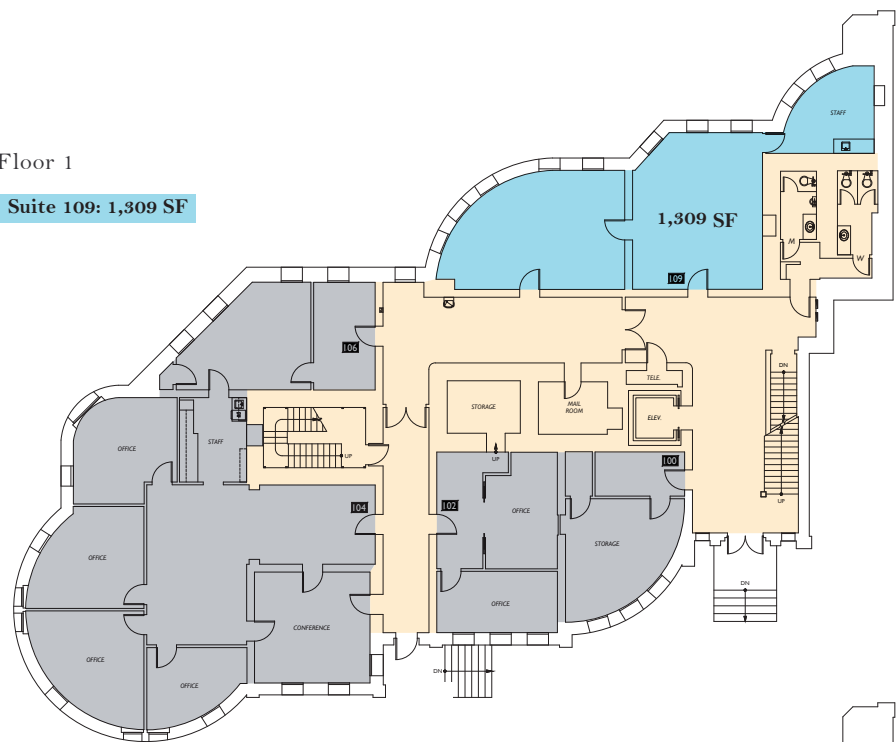
Lower Level (daylight)

Suite 17: 929 SF



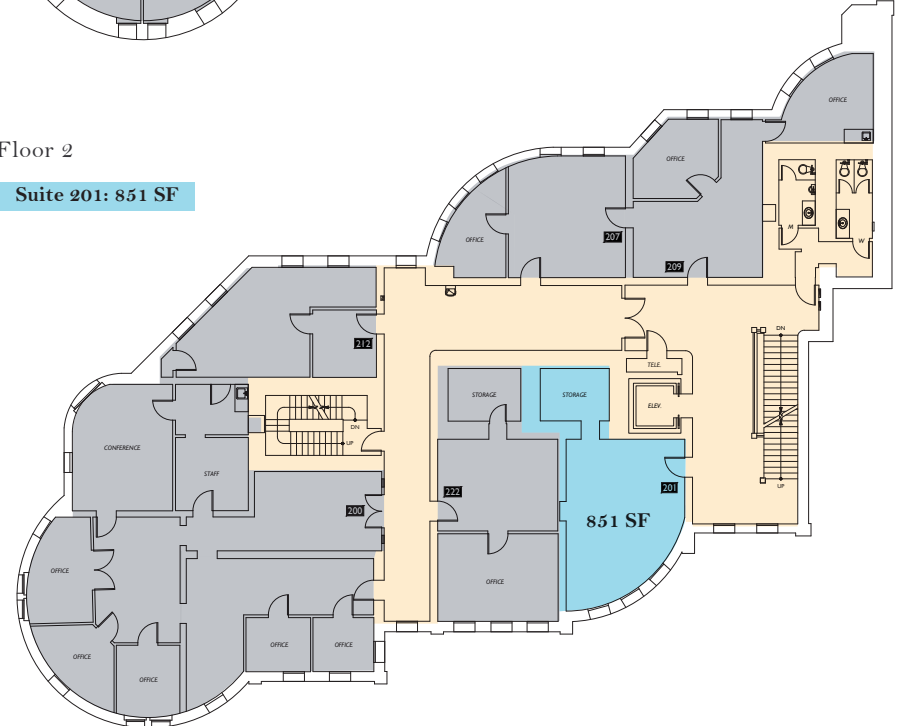
Floor 1

Suite 109: 1,309 SF



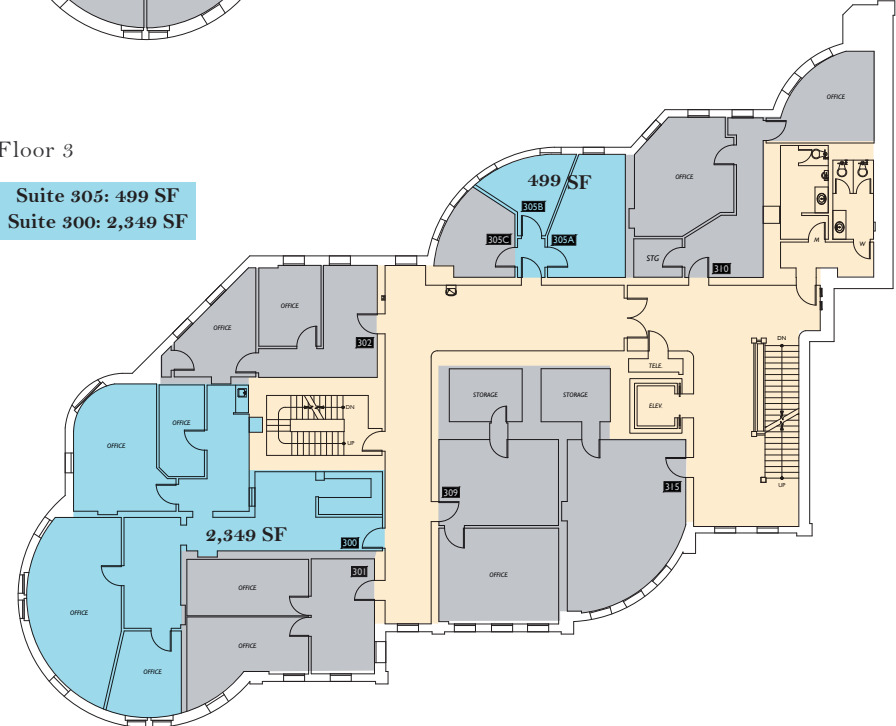
Floor 2

Suite 201: 851 SF



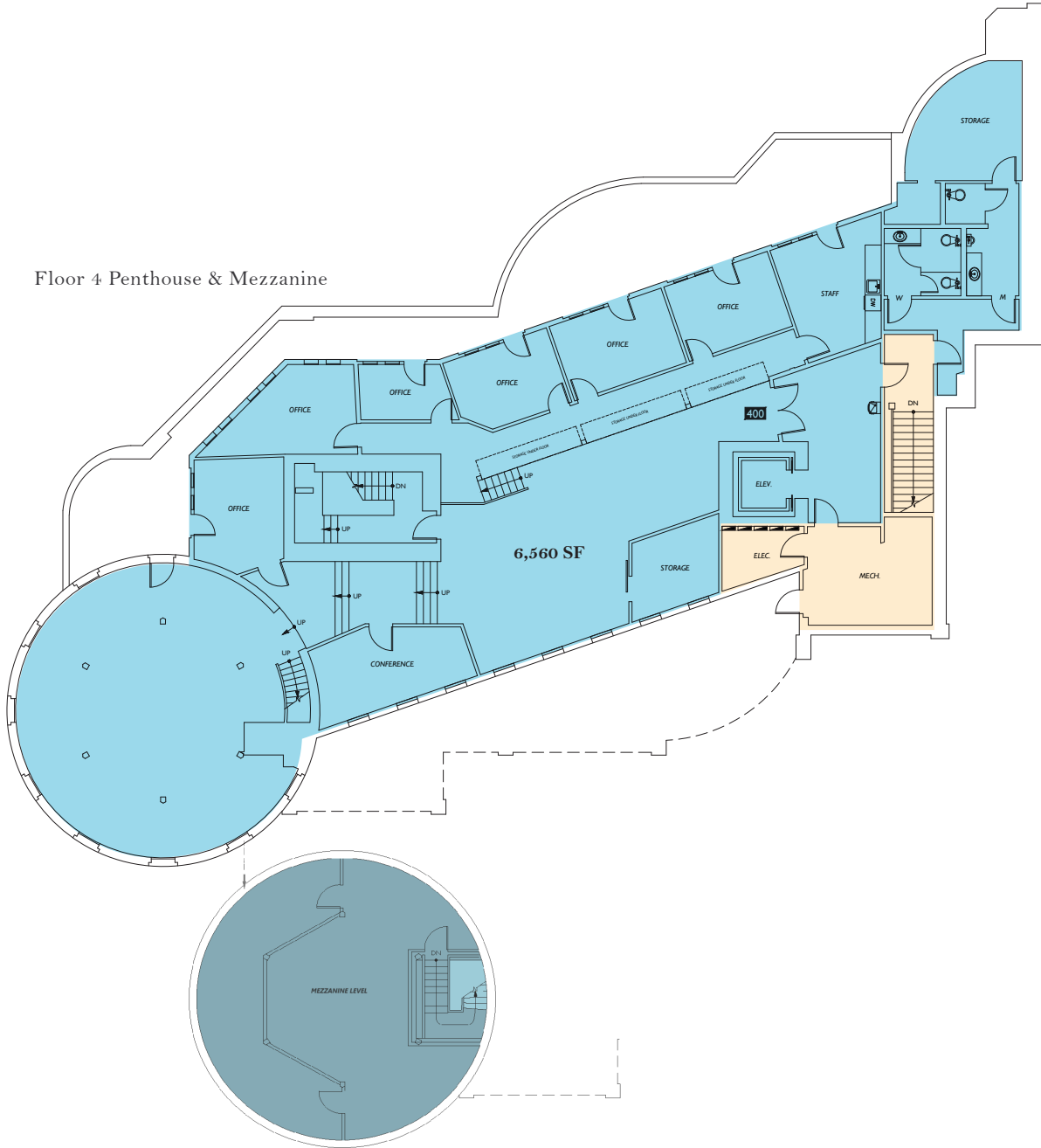
Floor 3

Suite 305: 499 SF
Suite 300: 2,349 SF



FLOOR PLANS

Floor 4 Penthouse & Mezzanine



S View Adjacent to Parking Lot



DEMOGRAPHICS

DEMOGRAPHIC DATA	1 MILE	3 MILE	5 MILE
Population	16,631	85,714	257,323
Average Household Income	\$84,092	\$106,701	\$108,770
Businesses	1,915	4,689	8,969
Employees	37,655	79,402	133,538



- ## NEARBY
1. Wright Park
 2. Firemans Park
 3. Theater District / Antique Row
 4. Farmers Market
 5. Tacoma Convention Center
 6. Tacoma Art Museum
 7. Museum of Glass
 8. St. Joseph's Hospital
 9. University of Washington
 10. Union Station / Federal Courthouse
 11. Greater Tacoma Convention Center
 12. Hotel Murano

THE INFORMATION CONTAINED HEREIN HAS BEEN GIVEN TO US BY THE OWNER OF THE PROPERTY OR OTHER SOURCES WE DEEM RELIABLE, WE HAVE NO REASON TO DOUBT ITS ACCURACY, BUT WE DO NOT GUARANTEE IT. ALL INFORMATION SHOULD BE VERIFIED PRIOR TO PURCHASE OR LEASE.

EXCLUSIVELY MARKETED BY

Andrea Peterson

Vice President
+1 253 203 1329
apeterson@nai-pp.com

Kim Marvik

Partner
+1 425 586 5628
kmarvik@nai-pp.com

