

CBRE

For Lease

Riverside Medical Arts Complex
Up to 2,869 SF Available

700 W. Lea Boulevard, Wilmington, DE



Site Highlights



BUILDING SIZE:
35,198 SF



AVAILABLE SF: 2,869
(2 MEDICAL SUITES)



PARKING: TOTAL OF 88 PARKING SPACES. PARKING IS AVAILABLE ON THE STREET ADJACENT TO BUILDING



ZONING: 26R-2



ELEVATORS: 2 (SIZED FOR MEDICAL)



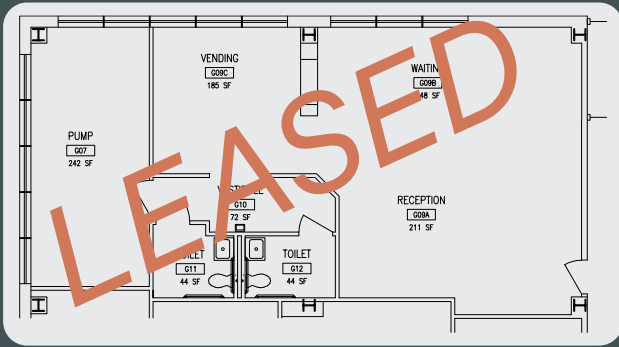
QUOTED RENT: \$17.50 PER SF (INCLUSIVE OF ELECTRIC)



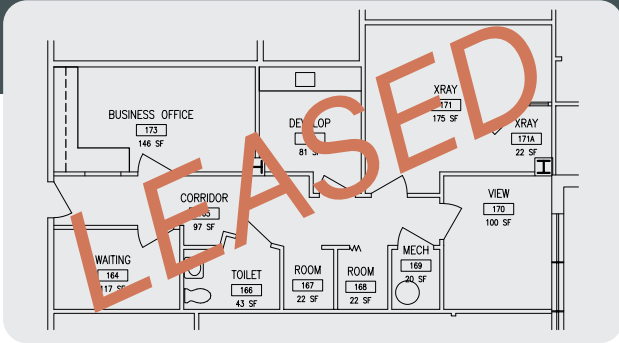
Property Details

Strategically situated in Wilmington, DE, Riverside Medical is in a prime location that combines convenience and accessibility. Just minutes from major highways, including I-95 and I-495, this property ensures seamless commuting for both employees and clients. The surrounding area boasts a vibrant mix of dining, shopping, and recreational options, providing ample opportunities for networking and collaboration.

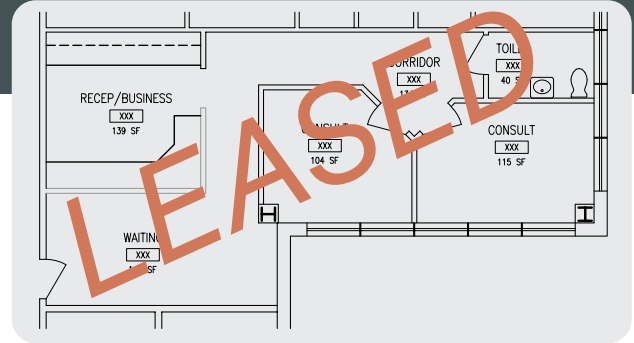
Availabilities



SUITE G1: 1,229 SF



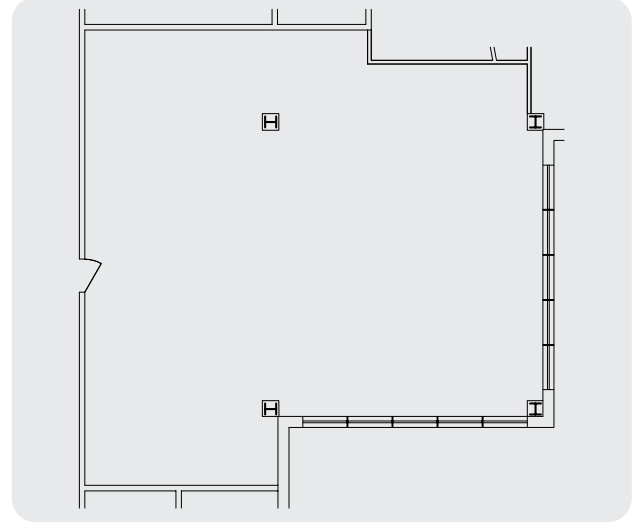
SUITE 104: 868 SF



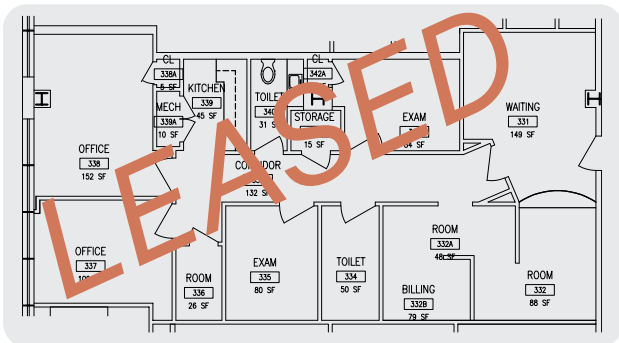
SUITE 105: 748 SF



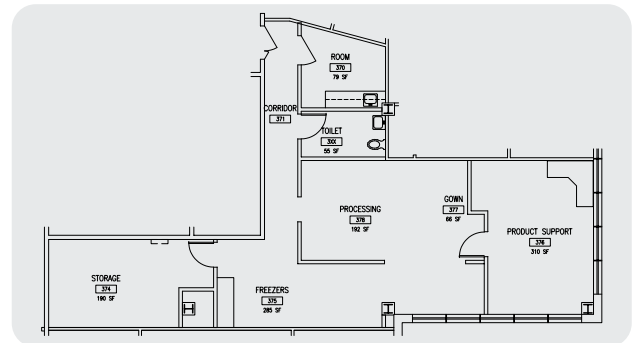
SUITE 202: 1,922 SF



SUITE 206: 1,558 SF



SUITE 301: 1,183 SF



SUITE 304: 1,311 SF



CONTACT US

700 W. Lea Boulevard, Wilmington, DE

John Kaczowka
Senior Vice President
+1 302 661 6709
john.kaczowka@cbre.com

Thomas Stone
First Vice President
+1 610 251 5123
thomas.stone@cbre.com

Dan Dagit
Senior Vice President
+1 610 251 5130
dan.dagit@cbre.com

CBRE

© 2025 CBRE, Inc. All rights reserved. This information has been obtained from sources believed reliable but has not been verified for accuracy or completeness. CBRE, Inc. makes no guarantee, representation or warranty and accepts no responsibility or liability as to the accuracy, completeness, or reliability of the information contained herein. You should conduct a careful, independent investigation of the property and verify all information. Any reliance on this information is solely at your own risk. CBRE and the CBRE logo are service marks of CBRE, Inc. All other marks displayed on this document are the property of their respective owners, and the use of such marks does not imply any affiliation with or endorsement of CBRE. Photos herein are the property of their respective owners. Use of these images without the express written consent of the owner is prohibited.