



CHARMING DUPLEX IN PRIME WOODLAND HEIGHTS LOCATION

FOREST HILL PARK AREA

3105 SEMMES AVE, RICHMOND, VA 23225

START AT

\$669,950

TYPE

MULTI-FAMILY DUPLEX

SIZE

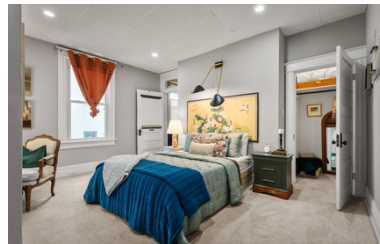
2,495 SQFT

BUILT IN

1922



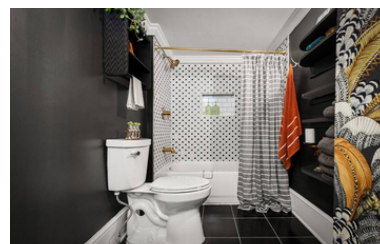
LIVING ROOM



BEDROOM



KITCHEN ROOM



BATHROOM

UNIT OVERVIEW

Beautifully maintained duplex offering two spacious 2-bedroom units, blending original charm with modern comforts. Enjoy a large wrap-around front porch, an upstairs balcony, and unbeatable proximity to Forest Hill Park. Currently operating as a successful Airbnb, this property offers both a comfortable residence and excellent investment potential.

DUPLEX OFFERS



4



Bedrooms (2 per villa) Off-Street Parking

CONTACT COLBY KAY



804.293.2621



COLBYKAY@ICONCOMMERCIALVA.COM