

# 15,040± SF Office/Warehouse For Lease



5475 Tulane Drive, Atlanta, GA

## Property Highlights

- ±15,040 SF industrial facility located in the Fulton Industrial District, one of Atlanta's most established and accessible distribution hubs
- 2 dock-high doors and 1 ramped drive-in door for flexible loading and distribution options
- Renovated office area with modern finishes—move-in ready for immediate operations
- Upgraded warehouse lighting providing bright, energy-efficient workspace
- 20' clear ceiling height ideal for racking, storage, and manufacturing uses
- Strategic location less than 2 miles from I-20 and minutes to I-285, offering convenient access to Downtown Atlanta, Hartsfield-Jackson International Airport, and major logistics corridors
- Situated among national industrial users within a proven business park environment
- Ample parking and truck court space to accommodate shipping and employee needs
- Competitive lease rate in one of Atlanta's most in-demand industrial submarkets

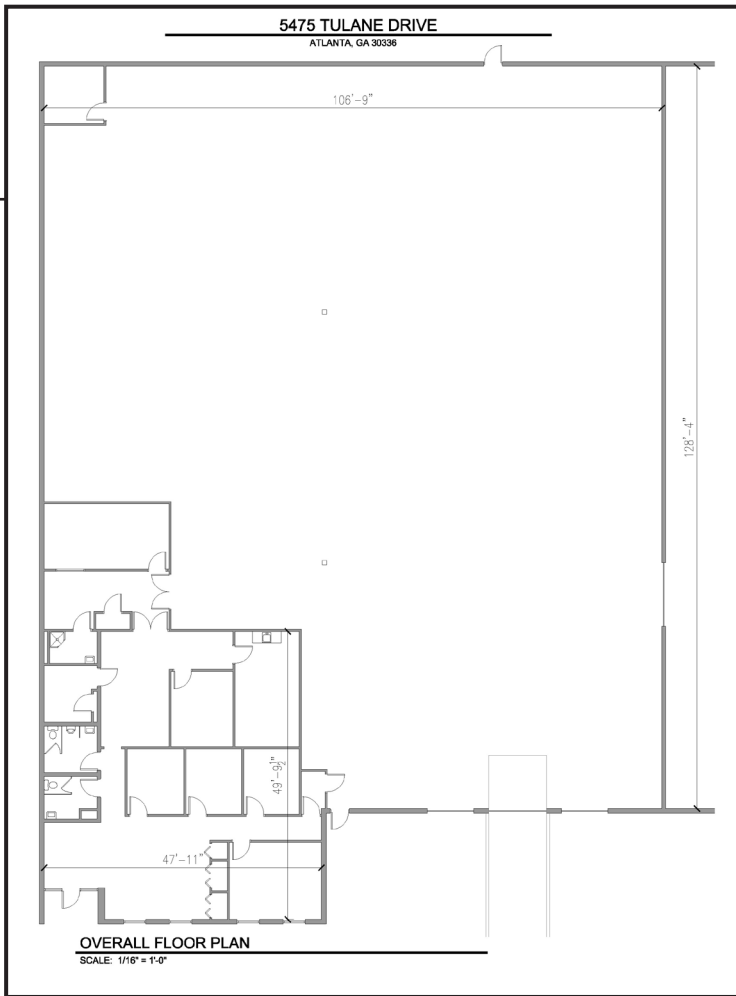
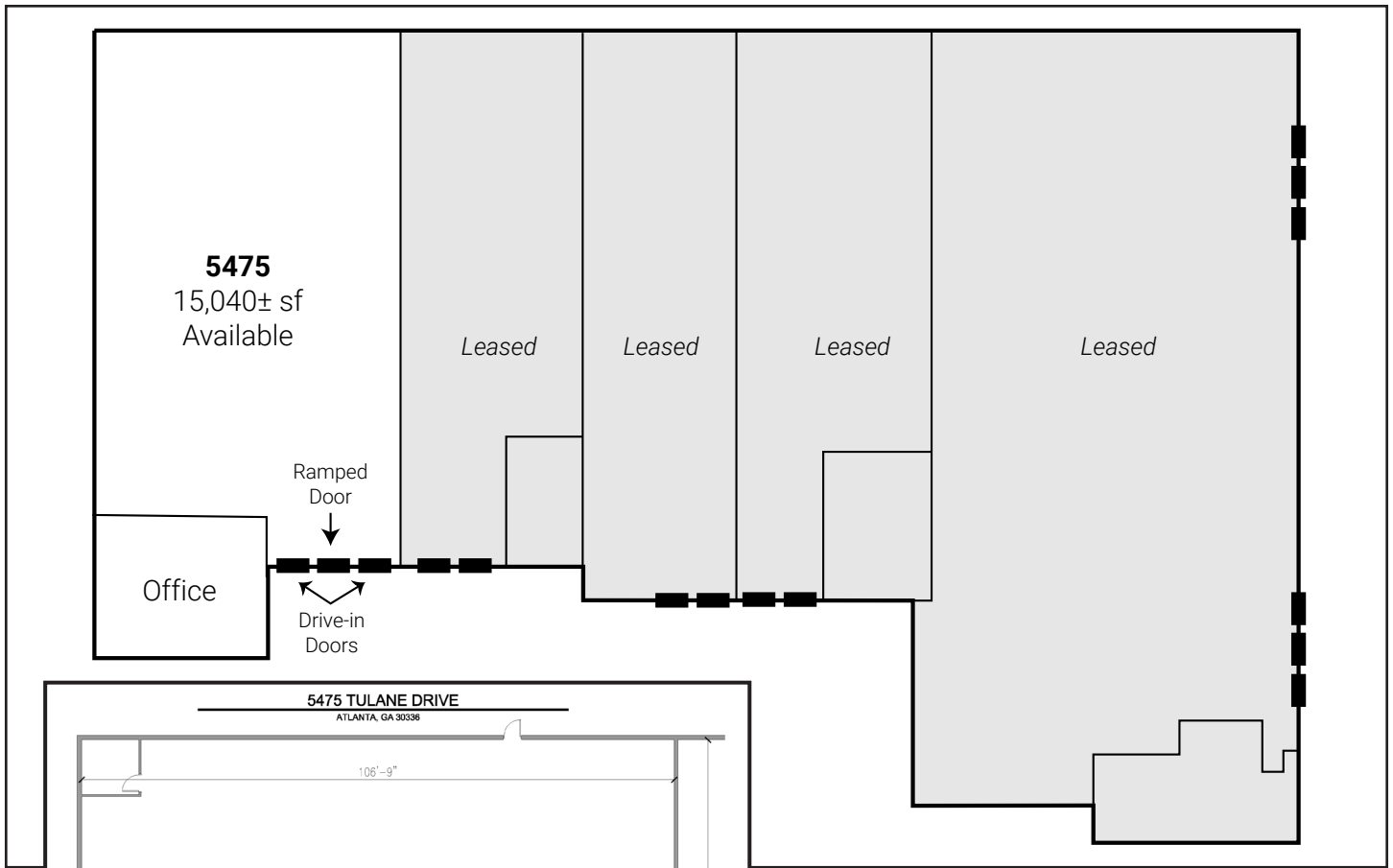
No warranty or representation, express or implied, is made as to the accuracy of the information contained herein, and same is subject to errors, omissions, change of price, rental or other conditions, withdrawal without notice, and to any special listing conditions, imposed by our principals.

### Broker contact:

**Peyton McWhirter, SIOR**  
(404) 754-8519  
pmm@mcwrealty.com

**McWhirter Realty Partners, LLC**  
294 Intersate North Circle, SE  
Building 2, Suite 150  
Atlanta, GA 30339  
(770) 955-2000

mcwrealty.com



**Peyton McWhirter, SIOR**  
(404) 754-8519  
nrvc@mcwrealty.com

**McWhirter Realty Partners, LLC**  
294 Intersate North Circle, SE  
Building 2, Suite 150  
Atlanta, GA 30339  
770.955.2000  
mcwrealty.com



No warranty or representation, express or implied, is made as to the accuracy of the information contained herein, and same is subject to errors, omissions, change of price, rental or other conditions, withdrawal without notice, and to any special listing conditions, imposed by our principals.

Commercial Real Estate Since 1980