

600S'W

600 SOUTH STREET WEST, RAYNHAM, MA 02767

11,000 SF AVAILABLE



WAREHOUSE,
STORAGE &
SHOWROOM
SPACE

LOCATED ON ROUTE 44 WITH IMMEDIATE ACCESS TO ROUTE 24 VIA EXIT 20



Immediate Access
to Route 24



36 miles
from Boston



Heavy Parking
Available

NEWMARK

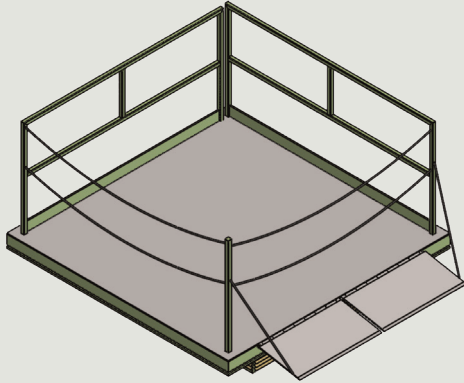
PROPERTY SPECIFICATIONS

Available SF	11,000 SF
Clear Height	14'6" – 16'9"
Column Spacing	39'x40' & 34'x40'
Loading	1 grade-level roll-up door
Car Parking	Heavy Parking Available
Lighting	LED light fixtures
Power	600 Amps 480/277 Volt
Fire Protection	ESFR
Construction Type	Pre-cast concrete
Floor Slab	6" unreinforced
Utilities	
Electricity	National Grid
Water	Town of Raynham
Sewer	Town of Raynham

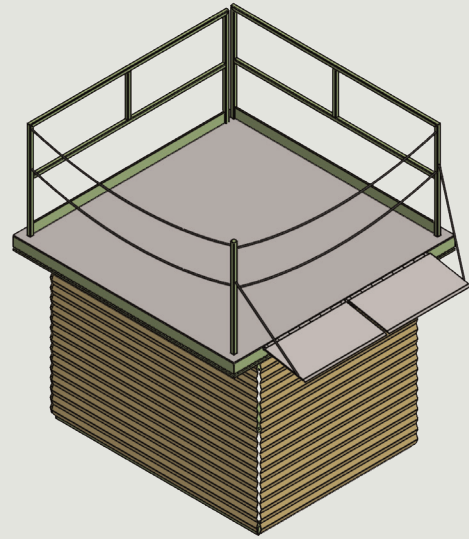


600 SOUTH STREET WEST, RAYNHAM, MA 02767

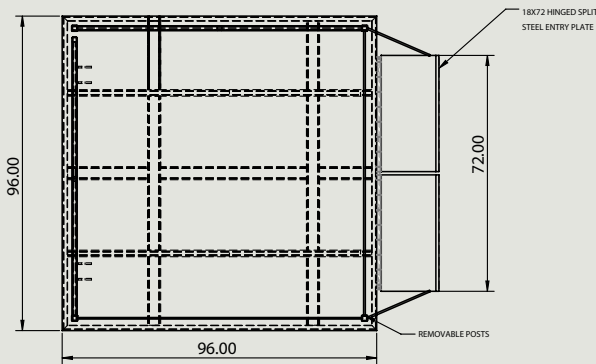
POTENTIAL LIFT/JACK SYSTEM SOLUTION



ISOMETRIC VIEW
(Lowered Position)



ISOMETRIC VIEW
(Raised Position)



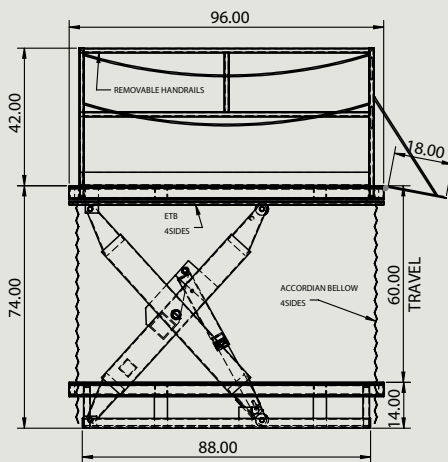
PLAN VIEW

Capacity

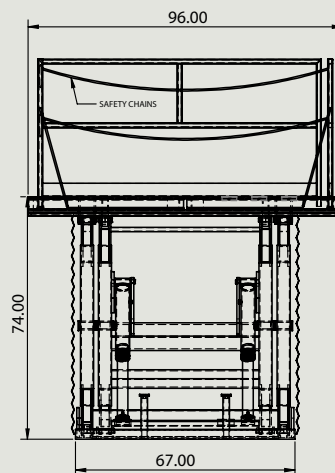
8,000lbs Evenly Distributed Load;
40,000lbs Roll Over Capacity In
Down Position

Power Pack

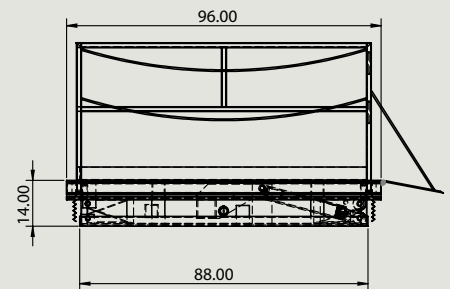
Remote 5hp, 460v/3ph/60hz,
24vac Secondary



END VIEW
(Raised Position)



SIDE VIEW
(Raised Position)



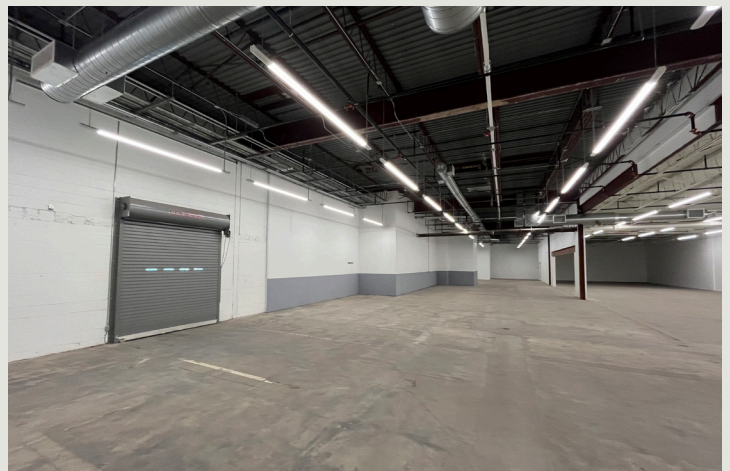
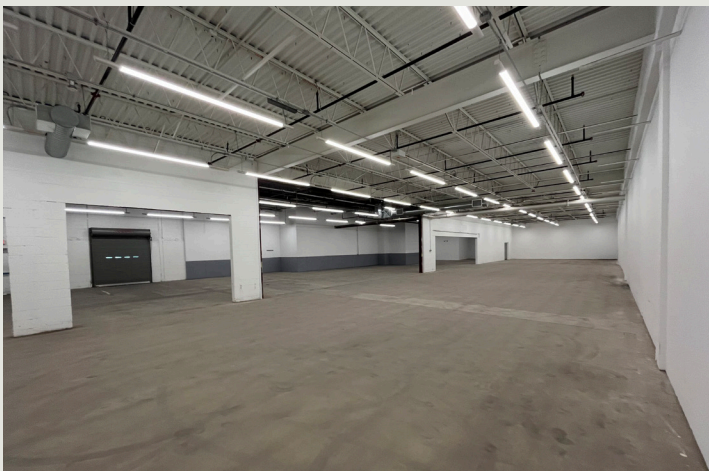
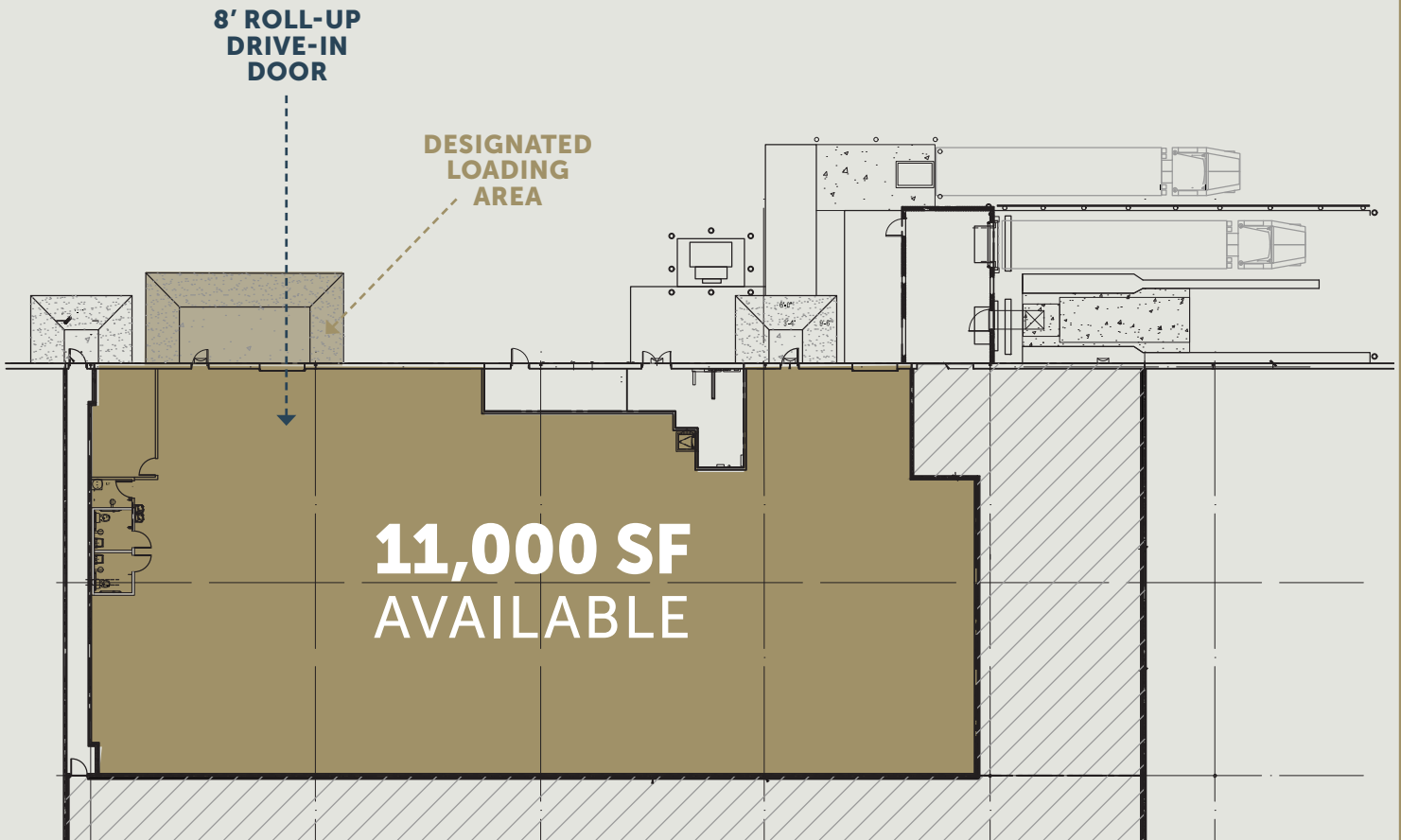
SIDE VIEW
(Lowered Position)

600 SOUTH STREET WEST, RAYNHAM, MA 02767

SITE PLAN



11,000 SF AVAILABLE SPACE



600 SOUTH STREET WEST, RAYNHAM, MA 02767

NEWMARK

SITE PLAN



11,000 SF AVAILABLE SPACE

NEW STATE HIGHWAY

44

8' ROLL-UP
DRIVE-IN
DOOR

**11,000 SF
AVAILABLE**

**HEAVY PARKING
AVAILABLE**

SOUTH STREET WEST

600 SOUTH STREET WEST, RAYNHAM, MA 02767

NEWMARK



600SSW



PARAMOUNT DRIVE



ACCESS TO

ROUTE 24	0.4 MILE
INTERSTATE 495	3.5 MILES
INTERSTATE 95	17 MILES
BOSTON	33 MILES

600 SOUTH STREET WEST, RAYNHAM, MA 02767

Ed Jarosz
Executive Managing Director
 617-863-8529
 ed.jarosz@nmrk.com

Michael Malinconico
Associate Director
 617-863-8428
 michael.malinconico@nmrk.com

Tony Coskren
Executive Managing Director
 617-863-8536
 tony.coskren@nmrk.com

Rick Schuhwerk
Executive Managing Director
 617-863-8533
 rick.schuhwerk@nmrk.com

Brian Pinch
Senior Managing Director
 617-863-8538
 brian.pinch@nmrk.com

Allie Percoco
Associate Director
 617-863-8624
 allie.percoco@nmrk.com

225 Franklin Street, 33rd Floor, Boston, MA 02110

NMRK.COM

Newmark has implemented a proprietary database and our tracking methodology has been revised. With this expansion and refinement in our data, there may be adjustments in historical statistics including availability, asking rents, absorption and effective rents. Newmark Research Reports are available at nmrk.com/insights. All information contained in this publication is derived from sources that are deemed to be reliable. However, Newmark has not verified any such information, and the same constitutes the statements and representations only of the source thereof and not of Newmark. Any recipient of this publication should independently verify such information and all other information that may be material to any decision the recipient may make in response to this publication and should consult with professionals of the recipient's choice with regard to all aspects of that decision, including its legal, financial and tax aspects and implications. Any recipient of this publication may not, without the prior written approval of Newmark, distribute, disseminate, publish, transmit, copy, broadcast, upload, download or in any other way reproduce this publication or any of the information it contains. This document is intended for informational purposes only, and none of the content is intended to advise or otherwise recommend a specific strategy. It is not to be relied upon in any way to predict market movement, investment in securities, transactions, investment strategies or any other matter.

