

LIVING AREA: 11271.88 sq ft • FLOORS: 2

▼ Ground Floor

LIVING AREA: 6479.15 sq ft

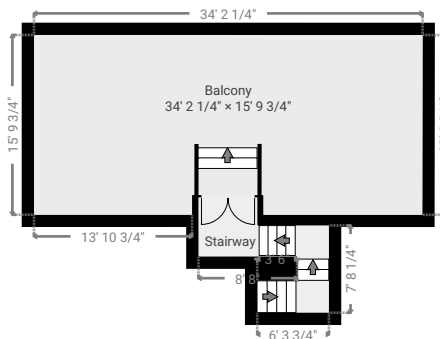


This floor plan is provided without warranty of any kind. Broken Crayon Photography, disclaims any warranty including, without limitation, satisfactory quality or accuracy of dimensions. While we do our best at being accurate, we cannot guarantee square footage calculations. While we are providing measurements and a floor plan ultimately, the real estate agent is responsible to make sure it's accurate. If you see a discrepancy, let us know immediately!

LIVING AREA: 11271.88 sq ft • FLOORS: 2

▼ 2nd Floor

LIVING AREA: 4792.72 sq ft

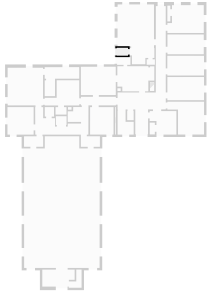


This floor plan is provided without warranty of any kind. Broken Crayon Photography, disclaims any warranty including, without limitation, satisfactory quality or accuracy of dimensions. While we do our best at being accurate, we cannot guarantee square footage calculations. While we are providing measurements and a floor plan ultimately, the real estate agent is responsible to make sure it's accurate. If you see a discrepancy, let us know immediately!

TOTAL AREA: 11271.88 sq ft • LIVING AREA: 11271.88 sq ft • FLOORS: 2

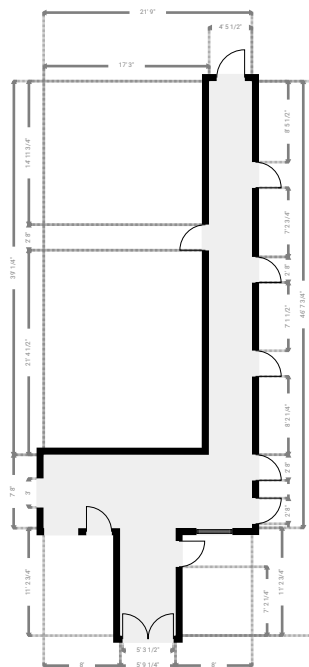
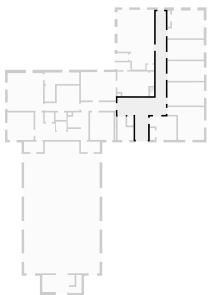
▼ **Bathroom**
Ground Floor

WIDTH: 4' 11 3/4" • LENGTH: 3' 5 1/4"
AREA: 17.07 sq ft • PERIMETER: 16' 9 3/4"



▼ **Hall**
Ground Floor

WIDTH: 21' 9" • LENGTH: 57' 10 3/4"
AREA: 405.78 sq ft • PERIMETER: 159' 3 1/2"

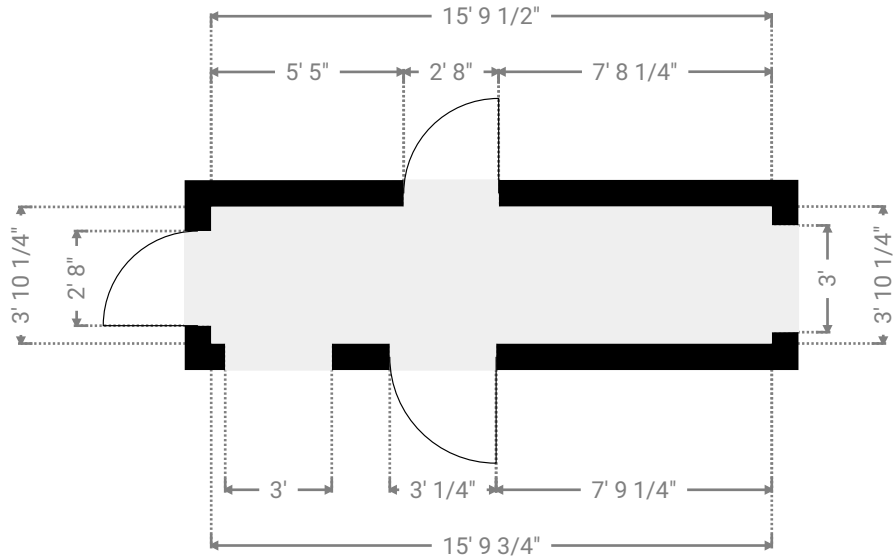
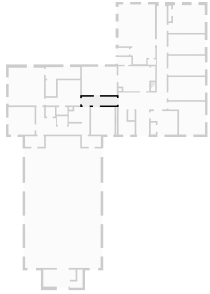


This floor plan is provided without warranty of any kind. Broken Crayon Photography, disclaims any warranty including, without limitation, satisfactory quality or accuracy of dimensions. While we do our best at being accurate, we cannot guarantee square footage calculations. While we are providing measurements and a floor plan ultimately, the real estate agent is responsible to make sure it's accurate. If you see a discrepancy, let us know immediately!

TOTAL AREA: 11271.88 sq ft • LIVING AREA: 11271.88 sq ft • FLOORS: 2

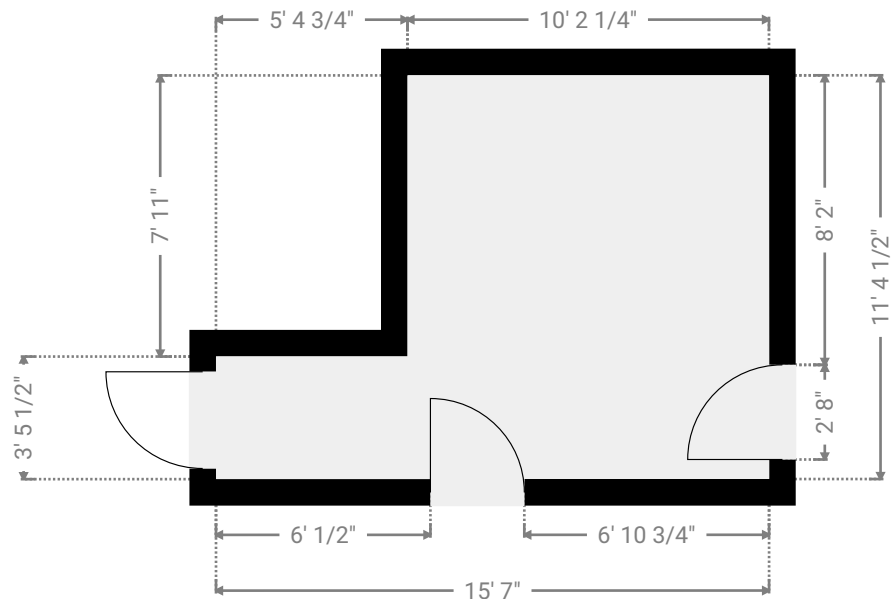
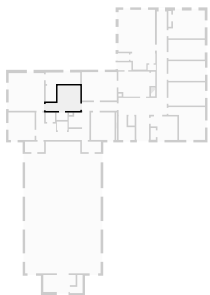
▼ **Hall**
Ground Floor

WIDTH: 15' 9 1/2" • LENGTH: 3' 10 1/4"
AREA: 60.86 sq ft • PERIMETER: 39' 3 1/2"



▼ **Hall**
Ground Floor

WIDTH: 15' 7" • LENGTH: 11' 4 1/2"
AREA: 134.46 sq ft • PERIMETER: 53' 11"

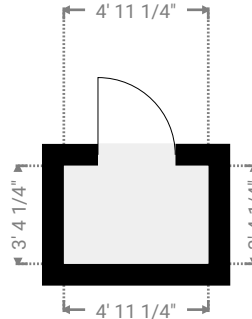
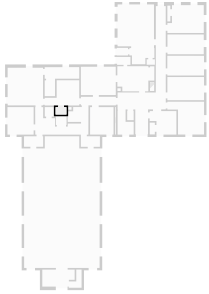


This floor plan is provided without warranty of any kind. Broken Crayon Photography, disclaims any warranty including, without limitation, satisfactory quality or accuracy of dimensions. While we do our best at being accurate, we cannot guarantee square footage calculations. While we are providing measurements and a floor plan ultimately, the real estate agent is responsible to make sure it's accurate. If you see a discrepancy, let us know immediately!

TOTAL AREA: 11271.88 sq ft • LIVING AREA: 11271.88 sq ft • FLOORS: 2

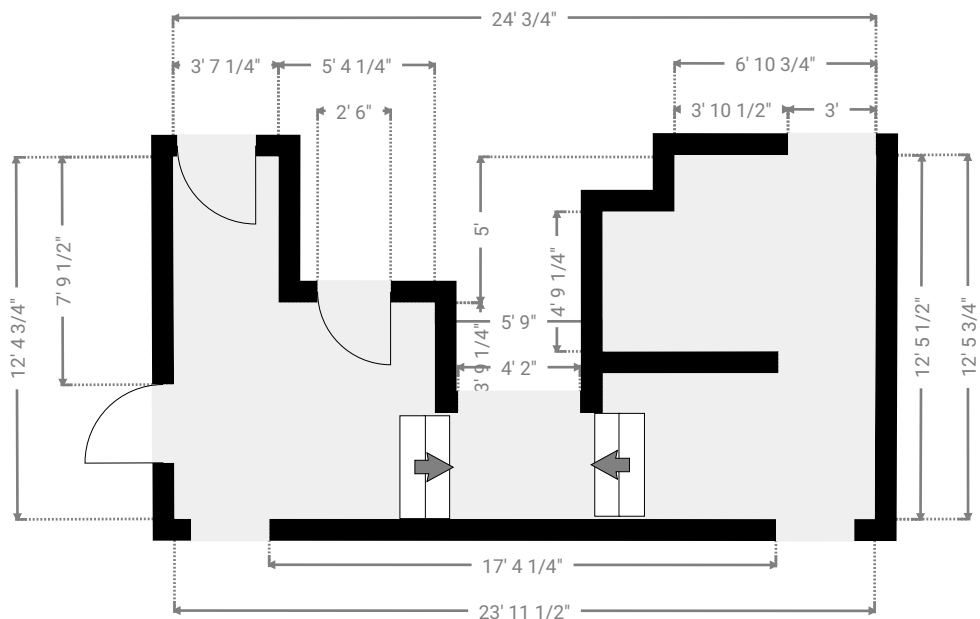
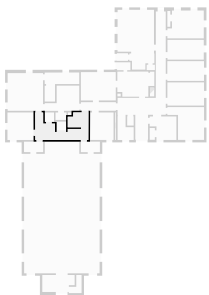
▼ **Closet**
Ground Floor

WIDTH: 4' 11 1/4" • LENGTH: 3' 4 1/4"
AREA: 16.60 sq ft • PERIMETER: 16' 7 1/4"



▼ **Hall**
Ground Floor

WIDTH: 24' 3/4" • LENGTH: 12' 5 3/4"
AREA: 211.89 sq ft • PERIMETER: 102' 6 1/2"

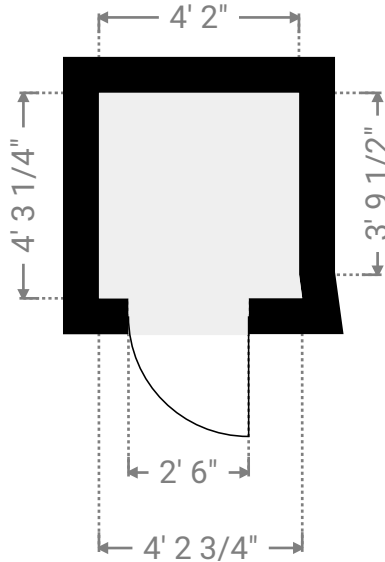
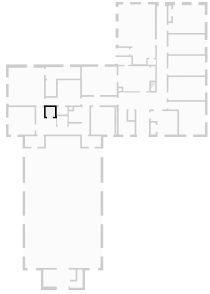


This floor plan is provided without warranty of any kind. Broken Crayon Photography, disclaims any warranty including, without limitation, satisfactory quality or accuracy of dimensions. While we do our best at being accurate, we cannot guarantee square footage calculations. While we are providing measurements and a floor plan ultimately, the real estate agent is responsible to make sure it's accurate. If you see a discrepancy, let us know immediately!

TOTAL AREA: 11271.88 sq ft • LIVING AREA: 11271.88 sq ft • FLOORS: 2

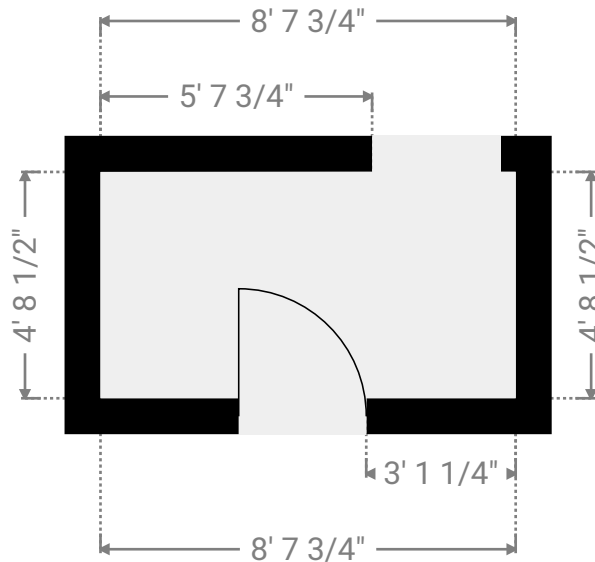
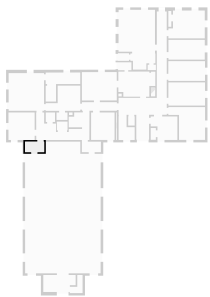
▼ **Closet**
Ground Floor

WIDTH: 4' 2 3/4" • LENGTH: 4' 3 1/4"
AREA: 17.80 sq ft • PERIMETER: 16' 11 1/4"



▼ **Hall**
Ground Floor

WIDTH: 8' 7 3/4" • LENGTH: 4' 8 1/2"
AREA: 40.67 sq ft • PERIMETER: 26' 8 1/4"

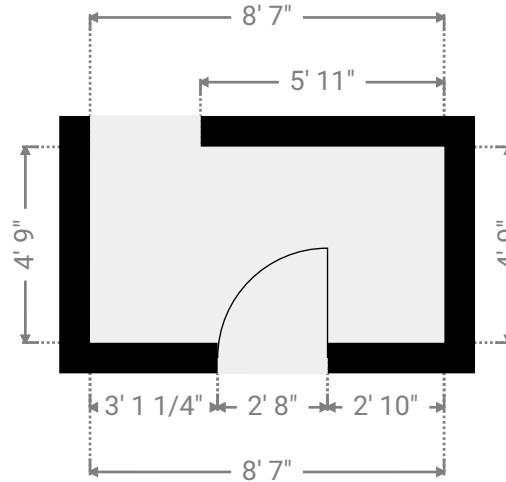
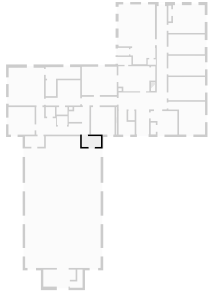


This floor plan is provided without warranty of any kind. Broken Crayon Photography, disclaims any warranty including, without limitation, satisfactory quality or accuracy of dimensions. While we do our best at being accurate, we cannot guarantee square footage calculations. While we are providing measurements and a floor plan ultimately, the real estate agent is responsible to make sure it's accurate. If you see a discrepancy, let us know immediately!

TOTAL AREA: 11271.88 sq ft • LIVING AREA: 11271.88 sq ft • FLOORS: 2

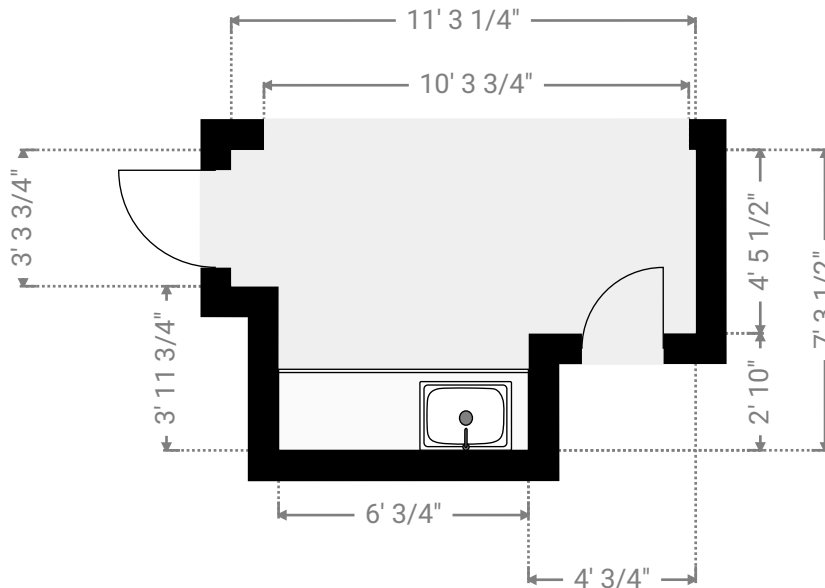
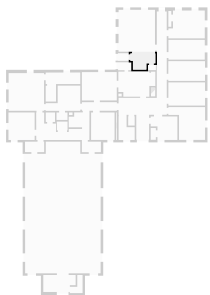
▼ **Hall**
Ground Floor

WIDTH: 8' 7" • LENGTH: 4' 9"
AREA: 40.82 sq ft • PERIMETER: 26' 8 1/4"



▼ **Other**
Ground Floor

WIDTH: 11' 3 1/4" • LENGTH: 7' 3 1/2"
AREA: 66.08 sq ft • PERIMETER: 37' 1 1/2"

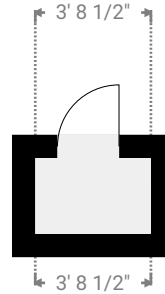
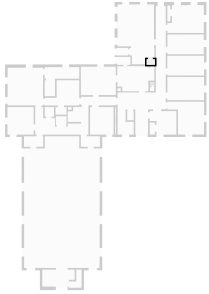


This floor plan is provided without warranty of any kind. Broken Crayon Photography, disclaims any warranty including, without limitation, satisfactory quality or accuracy of dimensions. While we do our best at being accurate, we cannot guarantee square footage calculations. While we are providing measurements and a floor plan ultimately, the real estate agent is responsible to make sure it's accurate. If you see a discrepancy, let us know immediately!

TOTAL AREA: 11271.88 sq ft • LIVING AREA: 11271.88 sq ft • FLOORS: 2

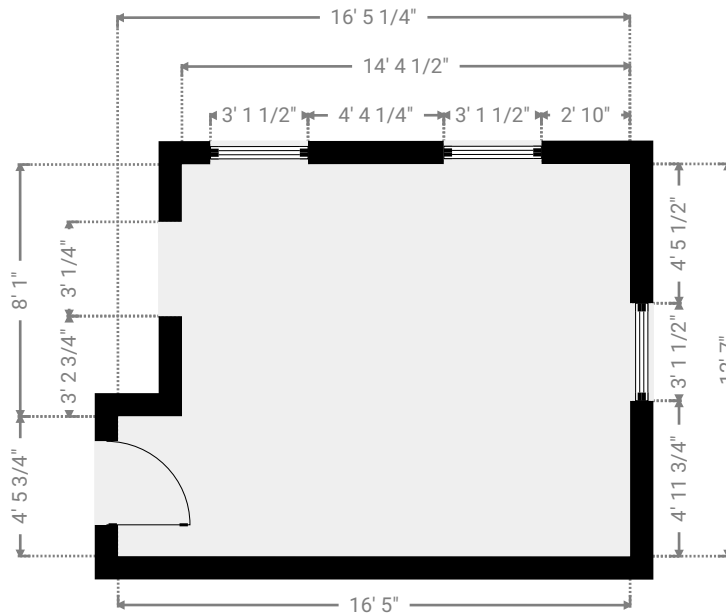
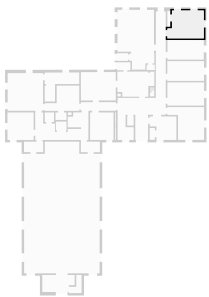
▼ **Closet**
Ground Floor

WIDTH: 3' 8 1/2" • LENGTH: 2' 5 1/4"
AREA: 9.02 sq ft • PERIMETER: 12' 3 1/4"



▼ **Private Office**
Ground Floor

WIDTH: 16' 5 1/4" • LENGTH: 12' 7"
AREA: 189.77 sq ft • PERIMETER: 57' 11 3/4"

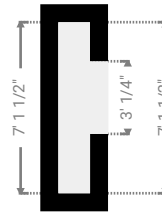
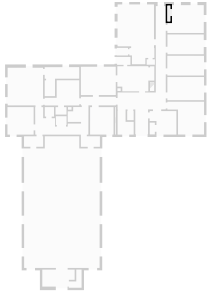


This floor plan is provided without warranty of any kind. Broken Crayon Photography, disclaims any warranty including, without limitation, satisfactory quality or accuracy of dimensions. While we do our best at being accurate, we cannot guarantee square footage calculations. While we are providing measurements and a floor plan ultimately, the real estate agent is responsible to make sure it's accurate. If you see a discrepancy, let us know immediately!

TOTAL AREA: 11271.88 sq ft • LIVING AREA: 11271.88 sq ft • FLOORS: 2

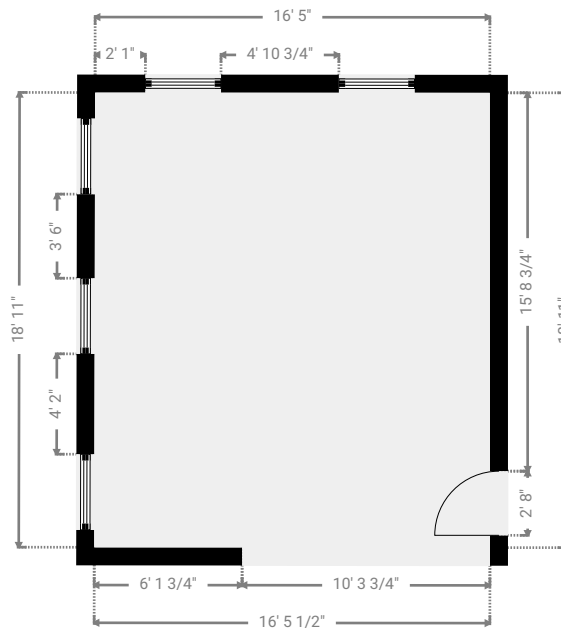
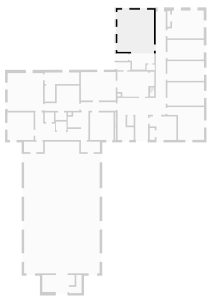
▼ **Closet**
Ground Floor

WIDTH: 1' 3 3/4" • LENGTH: 7' 1 1/2"
AREA: 9.39 sq ft • PERIMETER: 16' 10 1/2"



▼ **Private Office**
Ground Floor

WIDTH: 16' 5 1/2" • LENGTH: 18' 11"
AREA: 311.17 sq ft • PERIMETER: 70' 8 3/4"

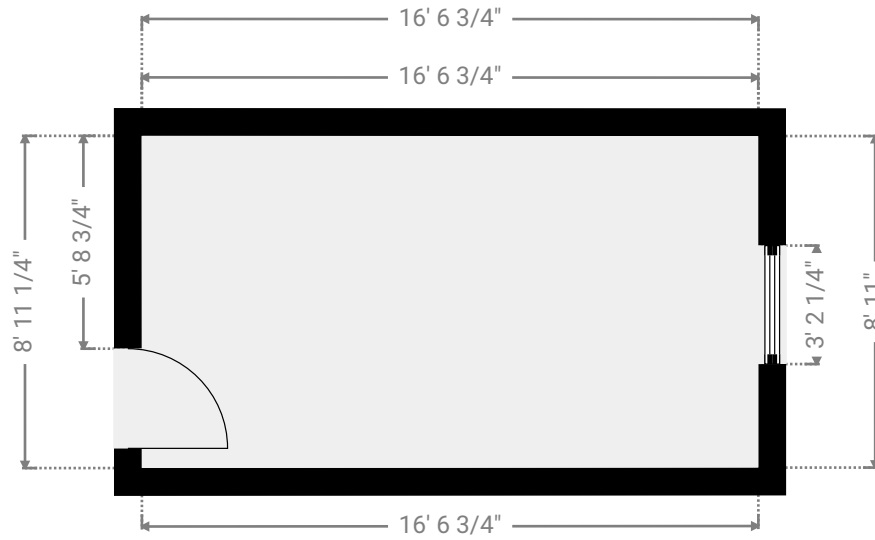
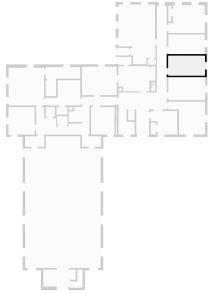


This floor plan is provided without warranty of any kind. Broken Crayon Photography, disclaims any warranty including, without limitation, satisfactory quality or accuracy of dimensions. While we do our best at being accurate, we cannot guarantee square footage calculations. While we are providing measurements and a floor plan ultimately, the real estate agent is responsible to make sure it's accurate. If you see a discrepancy, let us know immediately!

TOTAL AREA: 11271.88 sq ft • LIVING AREA: 11271.88 sq ft • FLOORS: 2

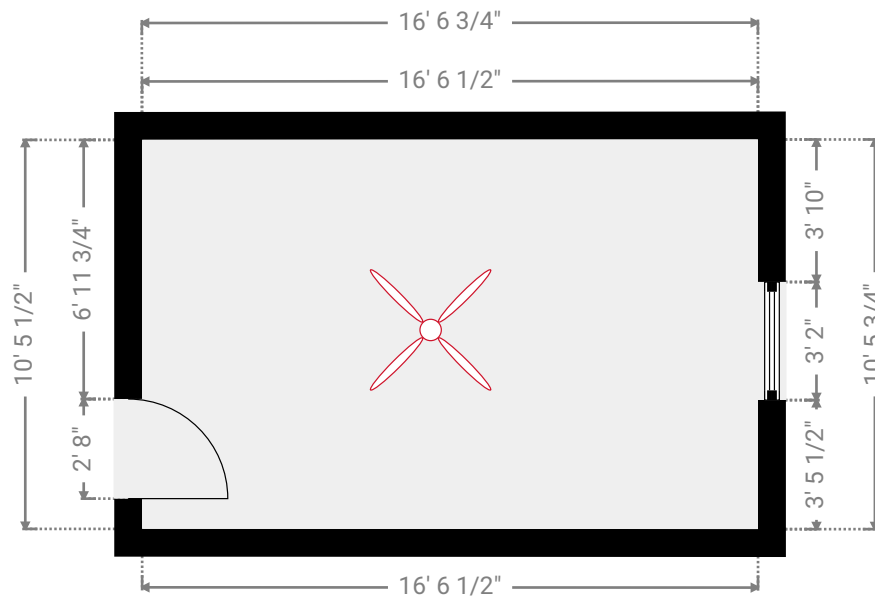
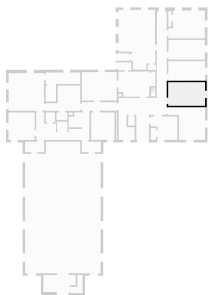
▼ **Private Office**
Ground Floor

WIDTH: 16' 6 3/4" • LENGTH: 8' 11 1/4"
AREA: 147.73 sq ft • PERIMETER: 50' 11 1/2"



▼ **Private Office**
Ground Floor

WIDTH: 16' 6 3/4" • LENGTH: 10' 5 3/4"
AREA: 173.15 sq ft • PERIMETER: 54' 1/4"

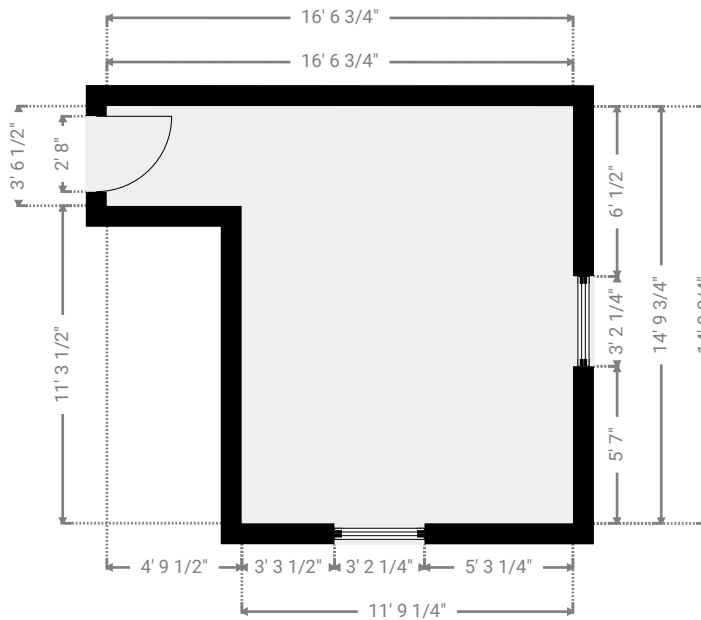
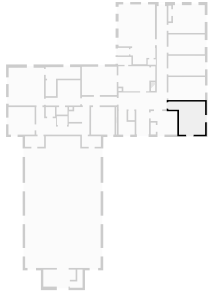


This floor plan is provided without warranty of any kind. Broken Crayon Photography, disclaims any warranty including, without limitation, satisfactory quality or accuracy of dimensions. While we do our best at being accurate, we cannot guarantee square footage calculations. While we are providing measurements and a floor plan ultimately, the real estate agent is responsible to make sure it's accurate. If you see a discrepancy, let us know immediately!

TOTAL AREA: 11271.88 sq ft • LIVING AREA: 11271.88 sq ft • FLOORS: 2

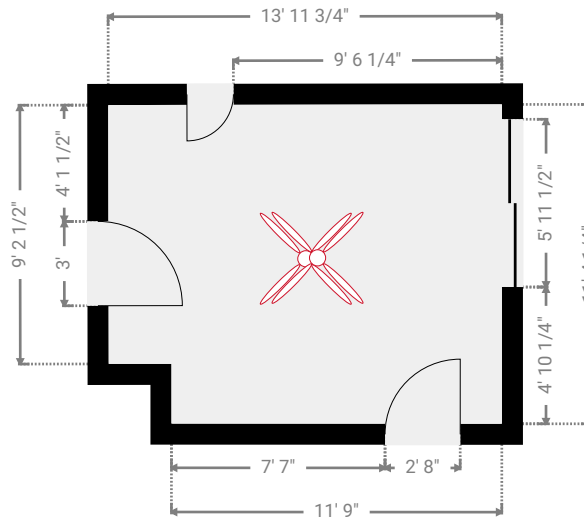
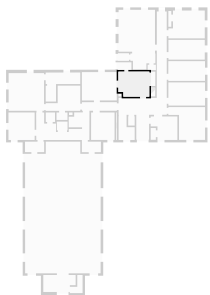
▼ **Private Office**
Ground Floor

WIDTH: 16' 6 3/4" • LENGTH: 14' 9 3/4"
AREA: 191.30 sq ft • PERIMETER: 62' 9 1/4"



▼ **Private Office**
Ground Floor

WIDTH: 14' • LENGTH: 11' 4 1/4"
AREA: 153.73 sq ft • PERIMETER: 50' 7 1/2"

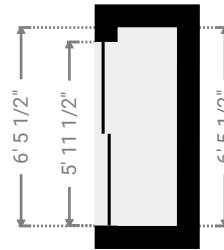
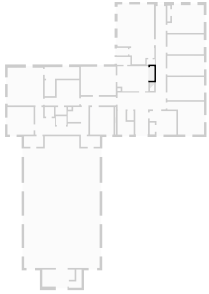


This floor plan is provided without warranty of any kind. Broken Crayon Photography, disclaims any warranty including, without limitation, satisfactory quality or accuracy of dimensions. While we do our best at being accurate, we cannot guarantee square footage calculations. While we are providing measurements and a floor plan ultimately, the real estate agent is responsible to make sure it's accurate. If you see a discrepancy, let us know immediately!

TOTAL AREA: 11271.88 sq ft • LIVING AREA: 11271.88 sq ft • FLOORS: 2

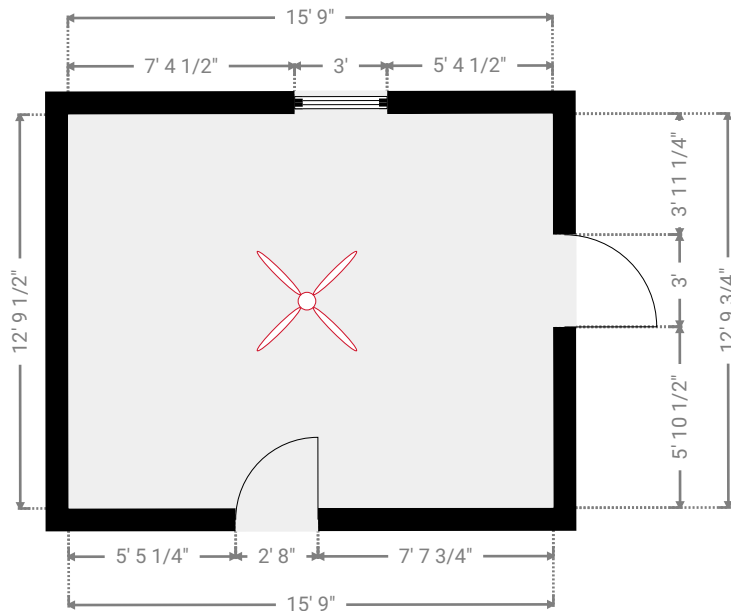
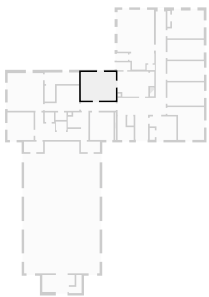
▼ **Closet**
Ground Floor

WIDTH: 1' 11" • LENGTH: 6' 5 1/2"
AREA: 12.37 sq ft • PERIMETER: 16' 8 3/4"



▼ **Private Office**
Ground Floor

WIDTH: 15' 9" • LENGTH: 12' 9 3/4"
AREA: 201.69 sq ft • PERIMETER: 57' 1 1/4"

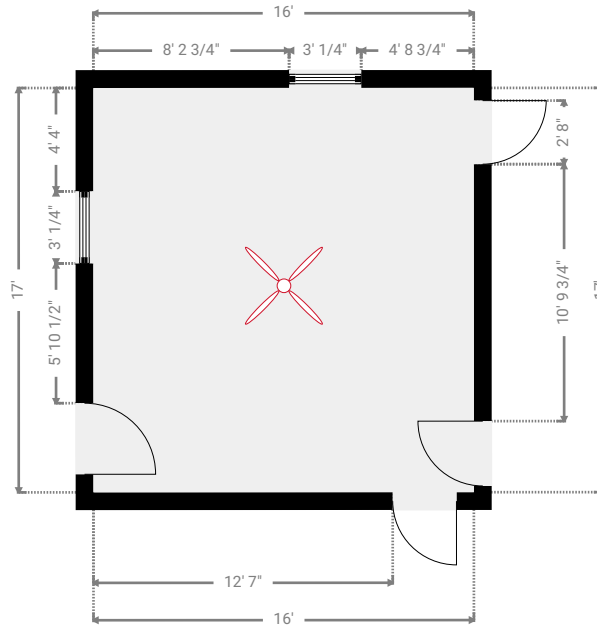
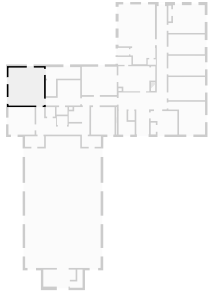


This floor plan is provided without warranty of any kind. Broken Crayon Photography, disclaims any warranty including, without limitation, satisfactory quality or accuracy of dimensions. While we do our best at being accurate, we cannot guarantee square footage calculations. While we are providing measurements and a floor plan ultimately, the real estate agent is responsible to make sure it's accurate. If you see a discrepancy, let us know immediately!

TOTAL AREA: 11271.88 sq ft • LIVING AREA: 11271.88 sq ft • FLOORS: 2

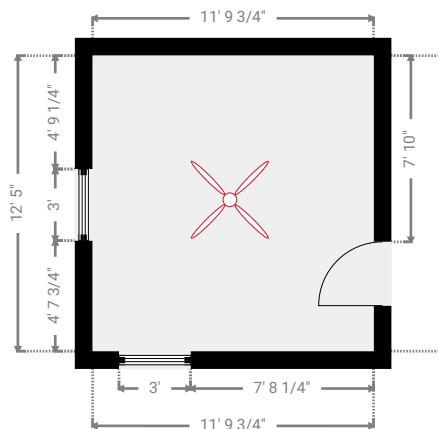
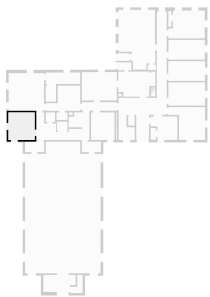
▼ **Private Office**
Ground Floor

WIDTH: 16' • LENGTH: 17'
AREA: 271.84 sq ft • PERIMETER: 65' 11 3/4"



▼ **Private Office**
Ground Floor

WIDTH: 11' 9 3/4" • LENGTH: 12' 5"
AREA: 146.73 sq ft • PERIMETER: 48' 5 1/2"

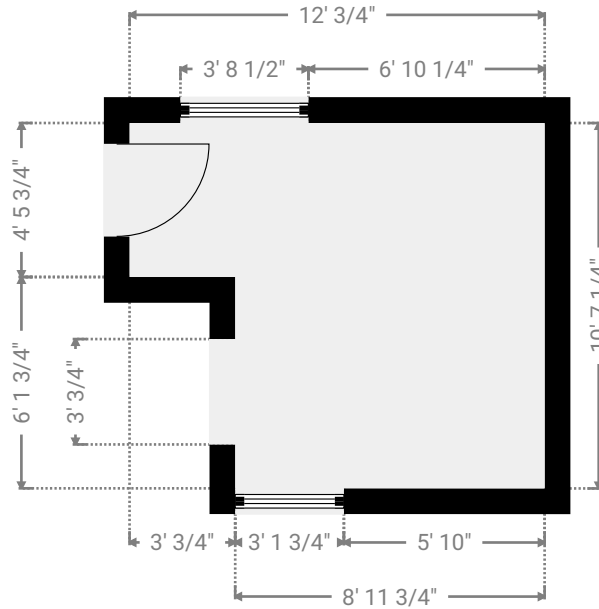
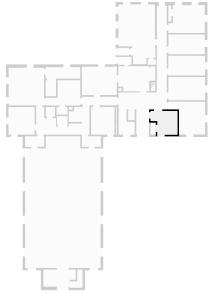


This floor plan is provided without warranty of any kind. Broken Crayon Photography, disclaims any warranty including, without limitation, satisfactory quality or accuracy of dimensions. While we do our best at being accurate, we cannot guarantee square footage calculations. While we are providing measurements and a floor plan ultimately, the real estate agent is responsible to make sure it's accurate. If you see a discrepancy, let us know immediately!

TOTAL AREA: 11271.88 sq ft • LIVING AREA: 11271.88 sq ft • FLOORS: 2

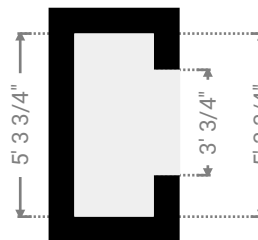
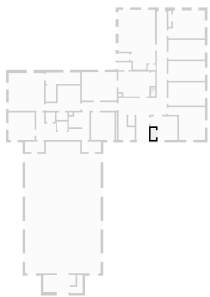
▼ **Private Office**
Ground Floor

WIDTH: 12' 3/4" • LENGTH: 10' 7 1/4"
AREA: 109.05 sq ft • PERIMETER: 45' 4"



▼ **Closet**
Ground Floor

WIDTH: 2' 3 3/4" • LENGTH: 5' 3 3/4"
AREA: 12.27 sq ft • PERIMETER: 15' 3"

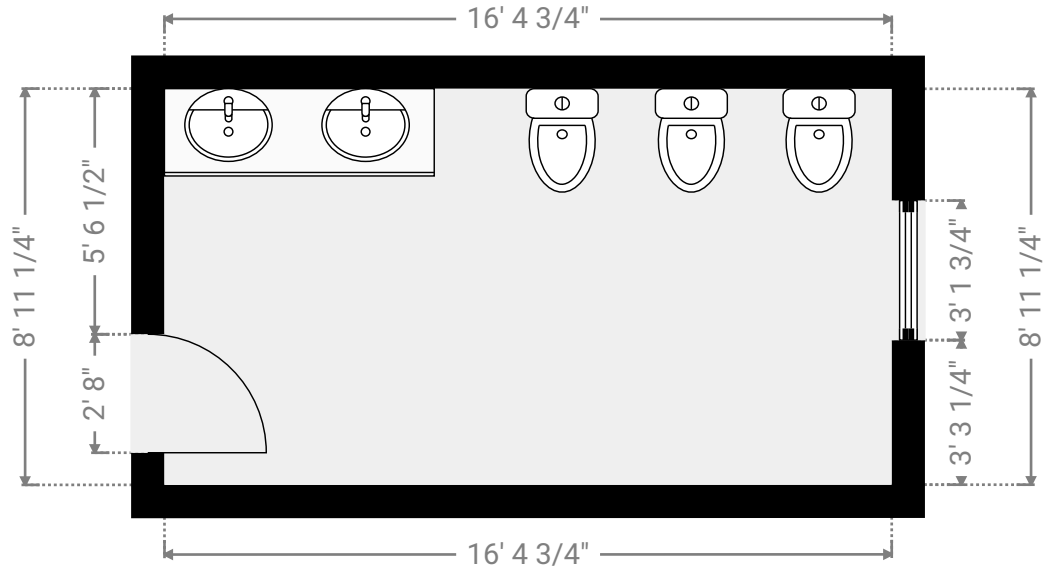
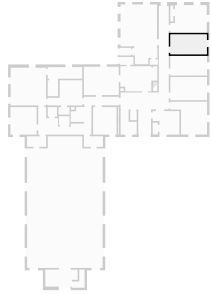


This floor plan is provided without warranty of any kind. Broken Crayon Photography, disclaims any warranty including, without limitation, satisfactory quality or accuracy of dimensions. While we do our best at being accurate, we cannot guarantee square footage calculations. While we are providing measurements and a floor plan ultimately, the real estate agent is responsible to make sure it's accurate. If you see a discrepancy, let us know immediately!

TOTAL AREA: 11271.88 sq ft • LIVING AREA: 11271.88 sq ft • FLOORS: 2

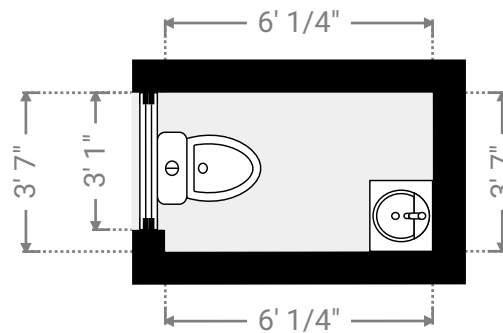
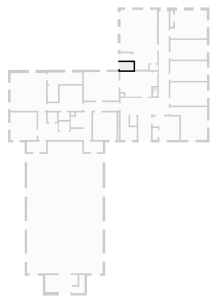
▼ Restrooms
Ground Floor

WIDTH: 16' 4 3/4" • LENGTH: 8' 11 1/4"
AREA: 146.31 sq ft • PERIMETER: 50' 7 1/2"



▼ Restrooms
Ground Floor

WIDTH: 6' 1/4" • LENGTH: 3' 7"
AREA: 21.55 sq ft • PERIMETER: 19' 2 1/2"

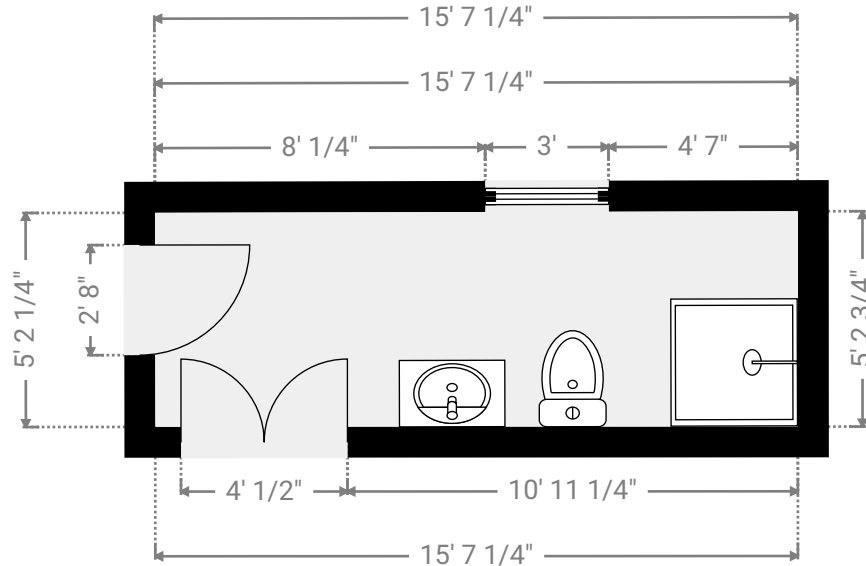
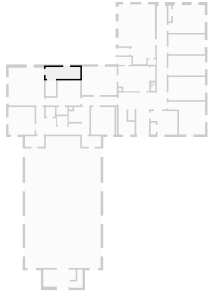


This floor plan is provided without warranty of any kind. Broken Crayon Photography, disclaims any warranty including, without limitation, satisfactory quality or accuracy of dimensions. While we do our best at being accurate, we cannot guarantee square footage calculations. While we are providing measurements and a floor plan ultimately, the real estate agent is responsible to make sure it's accurate. If you see a discrepancy, let us know immediately!

TOTAL AREA: 11271.88 sq ft • LIVING AREA: 11271.88 sq ft • FLOORS: 2

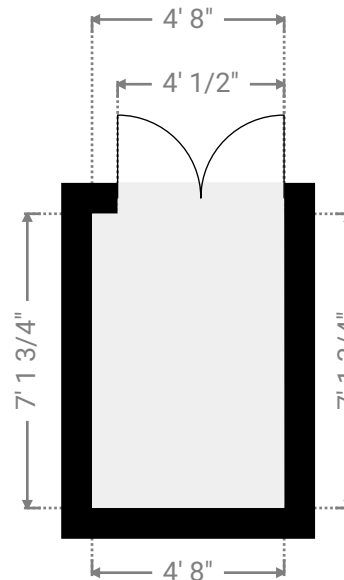
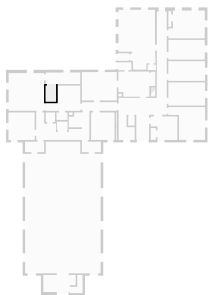
▼ Restrooms
Ground Floor

WIDTH: 15' 7 1/4" • LENGTH: 5' 2 3/4"
AREA: 81.29 sq ft • PERIMETER: 41' 7 1/2"



▼ Closet
Ground Floor

WIDTH: 4' 8" • LENGTH: 7' 1 3/4"
AREA: 33.29 sq ft • PERIMETER: 23' 7 1/4"

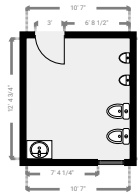
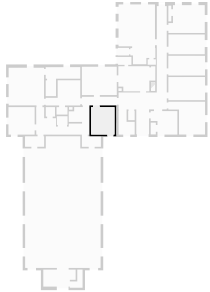


This floor plan is provided without warranty of any kind. Broken Crayon Photography, disclaims any warranty including, without limitation, satisfactory quality or accuracy of dimensions. While we do our best at being accurate, we cannot guarantee square footage calculations. While we are providing measurements and a floor plan ultimately, the real estate agent is responsible to make sure it's accurate. If you see a discrepancy, let us know immediately!

TOTAL AREA: 11271.88 sq ft • LIVING AREA: 11271.88 sq ft • FLOORS: 2

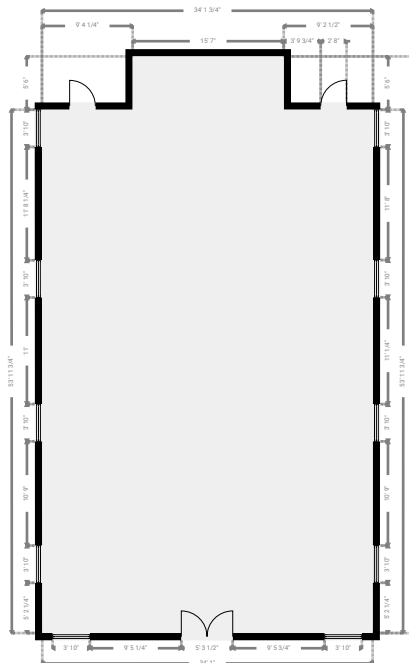
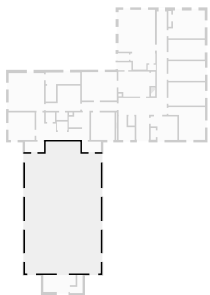
▼ Restrooms
Ground Floor

WIDTH: 10' 7" • LENGTH: 12' 4 3/4"
AREA: 131.25 sq ft • PERIMETER: 45' 11 1/2"



▼ Sanctuary
Ground Floor

WIDTH: 34' 1 3/4" • LENGTH: 59' 5 3/4"
AREA: 1926.98 sq ft • PERIMETER: 187' 2"

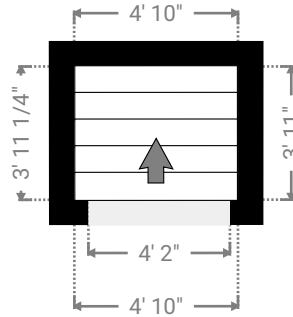


This floor plan is provided without warranty of any kind. Broken Crayon Photography, disclaims any warranty including, without limitation, satisfactory quality or accuracy of dimensions. While we do our best at being accurate, we cannot guarantee square footage calculations. While we are providing measurements and a floor plan ultimately, the real estate agent is responsible to make sure it's accurate. If you see a discrepancy, let us know immediately!

TOTAL AREA: 11271.88 sq ft • LIVING AREA: 11271.88 sq ft • FLOORS: 2

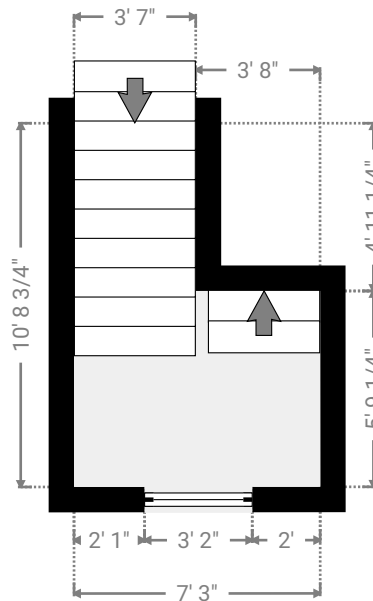
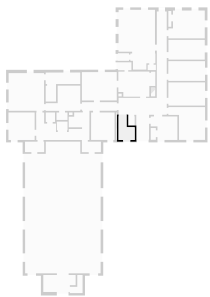
▼ **Stairway**
Ground Floor

WIDTH: 4' 10" • LENGTH: 3' 11 1/4"
AREA: 18.95 sq ft • PERIMETER: 17' 6"



▼ **Stairway**
Ground Floor

WIDTH: 7' 3" • LENGTH: 10' 8 3/4"
AREA: 59.62 sq ft • PERIMETER: 35' 11 1/4"

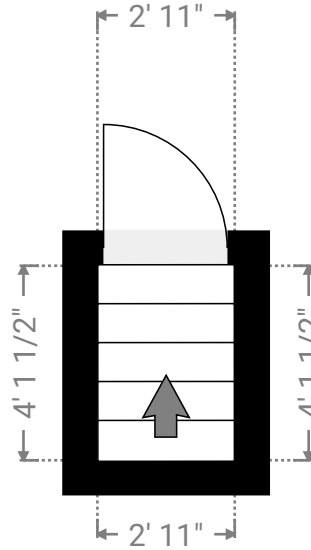
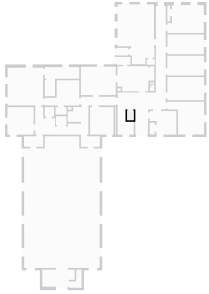


This floor plan is provided without warranty of any kind. Broken Crayon Photography, disclaims any warranty including, without limitation, satisfactory quality or accuracy of dimensions. While we do our best at being accurate, we cannot guarantee square footage calculations. While we are providing measurements and a floor plan ultimately, the real estate agent is responsible to make sure it's accurate. If you see a discrepancy, let us know immediately!

TOTAL AREA: 11271.88 sq ft • LIVING AREA: 11271.88 sq ft • FLOORS: 2

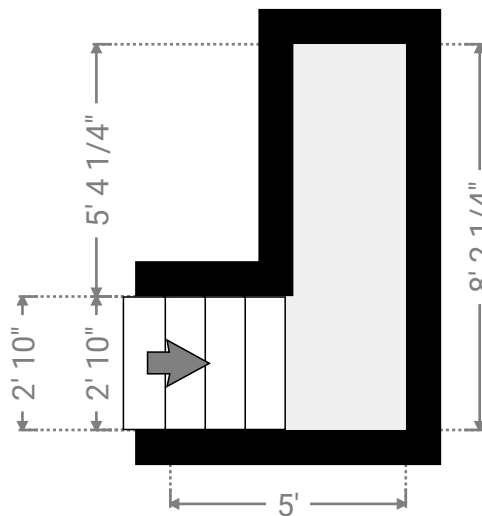
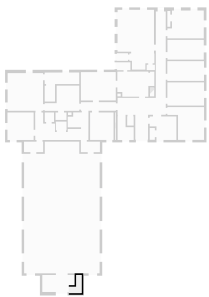
▼ **Stairway**
Ground Floor

WIDTH: 2' 11" • LENGTH: 4' 1 1/2"
AREA: 12.05 sq ft • PERIMETER: 14' 1 1/4"



▼ **Stairway**
Ground Floor

WIDTH: 5' • LENGTH: 8' 2 1/4"
AREA: 26.94 sq ft • PERIMETER: 26' 4 1/2"

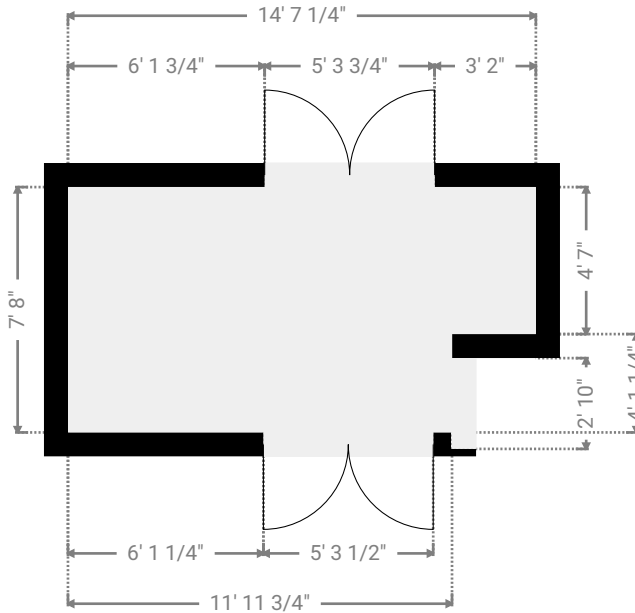
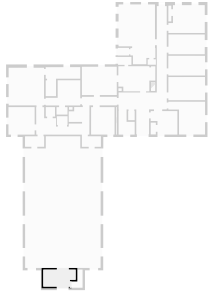


This floor plan is provided without warranty of any kind. Broken Crayon Photography, disclaims any warranty including, without limitation, satisfactory quality or accuracy of dimensions. While we do our best at being accurate, we cannot guarantee square footage calculations. While we are providing measurements and a floor plan ultimately, the real estate agent is responsible to make sure it's accurate. If you see a discrepancy, let us know immediately!

TOTAL AREA: 11271.88 sq ft • LIVING AREA: 11271.88 sq ft • FLOORS: 2

▼ **Vestibule**
Ground Floor

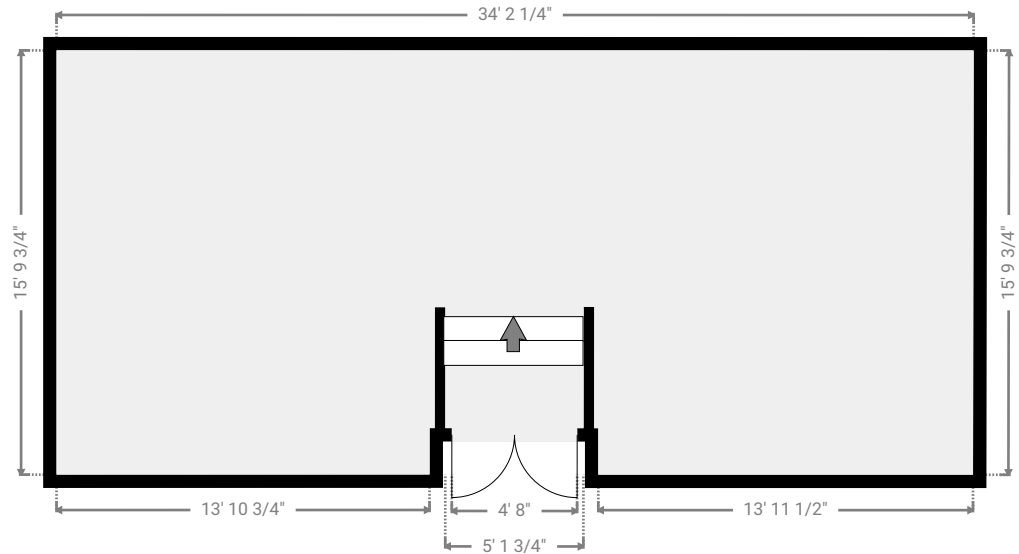
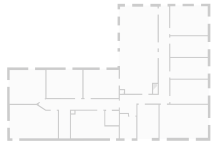
WIDTH: 14' 7 1/4" • LENGTH: 7' 8"
AREA: 103.76 sq ft • PERIMETER: 44' 6 1/4"



TOTAL AREA: 11271.88 sq ft • LIVING AREA: 11271.88 sq ft • FLOORS: 2

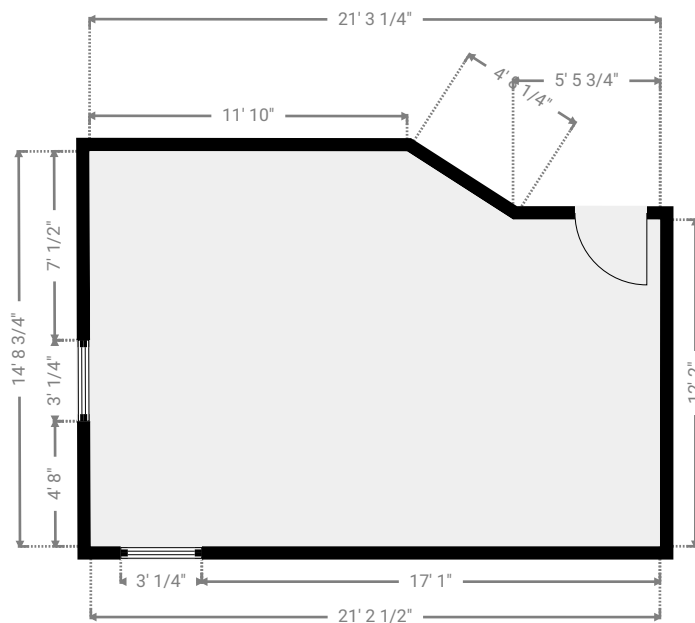
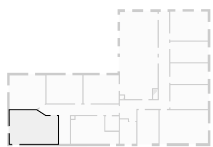
▼ **Balcony**
2nd Floor

WIDTH: 34' 2 1/4" • LENGTH: 15' 9 3/4"
AREA: 525.86 sq ft • PERIMETER: 121' 6"



▼ **Conference Room**
2nd Floor

WIDTH: 21' 3 1/4" • LENGTH: 14' 8 3/4"
AREA: 293.60 sq ft • PERIMETER: 70' 1 1/2"

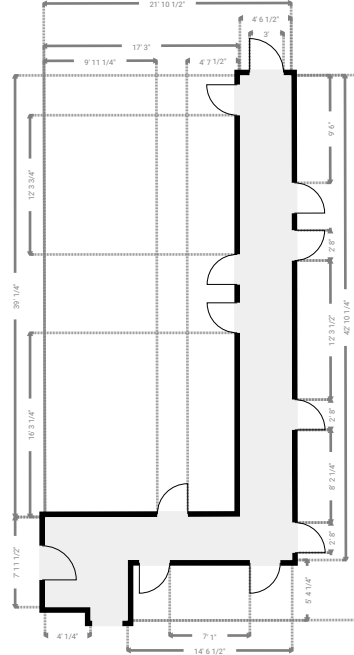
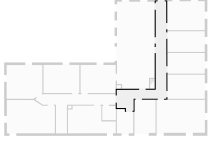


This floor plan is provided without warranty of any kind. Broken Crayon Photography, disclaims any warranty including, without limitation, satisfactory quality or accuracy of dimensions. While we do our best at being accurate, we cannot guarantee square footage calculations. While we are providing measurements and a floor plan ultimately, the real estate agent is responsible to make sure it's accurate. If you see a discrepancy, let us know immediately!

TOTAL AREA: 11271.88 sq ft • LIVING AREA: 11271.88 sq ft • FLOORS: 2

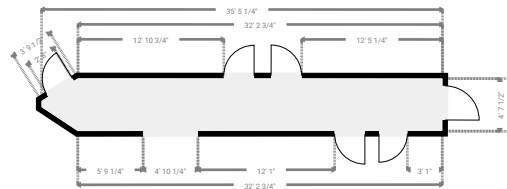
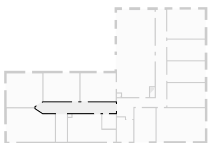
▼ Hall
2nd Floor

WIDTH: 21' 10 1/2" • LENGTH: 48' 2 1/4"
AREA: 295.96 sq ft • PERIMETER: 140' 1/4"



▼ Hall
2nd Floor

WIDTH: 35' 5 1/4" • LENGTH: 4' 8"
AREA: 158.18 sq ft • PERIMETER: 77' 3"

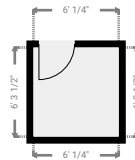
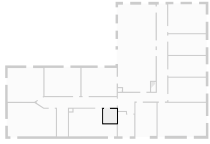


This floor plan is provided without warranty of any kind. Broken Crayon Photography, disclaims any warranty including, without limitation, satisfactory quality or accuracy of dimensions. While we do our best at being accurate, we cannot guarantee square footage calculations. While we are providing measurements and a floor plan ultimately, the real estate agent is responsible to make sure it's accurate. If you see a discrepancy, let us know immediately!

TOTAL AREA: 11271.88 sq ft • LIVING AREA: 11271.88 sq ft • FLOORS: 2

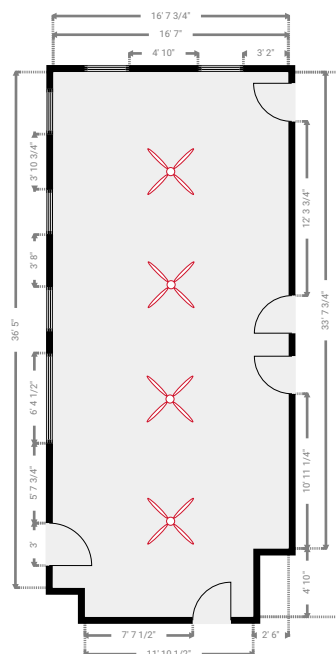
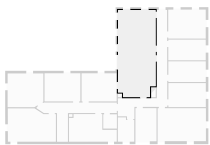
▼ **Closet**
2nd Floor

WIDTH: 6' 1/4" • LENGTH: 6' 3 1/2"
AREA: 37.88 sq ft • PERIMETER: 24' 7 1/2"



▼ **Open Space**
2nd Floor

WIDTH: 16' 7 3/4" • LENGTH: 38' 5 3/4"
AREA: 622.88 sq ft • PERIMETER: 110' 2 1/4"

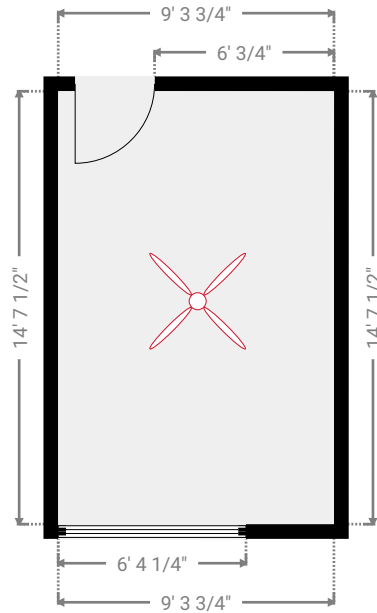
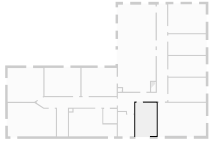


This floor plan is provided without warranty of any kind. Broken Crayon Photography, disclaims any warranty including, without limitation, satisfactory quality or accuracy of dimensions. While we do our best at being accurate, we cannot guarantee square footage calculations. While we are providing measurements and a floor plan ultimately, the real estate agent is responsible to make sure it's accurate. If you see a discrepancy, let us know immediately!

TOTAL AREA: 11271.88 sq ft • LIVING AREA: 11271.88 sq ft • FLOORS: 2

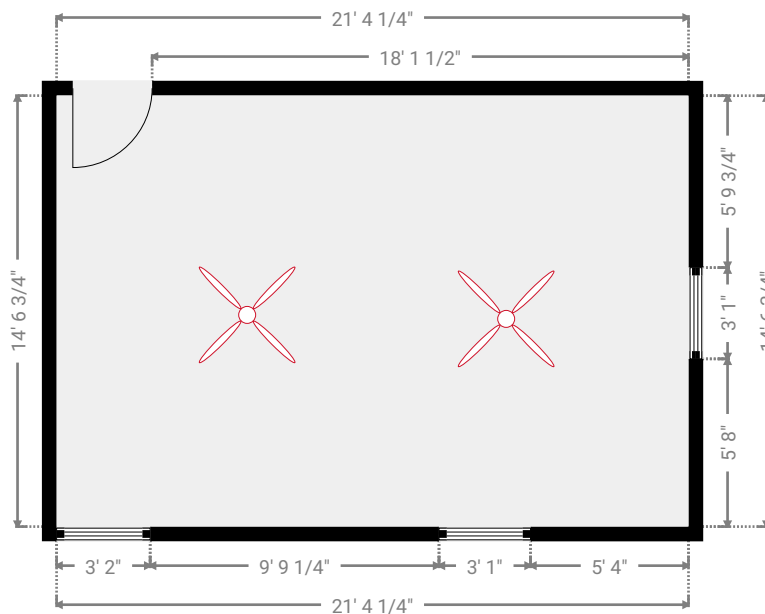
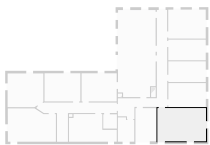
▼ **Private Office**
2nd Floor

WIDTH: 9' 3 3/4" • LENGTH: 14' 7 1/2"
AREA: 136.40 sq ft • PERIMETER: 47' 11"



▼ **Private Office**
2nd Floor

WIDTH: 21' 4 1/4" • LENGTH: 14' 6 3/4"
AREA: 311.22 sq ft • PERIMETER: 71' 10 1/4"

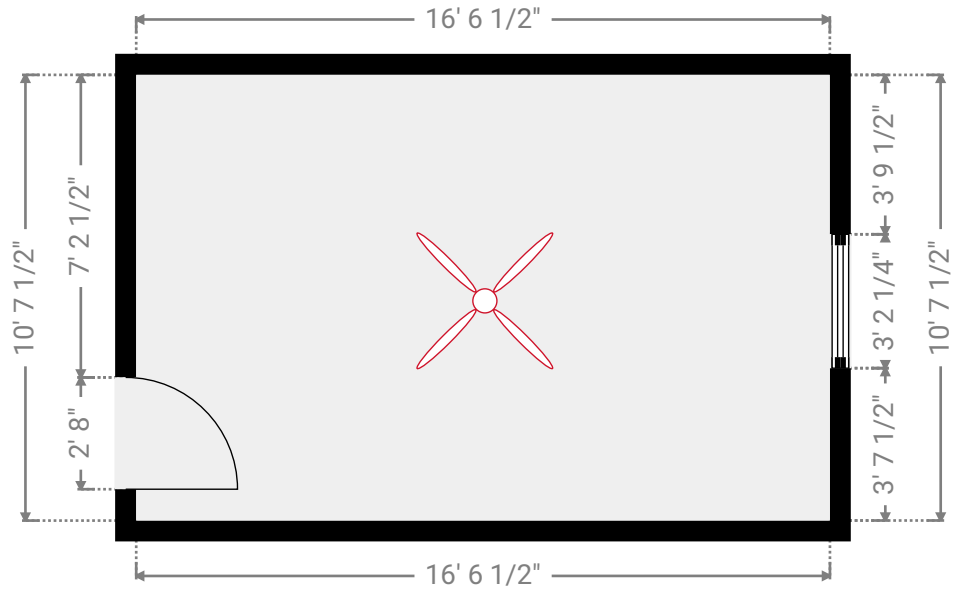
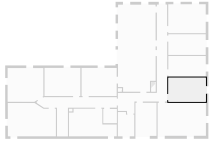


This floor plan is provided without warranty of any kind. Broken Crayon Photography, disclaims any warranty including, without limitation, satisfactory quality or accuracy of dimensions. While we do our best at being accurate, we cannot guarantee square footage calculations. While we are providing measurements and a floor plan ultimately, the real estate agent is responsible to make sure it's accurate. If you see a discrepancy, let us know immediately!

TOTAL AREA: 11271.88 sq ft • LIVING AREA: 11271.88 sq ft • FLOORS: 2

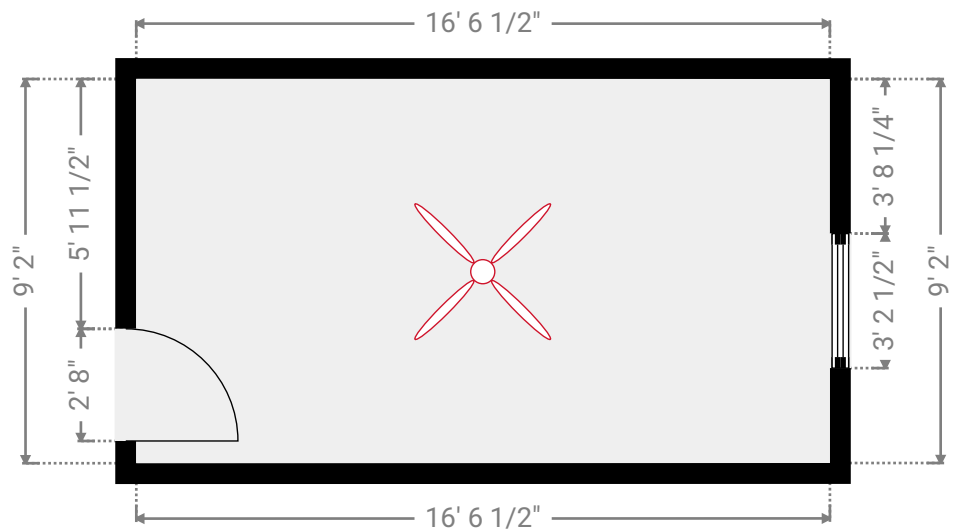
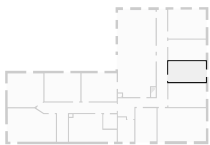
▼ Private Office
2nd Floor

WIDTH: 16' 6 1/2" • LENGTH: 10' 7 1/2"
AREA: 175.67 sq ft • PERIMETER: 54' 3 3/4"



▼ Private Office
2nd Floor

WIDTH: 16' 6 1/2" • LENGTH: 9' 2"
AREA: 151.39 sq ft • PERIMETER: 51' 4 1/2"

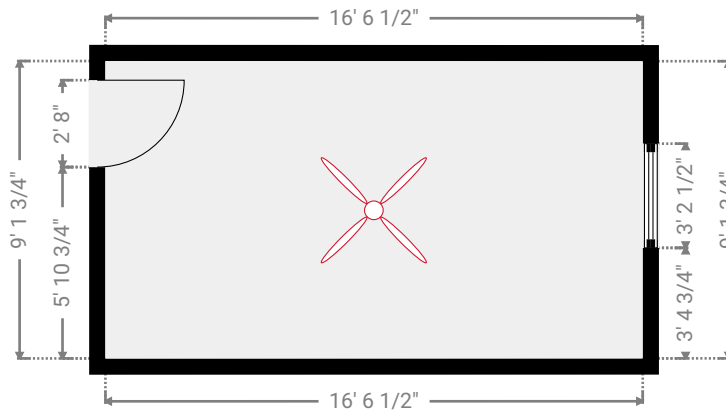
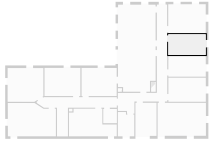


This floor plan is provided without warranty of any kind. Broken Crayon Photography, disclaims any warranty including, without limitation, satisfactory quality or accuracy of dimensions. While we do our best at being accurate, we cannot guarantee square footage calculations. While we are providing measurements and a floor plan ultimately, the real estate agent is responsible to make sure it's accurate. If you see a discrepancy, let us know immediately!

TOTAL AREA: 11271.88 sq ft • LIVING AREA: 11271.88 sq ft • FLOORS: 2

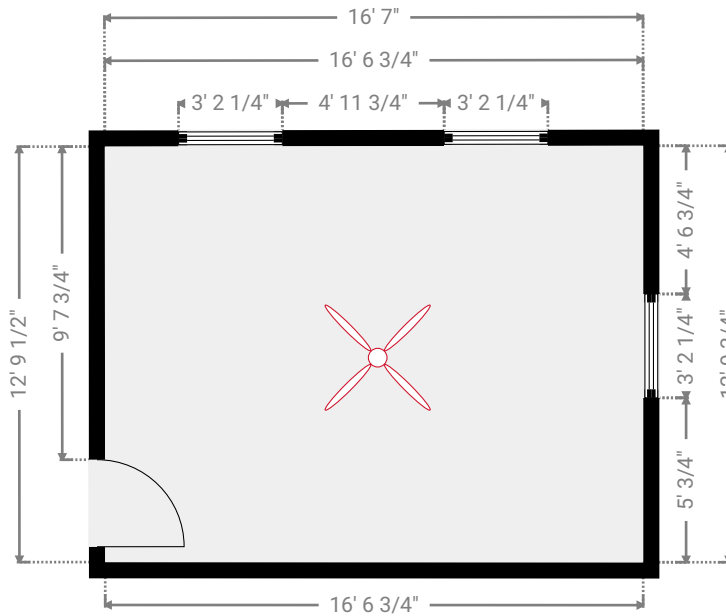
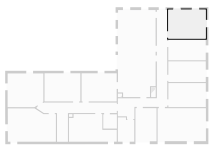
▼ Private Office
2nd Floor

WIDTH: 16' 6 1/2" • LENGTH: 9' 1 3/4"
AREA: 151.24 sq ft • PERIMETER: 51' 4 1/4"



▼ Private Office
2nd Floor

WIDTH: 16' 7" • LENGTH: 12' 9 3/4"
AREA: 211.96 sq ft • PERIMETER: 58' 8 3/4"

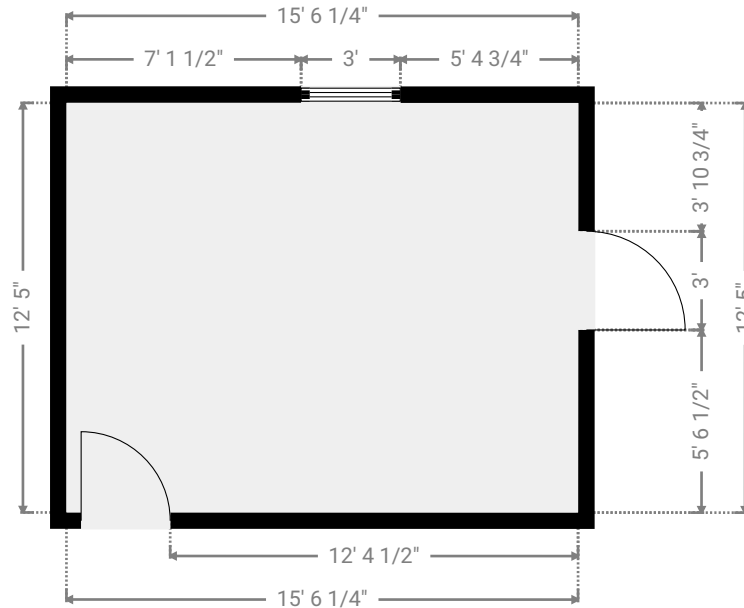
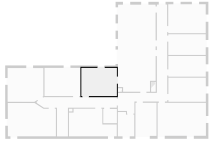


This floor plan is provided without warranty of any kind. Broken Crayon Photography, disclaims any warranty including, without limitation, satisfactory quality or accuracy of dimensions. While we do our best at being accurate, we cannot guarantee square footage calculations. While we are providing measurements and a floor plan ultimately, the real estate agent is responsible to make sure it's accurate. If you see a discrepancy, let us know immediately!

TOTAL AREA: 11271.88 sq ft • LIVING AREA: 11271.88 sq ft • FLOORS: 2

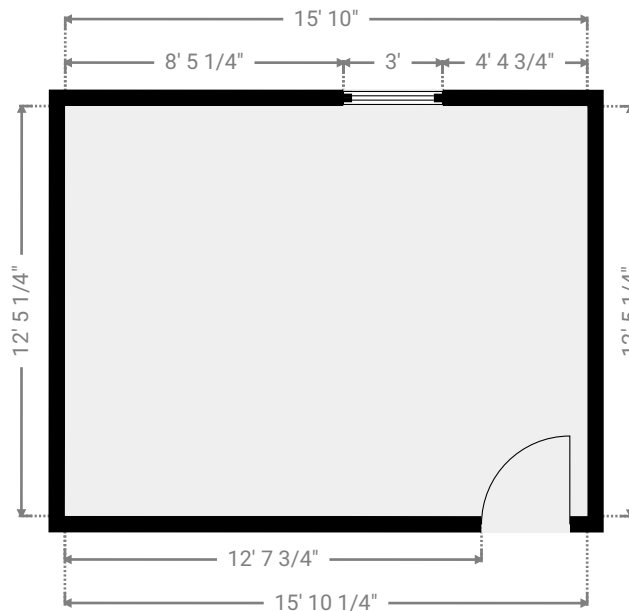
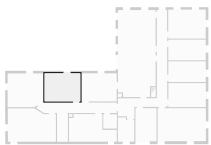
▼ Private Office
2nd Floor

WIDTH: 15' 6 1/4" • LENGTH: 12' 5"
AREA: 192.91 sq ft • PERIMETER: 55' 10 3/4"



▼ Private Office
2nd Floor

WIDTH: 15' 10 1/4" • LENGTH: 12' 5 1/4"
AREA: 196.97 sq ft • PERIMETER: 56' 6 1/2"

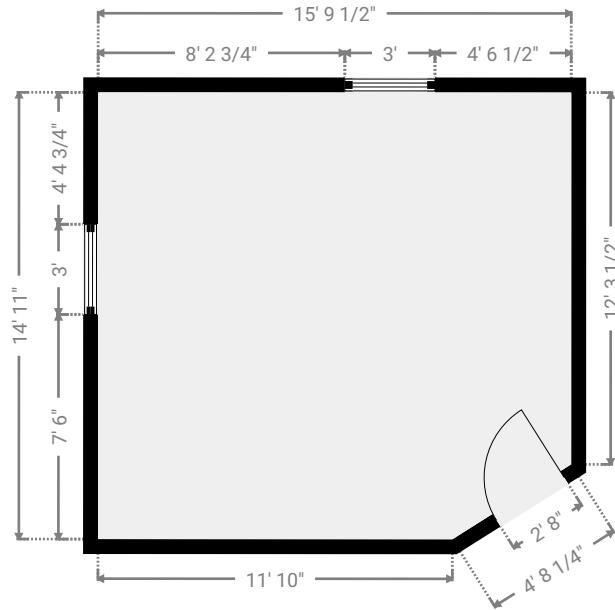
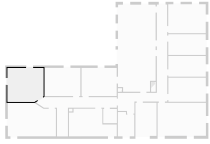


This floor plan is provided without warranty of any kind. Broken Crayon Photography, disclaims any warranty including, without limitation, satisfactory quality or accuracy of dimensions. While we do our best at being accurate, we cannot guarantee square footage calculations. While we are providing measurements and a floor plan ultimately, the real estate agent is responsible to make sure it's accurate. If you see a discrepancy, let us know immediately!

TOTAL AREA: 11271.88 sq ft • LIVING AREA: 11271.88 sq ft • FLOORS: 2

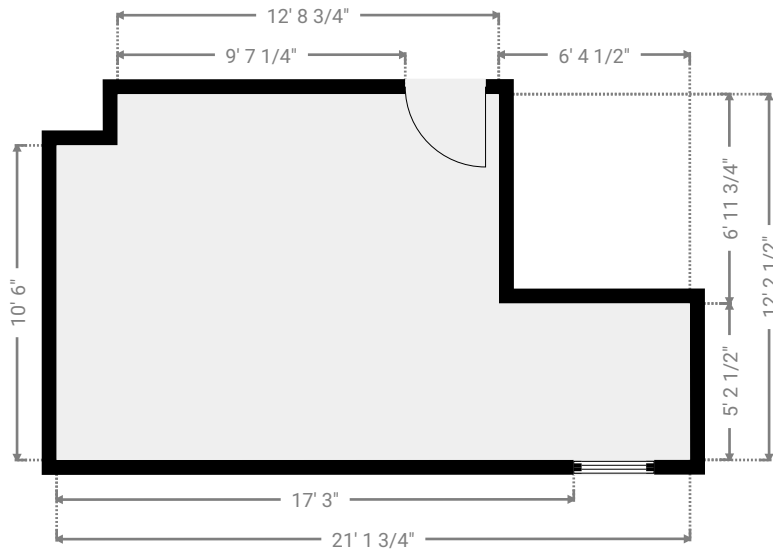
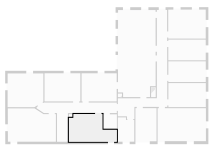
▼ **Private Office**
2nd Floor

WIDTH: 15' 9 1/2" • LENGTH: 14' 11"
AREA: 230.43 sq ft • PERIMETER: 59' 7 1/2"



▼ **Private Office**
2nd Floor

WIDTH: 21' 1 3/4" • LENGTH: 12' 2 1/2"
AREA: 209.86 sq ft • PERIMETER: 66' 8"

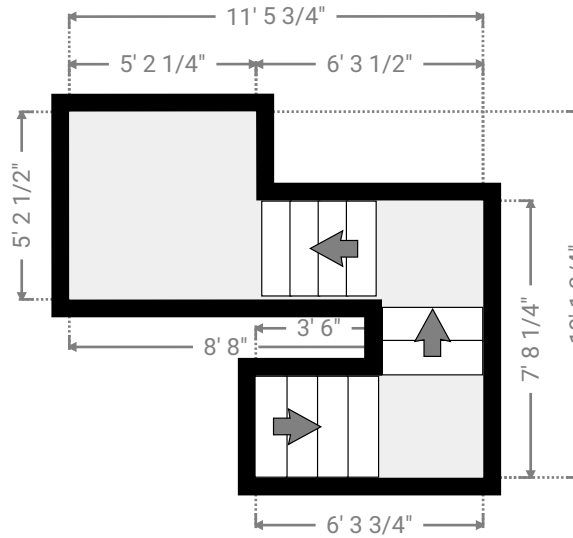
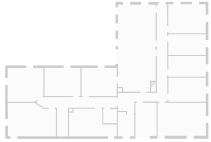


This floor plan is provided without warranty of any kind. Broken Crayon Photography, disclaims any warranty including, without limitation, satisfactory quality or accuracy of dimensions. While we do our best at being accurate, we cannot guarantee square footage calculations. While we are providing measurements and a floor plan ultimately, the real estate agent is responsible to make sure it's accurate. If you see a discrepancy, let us know immediately!

TOTAL AREA: 11271.88 sq ft • LIVING AREA: 11271.88 sq ft • FLOORS: 2

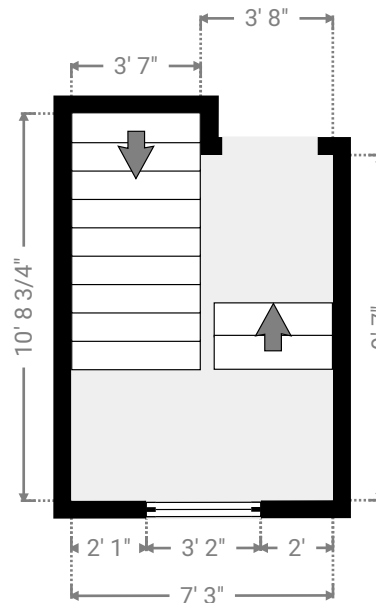
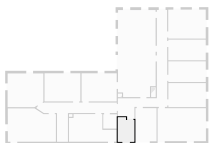
▼ **Stairway**
2nd Floor

WIDTH: 11' 5 3/4" • LENGTH: 10' 1 3/4"
AREA: 67.90 sq ft • PERIMETER: 50' 3"



▼ **Stairway**
2nd Floor

WIDTH: 7' 3" • LENGTH: 10' 8 3/4"
AREA: 73.62 sq ft • PERIMETER: 35' 11 3/4"



This floor plan is provided without warranty of any kind. Broken Crayon Photography, disclaims any warranty including, without limitation, satisfactory quality or accuracy of dimensions. While we do our best at being accurate, we cannot guarantee square footage calculations. While we are providing measurements and a floor plan ultimately, the real estate agent is responsible to make sure it's accurate. If you see a discrepancy, let us know immediately!

TOTAL AREA: 11271.88 sq ft • LIVING AREA: 11271.88 sq ft • FLOORS: 2

▼ Stairway
2nd Floor

WIDTH: 4' 10 1/4" • LENGTH: 12' 2 3/4"
AREA: 59.27 sq ft • PERIMETER: 34' 1 3/4"

