



WAREHOUSE + OFFICE SPACE FOR LEASE  
WITH EXCELLENT FREEWAY ACCESS IN A  
DESIRABLE RENO LOCATION

**±12,240**  
AVAILABLE SF

**.33/3,000**  
SPRINKLER RATING

**±3,375**  
SF OFFICE SPACE

**1998**  
YEAR BUILT



**FOR LEASE**

# SOUTHWEST COMMERCE CENTER II

7525 COLBERT DRIVE, SUITES 105-106 | RENO, NV 89511

[cushmanwakefield.com](http://cushmanwakefield.com)



FOR LEASE

# PROPERTY FEATURES

400 amps, 277 volts, 3-phase power

23' clear height

1 dock-high door

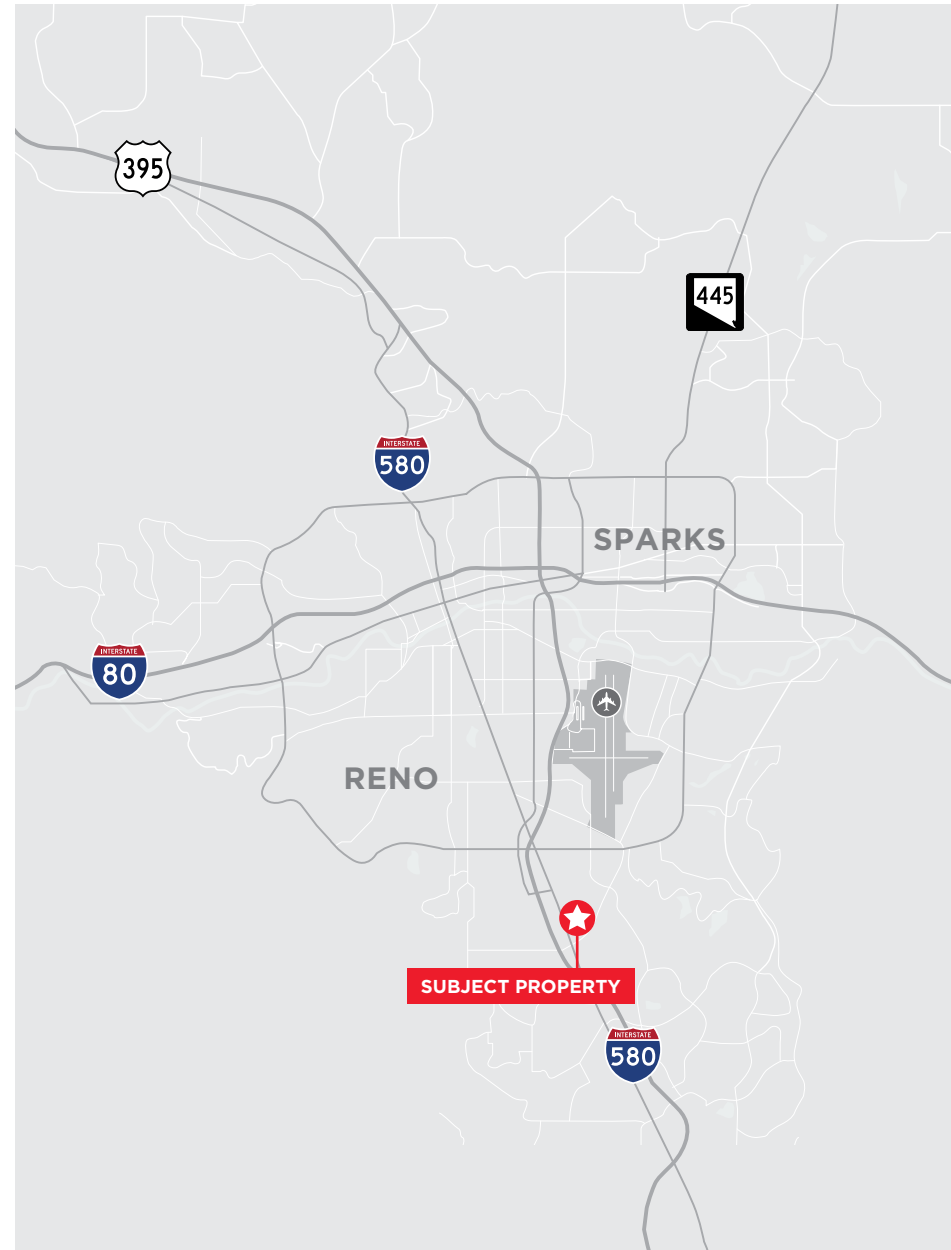
2 grade-level doors

Great South Reno location

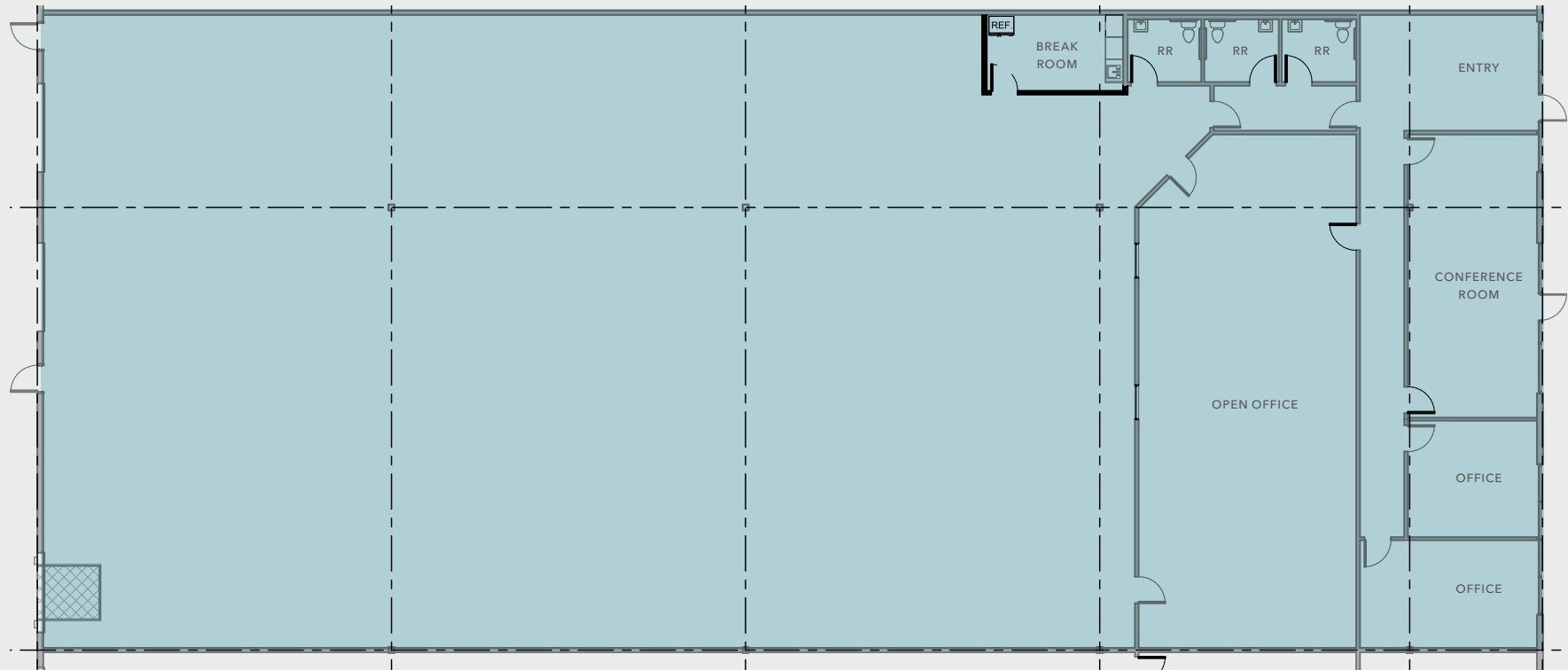
Excellent access to I-580 and McCarran loop

Professionally managed

Project is 1MM SF



# SUITES 105 & 106



# CORPORATE NEIGHBORS



FOR LEASE

# SOUTHWEST COMMERCE CENTER II

7525 COLBERT DRIVE, SUITES 105-106 | RENO, NV 89511

FOR MORE INFORMATION, PLEASE CONTACT:

**Mike Nevis, SIOR, CCIM**  
Vice Chairman  
+1 775 470 8855  
mike.nevis@cushwake.com  
Lic. # S.0061759

**Emily Jaenson**  
Industrial Specialist  
+1 847 630 4739  
emily.jaenson@cushwake.com  
Lic. # S.0203962



[cushmanwakefield.com](https://www.cushmanwakefield.com)

©2026 Cushman & Wakefield. All rights reserved. The information contained in this communication is strictly confidential. This information has been obtained from sources believed to be reliable but has not been verified. NO WARRANTY OR REPRESENTATION, EXPRESS OR IMPLIED, IS MADE AS TO THE CONDITION OF THE PROPERTY (OR PROPERTIES) REFERENCED HEREIN OR AS TO THE ACCURACY OR COMPLETENESS OF THE INFORMATION CONTAINED HEREIN, AND SAME IS SUBMITTED SUBJECT TO ERRORS, OMISSIONS, CHANGE OF PRICE, RENTAL OR OTHER CONDITIONS, WITHDRAWAL WITHOUT NOTICE, AND TO ANY SPECIAL LISTING CONDITIONS IMPOSED BY THE PROPERTY OWNER(S). ANY PROJECTIONS, OPINIONS OR ESTIMATES ARE SUBJECT TO UNCERTAINTY AND DO NOT SIGNIFY CURRENT OR FUTURE PROPERTY PERFORMANCE. COE-PM-West-03.12.2026