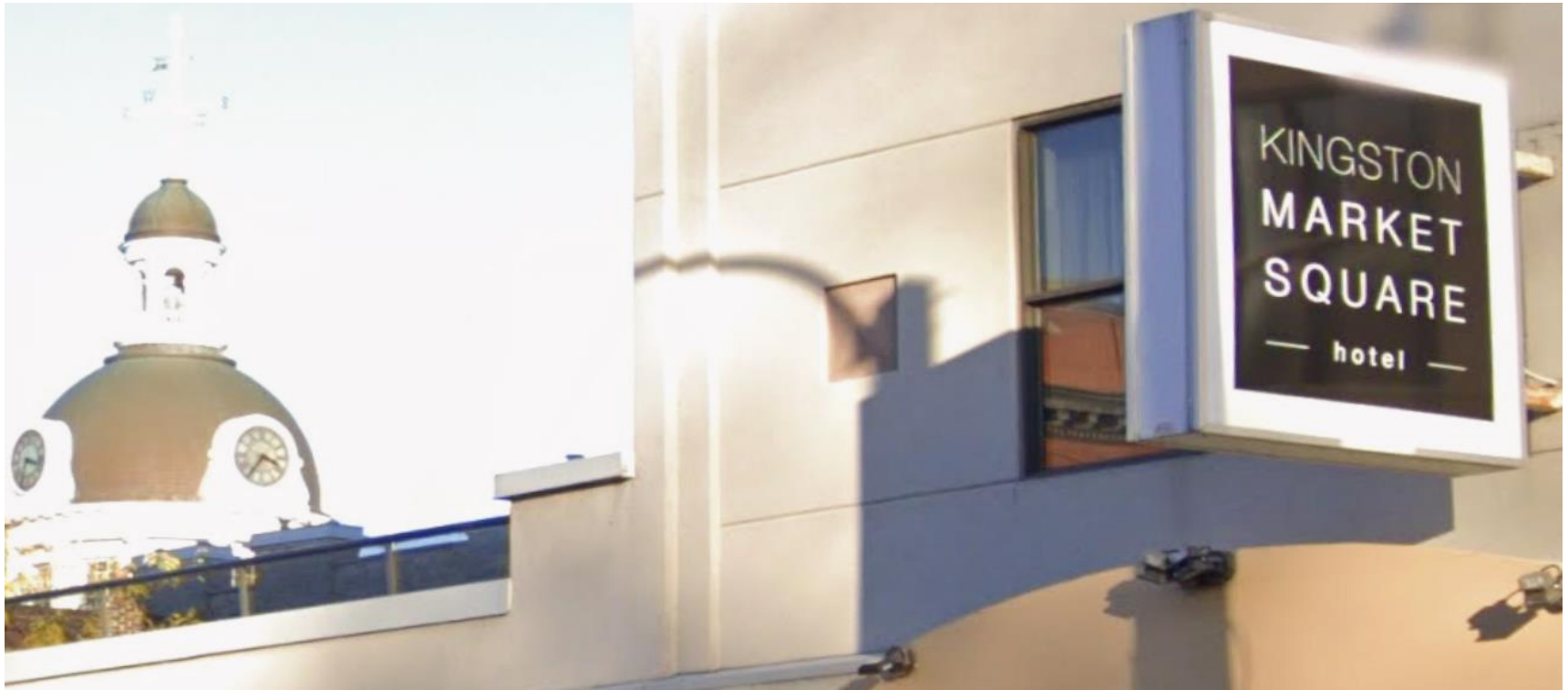


Welcome to Downtown Kingston's New Marriott Market Square Hotel

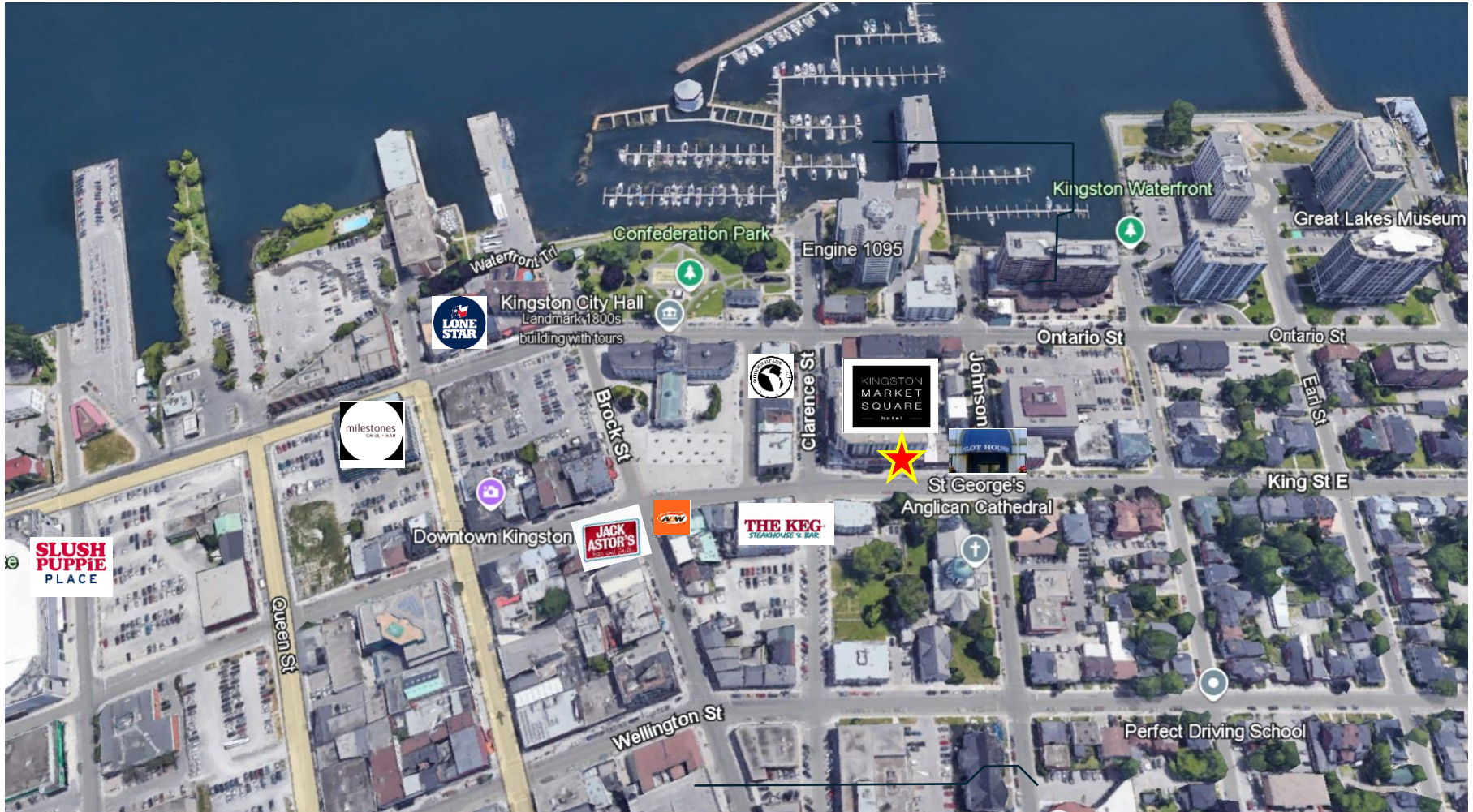
~ Space For Lease



\ 6,000 sf Hotel Restaurant Space with Street Frontage

Historic downtown Kingston and waterfront is a notable year round attraction for the over 4 million tourists annually. The newly renovated Kingston Market Square Hotel by Marriott is strategically positioned in the downtown to attract both business and leisure customers. A restaurant associated with a hotel will benefit from both business and travelers visiting the community. A community with a strong and stable economy due mainly to the very high concentration of public sector employees representing a third of Kingston's over 90,000 total workforce.. By the numbers there are 8,000 people employed within public administration. The City Hall and the Court buildings are walking distance. Nearby is Queen's University with 33,000 students and 8,100 faculty. The City has 7,000 employees in 3 major hospitals. Add tourism and there is good foundational market conditions for the hospitality industry in the City and the downtown in particular.

Neighborhood Location Map, Kingston



- 6,000 sq ft restaurant space on the ground floor in the 169 room newly renovated Marriott hotel in the heart of Downtown Kingston
- Great restaurants nearby and within a community with the highest per capita tourist draw in Canada
- Adjoining Kingston City Hall and near Queens University and 7600 seat ice and music entertainment centre and the waterfront park
- Shell Condition. Available for immediate occupancy. Surface and underground parking

Part of the Easton's Group of Hotels

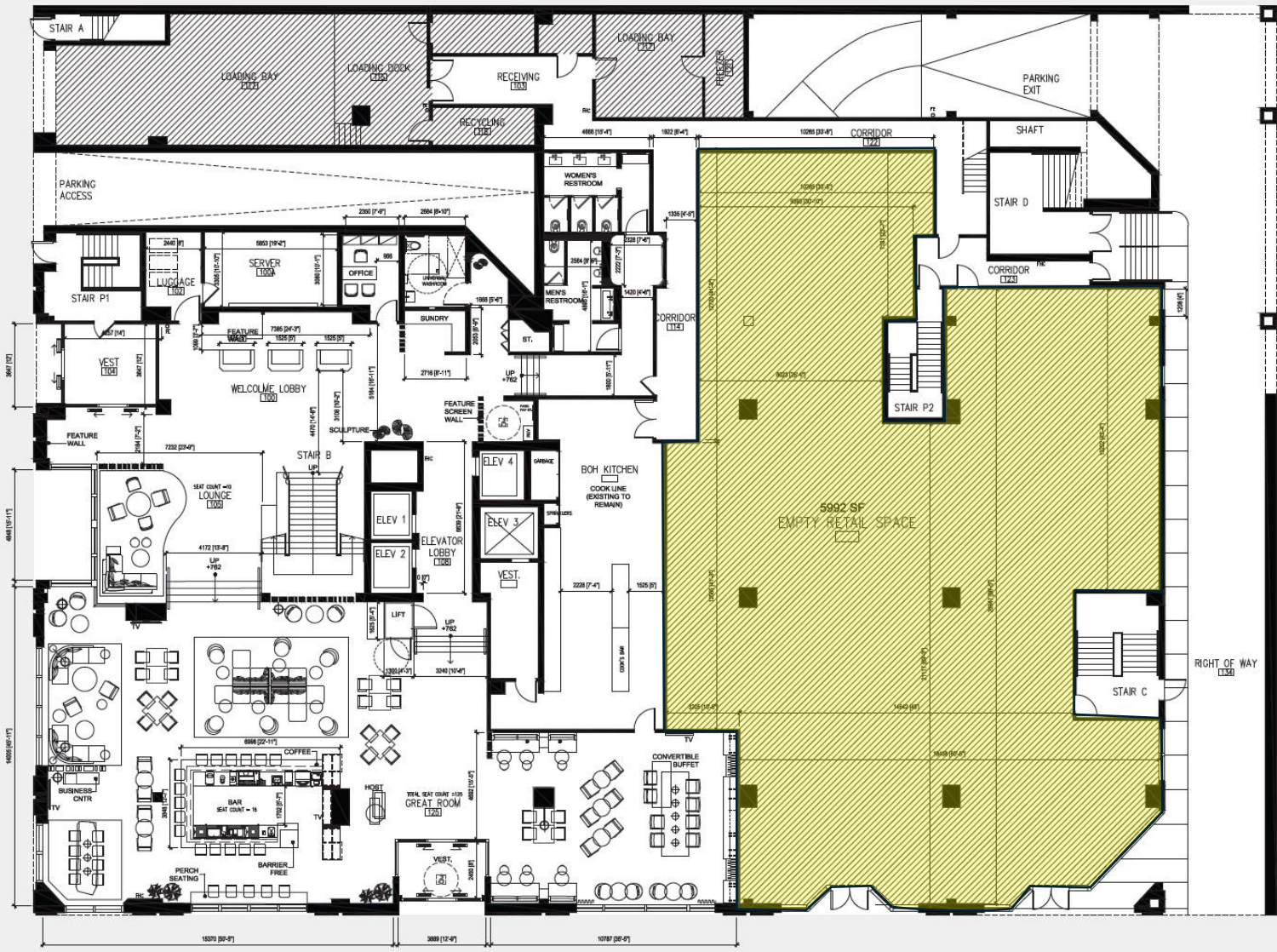
Please call Steve Babor at Sitelines Realty Inc.

steve@sitelinesrealty.com

(416) 822-9008

site|ines
Realty Inc.

CLARENCE STREET



NOTE: EXTERIOR STREET SCAPE SITE PLAN IS NOT A TRUE REPRESENTATION OF SCALE AND IS FOR INFORMATION ONLY.

KING STREET EAST


GROUND FLOOR PLAN

N
N.T.S

2023.03.09



1

 = Subject Space



site|ines
Realty Inc.