

FOR SALE
LAND

95 ACRES AT I-49 / SOUTHERN LOOP NE + SE CORNER

I-49 at Southern Loop
Shreveport, LA 71106



WWW.SEALYNET.COM

333 TEXAS STREET
SHREVEPORT, LA 71101
318.222.8700

MELISSA RIDDICK

(T) 318.698.1110

(C) 318.218.4987

MelissaR@Sealynet.com



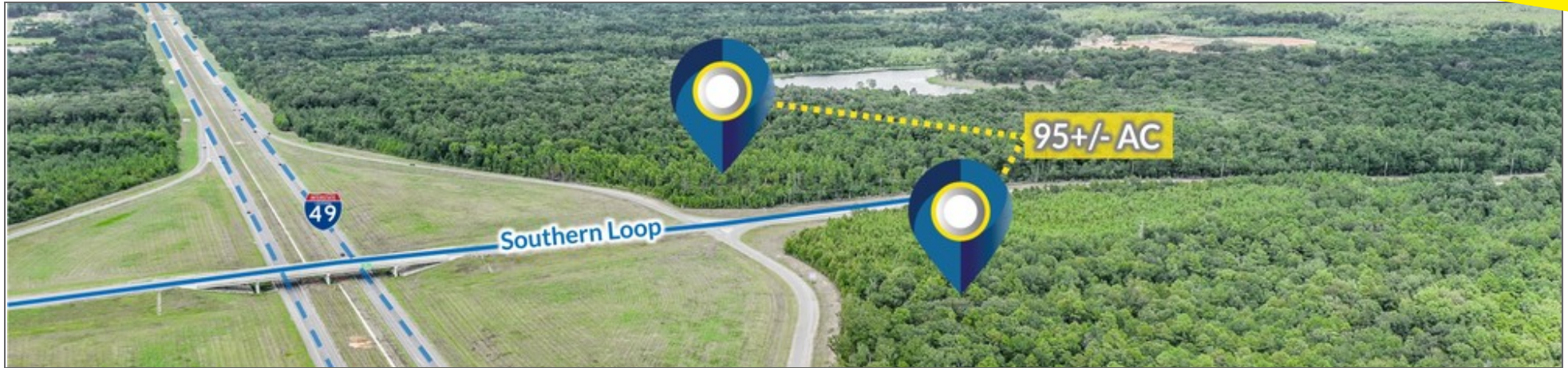
ROLAND RICOU

(T) 318.698.1109

(C) 318.773.3357

RolandR@Sealynet.com





OFFERING SUMMARY

| | |
|-------------|----------------|
| Sale Price: | \$10,000,000 |
| Lot Size: | 95.0 Acres |
| Zoning: | R-A |
| Market: | LA-Shreveport |
| Price / SF: | \$2.42 |
| Price / AC: | \$105,263 |
| Frontage: | 3,200' |
| Tax/APN: | 16142500000900 |

LOCATION OVERVIEW

Located in one of the fastest-growing areas of Shreveport, the property is ideally located on Southern Loop, directly east of Interstate 49 and west of the Southern Loop/ Wallace Lake Rd intersection (scheduled to be signalized May 2020). Surrounded by many of Shreveport's upscale subdivisions, the property is also located minutes from Kroger Marketplace, CVS Pharmacy, many restaurants, newly developed shopping centers, and more.



MELISSA RIDDICK
(T) 318.698.1110
(C) 318.218.4987
MelissaR@Sealynet.com



ROLAND RICOU
(T) 318.698.1109
(C) 318.773.3357
RolandR@Sealynet.com

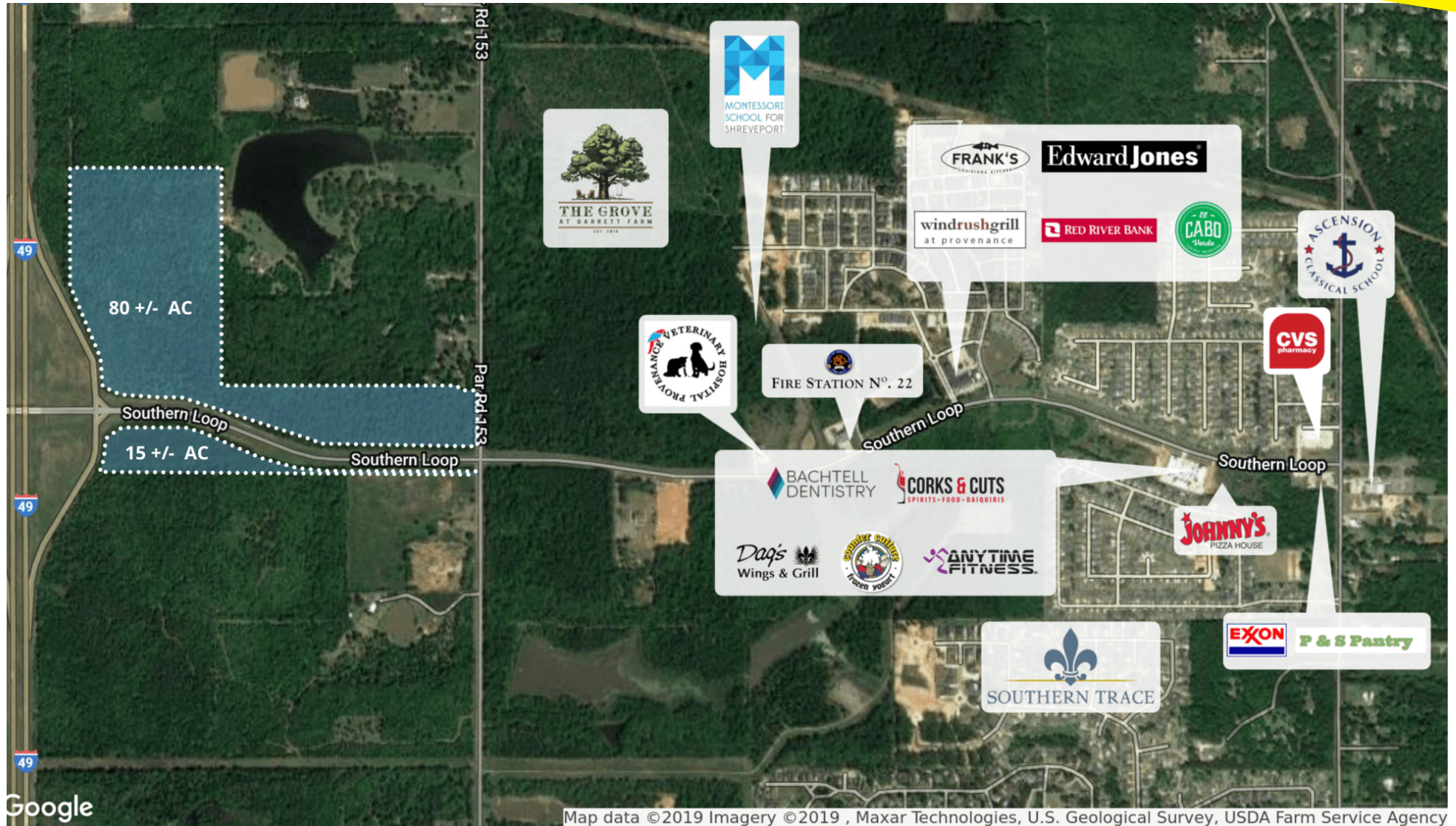
SEALY REAL ESTATE SERVICES, LLC
333 TEXAS STREET, SUITE 1050
SHREVEPORT, LA 71101

318.222.8700
WWW.SEALYNET.COM



95 ACRES AT I-49 / SOUTHERN LOOP NE + SE CORNER

I-49 at Southern Loop
Shreveport, LA 71106



MELISSA RIDDICK
 (T) 318.698.1110
 (C) 318.218.4987
 MelissaR@Sealynet.com

ROLAND RICOU
 (T) 318.698.1109
 (C) 318.773.3357
 RolandR@Sealynet.com

SEALY REAL ESTATE SERVICES, LLC
 333 TEXAS STREET, SUITE 1050
 SHREVEPORT, LA 71101

318.222.8700
WWW.SEALYNET.COM



PROPERTY OVERVIEW

This land opportunity consists of 95 total acres- 80 +/- acres northeast and 15 +/- acres southeast of Southern Loop/ Interstate 49.

The available land offers excellent visibility and frontage to I-49 and Southern Loop. There are various opportunities for property uses including Hospitality, Multi-Family, Office, Residential (Single Family), Retail, and more.

HIGHLIGHTS

- Prime Location Property with Excellent Visibility
- Perfect for Development
- Frontage on Southern Loop
- High Visibility- East Corner of I-49/Southern Loop
- Multiple Potential Uses - Hospitality, Multi-Family, Office, Residential (Single Family), Retail and More



[Click Here for Additional Information](#)

All information set forth in this brochure has been obtained from the owner, personal observation, or other reliable sources. Sealy Real Estate Services, LLC does not guarantee the accuracy of this information and makes no representations or warranties, expressed or implied, in this brochure. Information contained herein is subject to change without notice.



MELISSA RIDDICK

(T) 318.698.1110
(C) 318.218.4987
MelissaR@Sealynet.com



ROLAND RICOU

(T) 318.698.1109
(C) 318.773.3357
RolandR@Sealynet.com

SEALY REAL ESTATE SERVICES, LLC
333 TEXAS STREET, SUITE 1050
SHREVEPORT, LA 71101

318.222.8700
WWW.SEALYNET.COM