

# FINAL PLAT OF DIAMOND DRIVE COMMERCIAL PLAT

NOVEMBER 2008  
SAID SUBDIVISION LYING IN SECTIONS 3 AND 10, TOWNSHIP 9 NORTH, RANGE 21 EAST,  
IN THE CITY OF TROY, PIKE COUNTY, ALABAMA.



SCALE NOT VERIFIED

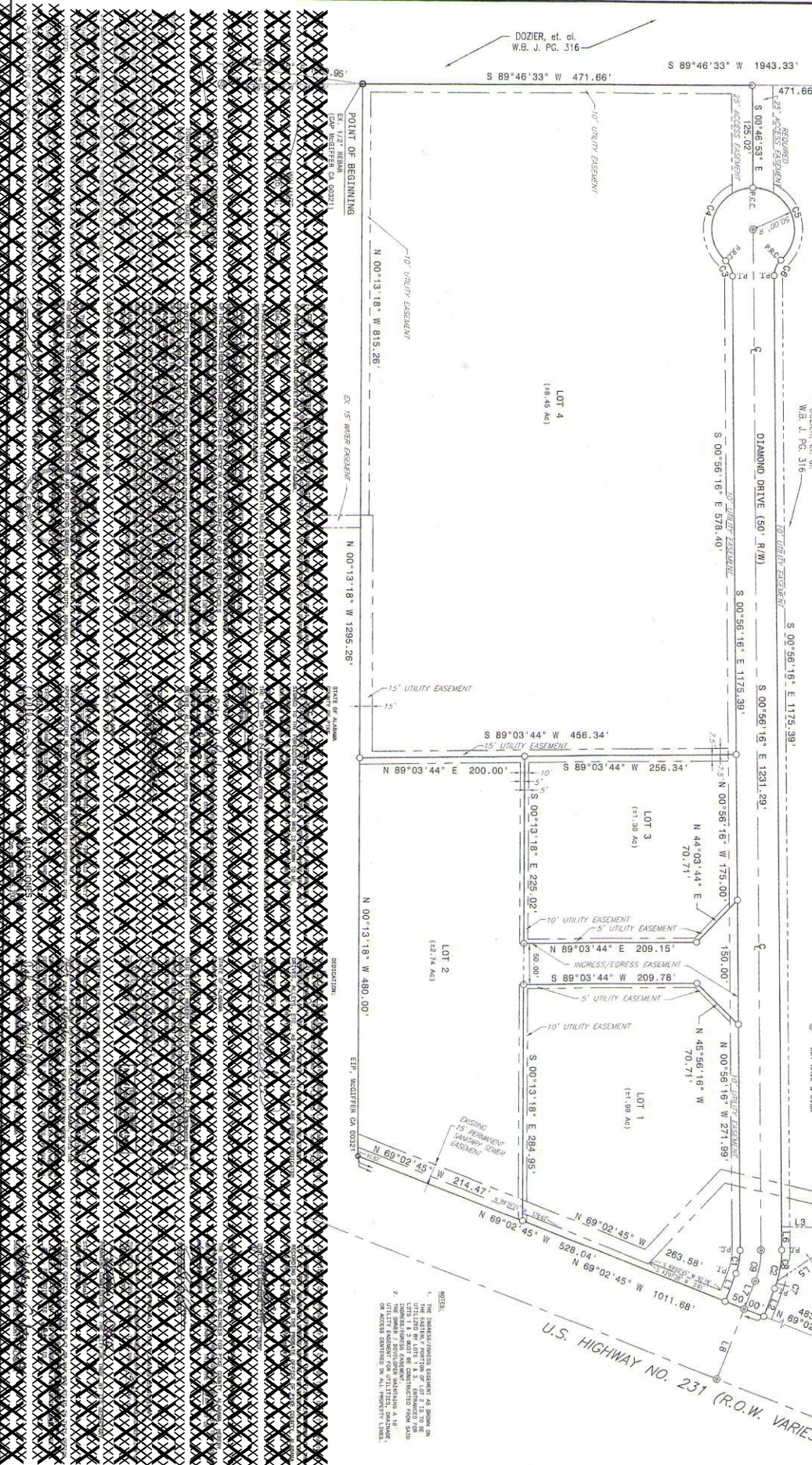
LINE #	BEARING	LENGTH
1	S 00°56'18" E	1175.39'
2	S 00°56'18" E	1231.29'
3	S 00°56'18" E	1231.29'
4	S 00°56'18" E	1231.29'
5	S 00°56'18" E	1231.29'
6	S 00°56'18" E	1231.29'
7	S 00°56'18" E	1231.29'
8	S 00°56'18" E	1231.29'
9	S 00°56'18" E	1231.29'
10	S 00°56'18" E	1231.29'
11	S 00°56'18" E	1231.29'
12	S 00°56'18" E	1231.29'
13	S 00°56'18" E	1231.29'
14	S 00°56'18" E	1231.29'
15	S 00°56'18" E	1231.29'
16	S 00°56'18" E	1231.29'
17	S 00°56'18" E	1231.29'
18	S 00°56'18" E	1231.29'
19	S 00°56'18" E	1231.29'
20	S 00°56'18" E	1231.29'
21	S 00°56'18" E	1231.29'
22	S 00°56'18" E	1231.29'
23	S 00°56'18" E	1231.29'
24	S 00°56'18" E	1231.29'
25	S 00°56'18" E	1231.29'
26	S 00°56'18" E	1231.29'
27	S 00°56'18" E	1231.29'
28	S 00°56'18" E	1231.29'
29	S 00°56'18" E	1231.29'
30	S 00°56'18" E	1231.29'
31	S 00°56'18" E	1231.29'
32	S 00°56'18" E	1231.29'
33	S 00°56'18" E	1231.29'
34	S 00°56'18" E	1231.29'
35	S 00°56'18" E	1231.29'
36	S 00°56'18" E	1231.29'
37	S 00°56'18" E	1231.29'
38	S 00°56'18" E	1231.29'
39	S 00°56'18" E	1231.29'
40	S 00°56'18" E	1231.29'
41	S 00°56'18" E	1231.29'
42	S 00°56'18" E	1231.29'
43	S 00°56'18" E	1231.29'
44	S 00°56'18" E	1231.29'
45	S 00°56'18" E	1231.29'
46	S 00°56'18" E	1231.29'
47	S 00°56'18" E	1231.29'
48	S 00°56'18" E	1231.29'
49	S 00°56'18" E	1231.29'
50	S 00°56'18" E	1231.29'
51	S 00°56'18" E	1231.29'
52	S 00°56'18" E	1231.29'
53	S 00°56'18" E	1231.29'
54	S 00°56'18" E	1231.29'
55	S 00°56'18" E	1231.29'
56	S 00°56'18" E	1231.29'
57	S 00°56'18" E	1231.29'
58	S 00°56'18" E	1231.29'
59	S 00°56'18" E	1231.29'
60	S 00°56'18" E	1231.29'
61	S 00°56'18" E	1231.29'
62	S 00°56'18" E	1231.29'
63	S 00°56'18" E	1231.29'
64	S 00°56'18" E	1231.29'
65	S 00°56'18" E	1231.29'
66	S 00°56'18" E	1231.29'
67	S 00°56'18" E	1231.29'
68	S 00°56'18" E	1231.29'
69	S 00°56'18" E	1231.29'
70	S 00°56'18" E	1231.29'
71	S 00°56'18" E	1231.29'
72	S 00°56'18" E	1231.29'
73	S 00°56'18" E	1231.29'
74	S 00°56'18" E	1231.29'
75	S 00°56'18" E	1231.29'
76	S 00°56'18" E	1231.29'
77	S 00°56'18" E	1231.29'
78	S 00°56'18" E	1231.29'
79	S 00°56'18" E	1231.29'
80	S 00°56'18" E	1231.29'
81	S 00°56'18" E	1231.29'
82	S 00°56'18" E	1231.29'
83	S 00°56'18" E	1231.29'
84	S 00°56'18" E	1231.29'
85	S 00°56'18" E	1231.29'
86	S 00°56'18" E	1231.29'
87	S 00°56'18" E	1231.29'
88	S 00°56'18" E	1231.29'
89	S 00°56'18" E	1231.29'
90	S 00°56'18" E	1231.29'
91	S 00°56'18" E	1231.29'
92	S 00°56'18" E	1231.29'
93	S 00°56'18" E	1231.29'
94	S 00°56'18" E	1231.29'
95	S 00°56'18" E	1231.29'
96	S 00°56'18" E	1231.29'
97	S 00°56'18" E	1231.29'
98	S 00°56'18" E	1231.29'
99	S 00°56'18" E	1231.29'
100	S 00°56'18" E	1231.29'

LINE #	BEARING	LENGTH
1	S 00°56'18" E	1175.39'
2	S 00°56'18" E	1231.29'
3	S 00°56'18" E	1231.29'
4	S 00°56'18" E	1231.29'
5	S 00°56'18" E	1231.29'
6	S 00°56'18" E	1231.29'
7	S 00°56'18" E	1231.29'
8	S 00°56'18" E	1231.29'
9	S 00°56'18" E	1231.29'
10	S 00°56'18" E	1231.29'
11	S 00°56'18" E	1231.29'
12	S 00°56'18" E	1231.29'
13	S 00°56'18" E	1231.29'
14	S 00°56'18" E	1231.29'
15	S 00°56'18" E	1231.29'
16	S 00°56'18" E	1231.29'
17	S 00°56'18" E	1231.29'
18	S 00°56'18" E	1231.29'
19	S 00°56'18" E	1231.29'
20	S 00°56'18" E	1231.29'
21	S 00°56'18" E	1231.29'
22	S 00°56'18" E	1231.29'
23	S 00°56'18" E	1231.29'
24	S 00°56'18" E	1231.29'
25	S 00°56'18" E	1231.29'
26	S 00°56'18" E	1231.29'
27	S 00°56'18" E	1231.29'
28	S 00°56'18" E	1231.29'
29	S 00°56'18" E	1231.29'
30	S 00°56'18" E	1231.29'
31	S 00°56'18" E	1231.29'
32	S 00°56'18" E	1231.29'
33	S 00°56'18" E	1231.29'
34	S 00°56'18" E	1231.29'
35	S 00°56'18" E	1231.29'
36	S 00°56'18" E	1231.29'
37	S 00°56'18" E	1231.29'
38	S 00°56'18" E	1231.29'
39	S 00°56'18" E	1231.29'
40	S 00°56'18" E	1231.29'
41	S 00°56'18" E	1231.29'
42	S 00°56'18" E	1231.29'
43	S 00°56'18" E	1231.29'
44	S 00°56'18" E	1231.29'
45	S 00°56'18" E	1231.29'
46	S 00°56'18" E	1231.29'
47	S 00°56'18" E	1231.29'
48	S 00°56'18" E	1231.29'
49	S 00°56'18" E	1231.29'
50	S 00°56'18" E	1231.29'
51	S 00°56'18" E	1231.29'
52	S 00°56'18" E	1231.29'
53	S 00°56'18" E	1231.29'
54	S 00°56'18" E	1231.29'
55	S 00°56'18" E	1231.29'
56	S 00°56'18" E	1231.29'
57	S 00°56'18" E	1231.29'
58	S 00°56'18" E	1231.29'
59	S 00°56'18" E	1231.29'
60	S 00°56'18" E	1231.29'
61	S 00°56'18" E	1231.29'
62	S 00°56'18" E	1231.29'
63	S 00°56'18" E	1231.29'
64	S 00°56'18" E	1231.29'
65	S 00°56'18" E	1231.29'
66	S 00°56'18" E	1231.29'
67	S 00°56'18" E	1231.29'
68	S 00°56'18" E	1231.29'
69	S 00°56'18" E	1231.29'
70	S 00°56'18" E	1231.29'
71	S 00°56'18" E	1231.29'
72	S 00°56'18" E	1231.29'
73	S 00°56'18" E	1231.29'
74	S 00°56'18" E	1231.29'
75	S 00°56'18" E	1231.29'
76	S 00°56'18" E	1231.29'
77	S 00°56'18" E	1231.29'
78	S 00°56'18" E	1231.29'
79	S 00°56'18" E	1231.29'
80	S 00°56'18" E	1231.29'
81	S 00°56'18" E	1231.29'
82	S 00°56'18" E	1231.29'
83	S 00°56'18" E	1231.29'
84	S 00°56'18" E	1231.29'
85	S 00°56'18" E	1231.29'
86	S 00°56'18" E	1231.29'
87	S 00°56'18" E	1231.29'
88	S 00°56'18" E	1231.29'
89	S 00°56'18" E	1231.29'
90	S 00°56'18" E	1231.29'
91	S 00°56'18" E	1231.29'
92	S 00°56'18" E	1231.29'
93	S 00°56'18" E	1231.29'
94	S 00°56'18" E	1231.29'
95	S 00°56'18" E	1231.29'
96	S 00°56'18" E	1231.29'
97	S 00°56'18" E	1231.29'
98	S 00°56'18" E	1231.29'
99	S 00°56'18" E	1231.29'
100	S 00°56'18" E	1231.29'

- LEGEND**
- EP EXISTING IRON PIPE
  - EX EXISTING
  - CONTRIBUTIVE
  - EXISTING CONCRETE REMNANT
  - P.T. POINT OF TANGENCY
  - P.C. POINT OF CURVATURE
  - P.R.C. POINT OF REVERSE CURVATURE
  - R/W RIGHT OF WAY
  - SET 1/2" HEAVY, W/CA-0018-US
  - SET WALL & DISK



2008-8



Project No.	28-240
Drawn By	Approved By
Checked By	CER
Date	November 10, 2008
Sheet No.	SU-1
Of 1	

**POLYENGINEERING, INC.**  
ARCHITECTURE, ENGINEERING, SOLUTIONS

Post Office Box 837 (36302)  
1935 MEADOWLAND AVENUE  
DOHAM, ALABAMA 36303  
334-793-4700  
WWW.POLYENGINEERING.COM

**DIAMOND DRIVE COMMERCIAL PLAT**  
THE CITY OF TROY,  
PIKE COUNTY, ALABAMA

These drawings are copyright and the property of PolyEngineering, Inc. No part of this report may be reproduced or transmitted in any form or by any means, electronic, mechanical, photocopying, recording, or by any information storage and retrieval system, without the prior written consent of PolyEngineering, Inc.

City of Troy, AL  
CA-0018-US