

For Sale

NAIDESCO

4 Vieux Carre Dr
East St Louis, IL 62203



Property Highlights



For Sale
20,115 SF on 4.39 AC



**Former Grocery-
Anchored Retail Center**



Excellent Accessibility
with I-64 & I-255



Sale Price:
\$850,000

For more information, please contact:



Jeff Eisenberg

d (314) 994 - 4292

c (314) 640 - 8510

jeisenberg@naidesco.com

NAIDESCO

8112 Maryland Ave, Suite 300

St. Louis, MO 63105

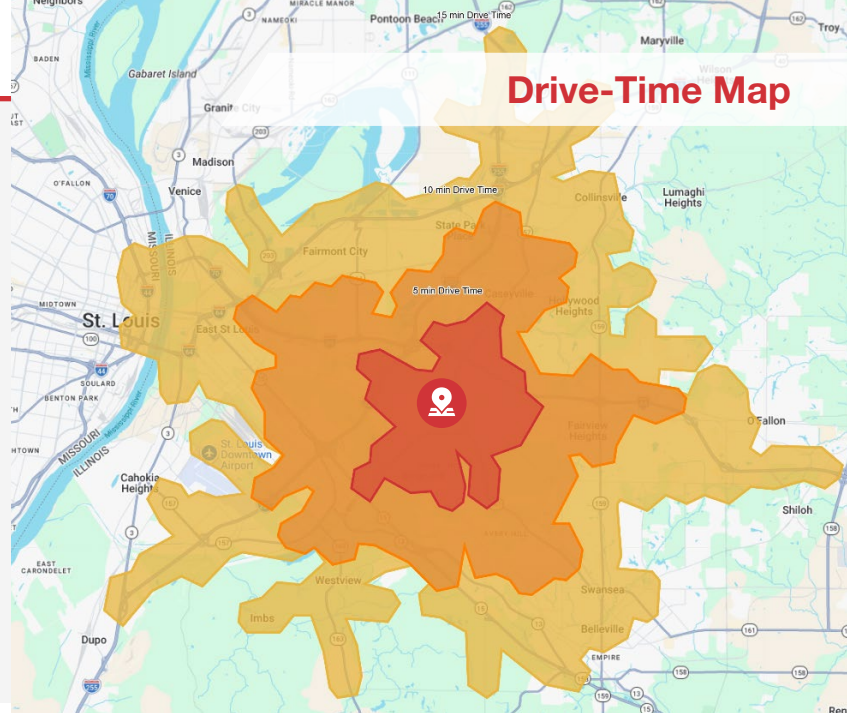
(314) 994 - 4800

naidesco.com

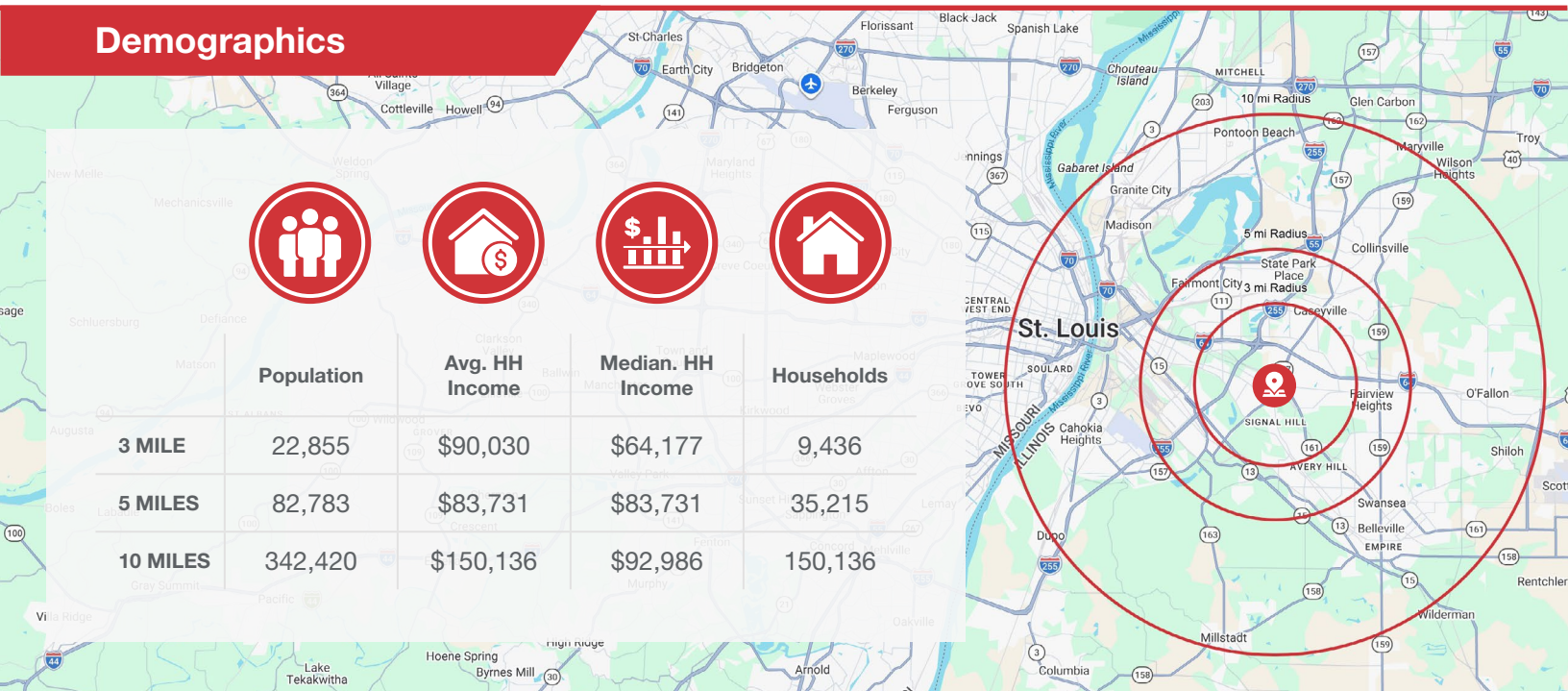
Property Features

- 20,115 SF retail center formerly occupied by Save-A-Lot; DaVita currently occupies a portion of the property, offering a value-add opportunity to lease the remaining space and increase NOI
- Ample Parking
- Signalized Corner Location at the intersection of IL Route 157 and Vieux Carre Dr
- Excellent Accessibility with I-64 located just 1.5 miles north of the property

 **Sale Price: \$850,000**

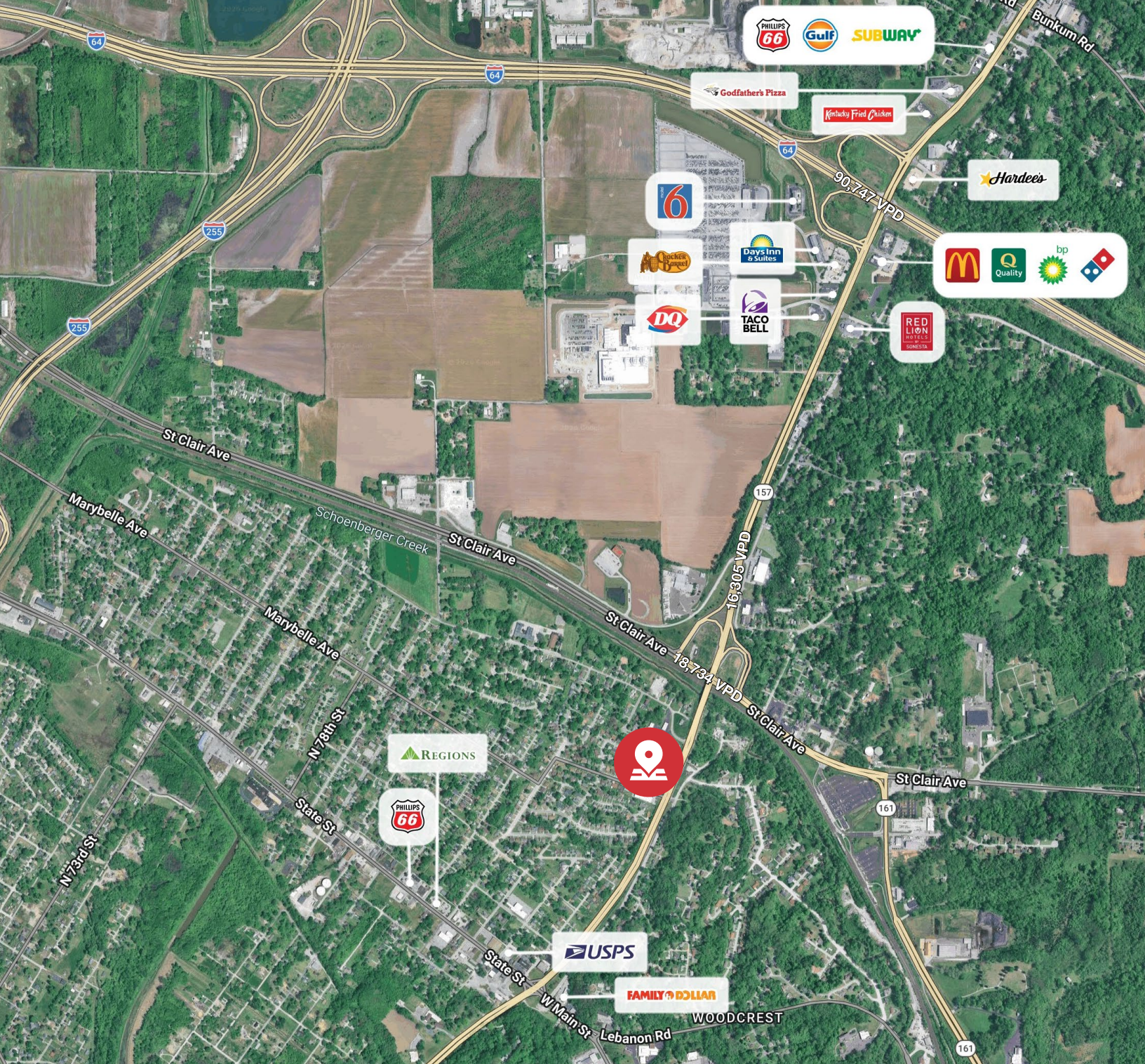


Demographics



For Sale
20,115 SF on 4.39 AC





Jeff Eisenberg

d (314) 994 - 4292

c (314) 640 - 8510

jeisenberg@naidesco.com



NAIDESCO

8112 Maryland Ave, Suite 300

St. Louis, MO 63105

(314) 994 - 4800

naidesco.com