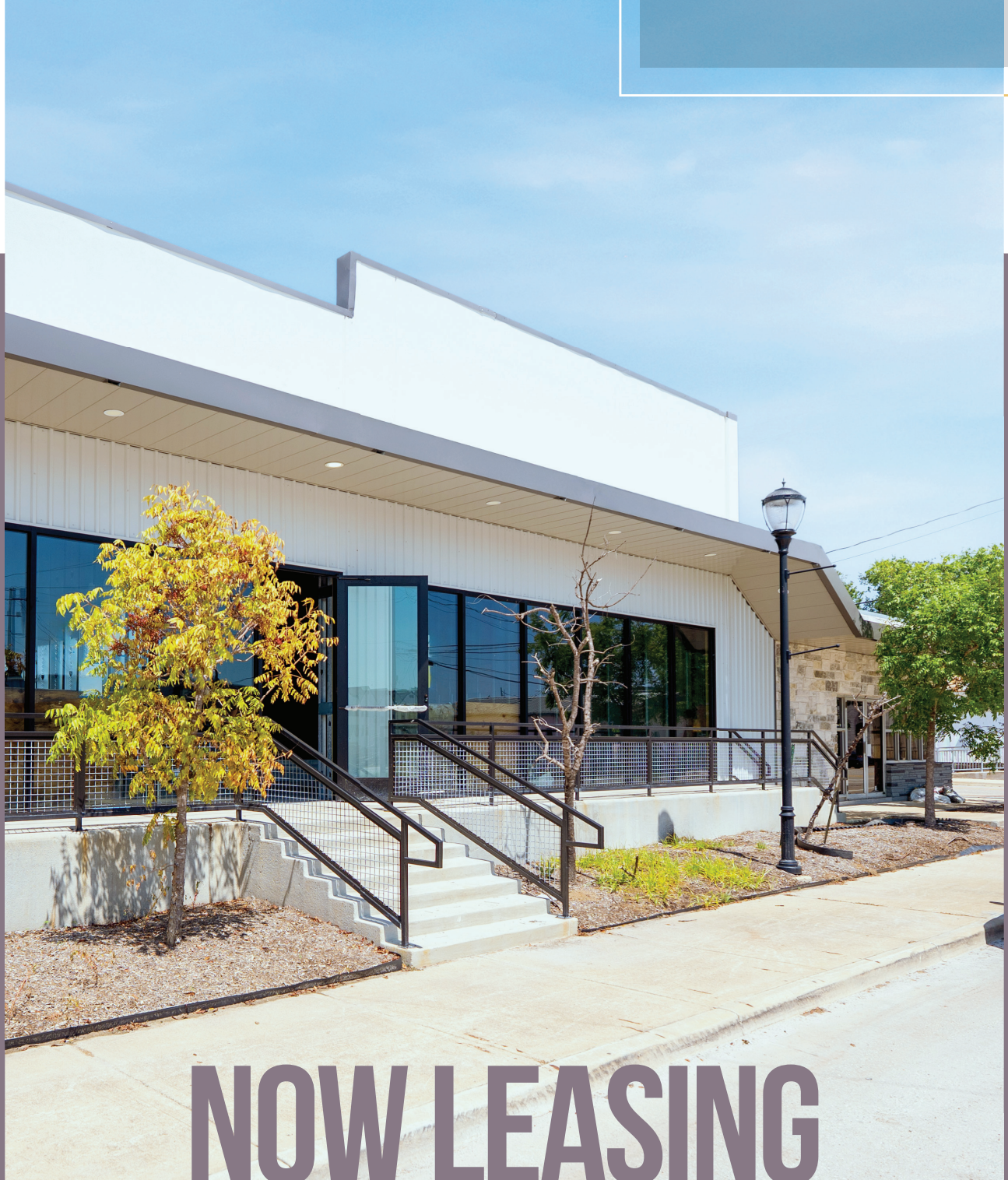


2 4 0 6
MAIN ST.

SUITE 100

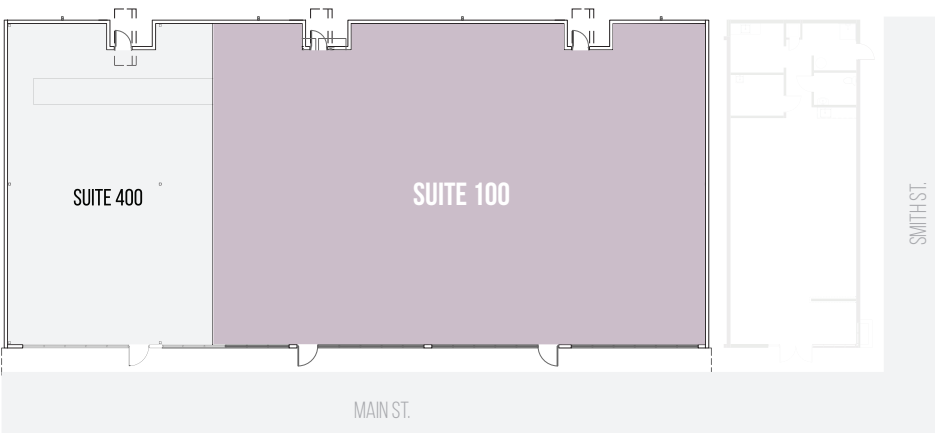
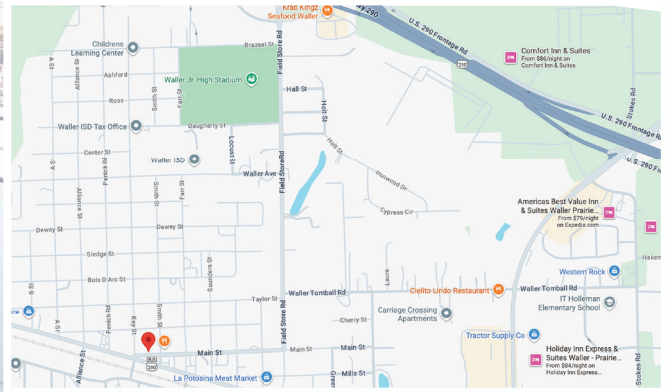
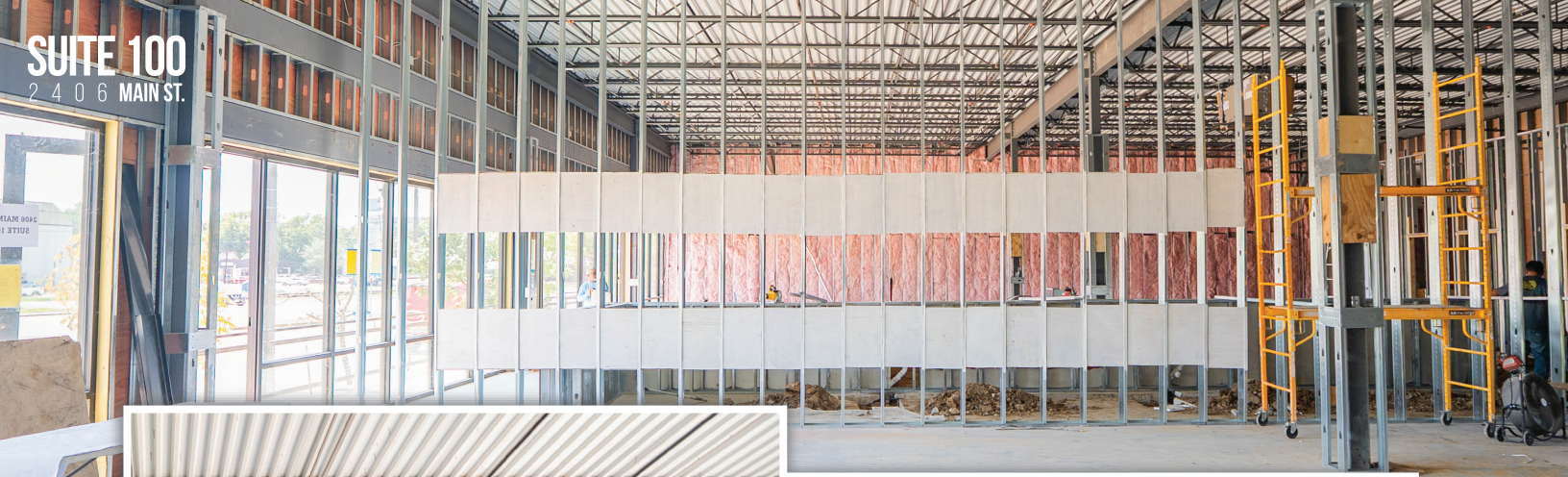
2406 MAIN ST. WALLER, TX

OFFICE / RETAIL SPACE



NOW LEASING

SUITE 100
2406 MAIN ST.



LEASE INFORMATION

TYPE: NNN

TERM: 5-10 YEARS

DISCLAIMER: THESE NUMBERS REFLECT WHAT IS CURRENTLY AVAILABLE FOR LEASE AND DO NOT DESCRIBE THE TOTAL SQUARE FOOTAGE.

PROPERTY HIGHLIGHTS

+/- 1,000 - 5,709

BUILD TO SUIT OPTIONS

CENTRAL AIR AND HEATING

HEAVY FOOT TRAFFIC

ADDITIONAL PARKING IN THE BACK

WHEELCHAIR ACCESSIBLE

MINUTES FROM HWY 290

CONTACT US IF YOU HAVE ANY QUESTIONS OR TO SCHEDULE A TOUR



936-310-3536