

RETAIL PROPERTY FOR LEASE

ARCHDALE COMMONS

11651 N Main St | High Point, NC 27263



ELENA STOYANOVA

919.802.8538

elena@cityplat.com

 CITYPLAT
COMMERCIAL REAL ESTATE

ARCHDALE COMMONS

11651 N Main St, High Point, NC 27263

RETAIL PROPERTY FOR LEASE



PROPERTY DESCRIPTION

Welcome to 11651 N Main St, High Point, NC - a prime commercial property now available for lease, perfect for retail, offices, or mixed-use. With ample parking, high visibility, and easy access, it's an ideal location for businesses seeking a bustling, high-traffic environment. Take advantage of this exceptional property and unlock its potential for your business success.

LOCATION DESCRIPTION

This busy strip center located on the four-lane Main Street of Archdale, NC, which has an average VPD of 23,800.

The property includes ±120 parking spaces for a ratio of 4.98:1.

OFFERING SUMMARY

Lease Rate:	\$1,500 - 3,500 per month (NNN)
Number of Units:	15
Available SF:	1,006 - 3,769 SF
Lot Size:	5.49 Acres
Building Size:	24,214 SF

DEMOGRAPHICS	0.5 MILES	1 MILE	3 MILES
Total Households	477	1,986	11,612
Total Population	1,173	4,787	29,885
Average HH Income	\$62,453	\$62,667	\$62,252

ELENA STOYANOVA

| 919.802.8538 | elena@cityplat.com



ARCHDALE COMMONS

11651 N Main St, High Point, NC 27263

RETAIL PROPERTY FOR LEASE



AVAILABLE SPACES

SUITE	TENANT	SIZE (SF)	LEASE TYPE	LEASE RATE	DESCRIPTION
Unit M	Available	1,006 SF	NNN	\$1,500 per month	TICAM \$263.02/mo
Unit H	Available	3,769 SF	NNN	\$3,500 per month	TICAM \$985.37/mo

ELENA STOYANOVA

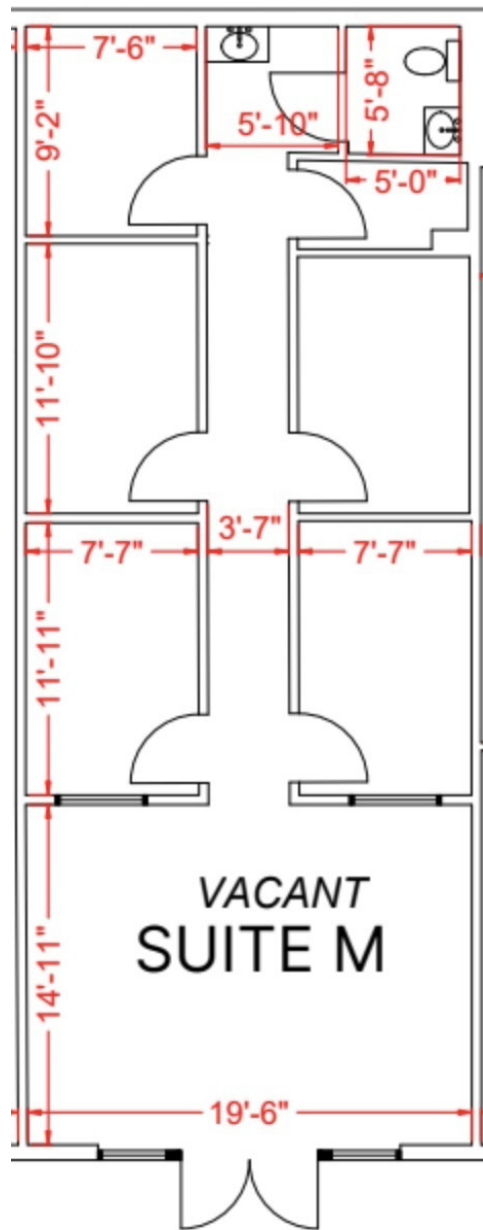
| 919.802.8538 | elena@cityplat.com

CITYPLAT
COMMERCIAL REAL ESTATE

UNIT M

11651 N Main St, High Point, NC 27263

RETAIL PROPERTY FOR LEASE



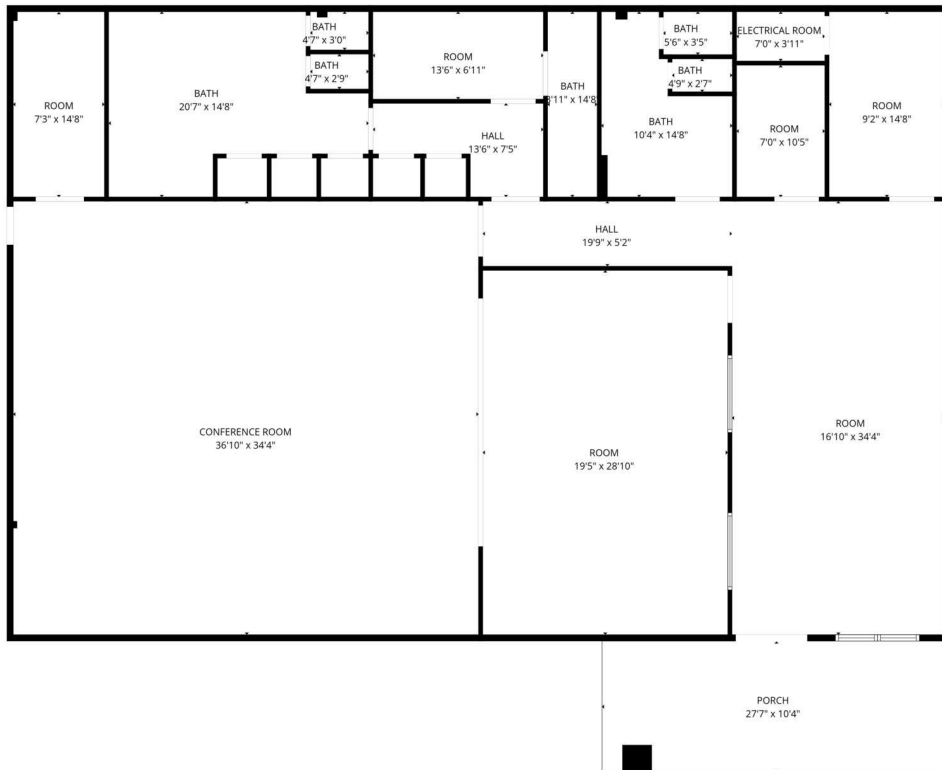
ELENA STOYANOVA
| 919.802.8538 | elena@cityplat.com

CITYPLAT
COMMERCIAL REAL ESTATE

UNIT H

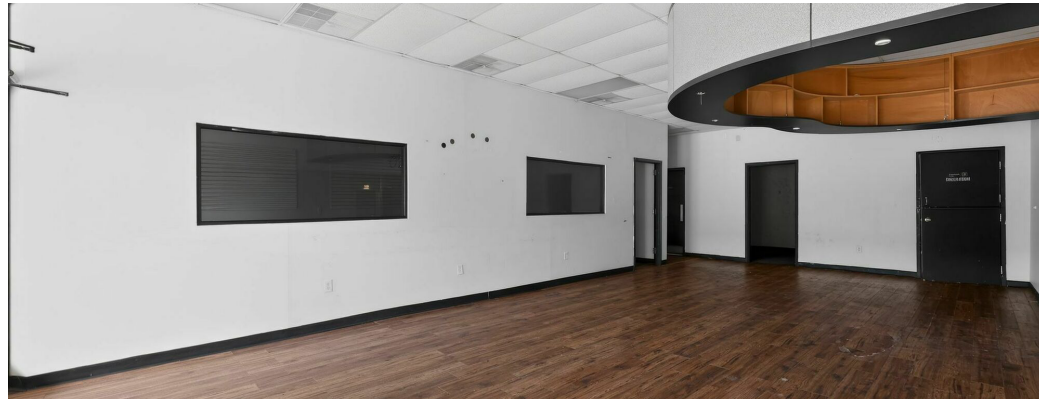
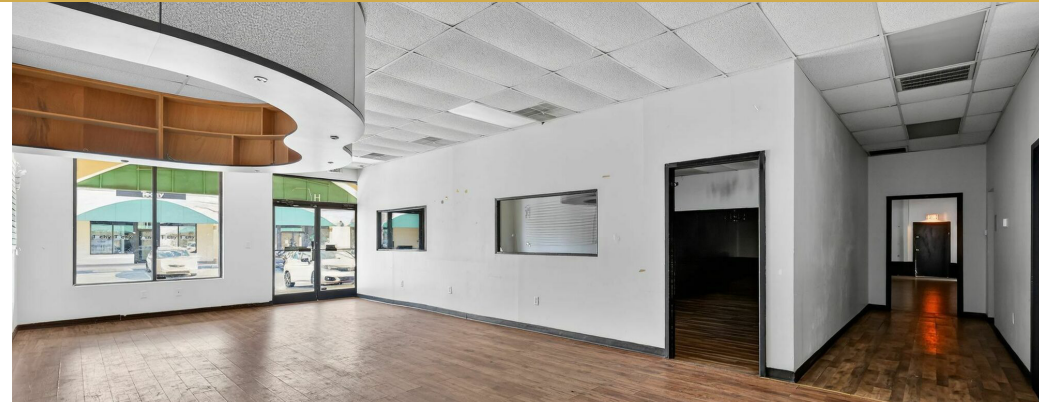
11651 N Main St, High Point, NC 27263

RETAIL PROPERTY FOR LEASE



Total GLA: 3726 sq. ft | Total: 4044 sq. ft
1st floor: 3726 sq. ft (Excluded areas 318 sq. ft)

FLOOR PLAN CREATED BY CUBICASA APP. MEASUREMENTS DEEMED HIGHLY RELIABLE BUT NOT GUARANTEED.



ELENA STOYANOVA
| 919.802.8538 | elena@cityplat.com

CITYPLAT
COMMERCIAL REAL ESTATE

107 Fayetteville , Suite 100, Raleigh, NC 27601 • 919.650.2643 • cityplat.com

ARCHDALE COMMONS

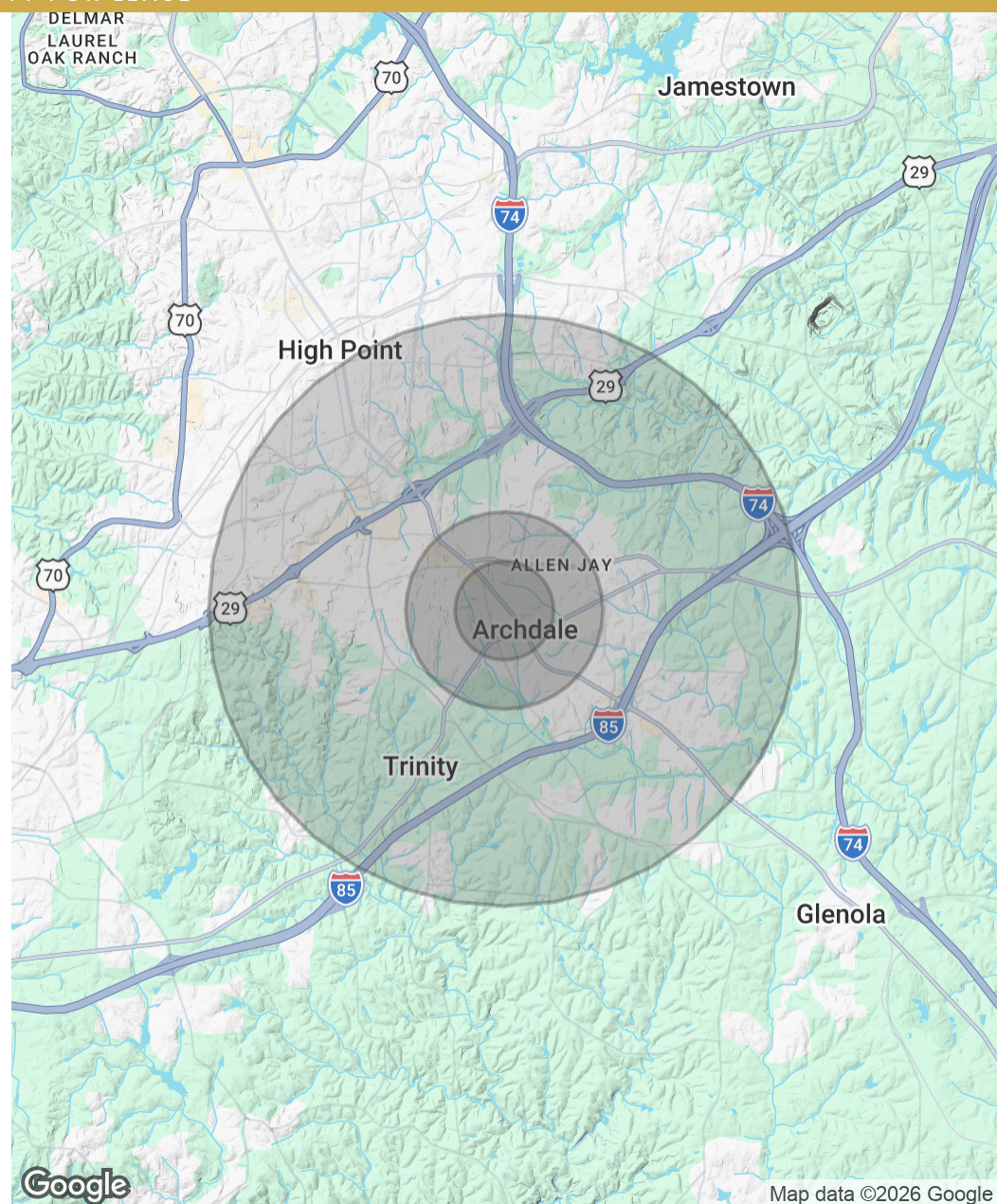
11651 N Main St, High Point, NC 27263

RETAIL PROPERTY FOR LEASE

POPULATION	0.5 MILES	1 MILE	3 MILES
Total Population	1,173	4,787	29,885
Average Age	40.8	40.9	39.0
Average Age (Male)	41.6	41.2	38.8
Average Age (Female)	39.1	39.7	40.1

HOUSEHOLDS & INCOME	0.5 MILES	1 MILE	3 MILES
Total Households	477	1,986	11,612
# of Persons per HH	2.5	2.4	2.6
Average HH Income	\$62,453	\$62,667	\$62,252
Average House Value	\$139,664	\$133,451	\$163,770

2023 American Community Survey (ACS)



ELENA STOYANOVA

| 919.802.8538 | elena@cityplat.com

CITYPLAT
COMMERCIAL REAL ESTATE

ARCHDALE COMMONS

11651 N Main St, High Point, NC 27263

RETAIL PROPERTY FOR LEASE

CONFIDENTIALITY & DISCLAIMER

All materials and information received or derived from CityPlat Brokerage its directors, officers, agents, advisors, affiliates and/or any third party sources are provided without representation or warranty as to completeness, veracity, or accuracy, condition of the property, compliance or lack of compliance with applicable governmental requirements, developability or suitability, financial performance of the property, projected financial performance of the property for any party's intended use or any and all other matters.

Neither CityPlat Brokerage its directors, officers, agents, advisors, or affiliates makes any representation or warranty, express or implied, as to accuracy or completeness of the any materials or information provided, derived, or received. Materials and information from any source, whether written or verbal, that may be furnished for review are not a substitute for a party's active conduct of its own due diligence to determine these and other matters of significance to such party. CityPlat Brokerage will not investigate or verify any such matters or conduct due diligence for a party unless otherwise agreed in writing.

EACH PARTY SHALL CONDUCT ITS OWN INDEPENDENT INVESTIGATION AND DUE DILIGENCE.

Any party contemplating or under contract or in escrow for a transaction is urged to verify all information and to conduct their own inspections and investigations including through appropriate third party independent professionals selected by such party. All financial data should be verified by the party including by obtaining and reading applicable documents and reports and consulting appropriate independent professionals. CityPlat Brokerage makes no warranties and/or representations regarding the veracity, completeness, or relevance of any financial data or assumptions. CityPlat Brokerage does not serve as a financial advisor to any party regarding any proposed transaction. All data and assumptions regarding financial performance, including that used for financial modeling purposes, may differ from actual data or performance. Any estimates of market rents and/or projected rents that may be provided to a party do not necessarily mean that rents can be established at or increased to that level. Parties must evaluate any applicable contractual and governmental limitations as well as market conditions, vacancy factors and other issues in order to determine rents from or for the property.

Legal questions should be discussed by the party with an attorney. Tax questions should be discussed by the party with a certified public accountant or tax attorney. Title questions should be discussed by the party with a title officer or attorney. Questions regarding the condition of the property and whether the property complies with applicable governmental requirements should be discussed by the party with appropriate engineers, architects, contractors, other consultants and governmental agencies. All properties and services are marketed by CityPlat Brokerage in compliance with all applicable fair housing and equal opportunity laws.

ELENA STOYANOVA

| 919.802.8538 | elena@cityplat.com

