

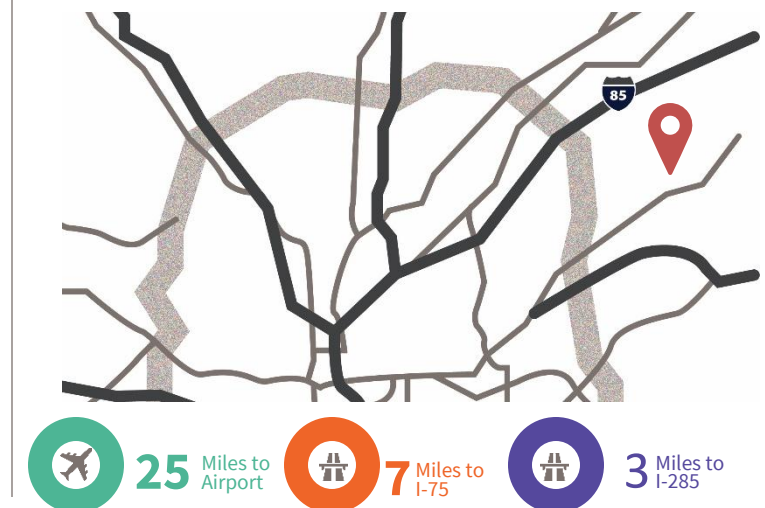


## 2040 Steel Drive, Suite M, Tucker, GA

### Opportunity

- 11,673 sf available
- 1,332 sf office space
- 57,457 total building size
- 20' clear height
- 27' x 28' bay size
- Doors – 1 (10'x10') DI; 3 (10'x10') DH

### Location



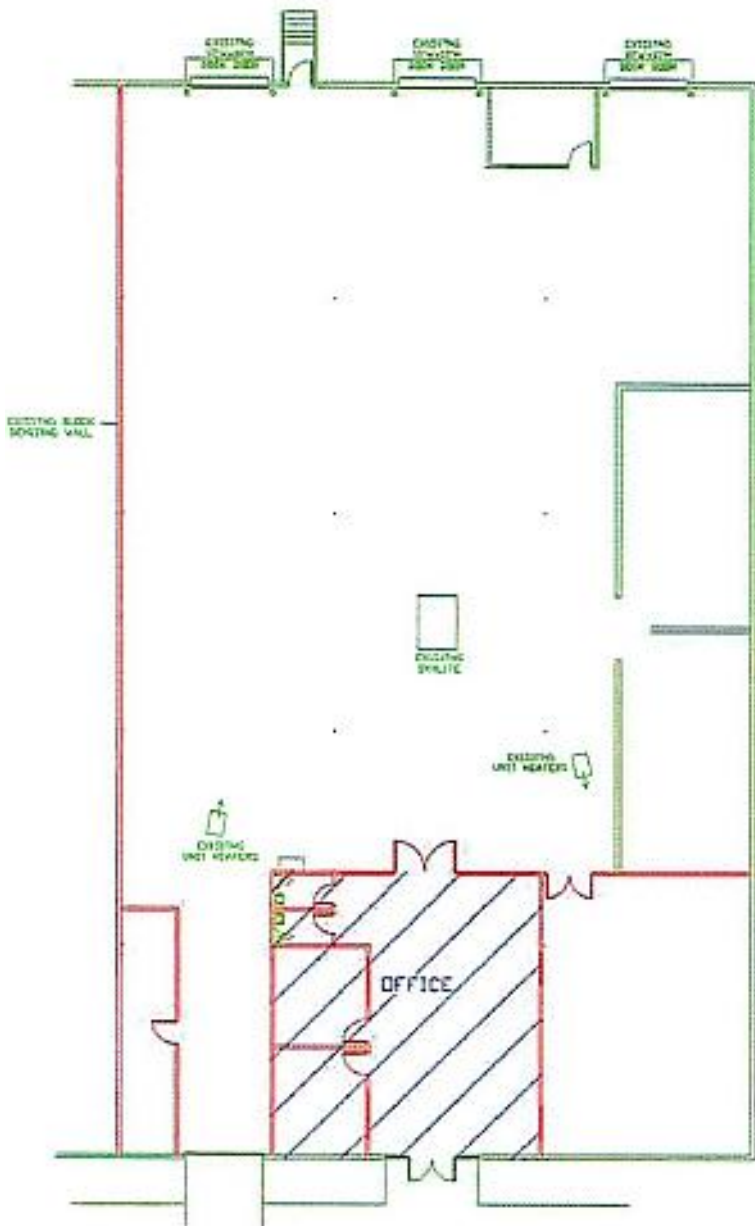
**For further  
information**

**Benjamin A. Parker, SIOR**  
Senior Vice President  
+1 404 409 5678

[avisonyoung.com](http://avisonyoung.com)

# Industrial For Lease

Steel Drive / 2040 Steel Drive, Suite M, Tucker, GA



## For further information



**Benjamin A. Parker, SIOR**  
Senior Vice President  
+1 404 409 5678  
ben.parker@avisonyoung.com

Owned by:

