

# 340 VICTORY LN

Lincoln, NE 68528



## PROPERTY DESCRIPTION

Conveniently located off of West 'O' Street. This office space provide ample parking and easy access in and out of downtown Lincoln.

SPACES	LEASE RATE	SPACE SIZE
340 Victory Ln Suite 210	\$14.00 SF/yr	3,362 SF
340 Victory Ln Suite 230	\$14.00 SF/yr	2,975 SF
340 Victory Ln Suite 250	\$14.00 SF/yr	7,409 SF
340 Victory Ln Suite 260	\$14.00 SF/yr	3,227 SF

## OFFERING SUMMARY

Lease Rate	\$14.00 SF/yr (NNN)
Total Available SF	16,973 SF
Lot Size	1,280,192 SF
Building Size	234,701 SF

## DEMOGRAPHICS

	1 MILE	2 MILES	3 MILES
Total Households	2,225	15,906	36,042
Total Population	4,922	39,364	85,811
Average HH Income	\$49,964	\$45,754	\$53,127



**TOM GIFFORD**  
Broker  
402.326.2413  
TJGifford@SpeedwayProperties.com



**KERI BOWER**  
Commercial Leasing Agent  
402.323.3127  
kabower@speedwayproperties.com

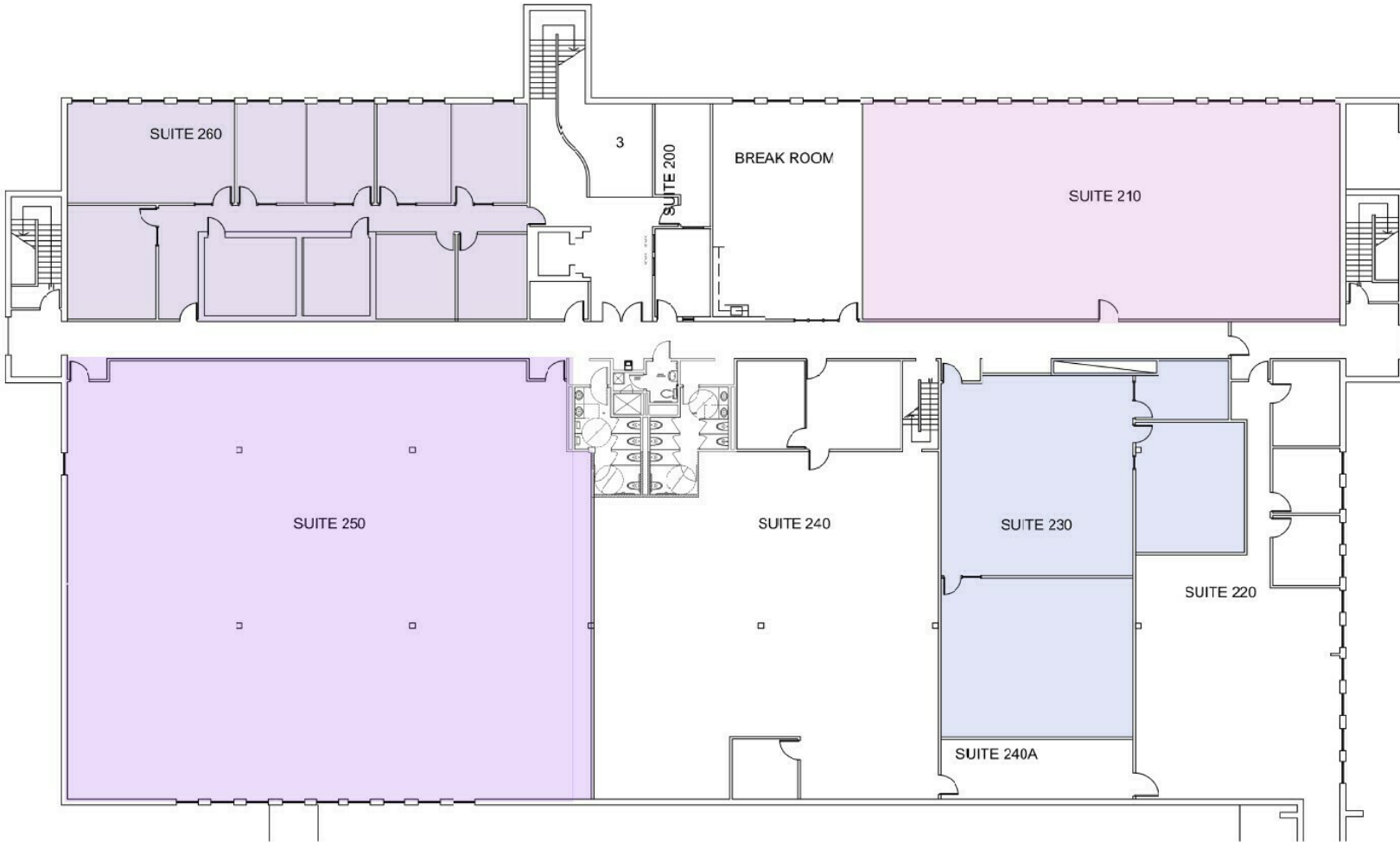


**LAUREN COOK**  
Commercial Leasing Agent  
402.323.3126  
lmcook@speedwayproperties.com



# 340 VICTORY LN

Lincoln, NE 68528



**TOM GIFFORD**  
Broker  
402.326.2413  
TJGifford@SpeedwayProperties.com



**KERI BOWER**  
Commercial Leasing Agent  
402.323.3127  
kabower@speedwayproperties.com



**LAUREN COOK**  
Commercial Leasing Agent  
402.323.3126  
lmcook@speedwayproperties.com



Office Building For Lease

340 VICTORY LN

Lincoln, NE 68528



**TOM GIFFORD**  
Broker  
402.326.2413  
TJGifford@SpeedwayProperties.com



**KERI BOWER**  
Commercial Leasing Agent  
402.323.3127  
kabower@speedwayproperties.com



**LAUREN COOK**  
Commercial Leasing Agent  
402.323.3126  
lmcook@speedwayproperties.com

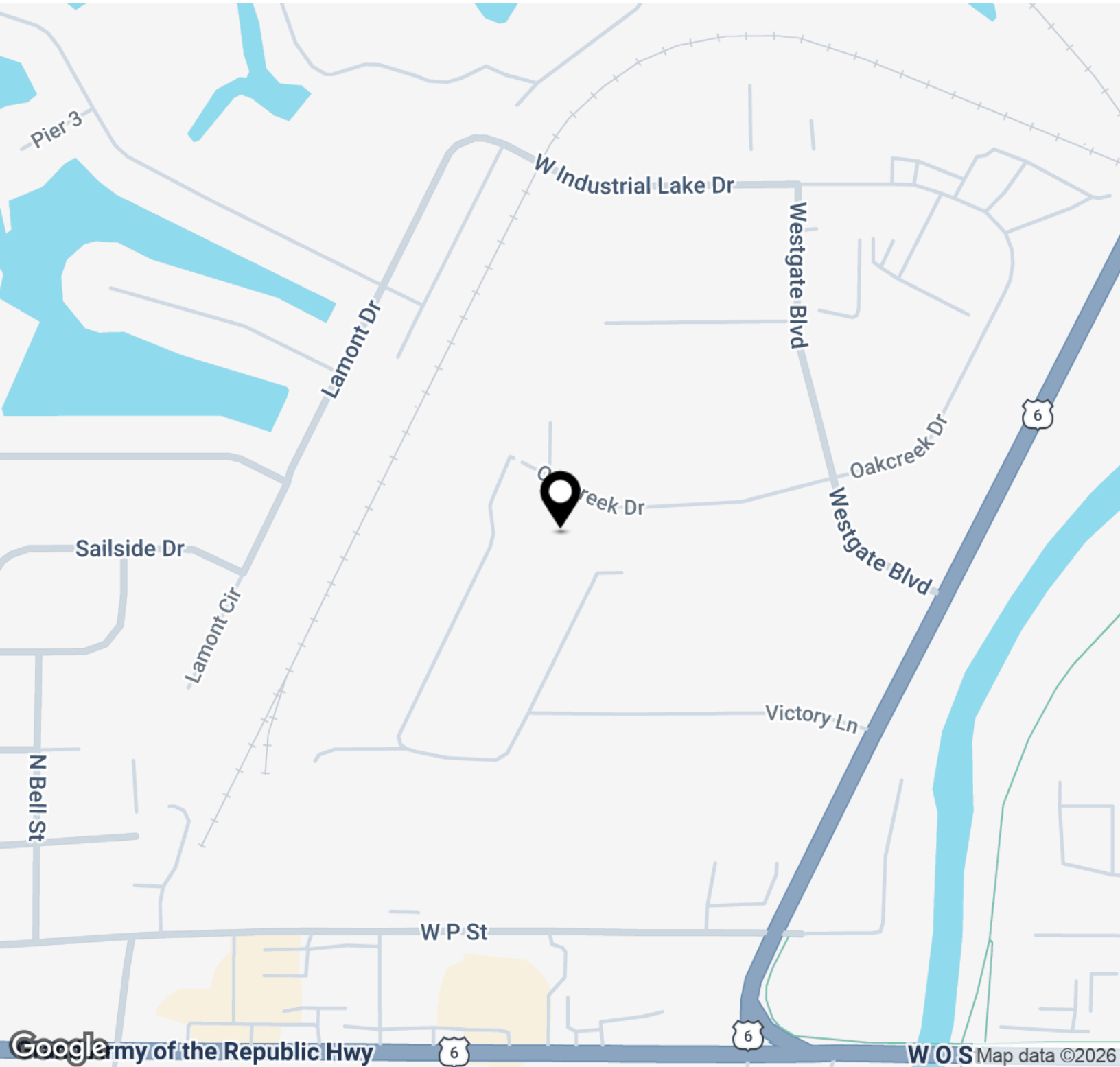


SpeedwayProperties.com

Office Building For Lease

# 340 VICTORY LN

Lincoln, NE 68528



**TOM GIFFORD**  
Broker  
402.326.2413  
TJGifford@SpeedwayProperties.com



**KERI BOWER**  
Commercial Leasing Agent  
402.323.3127  
kabower@speedwayproperties.com

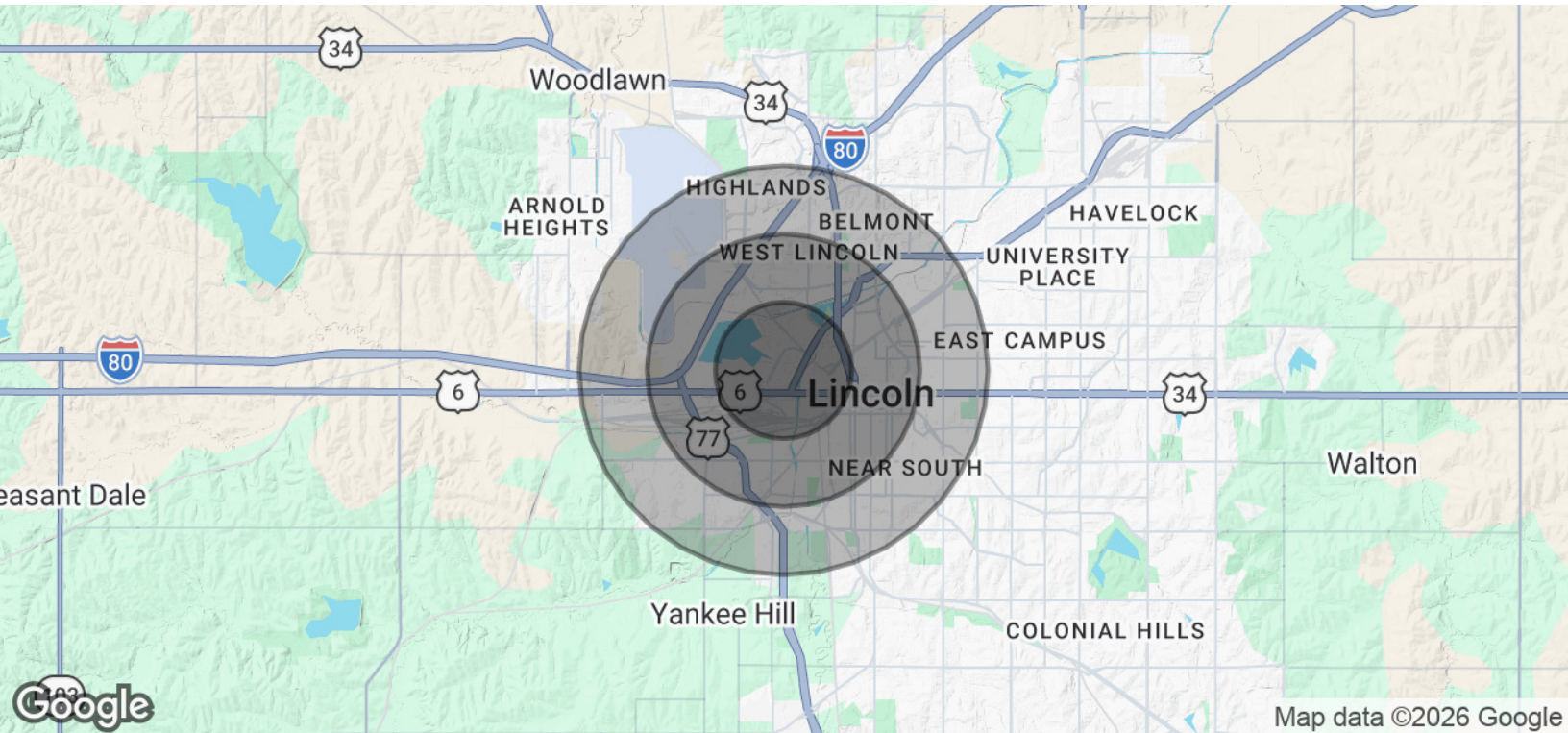


**LAUREN COOK**  
Commercial Leasing Agent  
402.323.3126  
lmcook@speedwayproperties.com



# 340 VICTORY LN

Lincoln, NE 68528



POPULATION	1 MILE	2 MILES	3 MILES
Total Population	4,922	39,364	85,811
Average Age	28.6	27.0	29.5
Average Age (Male)	28.2	28.0	29.9
Average Age (Female)	30.4	27.0	29.6
HOUSEHOLDS & INCOME	1 MILE	2 MILES	3 MILES
Total Households	2,225	15,906	36,042
# of Persons per HH	2.2	2.5	2.4
Average HH Income	\$49,964	\$45,754	\$53,127
Average House Value	\$150,128	\$112,881	\$125,457

2020 American Community Survey (ACS)



**TOM GIFFORD**  
 Broker  
 402.326.2413  
 TJGifford@SpeedwayProperties.com



**KERI BOWER**  
 Commercial Leasing Agent  
 402.323.3127  
 kabower@speedwayproperties.com



**LAUREN COOK**  
 Commercial Leasing Agent  
 402.323.3126  
 lmcook@speedwayproperties.com

