

PROJECT:

PILGRIM MILL PLANNING

FORSYTH COUNTY, GA

REVISIONS	DATE

DRAWING TITLE

SITE PLAN

DWG FILE: WJ		DRAWING NO. SK-1
DRAWN BY: RG	PROJECT NO. 5759.00	
DATE: 01/24/24	SCALE: 1"=XX'	

SITE DATA:

AREA: 3.527 AC
ROW TO BE DEDICATED: ±0.15 AC
REMAINDER SITE: ±3.38 AC

PROPOSED C STORE: 3,000 SF

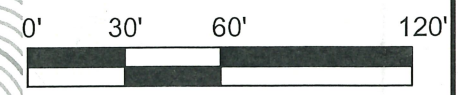
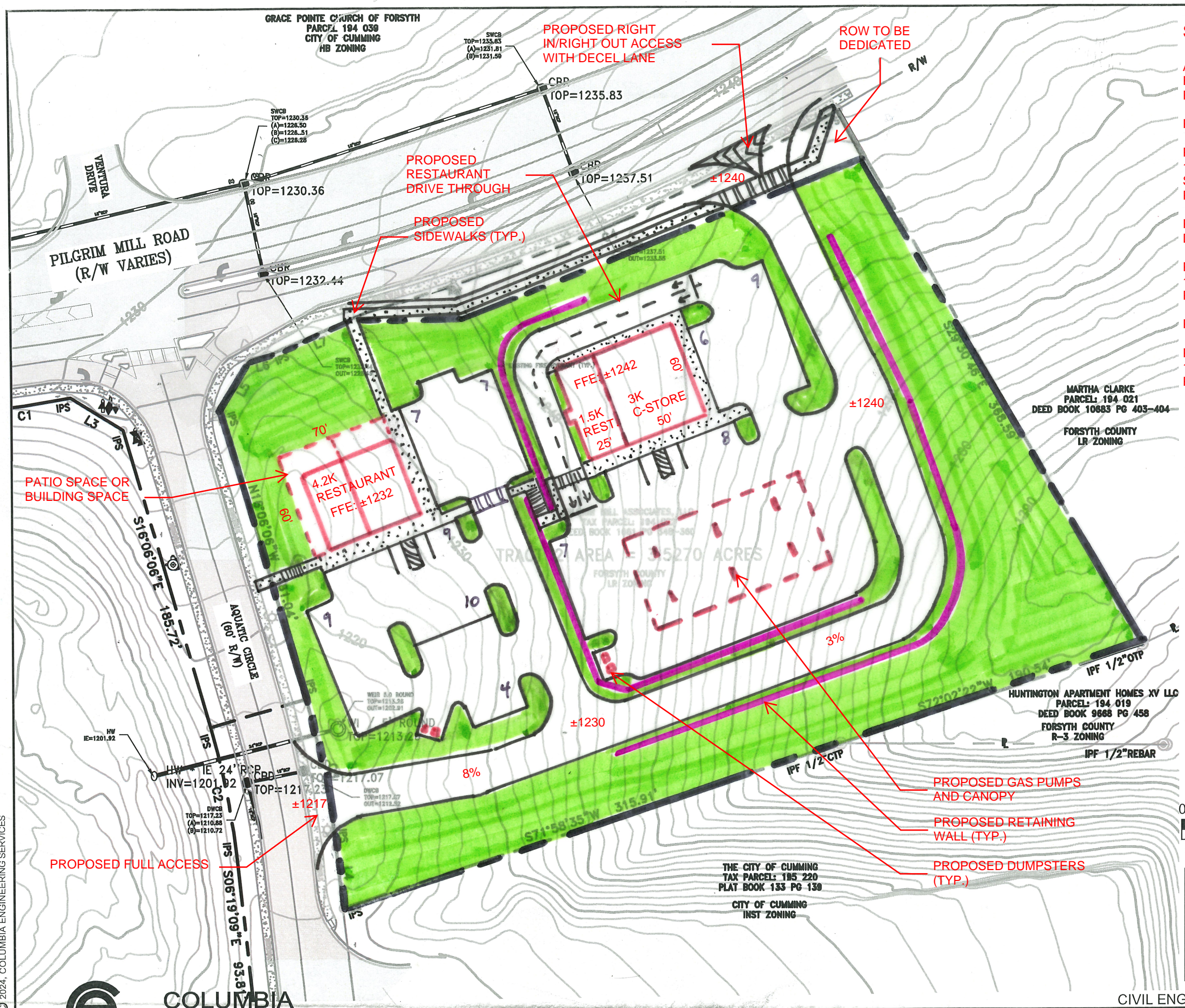
PARKING REQUIRED: 15 SPACES
1 SPACE/250 SF + 1 SPACE/EMPLOYEE
PARKING PROVIDED: 15 SPACES

PROPOSED RESTAURANT WITH DRIVE THROUGH: ±1,500 SF

PARKING REQUIRED: 15 SPACES
1 SPACE / 100 SF
PARKING PROVIDED: 15 SPACES

PROPOSED RESTAURANT: 4,200 SF

PARKING REQUIRED: 42 SPACES
1 SPACE/100 SF
PARKING PROVIDED: 46 SPACES



SCALE: 1" = 60'

DISCLAIMER: EXISTING DATA TAKEN FROM AVAILABLE GIS SOURCES. ALL SKETCHES BASED ON THIS ARE CONSIDERED PRELIMINARY, AND THE DESIGNER ASSUMES NO LIABILITY FOR ACCURACY OF THIS DATA OR ASSUMPTIONS BASED ON THIS DATA.

CIVIL ENGINEERS * LAND PLANNERS
* LANDSCAPE ARCHITECTS * SURVEYORS

© 2024, COLUMBIA ENGINEERING SERVICES