

OFFICE SPACE AVAILABLE NOW FOR LEASE



CUSHMAN &
WAKEFIELD

COMMERCIAL
OKLAHOMA



Move-in ready office with reception, private offices, and excellent visibility along N Classen Blvd in one of Oklahoma City's most active business districts.

4019 N CLASSEN BLVD
OKLAHOMA CITY, OK 73118

4019 N CLASSEN BLVD

OKLAHOMA CITY, OK 73118

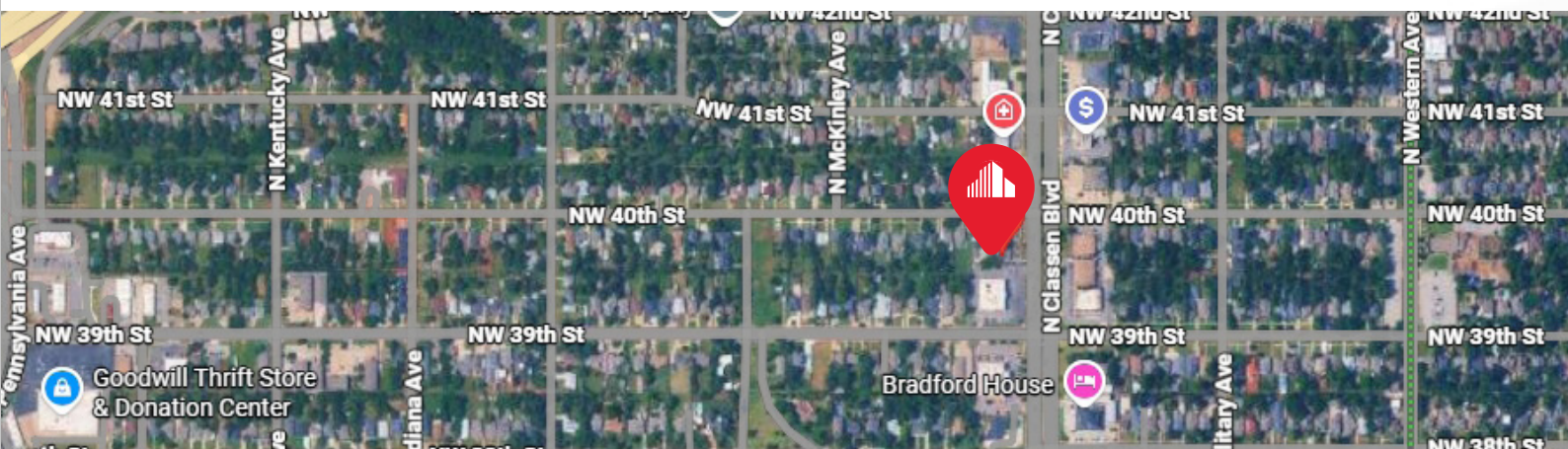
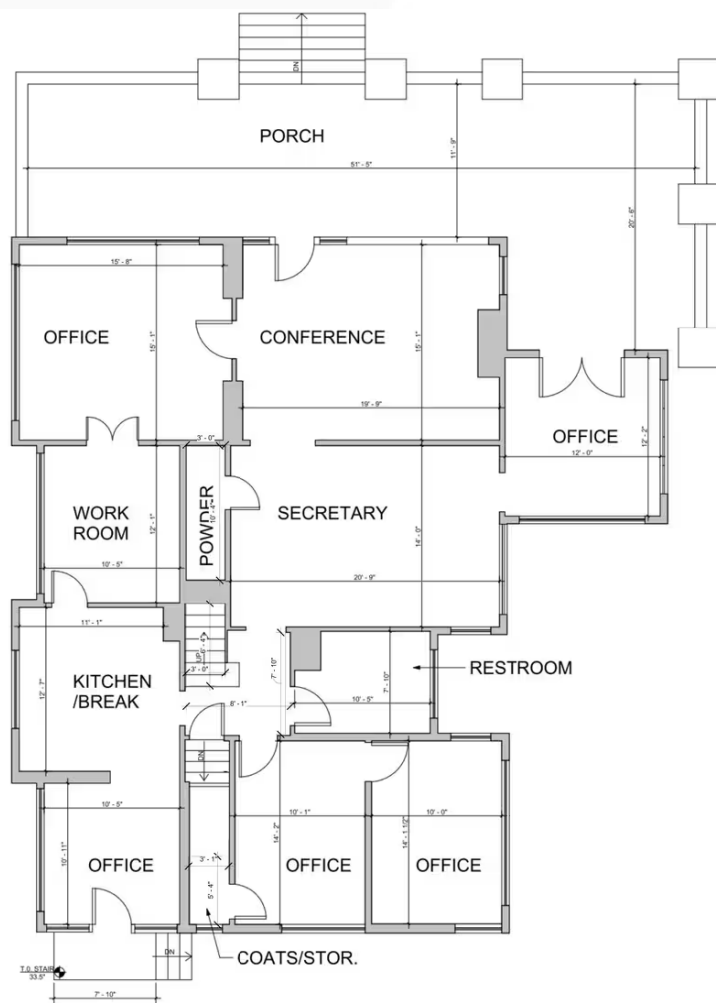
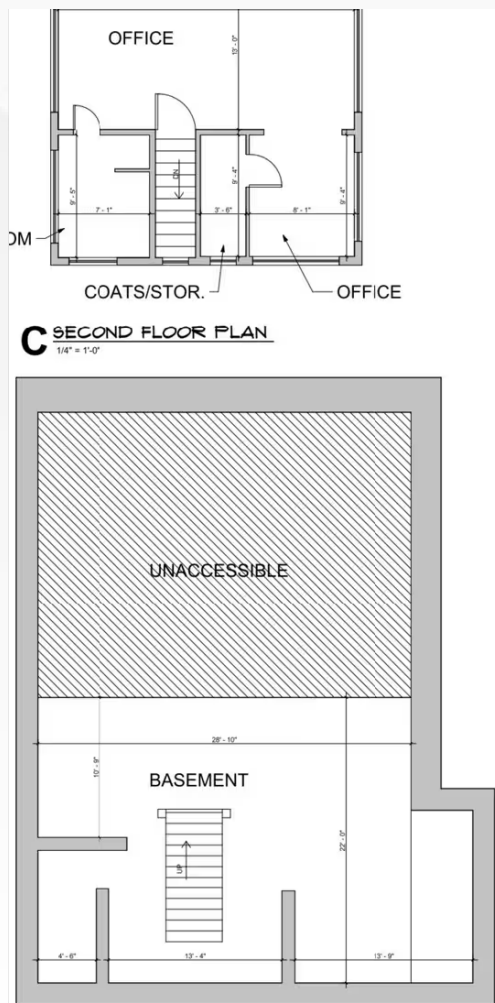
BUILDING SIZE: ± 2,882 SF

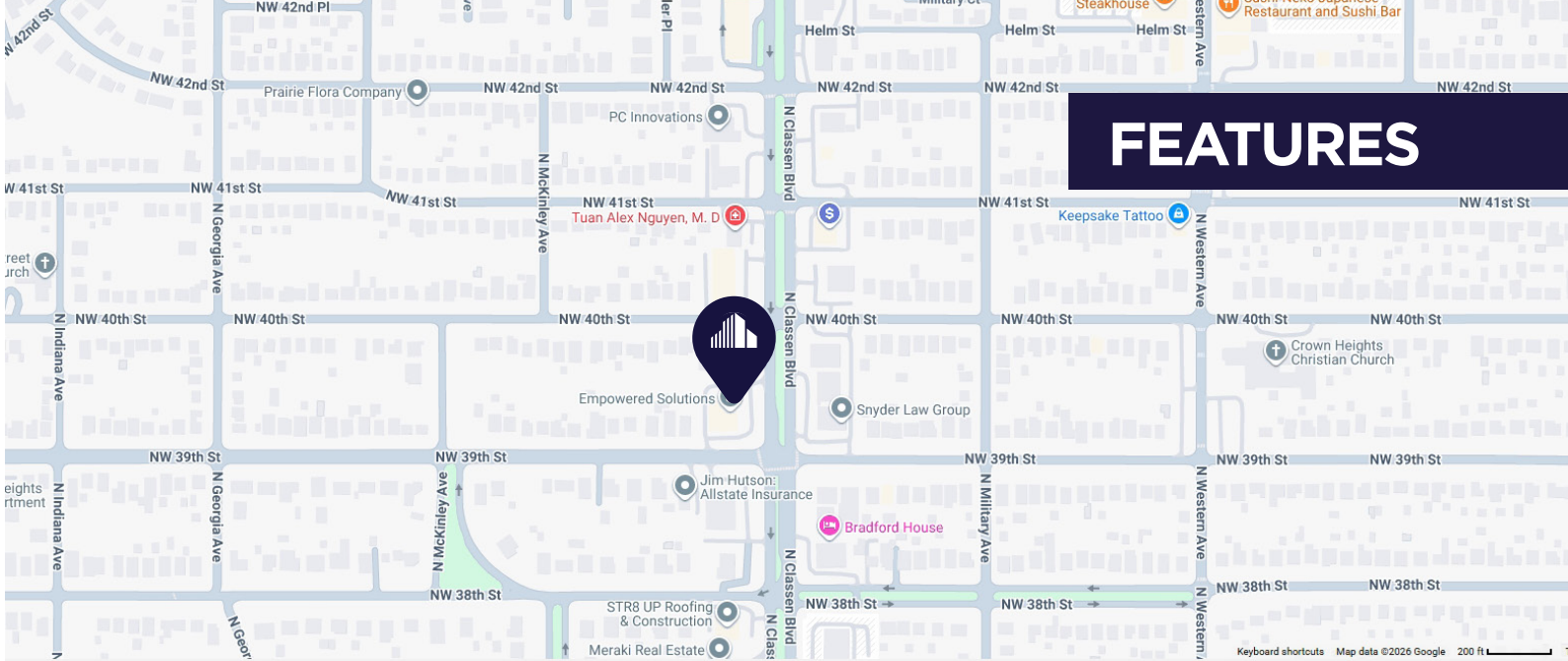
USE: Office • 6 Offices

PARKING: Secured Parking • 5 Covered, 3 Surface

AVAILABLE SPACE: ± 2,882 SF

LEASE RATE: \$12.50 NNN

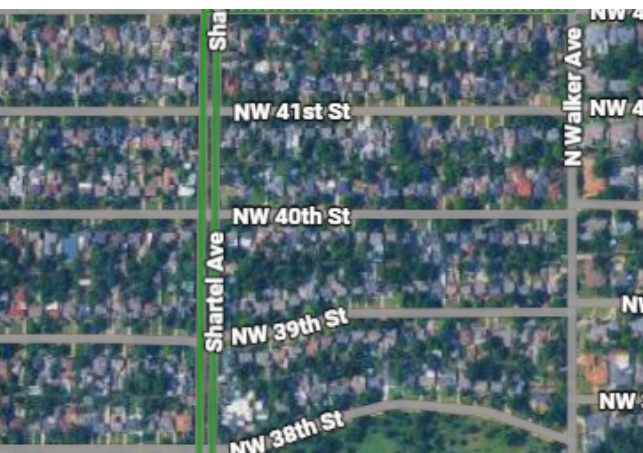




FEATURES

BUILDING AMENITIES

- FENCED LOT
- FIREPLACE
- HARDWOOD FLOORS
- KITCHEN
- NATURAL LIGHT
- OUTDOOR SEATING
- PARTITIONED OFFICES
- PLUG & PLAY
- RECEPTION
- RECESSED LIGHTING
- SECURITY SYSTEM
- SHOWER FACILITIES



4019 N CLASSEN BLVD OKLAHOMA CITY, OK 73118

BUILDING PHOTOS



CONTACT
US

VIVIENNE VOGLER

+1 405 570 8595

vvogler@commercialoklahoma.com

MICAH SHERMAN, CCIM

+1 405 488 5548

msherman@commercialoklahoma.com

TRAVIS MASON

+1 405 249 0655

tmason@commercialoklahoma.com

OKLAHOMA
CITY

204 N Robinson Ave, Suite 2000, Oklahoma City, OK 73102
+1 405 563 5000 commercialoklahoma.com

©2026 Cushman & Wakefield | Commercial Oklahoma. Independently Owned and Operated / A Member of the Cushman & Wakefield Alliance All rights reserved. The information contained in this communication is strictly confidential. This information has been obtained from sources believed to be reliable but has not been verified. No warranty or representation, express or implied, is made as to the condition of the property (or properties) referenced herein or as to the accuracy or completeness of the information contained herein, and same is submitted subject to errors, omissions, change of price, rental or other conditions, withdrawal without notice, and to any special listing conditions imposed by the property owner(s). Any projections, opinions or estimates are subject to uncertainty and do not signify current or future property performance.