



611 Dutchess Tpke

611 Dutchess Tpke, Poughkeepsie, NY 12603

Shkelzen Malaj
Newark Deal LLC
221 Frelinghuysen Ave, Newark, NJ 07114
kitchenfactory@live.com
(914) 574-9430



611 Dutchess Tpke

\$18.00 /SF/YR

Excellent opportunity to lease a highly visible commercial property in a busy Poughkeepsie location. This freestanding building offers approximately 9,000+ sq ft of versatile space ideal for retail, showroom, office, medical, fitness, or service-based businesses.

Located on heavily traveled Dutchess Turnpike with strong daily traffic and great exposure, the property features ample parking, easy access, and flexible layout options to accommodate a variety of business needs.

Property Highlights:

- Approx. 9,000+ sq ft available
- High-traffic location with excellent visibility
- Ample on-site parking
- Flexible floor plan
- Suitable for retail, office, showroom, medical, and more
- Convenient access to major roads and surrounding neighborhoods

Position...



Rental Rate: \$18.00 /SF/YR

Property Type: Retail

Property Subtype: Freestanding

Gross Leasable Area: 9,599 SF

Year Built: 1946

Walk Score ®: 50 (Fairly friendly)

Transit Score ®: 40 (Fairly friendly)

Rental Rate Mo: \$1.50 /SF/MO

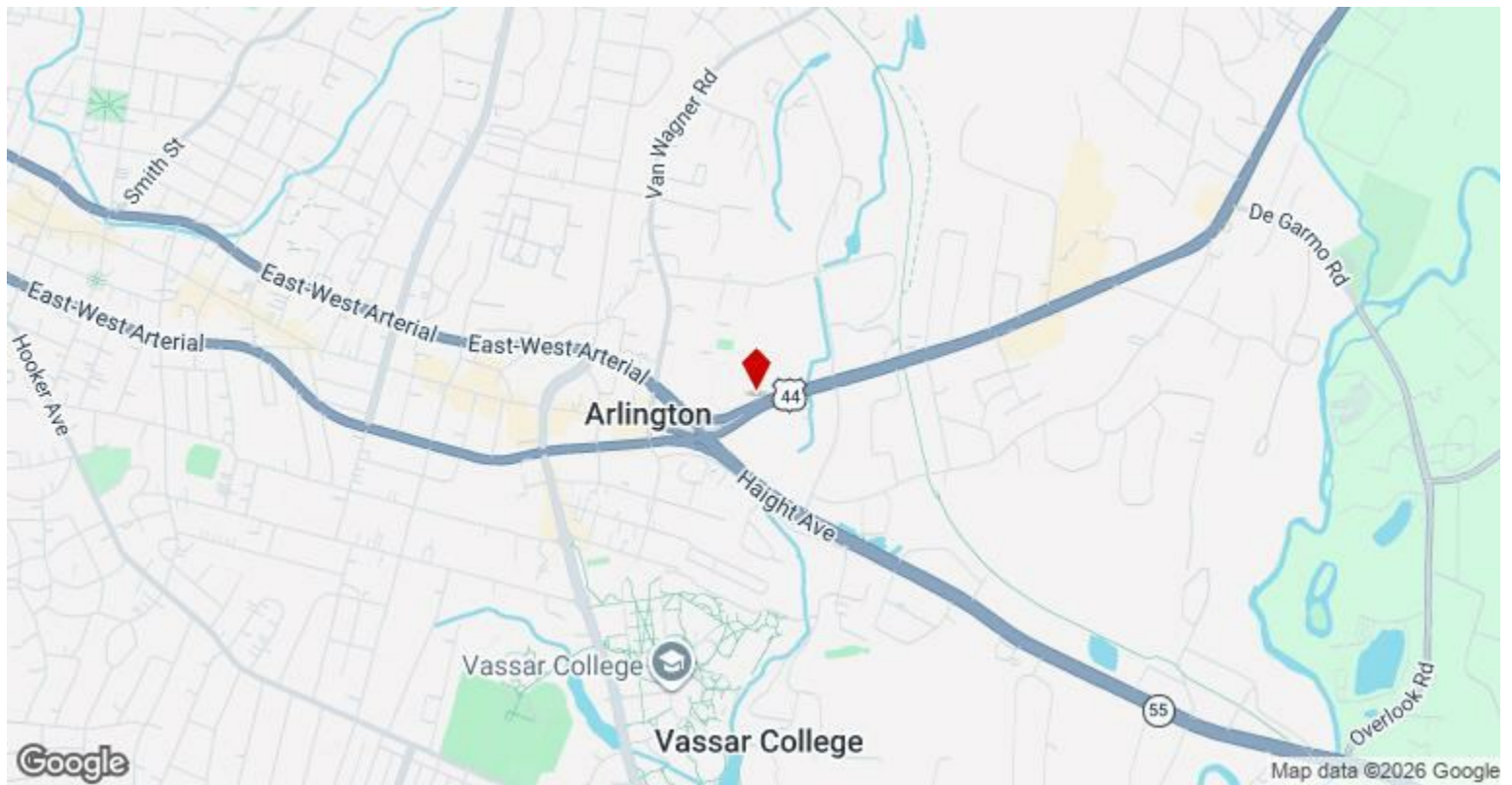
1st Floor

Space Available	9,500 SF
Rental Rate	\$18.00 /SF/YR
Date Available	Now
Service Type	[object Object]
Built Out As	Standard Retail
Space Type	Relet
Space Use	Retail
Lease Term	Negotiable

Excellent opportunity to lease a highly visible commercial property in a busy Poughkeepsie location. This freestanding building offers approximately 9,000+ sq ft of versatile space ideal for retail, showroom, office, medical, fitness, or service-based businesses. Located on heavily traveled Dutchess Turnpike with strong daily traffic and great exposure, the property features ample parking, easy access, and flexible layout options to accommodate a variety of business needs. Property Highlights:

- Approx. 9,000+ sq ft available
- High-traffic location with excellent visibility
- Ample on-site parking
- Flexible floor plan
- Suitable for retail, office, showroom, medical, and more
- Convenient access to major roads and surrounding neighborhoods

Position your business in one of Poughkeepsie's most established commercial corridors.



611 Dutchess Tpke, Poughkeepsie, NY 12603

Excellent opportunity to lease a highly visible commercial property in a busy Poughkeepsie location. This freestanding building offers approximately 9,000+ sq ft of versatile space ideal for retail, showroom, office, medical, fitness, or service-based businesses.

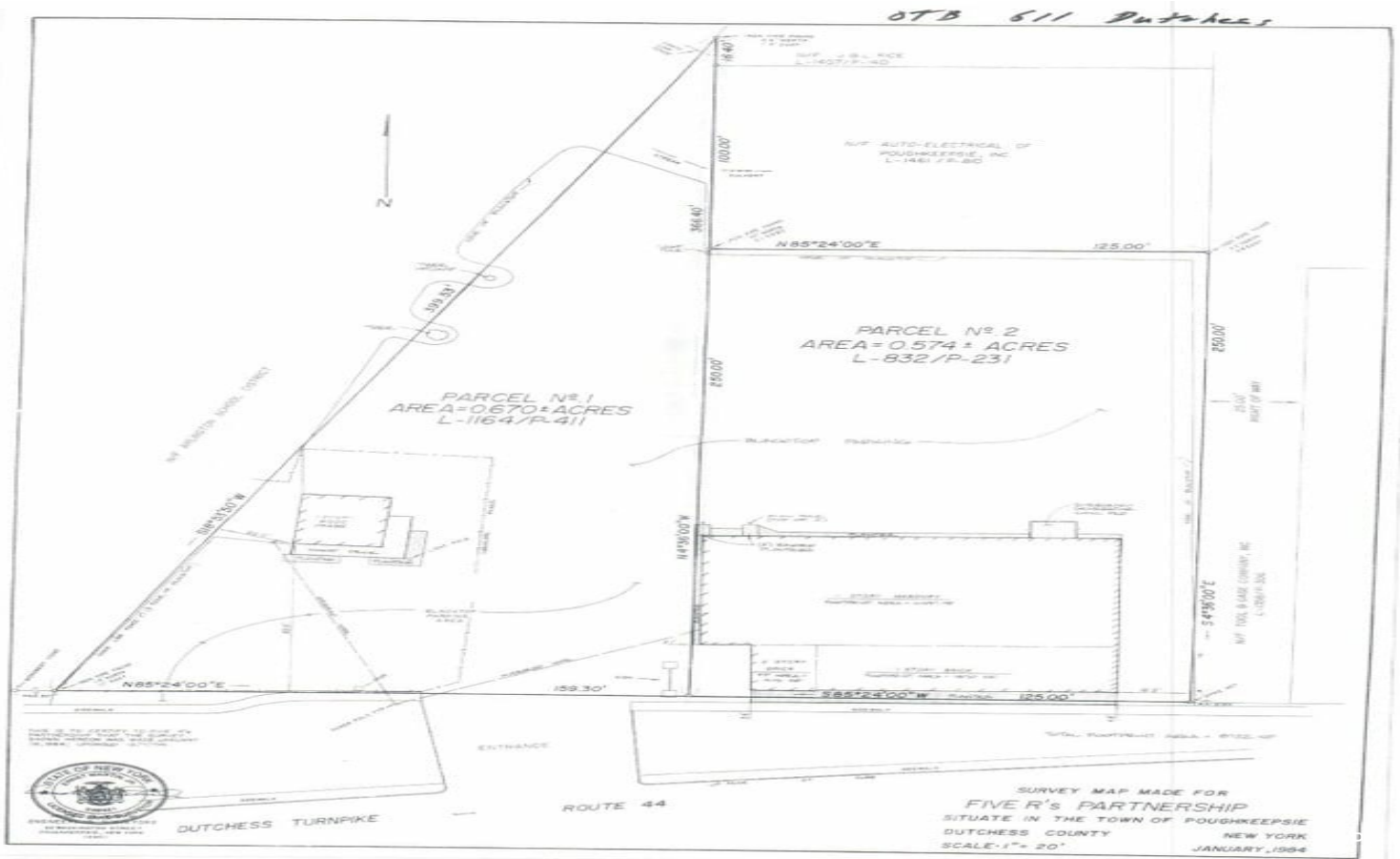
Located on heavily traveled Dutchess Turnpike with strong daily traffic and great exposure, the property features ample parking, easy access, and flexible layout options to accommodate a variety of business needs.

Property Highlights:

- Approx. 9,000+ sq ft available
- High-traffic location with excellent visibility
- Ample on-site parking
- Flexible floor plan
- Suitable for retail, office, showroom, medical, and more
- Convenient access to major roads and surrounding neighborhoods

Position your business in one of Poughkeepsie's most established commercial corridors.

Property Photos



Property Photos



Building Photo

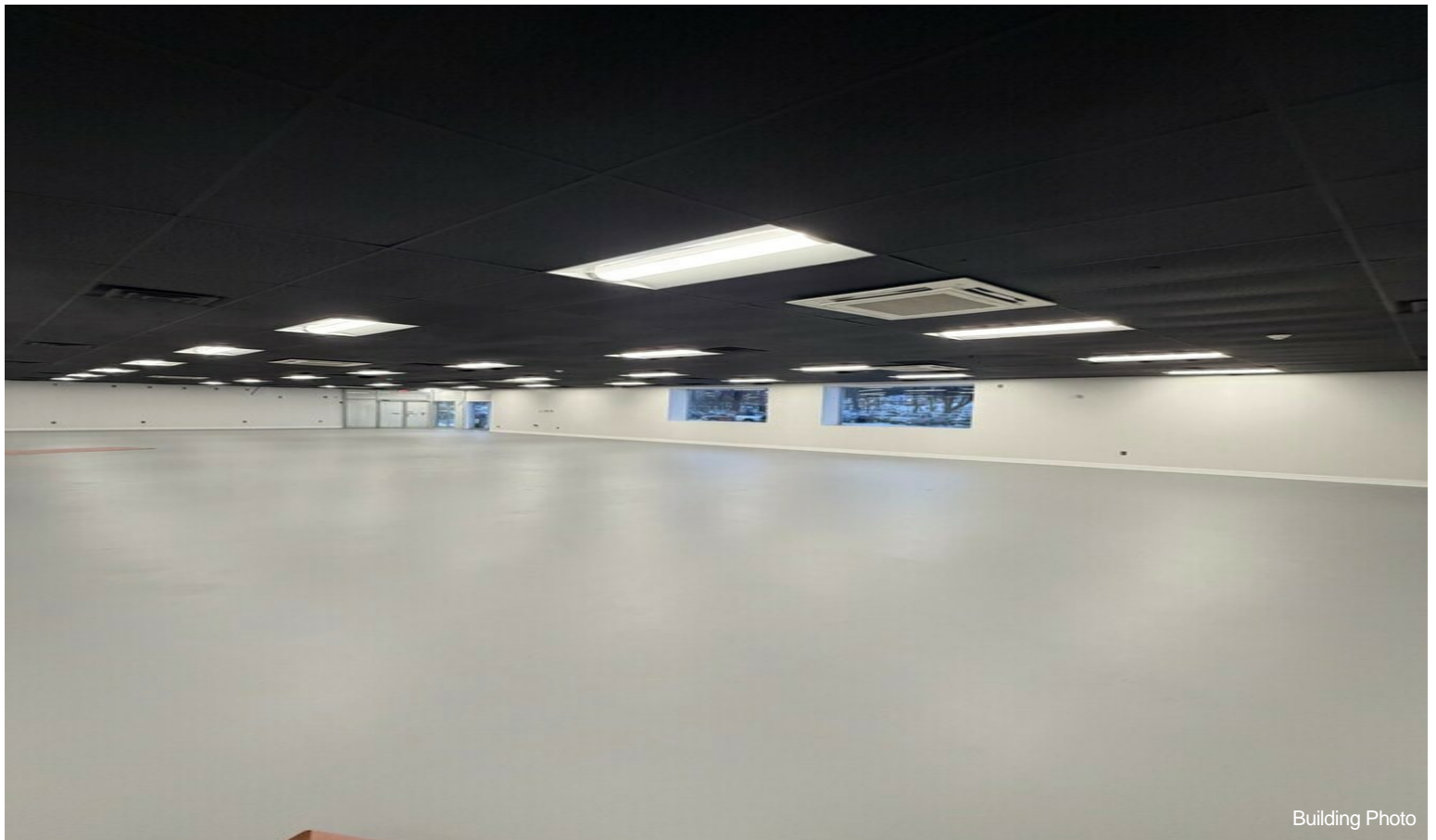


Building Photo

Property Photos



Building Photo



Building Photo

Property Photos



Property Photos

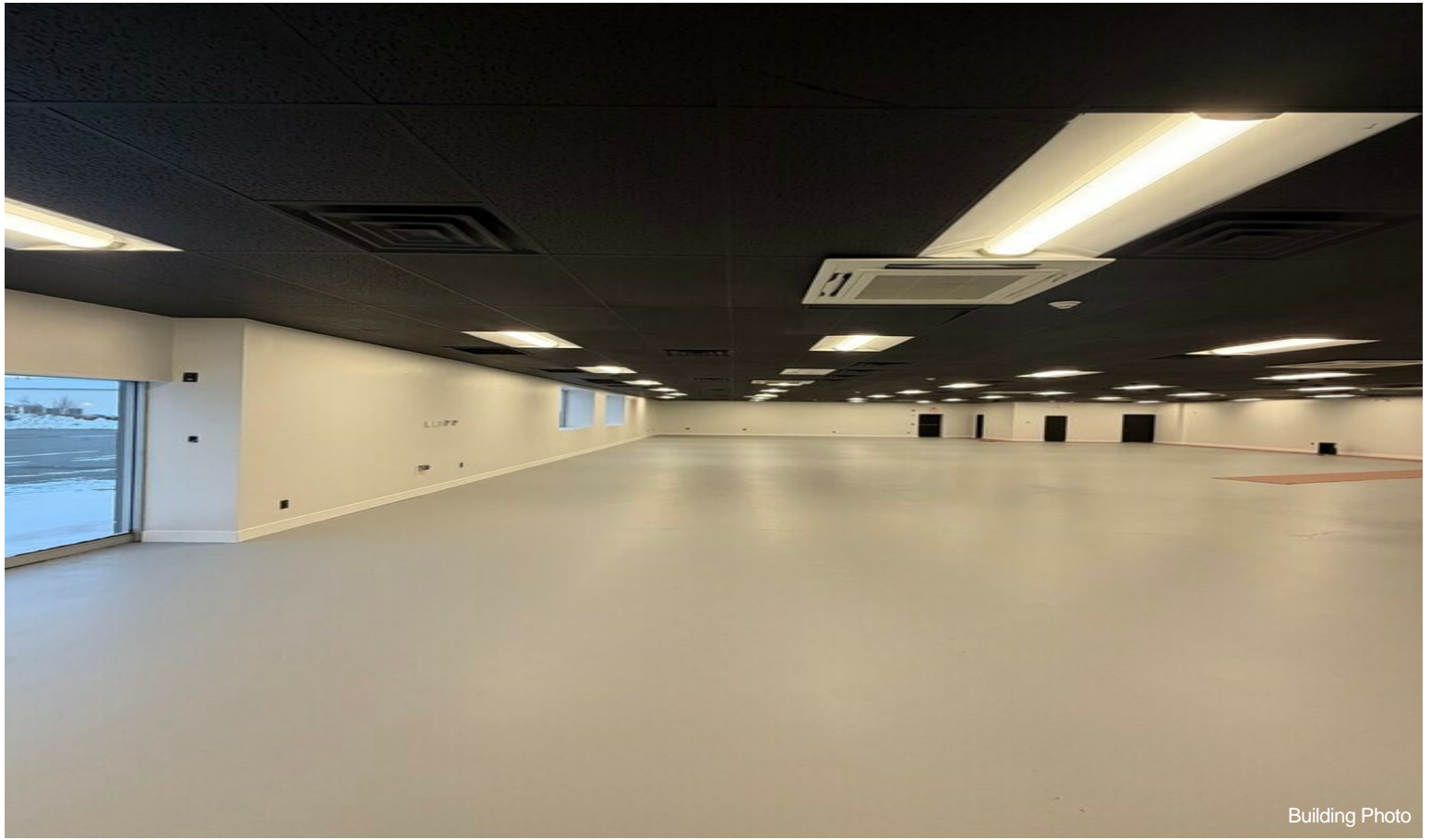


Building Photo



Building Photo

Property Photos



Building Photo



Building Photo