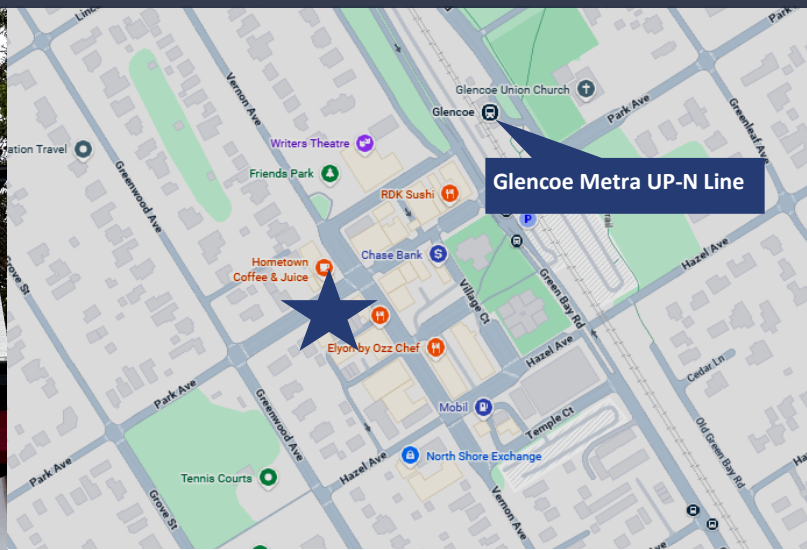


HEART OF DOWNTOWN GLENCOE FORMER STARBUCKS LOCATION

378 Park Ave
Glencoe, IL 60022



	1 Mile	3 Miles	5 Miles
Population	7,583	39,884	135,271
Households	2,535	14,118	49,788
Avg HH Income	\$200,407	\$195,811	\$178,623

Great third floor creative office spaces for lease in an updated historic building in downtown Glencoe. UNIT 3A is a bright space with 3 rooms plus a bathroom and closet. UNIT 3B is a gorgeous bright space with 5 rooms, bathroom, skylights and windows. Located across from Hometown Coffee & Juice. Steps from the Metra station, local shops, and dining. High foot traffic from both commuters and neighborhood residents, making this an ideal setting for retailers seeking a North Shore presence. With front curbside parking, nearby public parking, plus a walkable, upscale village environment, tenants benefit from both visibility and accessibility.

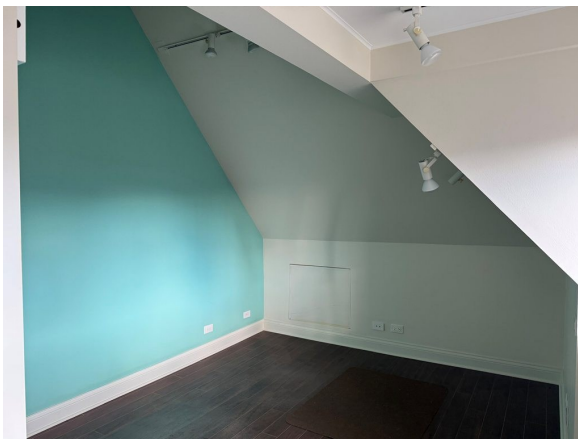
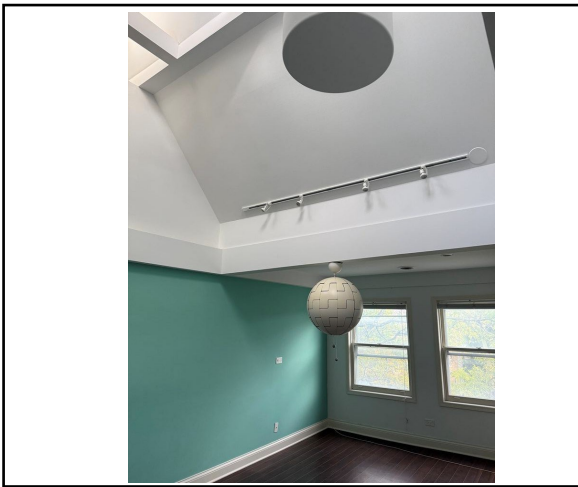
UNIT 3A: 841 SF for
\$2,500 Monthly
Plus Utilities

UNIT 3B: 1,423 SF for
\$2,850 Monthly
Plus Utilities

LEASE TYPE: GROSS

CONTACT Craig Wolf
773 736 3600 Office
847 989 9653 Mobile
craig@straussrealty.com

STRAUSS
REALTY, LTD.

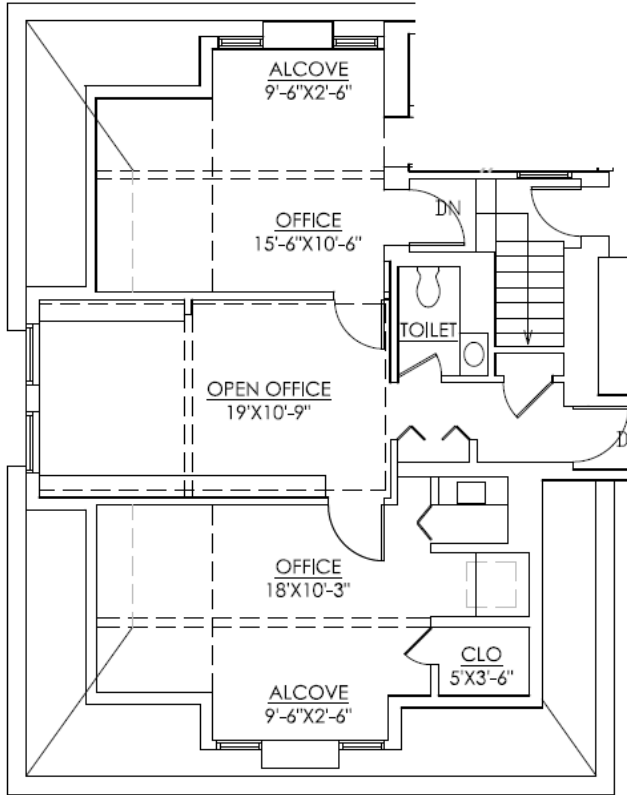


CONTACT

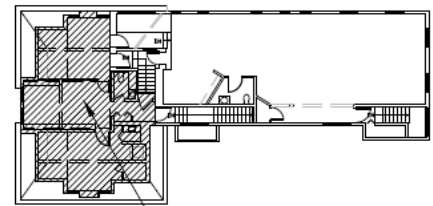
Craig Wolf
773 736 3600 Office
847 989 9653 Mobile
craig@straussrealty.com

UNIT 3A Floor Plan

378 Park Ave
Glencoe, IL 60022



SUITE 3A
841 RSF



SUITE LOCATION

KEY PLAN



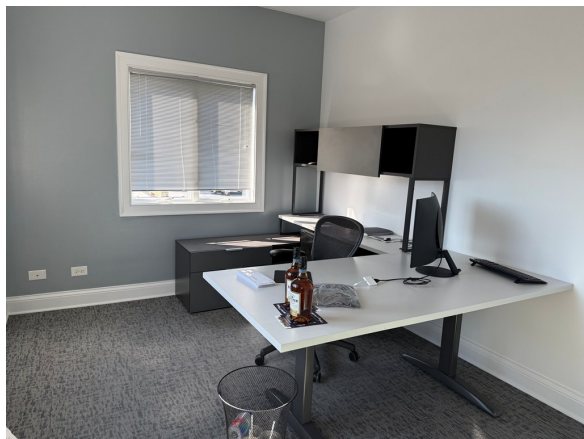
CONTACT

Craig Wolf
773 736 3600 Office
847 989 9653 Mobile
craig@straussrealty.com

STRAUSS
REALTY, LTD.

UNIT 3B Photos

378 Park Ave
Glencoe, IL 60022



CONTACT

Craig Wolf
773 736 3600 Office
847 989 9653 Mobile
craig@straussrealty.com

STRAUSS
REALTY, LTD.